

# Converting Colors

Decimal(16753319)

Have a look what the booklet for  
Decimal(16753319) contains.

<b>Decimal(16753319)</b> .....	3
<i><b>Conversions</b></i> .....	4
<i><b>Details</b></i> .....	6
<i><b>Harmonies</b></i> .....	11
<i><b>Previews</b></i> .....	23
<i><b>Color Blindness Simulation</b></i> .....	26
<i><b>CSS Examples</b></i> .....	29

# **Color**

**Decimal(16753319)**

# Conversions

## Conversions Part 1

Format	Color
Hex	FFA2A7
RGB	255, 162, 167
RGB Percent	100%, 64%, 65%
CMY	0.0000, 0.3647, 0.3451
CMYK	0.00, 0.36, 0.35, 0.00
HSL	357°, 100%, 82%
HSV	357°, 36%, 100%
XYZ	61.1354, 49.8907, 42.9669
YIQ	190.3770, 53.8230, 21.2710

# Conversions

## Conversions Part 2

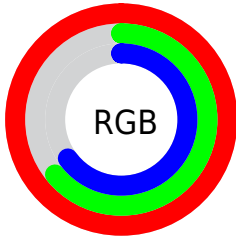
<b>Format</b>	<b>Color</b>
<b>R<sub>YB</sub></b>	255, 162, 167
Decimal	16753319
CIE <sub>Lab</sub>	76.00, 35.05, 11.93
CIE <sub>LCh</sub>	76, 37.020, 18.795
Yxy	49.8907, 0.3970, 0.3240
Android (android.graphics.Color)	4294943399 (0xFFFFA2A7)
YUV	190.3770, -11.5249, 56.6744
Hunter-Lab	70.6333, 30.8890, 13.3767

# Details

The Decimal color **16753319** is a light color, and the websafe version is hex **FF9999**. A complement of this color would be **10682362**, and the grayscale version is **12500670**.

A 20% lighter version of the original color is **16767710**, and **12873075** is the 20% darker color. If you saturate the color by 10%, you get **16746639**, and if you desaturate by 10%, it is **16759743**.

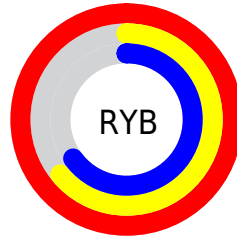
# Distribution



Red (100%)

Green (64%)

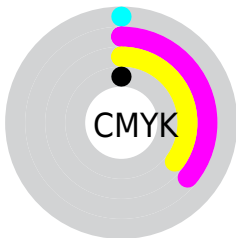
Blue (65%)



Red (100%)

Yellow (64%)

Blue (65%)

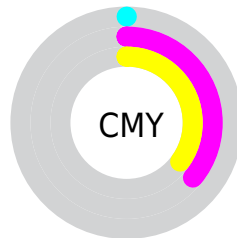


Cyan (0%)

Magenta (36%)

Yellow (35%)

Black (0%)



Cyan (0%)

Magenta (36%)

Yellow (35%)

# Brightness & Saturation Gradients

These gradients show how the Decimal color 16753319 changes by changing the brightness by 10 percent. The first figure shows a shift by +10% for each color and the second figure -10%.

Similar to the brightness gradients but the following saturation gradients show a change of the Decimal color 16753319 by changing the saturation by 10% instead.



 16753319

 16753319

16777215

 14780301

 16767710

 12873075

 16775163

 10966107

 9124675

 7348781

 5572121

 3866624

 2097153

 0

 16753319

 16753319

 16746639

 16759743

 16740215

 16766423

 16733791

 16773103

 16727110

16777215

 16720430

 16714006

 16711694

# Harmonies

## Analogous

The Analogous color harmony consists of three colors that are next to each other on the color wheel.



16163786



16753319



16165257

# Triad

The Triadic color harmony groups three colors that are evenly spaced from another and form a triangle on the color wheel.



16753319



9881741



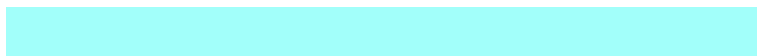
7848958

# Complementary

The Complementary color scheme is a pair of colors which are on the opposite of each other on the color wheel.



16753319



10682362

# Split Complementary

Split-complementary colors differ from the complementary color scheme. The scheme consists of three colors, the original color and two neighbors of the complement color.



4705006



16753319



7130541

# Square

The Square scheme is like the rectangle color scheme, but the four colors are evenly spaced on the color wheel.



16753319



12435578



4640464



11384828

# Rectangle

The Rectangle color scheme consists of four colors that form a rectangle on the color wheel.



16753319



15184252



4640464



6670074

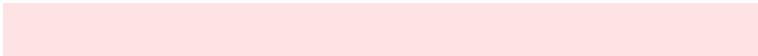


# Sweetspot

The Sweet Spot groups the original color and five complimentary colors.



16753319



16770020



16360191



8417136



0



8421504



# Same Dimension

The Same Dimension uses a secret algorithm to generate beautiful new colors.



16753319



16748437



16763554



8418163



12517386



4194307



# Inverse Universe

The Inverse Universe completely reimagines the original color for something new.



16753319



16748437



10672127



8418163



12517386



4194307



# Previews

## White Background



This preview shows how the Decimal color 16753319 looks on a white background.

## Color Contrast Check

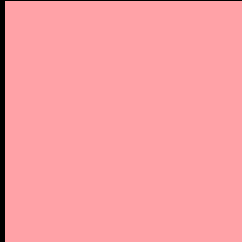
Large Text (above 18pt) WCAG AA × Fail

Any Text WCAG AA × Fail

Large Text (above 18pt) WCAG AAA × Fail

Any Text WCAG AAA × Fail

# Black Background



This preview shows how the Decimal color 16753319 looks on a black background.

## Color Contrast Check

Large Text (above 18pt) WCAG AA ✓ Pass

Any Text WCAG AA ✓ Pass

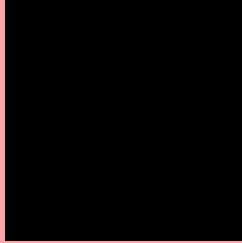
Large Text (above 18pt) WCAG AAA ✓ Pass

Any Text WCAG AAA ✓ Pass

If you want to check with other color combinations, try the [Color Contrast Checker](#).



## Decimal 16753319 Background



This preview shows how black text looks on a background with the Decimal color 16753319.

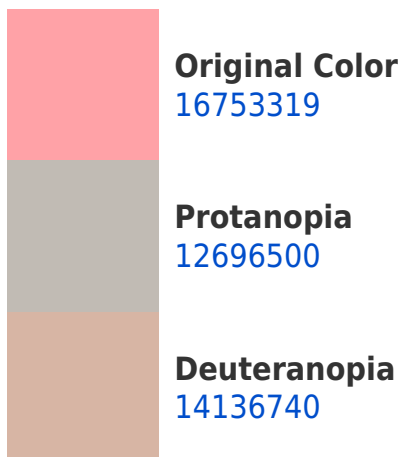


This preview shows how white text looks on a background with the Decimal color 16753319.

# Color Blindness Simulation

Color vision deficiency is a very complex topic, and I could not describe the different causes any better than Wikipedia does, so if you want to learn more, you should check out their [article about color blindness](#).

## Dichromacy





**Tritanopia**  
16753069

# Trichromacy



**Original Color**  
16753319



**Protanomaly**  
14201519



**Deuteranomaly**  
15117989



**Tritanomaly**  
16753067

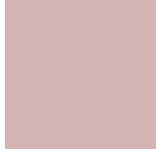
# Monochromacy



**Original Color**  
16753319



**Achromatopsia**  
12500670



**Achromatomaly**  
14070966

# CSS Examples

## Text

The CSS property to change the color of the text to Decimal 16753319 is called "color". The color property can be set on classes, ids or directly on the HTML element.

This example shows how text in the color #FFA2A7 looks like.

```
.text, #text, p{  
    color:#FFA2A7  
}
```

If you want to add a text shadow in that color use the text-shadow property, you can generate a text shadow directly with our [CSS Text Shadow Generator](#).

Here you see how black text with a 4 pixel #FFA2A7 colored shadow looks like.

```
.shadow{ text-shadow: 4px 4px 2px #FFA2A7
}
```

## Border

The CSS property to change the border of an element to Decimal 16753319 is called "border". The border property can be set on classes, ids or directly on the HTML element.

This example shows the color as border, it can be applied via the CSS property "border" or "border-color".

```
.border, #border, table{ border:4px solid
#FFA2A7 }
```

If only the border color should be changed use the property `border-color`.

```
.border{ border-color:#FFA2A7 }
```

If you want to add a box shadow in that color use:

Here you see how a box with a 4 pixel #FFA2A7 colored shadow looks like.

```
.boxshadow{ -moz-box-shadow:4px 4px 4px  
4px #FFA2A7; -webkit-box-shadow:4px 4px  
4px 4px #FFA2A7; box-shadow:4px 4px 4px  
4px #FFA2A7 }
```

# Background

The CSS property to change the background color of an element to Decimal 16753319 is called "background". The background property can be set on classes, ids or directly on the HTML element.

```
.background, #background, body{  
background:#FFA2A7 }
```

If only the background color should be changed can be used:

```
.background{ background-color:#FFA2A7 }
```

This example shows the color as background, it is applied via the CSS property "background".

To optimize and compress your CSS code, you can use our [online CSS compressor and optimizer](#) based on csstidy. If you want to create a linear or radial gradient as background or border, check our [CSS Gradient Generator](#).



Hey! You found this booklet interesting? Support Converting Colors with the new Membership Option!

The pro membership hides all ads, plus gives you double the colors in the color bucket, and more awesome pro features!

**[Learn more, Memberships starting at \\$2.50/m!](#)**

**Follow me  
on Twitter!**

@ConvertingColor