

Converting Colors

Decimal(16755620)

Have a look what the booklet for
Decimal(16755620) contains.

Decimal(16755620)	3
<i>Conversions</i>	4
<i>Details</i>	6
<i>Harmonies</i>	11
<i>Previews</i>	23
<i>Color Blindness Simulation</i>	26
<i>CSS Examples</i>	29

Color

Decimal(16755620)

Conversions

Conversions Part 1

Format	Color
Hex	FFABA4
RGB	255, 171, 164
RGB Percent	100%, 67%, 64%
CMY	0.0000, 0.3294, 0.3569
CMYK	0.00, 0.33, 0.36, 0.00
HSL	5°, 100%, 82%
HSV	5°, 36%, 100%
XYZ	62.5038, 53.0662, 42.0704
YIQ	195.3180, 52.3110, 15.6310

Conversions

Conversions Part 2

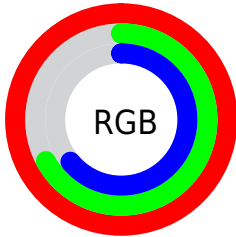
Format	Color
R _Y B	255, 172, 164
Decimal	16755620
CIE Lab	77.91, 30.00, 16.25
CIE LCh	78, 34.120, 28.444
Yxy	53.0662, 0.3965, 0.3366
Android (android.graphics.Color)	4294945700 (0xFFFFABA4)
YUV	195.3180, -15.4398, 52.3411
Hunter-Lab	72.8465, 25.6751, 16.7513

Details

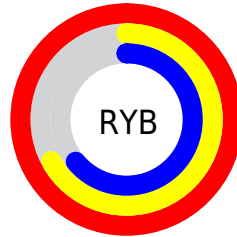
The Decimal color **16755620** is a light color, and the websafe version is hex **FF9999**. A complement of this color would be **10811647**, and the grayscale version is **12829635**.

A 20% lighter version of the original color is **16770011**, and **12875376** is the 20% darker color. If you saturate the color by 10%, you get **16749451**, and if you desaturate by 10%, it is **16761790**.

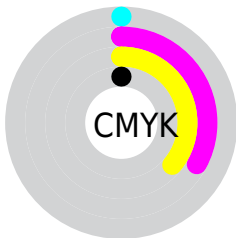
Distribution



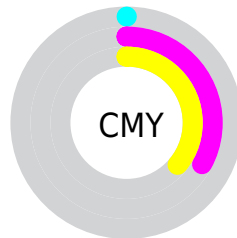
- Red (100%)
- Green (67%)
- Blue (64%)



- Red (100%)
- Yellow (67%)
- Blue (64%)



- Cyan (0%)
- Magenta (33%)
- Yellow (36%)
- Black (0%)



- Cyan (0%)
- Magenta (33%)
- Yellow (36%)

Brightness & Saturation Gradients

These gradients show how the Decimal color 16755620 changes by changing the brightness by 10 percent. The first figure shows a shift by +10% for each color and the second figure -10%.

Similar to the brightness gradients but the following saturation gradients show a change of the Decimal color 16755620 by changing the saturation by 10% instead.

 16755620

 16755620

16777215

 14782602

 16770011

 12875376

 16777207

 11033944

 9126977

 7351338

 5575702

 3932160

 2293761

 0

 16755620

 16755620

 16749451

 16761790

 16743537

 16767703

 16737368

 16773873

 16731454

16777215

 16725284

 16719371

 16716800

Harmonies

Analogous

The Analogous color harmony consists of three colors that are next to each other on the color wheel.



16558531



16755620



15905676

Triad

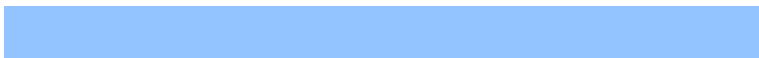
The Triadic color harmony groups three colors that are evenly spaced from another and form a triangle on the color wheel.



16755620



9621407



9749759

Complementary

The Complementary color scheme is a pair of colors which are on the opposite of each other on the color wheel.



16755620



10811647

Split Complementary

Split-complementary colors differ from the complementary color scheme. The scheme consists of three colors, the original color and two neighbors of the complement color.



6868470



16755620



7262910

Square

The Square scheme is like the rectangle color scheme, but the four colors are evenly spaced on the color wheel.



16755620



12044424



5820894



12827128

Rectangle

The Rectangle color scheme consists of four colors that form a rectangle on the color wheel.



16755620



14858883



5820894



8701950

Sweetspot

The Sweet Spot groups the original color and five complimentary colors.



16755620



16770531



16753913



8417391



0



8421504

Same Dimension

The Same Dimension uses a secret algorithm to generate beautiful new colors.



16755620



16751249



16767140



8418419



12521216



4195584

Inverse Universe

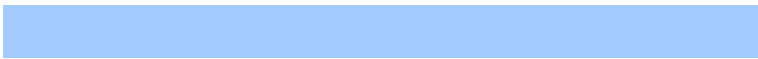
The Inverse Universe completely reimagines the original color for something new.



10811647



9566207



10800127



7569280



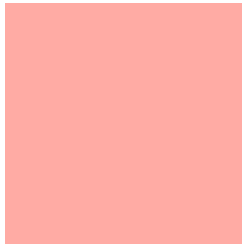
45503



15168

Previews

White Background



This preview shows how the Decimal color 16755620 looks on a white background.

Color Contrast Check

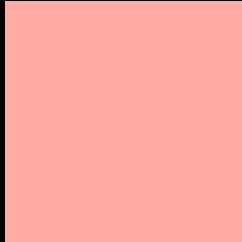
Large Text (above 18pt) WCAG AA × Fail

Any Text WCAG AA × Fail

Large Text (above 18pt) WCAG AAA × Fail

Any Text WCAG AAA × Fail

Black Background



This preview shows how the Decimal color 16755620 looks on a black background.

Color Contrast Check

Large Text (above 18pt) WCAG AA ✓ Pass

Any Text WCAG AA ✓ Pass

Large Text (above 18pt) WCAG AAA ✓ Pass

Any Text WCAG AAA ✓ Pass

If you want to check with other color combinations, try the [Color Contrast Checker](#).

Decimal 16755620 Background



This preview shows how black text looks on a background with the Decimal color 16755620.



This preview shows how white text looks on a background with the Decimal color 16755620.

Color Blindness Simulation

Color vision deficiency is a very complex topic, and I could not describe the different causes any better than Wikipedia does, so if you want to learn more, you should check out their [article about color blindness](#).

Dichromacy





Tritanopia
16755125

Trichromacy



Original Color
16755620



Protanomaly
14530731



Deuteranomaly
15447458

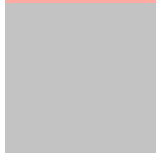


Tritanomaly
16755375

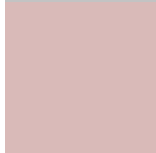
Monochromacy



Original Color
16755620



Achromatopsia
12829635



Achromatomaly
14269112

CSS Examples

Text

The CSS property to change the color of the text to Decimal 16755620 is called "color". The color property can be set on classes, ids or directly on the HTML element.

This example shows how text in the color #FFABA4 looks like.

```
.text, #text, p{  
    color:#FFABA4  
}
```

If you want to add a text shadow in that color use the text-shadow property, you can generate a text shadow directly with our [CSS Text Shadow Generator](#).

Here you see how black text with a 4 pixel #FFABA4 colored shadow looks like.

```
.shadow{ text-shadow: 4px 4px 2px #FFABA4
}
```

Border

The CSS property to change the border of an element to Decimal 16755620 is called "border". The border property can be set on classes, ids or directly on the HTML element.

This example shows the color as border, it can be applied via the CSS property "border" or "border-color".

```
.border, #border, table{ border:4px solid
#FFABA4 }
```

If only the border color should be changed use the property `border-color`.

```
.border{ border-color:#FFABA4 }
```

If you want to add a box shadow in that color use:

Here you see how a box with a 4 pixel #FFABA4 colored shadow looks like.

```
.boxshadow{ -moz-box-shadow:4px 4px 4px  
4px #FFABA4; -webkit-box-shadow:4px 4px  
4px 4px #FFABA4; box-shadow:4px 4px 4px  
4px #FFABA4 }
```

Background

The CSS property to change the background color of an element to Decimal 16755620 is called "background". The background property can be set on classes, ids or directly on the HTML element.

```
.background, #background, body{  
background:#FFABA4 }
```

If only the background color should be changed can be used:

```
.background{ background-color:#FFABA4 }
```

This example shows the color as background, it is applied via the CSS property "background".

To optimize and compress your CSS code, you can use our [online CSS compressor and optimizer](#) based on csstidy. If you want to create a linear or radial gradient as background or border, check our [CSS Gradient Generator](#).

Hey! You found this booklet interesting? Support Converting Colors with the new Membership Option!

The pro membership hides all ads, plus gives you double the colors in the color bucket, and more awesome pro features!

[Learn more, Memberships starting at \\$2.50/m!](#)

**Follow me
on Twitter!**

@ConvertingColor