

# Converting Colors

Decimal(16756652)

Have a look what the booklet for  
Decimal(16756652) contains.

<b>Decimal(16756652)</b> .....	3
<i><b>Conversions</b></i> .....	4
<i><b>Details</b></i> .....	6
<i><b>Harmonies</b></i> .....	11
<i><b>Previews</b></i> .....	23
<i><b>Color Blindness Simulation</b></i> .....	26
<i><b>CSS Examples</b></i> .....	29

# **Color**

**Decimal(16756652)**

# Conversions

## Conversions Part 1

Format	Color
Hex	FFAFAC
RGB	255, 175, 172
RGB Percent	100%, 69%, 67%
CMY	0.0000, 0.3137, 0.3255
CMYK	0.00, 0.31, 0.33, 0.00
HSL	2°, 100%, 84%
HSV	2°, 33%, 100%
XYZ	64.0164, 54.8985, 46.2522
YIQ	198.5780, 48.6430, 16.0270

# Conversions

## Conversions Part 2

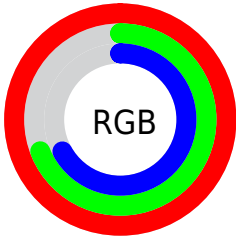
<b>Format</b>	<b>Color</b>
<b>R<sub>YB</sub></b>	255, 175, 172
Decimal	16756652
CIE <sub>Lab</sub>	78.98, 28.87, 13.42
CIE <sub>LCh</sub>	79, 31.840, 24.926
Yxy	54.8985, 0.3876, 0.3324
Android (android.graphics.Color)	4294946732 (0xFFFFAFAC)
YUV	198.5780, -13.1030, 49.4821
Hunter-Lab	74.0935, 24.5593, 14.8543

# Details

The Decimal color **16756652** is a light color, and the websafe version is hex **FF9999**. A complement of this color would be **11336959**, and the grayscale version is **13092807**.

A 20% lighter version of the original color is **16771043**, and **12876408** is the 20% darker color. If you saturate the color by 10%, you get **16750227**, and if you desaturate by 10%, it is **16763078**.

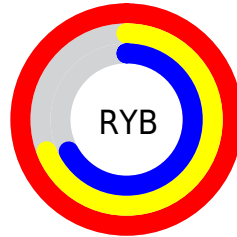
# Distribution



Red (100%)

Green (69%)

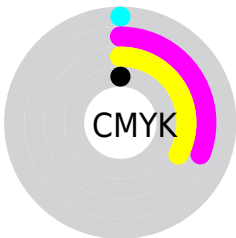
Blue (67%)



Red (100%)

Yellow (69%)

Blue (67%)

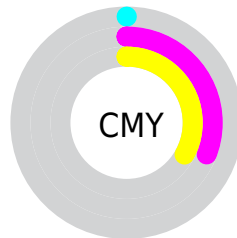


Cyan (0%)

Magenta (31%)

Yellow (33%)

Black (0%)



Cyan (0%)

Magenta (31%)

Yellow (33%)

# Brightness & Saturation Gradients

These gradients show how the Decimal color 16756652 changes by changing the brightness by 10 percent. The first figure shows a shift by +10% for each color and the second figure -10%.

Similar to the brightness gradients but the following saturation gradients show a change of the Decimal color 16756652 by changing the saturation by 10% instead.



 16756652

 16756652

16777215

 14783633

 16771043

 12876408

 11034719

 9193543

 7417905

 5642268

 3997698

 2490369

 0

 16756652

 16756652

 16750227

 16763078

 16744057

 16769247

 16737632

 16775673

 16731462

16777215

 16725037

 16718867

 16713984

# Harmonies

## Analogous

The Analogous color harmony consists of three colors that are next to each other on the color wheel.



16428746



16756652



16037524

# Triad

The Triadic color harmony groups three colors that are evenly spaced from another and form a triangle on the color wheel.



16756652



10342561



9881854

# Complementary

The Complementary color scheme is a pair of colors which are on the opposite of each other on the color wheel.



16756652



11336959

# Split Complementary

Split-complementary colors differ from the complementary color scheme. The scheme consists of three colors, the original color and two neighbors of the complement color.



7459059



16756652



8180925

# Square

The Square scheme is like the rectangle color scheme, but the four colors are evenly spaced on the color wheel.



16756652



12568973



6804699



12697337

# Rectangle

The Rectangle color scheme consists of four colors that form a rectangle on the color wheel.



16756652



15121803



6804699



8965116

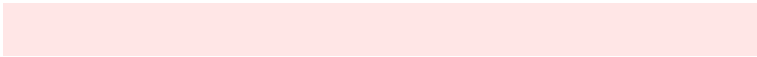


# Sweetspot

The Sweet Spot groups the original color and five complimentary colors.



16756652



16770790



16755964



8417648



0



8421504



# Same Dimension

The Same Dimension uses a secret algorithm to generate beautiful new colors.



16756652



16752540



16767148



8418163



12519168



4194816



# Inverse Universe

The Inverse Universe completely reimagines the original color for something new.



11336959



10288127



11326463



7569280



47295

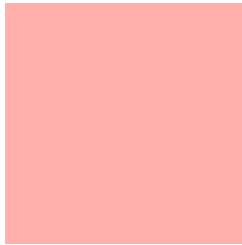


15680



# Previews

## White Background



This preview shows how the Decimal color 16756652 looks on a white background.

## Color Contrast Check

Large Text (above 18pt) WCAG AA × Fail

Any Text WCAG AA × Fail

Large Text (above 18pt) WCAG AAA × Fail

Any Text WCAG AAA × Fail

# Black Background



This preview shows how the Decimal color 16756652 looks on a black background.

## Color Contrast Check

Large Text (above 18pt) WCAG AA ✓ Pass

Any Text WCAG AA ✓ Pass

Large Text (above 18pt) WCAG AAA ✓ Pass

Any Text WCAG AAA ✓ Pass

If you want to check with other color combinations, try the [Color Contrast Checker](#).



## Decimal 16756652 Background



This preview shows how black text looks on a background with the Decimal color 16756652.



This preview shows how white text looks on a background with the Decimal color 16756652.

# Color Blindness Simulation

Color vision deficiency is a very complex topic, and I could not describe the different causes any better than Wikipedia does, so if you want to learn more, you should check out their [article about color blindness](#).

## Dichromacy



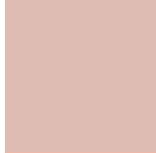


**Tritanopia**  
16756410

# Trichromacy



**Original Color**  
16756652



**Protanomaly**  
14597299



**Deuteranomaly**  
15448234



**Tritanomaly**  
16756405

# Monochromacy



**Original Color**  
16756652



**Achromatopsia**  
13092807



**Achromatomaly**  
14401213

# CSS Examples

## Text

The CSS property to change the color of the text to Decimal 16756652 is called "color". The color property can be set on classes, ids or directly on the HTML element.

This example shows how text in the color #FFAFAC looks like.

```
.text, #text, p{  
  color:#FFAFAC  
}
```

If you want to add a text shadow in that color use the text-shadow property, you can generate a text shadow directly with our [CSS Text Shadow Generator](#).

Here you see how black text with a 4 pixel #FFAFAC colored shadow looks like.

```
.shadow{ text-shadow: 4px 4px 2px #FFAFAC
}
```

## Border

The CSS property to change the border of an element to Decimal 16756652 is called "border". The border property can be set on classes, ids or directly on the HTML element.

This example shows the color as border, it can be applied via the CSS property "border" or "border-color".

```
.border, #border, table{ border:4px solid
#FFAFAC }
```

If only the border color should be changed use the property `border-color`.

```
.border{ border-color:#FFAFAC }
```

If you want to add a box shadow in that color use:

Here you see how a box with a 4 pixel #FFAFAC colored shadow looks like.

```
.boxshadow{ -moz-box-shadow:4px 4px 4px  
4px #FFAFAC; -webkit-box-shadow:4px 4px  
4px 4px #FFAFAC; box-shadow:4px 4px 4px  
4px #FFAFAC }
```

# Background

The CSS property to change the background color of an element to Decimal 16756652 is called "background". The background property can be set on classes, ids or directly on the HTML element.

```
.background, #background, body{  
background:#FFAFAC }
```

If only the background color should be changed can be used:

```
.background{ background-color:#FFAFAC }
```

This example shows the color as background, it is applied via the CSS property "background".

To optimize and compress your CSS code, you can use our [online CSS compressor and optimizer](#) based on csstidy. If you want to create a linear or radial gradient as background or border, check our [CSS Gradient Generator](#).



Hey! You found this booklet interesting? Support Converting Colors with the new Membership Option!

The pro membership hides all ads, plus gives you double the colors in the color bucket, and more awesome pro features!

**[Learn more, Memberships starting at \\$2.50/m!](#)**

**Follow me  
on Twitter!**

@ConvertingColor