

Converting Colors

Decimal(16756922)

Have a look what the booklet for
Decimal(16756922) contains.

Decimal(16756922)	3
<i>Conversions</i>	4
<i>Details</i>	6
<i>Harmonies</i>	11
<i>Previews</i>	23
<i>Color Blindness Simulation</i>	26
<i>CSS Examples</i>	29

Color

Decimal(16756922)

Conversions

Conversions Part 1

Format	Color
Hex	FFB0BA
RGB	255, 176, 186
RGB Percent	100%, 69%, 73%
CMY	0.0000, 0.3098, 0.2706
CMYK	0.00, 0.31, 0.27, 0.00
HSL	352°, 100%, 85%
HSV	352°, 31%, 100%
XYZ	65.6283, 55.8558, 53.7766
YIQ	200.7610, 43.8740, 19.8580

Conversions

Conversions Part 2

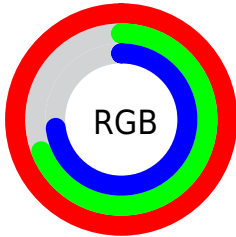
Format	Color
R _Y B	255, 176, 186
Decimal	16756922
CIE Lab	79.53, 30.16, 6.62
CIE LCh	80, 30.874, 12.379
Yxy	55.8558, 0.3745, 0.3187
Android (android.graphics.Color)	4294947002 (0xFFFFB0BA)
YUV	200.7610, -7.2772, 47.5676
Hunter-Lab	74.7368, 25.9561, 9.6538

Details

The Decimal color **16756922** is a light color, and the websafe version is hex **FF9999**. A complement of this color would be **11599861**, and the grayscale version is **13224393**.

A 20% lighter version of the original color is **16771314**, and **12942213** is the 20% darker color. If you saturate the color by 10%, you get **16750244**, and if you desaturate by 10%, it is **16763600**.

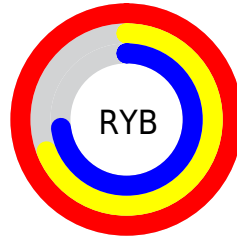
Distribution



Red (100%)

Green (69%)

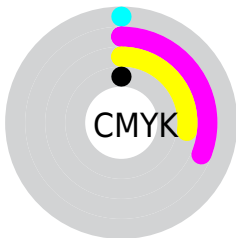
Blue (73%)



Red (100%)

Yellow (69%)

Blue (73%)

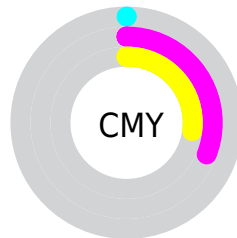


Cyan (0%)

Magenta (31%)

Yellow (27%)

Black (0%)



Cyan (0%)

Magenta (31%)

Yellow (27%)

Brightness & Saturation Gradients

These gradients show how the Decimal color 16756922 changes by changing the brightness by 10 percent. The first figure shows a shift by +10% for each color and the second figure -10%.

Similar to the brightness gradients but the following saturation gradients show a change of the Decimal color 16756922 by changing the saturation by 10% instead.

 16756922

 16756922

16777215

 14849439

 16771314

 12942213

 11034988

 9259092

 7483453

 5773607

 4063250

 2686977

 0

 16756922

 16756922

 16750244

 16763600

 16743821

 16770023

 16737143

 16776701

 16730721

16777215

 16724299

 16717620

 16711712

Harmonies

Analogous

The Analogous color harmony consists of three colors that are next to each other on the color wheel.



15971031



16756922



16496032

Triad

The Triadic color harmony groups three colors that are evenly spaced from another and form a triangle on the color wheel.



16756922



11390874



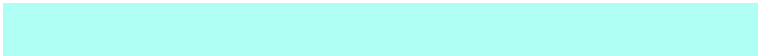
9031163

Complementary

The Complementary color scheme is a pair of colors which are on the opposite of each other on the color wheel.



16756922



11599861

Split Complementary

Split-complementary colors differ from the complementary color scheme. The scheme consists of three colors, the original color and two neighbors of the complement color.



7328747



16756922



9229491

Square

The Square scheme is like the rectangle color scheme, but the four colors are evenly spaced on the color wheel.



16756922



13551501



7525840



11715837

Rectangle

The Rectangle color scheme consists of four colors that form a rectangle on the color wheel.



16756922



15776403



7525840



8310775

Sweetspot

The Sweet Spot groups the original color and five complimentary colors.



16756922



16771307



16036095



8417651



0



8421504

Same Dimension

The Same Dimension uses a secret algorithm to generate beautiful new colors.



16756922



16753069



16764336



8418164



12517400



4194312

Inverse Universe

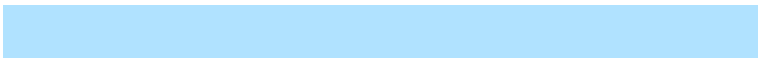
The Inverse Universe completely reimagines the original color for something new.



16756922



16753069



11592447



8418164



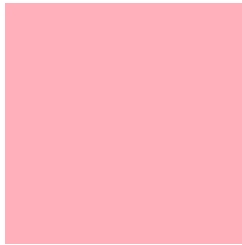
12517400



4194312

Previews

White Background



This preview shows how the Decimal color 16756922 looks on a white background.

Color Contrast Check

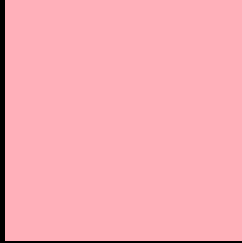
Large Text (above 18pt) WCAG AA × Fail

Any Text WCAG AA × Fail

Large Text (above 18pt) WCAG AAA × Fail

Any Text WCAG AAA × Fail

Black Background



This preview shows how the Decimal color 16756922 looks on a black background.

Color Contrast Check

Large Text (above 18pt) WCAG AA ✓ Pass

Any Text WCAG AA ✓ Pass

Large Text (above 18pt) WCAG AAA ✓ Pass

Any Text WCAG AAA ✓ Pass

If you want to check with other color combinations, try the [Color Contrast Checker](#).

Decimal 16756922 Background



This preview shows how black text looks on a background with the Decimal color 16756922.



This preview shows how white text looks on a background with the Decimal color 16756922.

Color Blindness Simulation

Color vision deficiency is a very complex topic, and I could not describe the different causes any better than Wikipedia does, so if you want to learn more, you should check out their [article about color blindness](#).


Dichromacy



Original Color
16756922

Protanopia
13223365

Deuteranopia
14598071

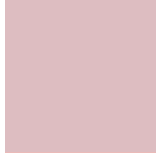


Tritanopia
16756925

Trichromacy



Original Color
16756922



Protanomaly
14532033



Deuteranomaly
15383224



Tritanomaly
16756924

Monochromacy



Original Color
16756922



Achromatopsia
13224393



Achromatomaly
14532804

CSS Examples

Text

The CSS property to change the color of the text to Decimal 16756922 is called "color". The color property can be set on classes, ids or directly on the HTML element.

This example shows how text in the color #FFB0BA looks like.

```
.text, #text, p{  
    color:#FFB0BA  
}
```

If you want to add a text shadow in that color use the text-shadow property, you can generate a text shadow directly with our [CSS Text Shadow Generator](#).

Here you see how black text with a 4 pixel #FFB0BA colored shadow looks like.

```
.shadow{ text-shadow: 4px 4px 2px #FFB0BA
}
```

Border

The CSS property to change the border of an element to Decimal 16756922 is called "border". The border property can be set on classes, ids or directly on the HTML element.

This example shows the color as border, it can be applied via the CSS property "border" or "border-color".

```
.border, #border, table{ border:4px solid
#FFB0BA }
```

If only the border color should be changed use the property `border-color`.

```
.border{ border-color:#FFB0BA }
```

If you want to add a box shadow in that color use:

Here you see how a box with a 4 pixel #FFB0BA colored shadow looks like.

```
.boxshadow{ -moz-box-shadow:4px 4px 4px  
4px #FFB0BA; -webkit-box-shadow:4px 4px  
4px 4px #FFB0BA; box-shadow:4px 4px 4px  
4px #FFB0BA }
```

Background

The CSS property to change the background color of an element to Decimal 16756922 is called "background". The background property can be set on classes, ids or directly on the HTML element.

```
.background, #background, body{  
background:#FFB0BA }
```

If only the background color should be changed can be used:

```
.background{ background-color:#FFB0BA }
```

This example shows the color as background, it is applied via the CSS property "background".

To optimize and compress your CSS code, you can use our [online CSS compressor and optimizer](#) based on csstidy. If you want to create a linear or radial gradient as background or border, check our [CSS Gradient Generator](#).

Hey! You found this booklet interesting? Support Converting Colors with the new Membership Option!

The pro membership hides all ads, plus gives you double the colors in the color bucket, and more awesome pro features!

[Learn more, Memberships starting at \\$2.50/m!](#)

**Follow me
on Twitter!**

@ConvertingColor