

# Converting Colors

Decimal(16759505)

Have a look what the booklet for  
Decimal(16759505) contains.

<b>Decimal(16759505)</b> .....	3
<i><b>Conversions</b></i> .....	4
<i><b>Details</b></i> .....	6
<i><b>Harmonies</b></i> .....	11
<i><b>Previews</b></i> .....	23
<i><b>Color Blindness Simulation</b></i> .....	26
<i><b>CSS Examples</b></i> .....	29

# **Color**

**Decimal(16759505)**

# Conversions

## Conversions Part 1

Format	Color
Hex	FFBAD1
RGB	255, 186, 209
RGB Percent	100%, 73%, 82%
CMY	0.0000, 0.2706, 0.1804
CMYK	0.00, 0.27, 0.18, 0.00
HSL	340°, 100%, 86%
HSV	340°, 27%, 100%
XYZ	70.3075, 60.9813, 68.3866
YIQ	209.2530, 33.7410, 21.7810

# Conversions

## Conversions Part 2

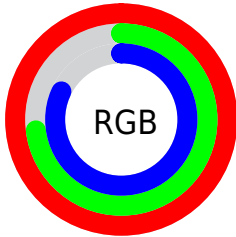
Format	Color
R <sub>Y</sub> B	255, 186, 209
Decimal	16759505
CIE Lab	82.37, 28.19, -1.68
CIE LCh	82, 28.241, 356.597
Yxy	60.9813, 0.3521, 0.3054
Android (android.graphics.Color)	4294949585 (0xFFFFBAD1)
YUV	209.2530, -0.1247, 40.1201
Hunter-Lab	78.0905, 24.0512, 2.7410

# Details

The Decimal color **16759505** is a light color, and the websafe version is hex **FFCCCC**. A complement of this color would be **12255208**, and the grayscale version is **13750737**.

A 20% lighter version of the original color is **16774143**, and **12944539** is the 20% darker color. If you saturate the color by 10%, you get **16753088**, and if you desaturate by 10%, it is **16765922**.

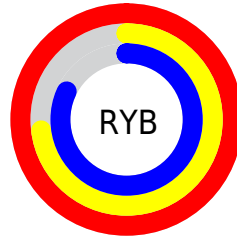
# Distribution



Red (100%)

Green (73%)

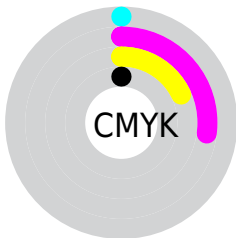
Blue (82%)



Red (100%)

Yellow (73%)

Blue (82%)

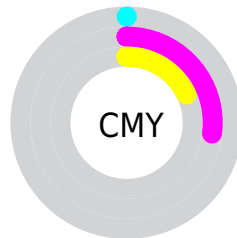


Cyan (0%)

Magenta (27%)

Yellow (18%)

Black (0%)



Cyan (0%)

Magenta (27%)

Yellow (18%)

# Brightness & Saturation Gradients

These gradients show how the Decimal color 16759505 changes by changing the brightness by 10 percent. The first figure shows a shift by +10% for each color and the second figure -10%.

Similar to the brightness gradients but the following saturation gradients show a change of the Decimal color 16759505 by changing the saturation by 10% instead.



 16759505

 16759505

16777215

 14852021

 16774143

 12944539


 11103105

 9327208

 7617104

 5907001

 4262435

 2818062

 0

 16759505

 16759505

 16753088

 16765922

 16746415

 16772595

 16739742

16777215

 16733325

 16726652

 16720235

 16713818

 16711765

# Harmonies

## Analogous

The Analogous color harmony consists of three colors that are next to each other on the color wheel.



15515626



16759505



16759734

# Triad

The Triadic color harmony groups three colors that are evenly spaced from another and form a triangle on the color wheel.



16759505



13095837



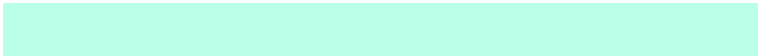
9099256

# Complementary

The Complementary color scheme is a pair of colors which are on the opposite of each other on the color wheel.



16759505



12255208

# Split Complementary

Split-complementary colors differ from the complementary color scheme. The scheme consists of three colors, the original color and two neighbors of the complement color.



8444900



16759505



11131311

# Square

The Square scheme is like the rectangle color scheme, but the four colors are evenly spaced on the color wheel.



16759505



14928536



9362633



11063551

# Rectangle

The Rectangle color scheme consists of four colors that form a rectangle on the color wheel.



16759505



16629672



9362633



8641011



# Sweetspot

The Sweet Spot groups the original color and five complimentary colors.



16759505



16772081



15252223



8418167



0



8421504



# Same Dimension

The Same Dimension uses a secret algorithm to generate beautiful new colors.



16759505



16756169



16762298



8418167



12517440



4194325



# Inverse Universe

The Inverse Universe completely reimagines the original color for something new.



16759505



16756169



12252159



8418167



12517440



4194325



# Previews

## White Background



This preview shows how the Decimal color 16759505 looks on a white background.

## Color Contrast Check

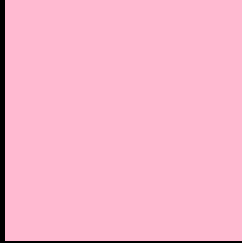
Large Text (above 18pt) WCAG AA × Fail

Any Text WCAG AA × Fail

Large Text (above 18pt) WCAG AAA × Fail

Any Text WCAG AAA × Fail

# Black Background



This preview shows how the Decimal color 16759505 looks on a black background.

## Color Contrast Check

Large Text (above 18pt) WCAG AA ✓ Pass

Any Text WCAG AA ✓ Pass

Large Text (above 18pt) WCAG AAA ✓ Pass

Any Text WCAG AAA ✓ Pass

If you want to check with other color combinations, try the [Color Contrast Checker](#).



## Decimal 16759505 Background



This preview shows how black text looks on a background with the Decimal color 16759505.



This preview shows how white text looks on a background with the Decimal color 16759505.

# Color Blindness Simulation

Color vision deficiency is a very complex topic, and I could not describe the different causes any better than Wikipedia does, so if you want to learn more, you should check out their [article about color blindness](#).


## Dichromacy



**Original Color**  
16759505

**Protanopia**  
13487324

**Deuteranopia**  
14731215



**Tritanopia**  
16694218

# Trichromacy



**Original Color**  
16759505



**Protanomaly**  
14665176



**Deuteranomaly**  
15450832

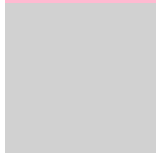


**Tritanomaly**  
16694221

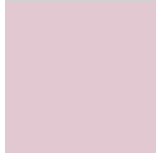
# Monochromacy



**Original Color**  
16759505



**Achromatopsia**  
13750737



**Achromatomaly**  
14862801

# CSS Examples

## Text

The CSS property to change the color of the text to Decimal 16759505 is called "color". The color property can be set on classes, ids or directly on the HTML element.

This example shows how text in the color #FFBAD1 looks like.

```
.text, #text, p{  
    color:#FFBAD1  
}
```

If you want to add a text shadow in that color use the text-shadow property, you can generate a text shadow directly with our [CSS Text Shadow Generator](#).

Here you see how black text with a 4 pixel #FFBAD1 colored shadow looks like.

```
.shadow{ text-shadow: 4px 4px 2px #FFBAD1
}
```

## Border

The CSS property to change the border of an element to Decimal 16759505 is called "border". The border property can be set on classes, ids or directly on the HTML element.

This example shows the color as border, it can be applied via the CSS property "border" or "border-color".

```
.border, #border, table{ border:4px solid
#FFBAD1 }
```

If only the border color should be changed use the property `border-color`.

```
.border{ border-color:#FFBAD1 }
```

If you want to add a box shadow in that color use:

Here you see how a box with a 4 pixel #FFBAD1 colored shadow looks like.

```
.boxshadow{ -moz-box-shadow:4px 4px 4px  
4px #FFBAD1; -webkit-box-shadow:4px 4px  
4px 4px #FFBAD1; box-shadow:4px 4px 4px  
4px #FFBAD1 }
```

# Background

The CSS property to change the background color of an element to Decimal 16759505 is called "background". The background property can be set on classes, ids or directly on the HTML element.

```
.background, #background, body{  
background:#FFBAD1 }
```

If only the background color should be changed can be used:

```
.background{ background-color:#FFBAD1 }
```

This example shows the color as background, it is applied via the CSS property "background".

To optimize and compress your CSS code, you can use our [online CSS compressor and optimizer](#) based on csstidy. If you want to create a linear or radial gradient as background or border, check our [CSS Gradient Generator](#).



Hey! You found this booklet interesting? Support Converting Colors with the new Membership Option!

The pro membership hides all ads, plus gives you double the colors in the color bucket, and more awesome pro features!

**[Learn more, Memberships starting at \\$2.50/m!](#)**

**Follow me  
on Twitter!**

@ConvertingColor