

Converting Colors

Decimal(16759723)

Have a look what the booklet for
Decimal(16759723) contains.

| | |
|--|----|
| Decimal(16759723) | 3 |
| <i>Conversions</i> | 4 |
| <i>Details</i> | 6 |
| <i>Harmonies</i> | 11 |
| <i>Previews</i> | 23 |
| <i>Color Blindness Simulation</i> | 26 |
| <i>CSS Examples</i> | 29 |

Color

Decimal(16759723)

Conversions

Conversions Part 1

| Format | Color |
|-------------|---------------------------|
| Hex | FFBBAB |
| RGB | 255, 187, 171 |
| RGB Percent | 100%, 73%, 67% |
| CMY | 0.0000, 0.2667, 0.3294 |
| CMYK | 0.00, 0.27, 0.33, 0.00 |
| HSL | 11°, 100%, 84% |
| HSV | 11°, 33%, 100% |
| XYZ | 66.3610, 59.7409, 46.5616 |
| YIQ | 205.5080, 45.6640, 9.4400 |

Conversions

Conversions Part 2

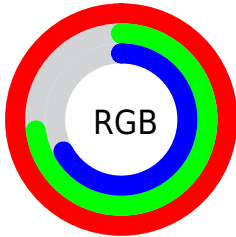
| Format | Color |
|-------------------------------------|--------------------------------|
| R _Y B | 255, 191, 171 |
| Decimal | 16759723 |
| CIE Lab | 81.70, 22.46, 17.76 |
| CIE LCh | 82, 28.637, 38.341 |
| Yxy | 59.7409, 0.3843, 0.3460 |
| Android (android.graphics.Color) | 4294949803 (0xFFFFBBAB) |
| YUV | 205.5080, -17.0124, 43.4045 |
| Hunter-Lab | 77.2923, 17.9938, 18.3877 |

Details

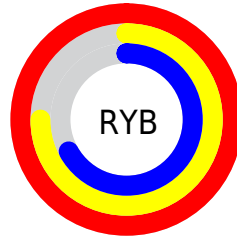
The Decimal color **16759723** is a light color, and the websafe version is hex **FFCCCC**. A complement of this color would be **11268095**, and the grayscale version is **13553358**.

A 20% lighter version of the original color is **16774114**, and **12944759** is the 20% darker color. If you saturate the color by 10%, you get **16754322**, and if you desaturate by 10%, it is **16765124**.

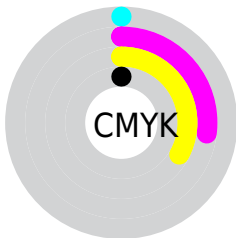
Distribution



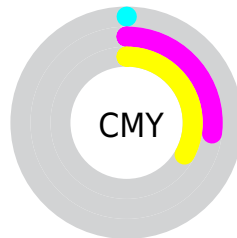
- Red (100%)
- Green (73%)
- Blue (67%)



- Red (100%)
- Yellow (75%)
- Blue (67%)



- Cyan (0%)
- Magenta (27%)
- Yellow (33%)
- Black (0%)



- Cyan (0%)
- Magenta (27%)
- Yellow (33%)

Brightness & Saturation Gradients

These gradients show how the Decimal color 16759723 changes by changing the brightness by 10 percent. The first figure shows a shift by +10% for each color and the second figure -10%.

Similar to the brightness gradients but the following saturation gradients show a change of the Decimal color 16759723 by changing the saturation by 10% instead.

 16759723

 16759723

16777215

 14852240

 16774114

 12944759

 11037790

 9261894

 7486512

 5711131

 4066817

 2555904

 0

 16759723

 16759723

 16754322

 16765124

 16749176

 16770270

 16743775

 16775672

 16738373

16777215

 16733228

 16727826

 16724224

Harmonies

Analogous

The Analogous color harmony consists of three colors that are next to each other on the color wheel.



16758980



16759723



15778714

Triad

The Triadic color harmony groups three colors that are evenly spaced from another and form a triangle on the color wheel.



16759723



10213814



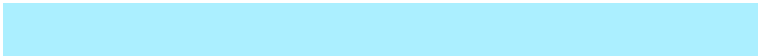
11914239

Complementary

The Complementary color scheme is a pair of colors which are on the opposite of each other on the color wheel.



16759723



11268095

Split Complementary

Split-complementary colors differ from the complementary color scheme. The scheme consists of three colors, the original color and two neighbors of the complement color.



9556988



16759723



8641234

Square

The Square scheme is like the rectangle color scheme, but the four colors are evenly spaced on the color wheel.



16759723



12178336



8247787



14271221

Rectangle

The Rectangle color scheme consists of four colors that form a rectangle on the color wheel.



16759723



14731670



8247787



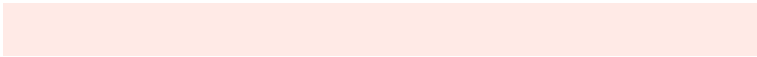
11063039

Sweetspot

The Sweet Spot groups the original color and five complimentary colors.



16759723



16771814



16755696



8418160



0



8421504

Same Dimension

The Same Dimension uses a secret algorithm to generate beautiful new colors.



16759723



16755865



16770219



8418675



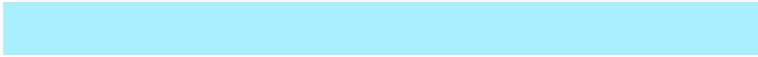
12526592



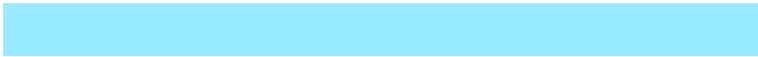
4197376

Inverse Universe

The Inverse Universe completely reimagines the original color for something new.



11268095



10087679



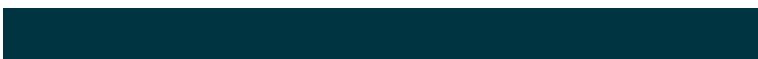
11257599



7568768



39871



13376

Previews

White Background



This preview shows how the Decimal color 16759723 looks on a white background.

Color Contrast Check

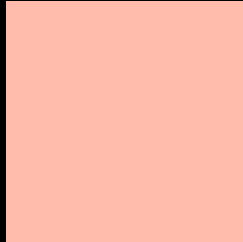
Large Text (above 18pt) WCAG AA × Fail

Any Text WCAG AA × Fail

Large Text (above 18pt) WCAG AAA × Fail

Any Text WCAG AAA × Fail

Black Background



This preview shows how the Decimal color 16759723 looks on a black background.

Color Contrast Check

Large Text (above 18pt) WCAG AA ✓ Pass

Any Text WCAG AA ✓ Pass

Large Text (above 18pt) WCAG AAA ✓ Pass

Any Text WCAG AAA ✓ Pass

If you want to check with other color combinations, try the [Color Contrast Checker](#).

Decimal 16759723 Background



This preview shows how black text looks on a background with the Decimal color 16759723.

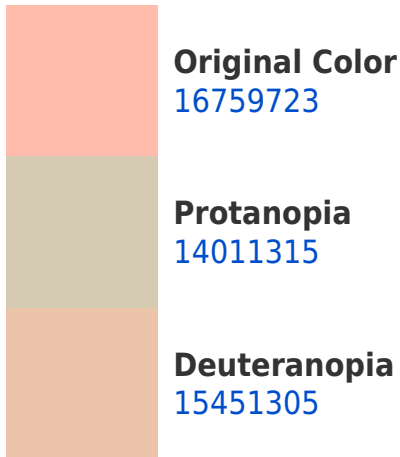



This preview shows how white text looks on a background with the Decimal color 16759723.

Color Blindness Simulation

Color vision deficiency is a very complex topic, and I could not describe the different causes any better than Wikipedia does, so if you want to learn more, you should check out their [article about color blindness](#).

Dichromacy





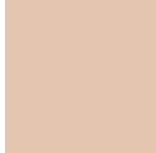
Tritanopia
16758982

Trichromacy



Original Color

16759723



Protanomaly

14992816



Deuteranomaly

15909290



Tritanomaly

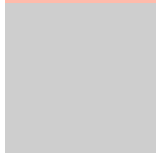
16759228

Monochromacy



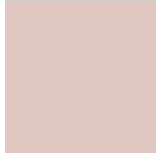
Original Color

16759723



Achromatopsia

13553358



Achromatomaly

14731201

CSS Examples

Text

The CSS property to change the color of the text to Decimal 16759723 is called "color". The color property can be set on classes, ids or directly on the HTML element.

This example shows how text in the color #FFBBAB looks like.

```
.text, #text, p{  
  color:#FFBBAB  
}
```

If you want to add a text shadow in that color use the text-shadow property, you can generate a text shadow directly with our [CSS Text Shadow Generator](#).

Here you see how black text with a 4 pixel #FFBBAB colored shadow looks like.

```
.shadow{ text-shadow: 4px 4px 2px #FFBBAB
}
```

Border

The CSS property to change the border of an element to Decimal 16759723 is called "border". The border property can be set on classes, ids or directly on the HTML element.

This example shows the color as border, it can be applied via the CSS property "border" or "border-color".

```
.border, #border, table{ border:4px solid
#FFBBAB }
```

If only the border color should be changed use the property `border-color`.

```
.border{ border-color:#FFBBAB }
```

If you want to add a box shadow in that color use:

Here you see how a box with a 4 pixel #FFBBAB colored shadow looks like.

```
.boxshadow{ -moz-box-shadow:4px 4px 4px  
4px #FFBBAB; -webkit-box-shadow:4px 4px  
4px 4px #FFBBAB; box-shadow:4px 4px 4px  
4px #FFBBAB }
```

Background

The CSS property to change the background color of an element to Decimal 16759723 is called "background". The background property can be set on classes, ids or directly on the HTML element.

```
.background, #background, body{  
background:#FFBBAB }
```

If only the background color should be changed can be used:

```
.background{ background-color:#FFBBAB }
```

This example shows the color as background, it is applied via the CSS property "background".

To optimize and compress your CSS code, you can use our [online CSS compressor and optimizer](#) based on csstidy. If you want to create a linear or radial gradient as background or border, check our [CSS Gradient Generator](#).

Hey! You found this booklet interesting? Support Converting Colors with the new Membership Option!

The pro membership hides all ads, plus gives you double the colors in the color bucket, and more awesome pro features!

[Learn more, Memberships starting at \\$2.50/m!](#)

**Follow me
on Twitter!**

@ConvertingColor