

# Converting Colors

Decimal(16761282)

Have a look what the booklet for  
Decimal(16761282) contains.

<b>Decimal(16761282)</b> .....	3
<i><b>Conversions</b></i> .....	4
<i><b>Details</b></i> .....	6
<i><b>Harmonies</b></i> .....	11
<i><b>Previews</b></i> .....	23
<i><b>Color Blindness Simulation</b></i> .....	26
<i><b>CSS Examples</b></i> .....	29

# **Color**

**Decimal(16761282)**

# Conversions

## Conversions Part 1

Format	Color
Hex	FFC1C2
RGB	255, 193, 194
RGB Percent	100%, 76%, 76%
CMY	0.0000, 0.2431, 0.2392
CMYK	0.00, 0.24, 0.24, 0.00
HSL	359°, 100%, 88%
HSV	359°, 24%, 100%
XYZ	70.0476, 63.2950, 59.5642
YIQ	211.6520, 36.6310, 13.4550

# Conversions

## Conversions Part 2

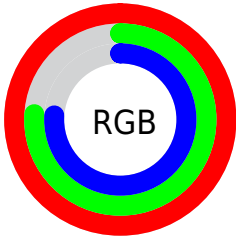
<b>Format</b>	<b>Color</b>
R <sub>Y</sub> B	255, 193, 194
Decimal	16761282
CIE <sub>Lab</sub>	83.60, 22.34, 8.15
CIE <sub>LCh</sub>	84, 23.777, 20.043
Y <sub>xy</sub>	63.2950, 0.3631, 0.3281
Android (android.graphics.Color)	4294951362 (0xFFFFC1C2)
Y <sub>UV</sub>	211.6520, -8.7024, 38.0162
Hunter-Lab	79.5581, 17.9350, 11.3010

# Details

The Decimal color **16761282** is a light color, and the websafe version is hex **FFCCCC**. A complement of this color would be **12713982**, and the grayscale version is **13948116**.

A 20% lighter version of the original color is **16775930**, and **12946316** is the 20% darker color. If you saturate the color by 10%, you get **16754857**, and if you desaturate by 10%, it is **16767963**.

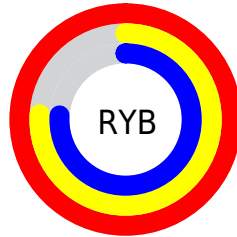
# Distribution



Red (100%)

Green (76%)

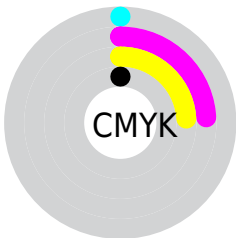
Blue (76%)



Red (100%)

Yellow (76%)

Blue (76%)

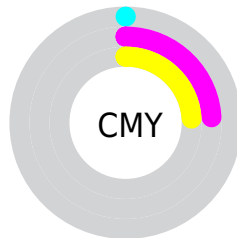


Cyan (0%)

Magenta (24%)

Yellow (24%)

Black (0%)



Cyan (0%)

Magenta (24%)

Yellow (24%)

# Brightness & Saturation Gradients

These gradients show how the Decimal color 16761282 changes by changing the brightness by 10 percent. The first figure shows a shift by +10% for each color and the second figure -10%.

Similar to the brightness gradients but the following saturation gradients show a change of the Decimal color 16761282 by changing the saturation by 10% instead.



 16761282

 16761282

16777215

 14853799

 16775930

 12946316

 11104627

 9328986

 7553347

 5909037

 4264984

 2818048

 0

 16761282

 16761282

 16754857

 16767963

 16748176

 16774388

 16741751

16777215

 16735070

 16728645

 16721963

 16715538

 16711684

# Harmonies

## Analogous

The Analogous color harmony consists of three colors that are next to each other on the color wheel.



16368089



16761282



16369071

# Triad

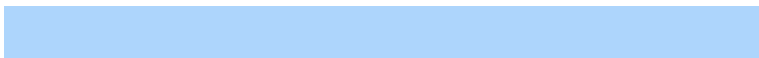
The Triadic color harmony groups three colors that are evenly spaced from another and form a triangle on the color wheel.



16761282



12114355



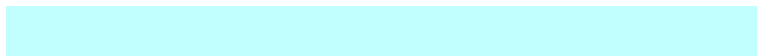
11392508

# Complementary

The Complementary color scheme is a pair of colors which are on the opposite of each other on the color wheel.



16761282



12713982

# Split Complementary

Split-complementary colors differ from the complementary color scheme. The scheme consists of three colors, the original color and two neighbors of the complement color.



9951986



16761282



10608072

# Square

The Square scheme is like the rectangle color scheme, but the four colors are evenly spaced on the color wheel.



16761282



13816998



9690591



13291002

# Rectangle

The Rectangle color scheme consists of four colors that form a rectangle on the color wheel.



16761282



15714983



9690591



10803194



# Sweetspot

The Sweet Spot groups the original color and five complimentary colors.



16761282



16772589



16695807



8418677



0



8421504



# Same Dimension

The Same Dimension uses a secret algorithm to generate beautiful new colors.



16761282



16758198



16768961



8418163



12517379



4194305



# Inverse Universe

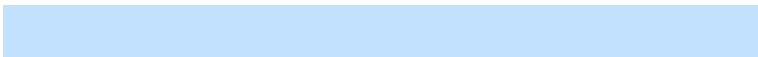
The Inverse Universe completely reimagines the original color for something new.



16761282



16758198



12706303



8418163



12517379



4194305



# Previews

## White Background



This preview shows how the Decimal color 16761282 looks on a white background.

## Color Contrast Check

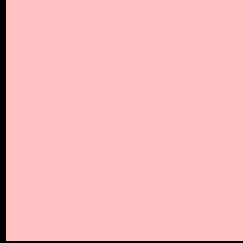
Large Text (above 18pt) WCAG AA × Fail

Any Text WCAG AA × Fail

Large Text (above 18pt) WCAG AAA × Fail

Any Text WCAG AAA × Fail

# Black Background



This preview shows how the Decimal color 16761282 looks on a black background.

## Color Contrast Check

Large Text (above 18pt) WCAG AA ✓ Pass

Any Text WCAG AA ✓ Pass

Large Text (above 18pt) WCAG AAA ✓ Pass

Any Text WCAG AAA ✓ Pass

If you want to check with other color combinations, try the [Color Contrast Checker](#).



## Decimal 16761282 Background



This preview shows how black text looks on a background with the Decimal color 16761282.

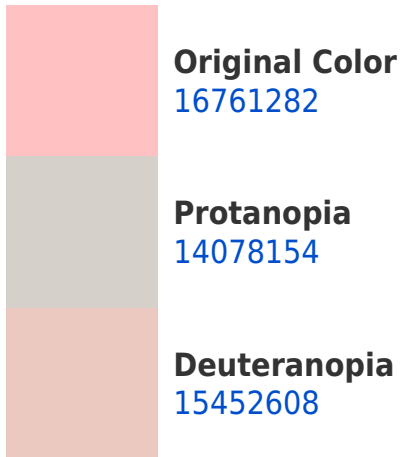


This preview shows how white text looks on a background with the Decimal color 16761282.

# Color Blindness Simulation

Color vision deficiency is a very complex topic, and I could not describe the different causes any better than Wikipedia does, so if you want to learn more, you should check out their [article about color blindness](#).

## Dichromacy





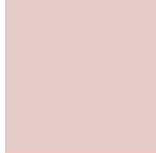
**Tritanopia**  
16761038

# Trichromacy



**Original Color**

16761282



**Protanomaly**

15059911



**Deuteranomaly**

15910593



**Tritanomaly**

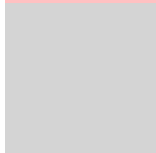
16761034

# Monochromacy



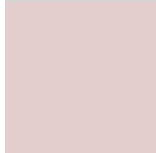
**Original Color**

16761282



**Achromatopsia**

13948116



**Achromatomaly**

14994893

# CSS Examples

## Text

The CSS property to change the color of the text to Decimal 16761282 is called "color". The color property can be set on classes, ids or directly on the HTML element.

This example shows how text in the color #FFC1C2 looks like.

```
.text, #text, p{  
    color:#FFC1C2  
}
```

If you want to add a text shadow in that color use the text-shadow property, you can generate a text shadow directly with our [CSS Text Shadow Generator](#).

Here you see how black text with a 4 pixel #FFC1C2 colored shadow looks like.

```
.shadow{ text-shadow: 4px 4px 2px #FFC1C2
}
```

## Border

The CSS property to change the border of an element to Decimal 16761282 is called "border". The border property can be set on classes, ids or directly on the HTML element.

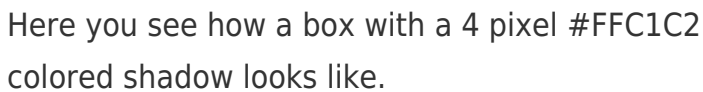
This example shows the color as border, it can be applied via the CSS property "border" or "border-color".

```
.border, #border, table{ border:4px solid
#FFC1C2 }
```

If only the border color should be changed use the property `border-color`.

```
.border{ border-color:#FFC1C2 }
```

If you want to add a box shadow in that color use:



Here you see how a box with a 4 pixel #FFC1C2 colored shadow looks like.

```
.boxshadow{ -moz-box-shadow:4px 4px 4px  
4px #FFC1C2; -webkit-box-shadow:4px 4px  
4px 4px #FFC1C2; box-shadow:4px 4px 4px  
4px #FFC1C2 }
```

# Background

The CSS property to change the background color of an element to Decimal 16761282 is called "background". The background property can be set on classes, ids or directly on the HTML element.

```
.background, #background, body{  
background:#FFC1C2 }
```

If only the background color should be changed can be used:

```
.background{ background-color:#FFC1C2 }
```

This example shows the color as background, it is applied via the CSS property "background".

To optimize and compress your CSS code, you can use our [online CSS compressor and optimizer](#) based on csstidy. If you want to create a linear or radial gradient as background or border, check our [CSS Gradient Generator](#).



Hey! You found this booklet interesting? Support Converting Colors with the new Membership Option!

The pro membership hides all ads, plus gives you double the colors in the color bucket, and more awesome pro features!

**[Learn more, Memberships starting at \\$2.50/m!](#)**

**Follow me  
on Twitter!**

@ConvertingColor