

# Converting Colors

Decimal(16761788)

Have a look what the booklet for  
Decimal(16761788) contains.

<b>Decimal(16761788)</b> .....	3
<i><b>Conversions</b></i> .....	4
<i><b>Details</b></i> .....	6
<i><b>Harmonies</b></i> .....	11
<i><b>Previews</b></i> .....	23
<i><b>Color Blindness Simulation</b></i> .....	26
<i><b>CSS Examples</b></i> .....	29

# **Color**

**Decimal(16761788)**

# Conversions

## Conversions Part 1

Format	Color
Hex	FFC3BC
RGB	255, 195, 188
RGB Percent	100%, 76%, 74%
CMY	0.0000, 0.2353, 0.2627
CMYK	0.00, 0.24, 0.26, 0.00
HSL	6°, 100%, 87%
HSV	6°, 26%, 100%
XYZ	69.8322, 63.9211, 56.2344
YIQ	212.1420, 38.0070, 10.5430

# Conversions

## Conversions Part 2

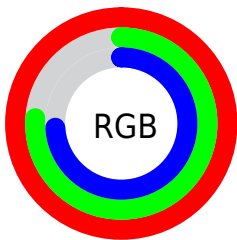
Format	Color
R <sub>Y</sub> B	255, 196, 188
Decimal	16761788
CIE Lab	83.92, 20.46, 11.82
CIE LCh	84, 23.631, 30.012
Yxy	63.9211, 0.3676, 0.3364
Android (android.graphics.Color)	4294951868 (0xFFFFC3BC)
YUV	212.1420, -11.9020, 37.5865
Hunter-Lab	79.9506, 15.9957, 14.2630

# Details

The Decimal color **16761788** is a light color, and the websafe version is hex **FFCCCC**. A complement of this color would be **12384511**, and the grayscale version is **13948116**.

A 20% lighter version of the original color is **16776436**, and **12946823** is the 20% darker color. If you saturate the color by 10%, you get **16755875**, and if you desaturate by 10%, it is **16767702**.

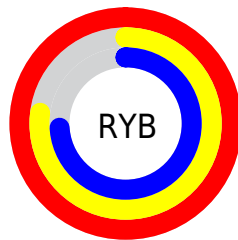
# Distribution



Red (100%)

Green (76%)

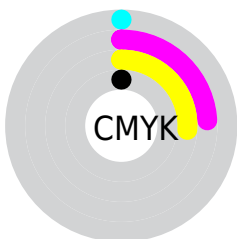
Blue (74%)



Red (100%)

Yellow (77%)

Blue (74%)

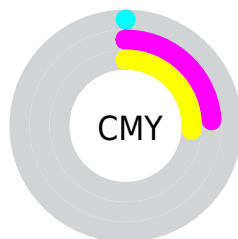


Cyan (0%)

Magenta (24%)

Yellow (26%)

Black (0%)



Cyan (0%)

Magenta (24%)

Yellow (26%)

# Brightness & Saturation Gradients

These gradients show how the Decimal color 16761788 changes by changing the brightness by 10 percent. The first figure shows a shift by +10% for each color and the second figure -10%.

Similar to the brightness gradients but the following saturation gradients show a change of the Decimal color 16761788 by changing the saturation by 10% instead.



 16761788


 16761788

16777215

 14854305

 16776436

 12946823

 11105133

 9329237

 7553854

 5844008

 4199956

 2752512

 0

 16761788

 16761788

 16755875

 16767702

 16749961

 16773615

 16744048

16777215

 16738390

 16732477

 16726563

 16720650

 16718592

# Harmonies

## Analogous

The Analogous color harmony consists of three colors that are next to each other on the color wheel.



16630482



16761788



16107691

# Triad

The Triadic color harmony groups three colors that are evenly spaced from another and form a triangle on the color wheel.



16761788



11656378



12047357

# Complementary

The Complementary color scheme is a pair of colors which are on the opposite of each other on the color wheel.



16761788



12384511

# Split Complementary

Split-complementary colors differ from the complementary color scheme. The scheme consists of three colors, the original color and two neighbors of the complement color.



10410743



16761788



10280656

# Square

The Square scheme is like the rectangle color scheme, but the four colors are evenly spaced on the color wheel.



16761788



13293482



9756135



14011640

# Rectangle

The Rectangle color scheme consists of four colors that form a rectangle on the color wheel.



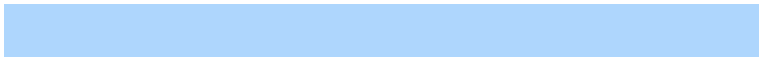
16761788



15322534



9756135



11458301

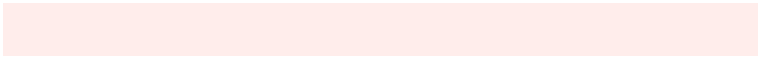


# Sweetspot

The Sweet Spot groups the original color and five complimentary colors.



16761788



16772587



16760056



8418419



0



8421504



# Same Dimension

The Same Dimension uses a secret algorithm to generate beautiful new colors.



16761788



16758445



16770236



8418419



12522496

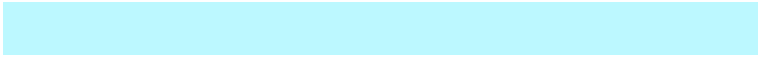


4196096

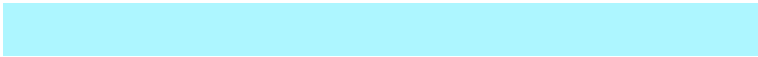


# Inverse Universe

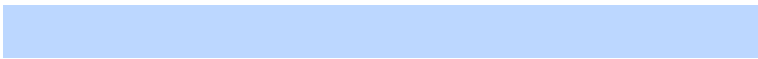
The Inverse Universe completely reimagines the original color for something new.



12384511



11400959



12376063



7569024



43967



14656



# Previews

## White Background



This preview shows how the Decimal color 16761788 looks on a white background.

## Color Contrast Check

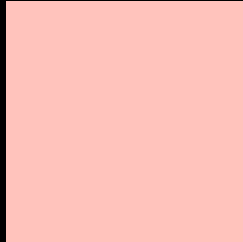
Large Text (above 18pt) WCAG AA × Fail

Any Text WCAG AA × Fail

Large Text (above 18pt) WCAG AAA × Fail

Any Text WCAG AAA × Fail

# Black Background



This preview shows how the Decimal color 16761788 looks on a black background.

## Color Contrast Check

Large Text (above 18pt) WCAG AA ✓ Pass

Any Text WCAG AA ✓ Pass

Large Text (above 18pt) WCAG AAA ✓ Pass

Any Text WCAG AAA ✓ Pass

If you want to check with other color combinations, try the [Color Contrast Checker](#).



## Decimal 16761788 Background



This preview shows how black text looks on a background with the Decimal color 16761788.

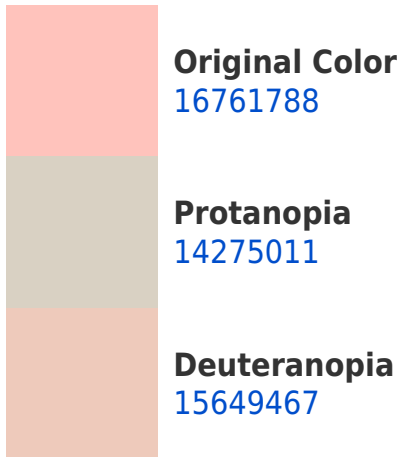



This preview shows how white text looks on a background with the Decimal color 16761788.

# Color Blindness Simulation

Color vision deficiency is a very complex topic, and I could not describe the different causes any better than Wikipedia does, so if you want to learn more, you should check out their [article about color blindness](#).

## Dichromacy



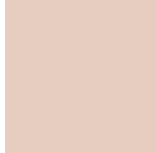


**Tritanopia**  
16761295

# Trichromacy



**Original Color**  
16761788



**Protanomaly**  
15191232



**Deuteranomaly**  
16041915

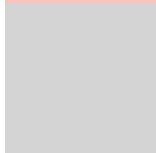


**Tritanomaly**  
16761544

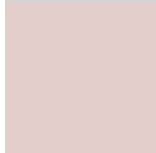
# Monochromacy



**Original Color**  
16761788



**Achromatopsia**  
13948116



**Achromatomaly**  
14995147

# CSS Examples

## Text

The CSS property to change the color of the text to Decimal 16761788 is called "color". The color property can be set on classes, ids or directly on the HTML element.

This example shows how text in the color #FFC3BC looks like.

```
.text, #text, p{  
    color:#FFC3BC  
}
```

If you want to add a text shadow in that color use the text-shadow property, you can generate a text shadow directly with our [CSS Text Shadow Generator](#).

Here you see how black text with a 4 pixel #FFC3BC colored shadow looks like.

```
.shadow{ text-shadow: 4px 4px 2px #FFC3BC }  
}
```

## Border

The CSS property to change the border of an element to Decimal 16761788 is called "border". The border property can be set on classes, ids or directly on the HTML element.

This example shows the color as border, it can be applied via the CSS property "border" or "border-color".

```
.border, #border, table{ border:4px solid #FFC3BC }  
}
```

If only the border color should be changed use the property `border-color`.

```
.border{ border-color:#FFC3BC }
```

If you want to add a box shadow in that color use:

Here you see how a box with a 4 pixel #FFC3BC colored shadow looks like.

```
.boxshadow{ -moz-box-shadow:4px 4px 4px  
4px #FFC3BC; -webkit-box-shadow:4px 4px  
4px 4px #FFC3BC; box-shadow:4px 4px 4px  
4px #FFC3BC }
```

# Background

The CSS property to change the background color of an element to Decimal 16761788 is called "background". The background property can be set on classes, ids or directly on the HTML element.

```
.background, #background, body{  
background:#FFC3BC }
```

If only the background color should be changed can be used:

```
.background{ background-color:#FFC3BC }
```

This example shows the color as background, it is applied via the CSS property "background".

To optimize and compress your CSS code, you can use our [online CSS compressor and optimizer](#) based on csstidy. If you want to create a linear or radial gradient as background or border, check our [CSS Gradient Generator](#).



Hey! You found this booklet interesting? Support Converting Colors with the new Membership Option!

The pro membership hides all ads, plus gives you double the colors in the color bucket, and more awesome pro features!

**[Learn more, Memberships starting at \\$2.50/m!](#)**

**Follow me  
on Twitter!**

@ConvertingColor