

# Converting Colors

Decimal(2431505)

Have a look what the booklet for  
Decimal(2431505) contains.

<b>Decimal(2431505)</b> .....	3
<i><b>Conversions</b></i> .....	4
<i><b>Details</b></i> .....	6
<i><b>Harmonies</b></i> .....	11
<i><b>Previews</b></i> .....	23
<i><b>Color Blindness Simulation</b></i> .....	26
<i><b>CSS Examples</b></i> .....	29

# Color

**Decimal(2431505)**

# Conversions

## Conversions Part 1

Format	Color
Hex	251A11
RGB	37, 26, 17
RGB Percent	15%, 10%, 7%
CMY	0.8549, 0.8980, 0.9333
CMYK	0.00, 0.30, 0.54, 0.85
HSL	27°, 37%, 11%
HSV	27°, 54%, 15%
XYZ	1.2335, 1.1726, 0.6916
YIQ	28.2630, 9.4450, -0.4670

# Conversions

## Conversions Part 2

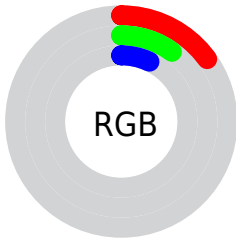
<b>Format</b>	<b>Color</b>
<b>R<sub>YB</sub></b>	37, 33, 17
Decimal	2431505
CIE <sub>Lab</sub>	10.35, 3.91, 7.96
CIE <sub>LCh</sub>	10, 8.866, 63.847
Yxy	1.1726, 0.3982, 0.3785
Android (android.graphics.Color)	4280621585 (0xFF251A11)
YUV	28.2630, -5.5527, 7.6623
Hunter-Lab	10.8285, 1.3837, 3.7931

# Details

The Decimal color **2431505** is a dark color, and the websafe version is hex **000000**. A complement of this color would be **1121317**, and the grayscale version is **1842204**.

A 20% lighter version of the original color is **5391675**, and **0** is the 20% darker color. If you saturate the color by 10%, you get **2430989**, and if you desaturate by 10%, it is **2432021**.

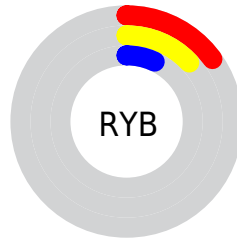
# Distribution



Red (15%)

Green (10%)

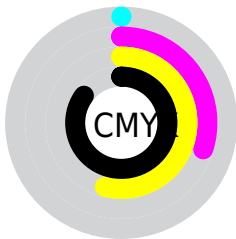
Blue (7%)



Red (15%)

Yellow (13%)

Blue (7%)

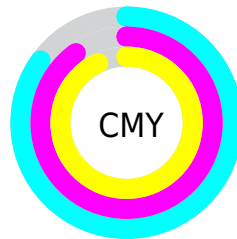


Cyan (0%)

Magenta (30%)

Yellow (54%)

Black (85%)



Cyan (85%)

Magenta (90%)

Yellow (93%)

# Brightness & Saturation Gradients

These gradients show how the Decimal color 2431505 changes by changing the brightness by 10 percent. The first figure shows a shift by +10% for each color and the second figure -10%.

Similar to the brightness gradients but the following saturation gradients show a change of the Decimal color 2431505 by changing the saturation by 10% instead.



■ 2431505

■ 2431505

■ 16776689

■ 786432

■ 5391675

■ 0

■ 7036242

■ 8680811

■ 10391428

■ 12167582

■ 14009529

■ 15917268

■ 2431505

■ 2431505

■ 2430989

■ 2432021

■ 2430474

■ 2432536

■ 2429958

■ 2433052

■ 2429442

■ 2433568

■ 2429184

■ 2434084

■ 2434599

■ 2435115

■ 2435631

■ 2436146

# Harmonies

## Analogous

The Analogous color harmony consists of three colors that are next to each other on the color wheel.



2627606



2431505



2104335

# Triad

The Triadic color harmony groups three colors that are evenly spaced from another and form a triangle on the color wheel.



2431505



794653



1972774

# Complementary

The Complementary color scheme is a pair of colors which are on the opposite of each other on the color wheel.



2431505



1121317

# Split Complementary

Split-complementary colors differ from the complementary color scheme. The scheme consists of three colors, the original color and two neighbors of the complement color.



1449000



2431505



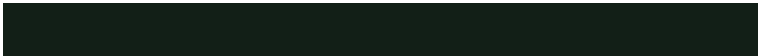
597795

# Square

The Square scheme is like the rectangle color scheme, but the four colors are evenly spaced on the color wheel.



2431505



1187607



859687



2431266

# Rectangle

The Rectangle color scheme consists of four colors that form a rectangle on the color wheel.



2431505



1842448



859687



1776423



# Sweetspot

The Sweet Spot groups the original color and five complimentary colors.



2431505



3157033



2429212



1709845



10066329



1710618



# Same Dimension

The Same Dimension uses a secret algorithm to generate beautiful new colors.



2431505



3153681



2434065



1184016



5383424



13721088



# Inverse Universe

The Inverse Universe completely reimagines the original color for something new.



1121317



1122864



1118757



1052946



11602

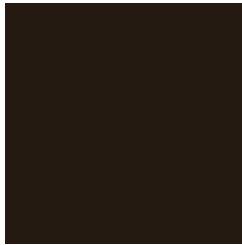


29649



# Previews

## White Background



This preview shows how the Decimal color 2431505 looks on a white background.

## Color Contrast Check

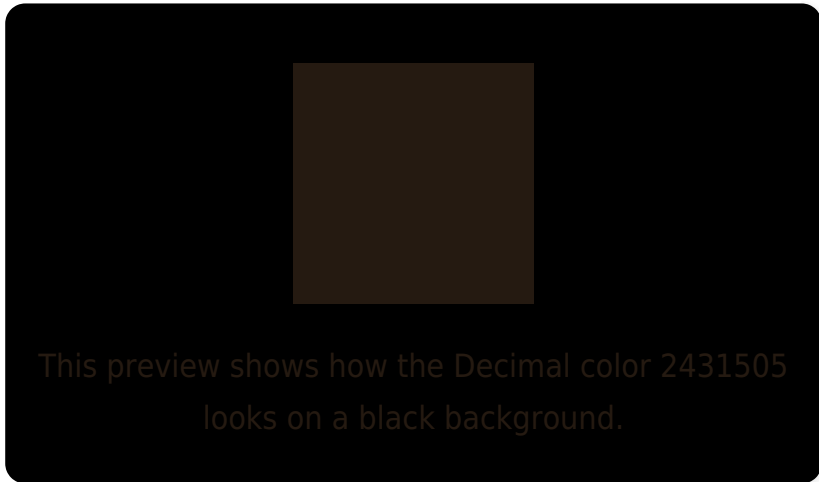
Large Text (above 18pt) WCAG AA ✓ Pass

Any Text WCAG AA ✓ Pass

Large Text (above 18pt) WCAG AAA ✓ Pass

Any Text WCAG AAA ✓ Pass

# Black Background



## Color Contrast Check

Large Text (above 18pt) WCAG AA × Fail

Any Text WCAG AA × Fail

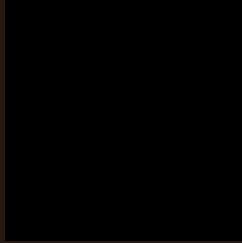
Large Text (above 18pt) WCAG AAA × Fail

Any Text WCAG AAA × Fail

If you want to check with other color combinations, try the [Color Contrast Checker](#).



## Decimal 2431505 Background



This preview shows how black text looks on a background with the Decimal color 2431505.



This preview shows how white text looks on a background with the Decimal color 2431505.

# Color Blindness Simulation

Color vision deficiency is a very complex topic, and I could not describe the different causes any better than Wikipedia does, so if you want to learn more, you should check out their [article about color blindness](#).

## Dichromacy



**Original Color**  
2431505

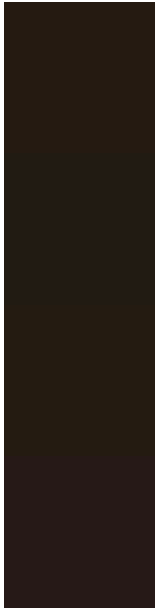
**Protanopia**  
2038802

**Deuteranopia**  
2300689



**Tritanopia**  
2496795

# Trichromacy



**Original Color**  
2431505

**Protanomaly**  
2169618

**Deuteranomaly**  
2366225

**Tritanomaly**  
2496791

# Monochromacy



**Original Color**  
2431505

**Achromatopsia**  
1842204

**Achromatomaly**  
2038552

# CSS Examples

## Text

The CSS property to change the color of the text to Decimal 2431505 is called "color". The color property can be set on classes, ids or directly on the HTML element.

This example shows how text in the color #251A11 looks like.

```
.text, #text, p{  
  color:#251A11  
}
```

If you want to add a text shadow in that color use the text-shadow property, you can generate a text shadow directly with our [CSS Text Shadow Generator](#).

Here you see how black text with a 4 pixel #251A11 colored shadow looks like.

```
.shadow{ text-shadow: 4px 4px 2px #251A11
}
```

## Border

The CSS property to change the border of an element to Decimal 2431505 is called "border". The border property can be set on classes, ids or directly on the HTML element.

This example shows the color as border, it can be applied via the CSS property "border" or "border-color".

```
.border, #border, table{ border:4px solid
#251A11 }
```

If only the border color should be changed use the property `border-color`.

```
.border{ border-color:#251A11 }
```

If you want to add a box shadow in that color use:

Here you see how a box with a 4 pixel #251A11 colored shadow looks like.

```
.boxshadow{ -moz-box-shadow:4px 4px 4px  
4px #251A11; -webkit-box-shadow:4px 4px  
4px 4px #251A11; box-shadow:4px 4px 4px  
4px #251A11 }
```

# Background

The CSS property to change the background color of an element to Decimal 2431505 is called "background". The background property can be set on classes, ids or directly on the HTML element.

```
.background, #background, body{  
background:#251A11 }
```

If only the background color should be changed can be used:

```
.background{ background-color:#251A11 }
```

This example shows the color as background, it is applied via the CSS property "background".

To optimize and compress your CSS code, you can use our [online CSS compressor and optimizer](#) based on csstidy. If you want to create a linear or radial gradient as background or border, check our [CSS Gradient Generator](#).



# Hey! You found this booklet interesting? Support Converting Colors with the new Membership Option!

The pro membership hides all ads, plus gives you double the colors in the color bucket, and more awesome pro features!

**[Learn more, Memberships starting at \\$2.50/m!](#)**

**Follow me  
on Twitter!**

@ConvertingColor