

# Converting Colors

Decimal(2624524)

Have a look what the booklet for  
Decimal(2624524) contains.

<b>Decimal(2624524)</b> .....	3
<i><b>Conversions</b></i> .....	4
<i><b>Details</b></i> .....	6
<i><b>Harmonies</b></i> .....	11
<i><b>Previews</b></i> .....	23
<i><b>Color Blindness Simulation</b></i> .....	26
<i><b>CSS Examples</b></i> .....	29

**Color**

**Decimal(2624524)**

# Conversions

## Conversions Part 1

Format	Color
Hex	280C0C
RGB	40, 12, 12
RGB Percent	16%, 5%, 5%
CMY	0.8431, 0.9529, 0.9529
CMYK	0.00, 0.70, 0.70, 0.84
HSL	0°, 54%, 10%
HSV	0°, 70%, 16%
XYZ	1.0729, 0.7406, 0.4342
YIQ	20.3720, 16.6880, 5.9360

# Conversions

## Conversions Part 2

Format	Color
<a href="#">RYB</a>	40, 12, 12
Decimal	2624524
CIELab	6.69, 14.36, 5.32
CIELCh	7, 15.316, 20.339
Yxy	0.7406, 0.4773, 0.3295
Android (android.graphics.Color)	4280814604 (0xFF280C0C)
YUV	20.3720, -4.1274, 17.2138
Hunter-Lab	8.6058, 7.1937, 3.0325

# Details

The Decimal color **2624524** is a dark color, and the websafe version is hex **330000**. A complement of this color would be **796712**, and the grayscale version is **1315860**.

A 20% lighter version of the original color is **5650232**, and **0** is the 20% darker color. If you saturate the color by 10%, you get **2623496**, and if you desaturate by 10%, it is **2625552**.

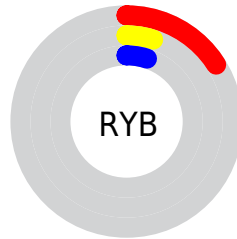
# Distribution



Red (16%)

Green (5%)

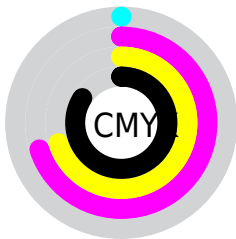
Blue (5%)



Red (16%)

Yellow (5%)

Blue (5%)

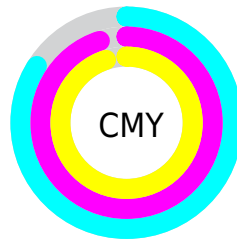


Cyan (0%)

Magenta (70%)

Yellow (70%)

Black (84%)



Cyan (84%)

Magenta (95%)

Yellow (95%)

# Brightness & Saturation Gradients

These gradients show how the Decimal color 2624524 changes by changing the brightness by 10 percent. The first figure shows a shift by +10% for each color and the second figure -10%.

Similar to the brightness gradients but the following saturation gradients show a change of the Decimal color 2624524 by changing the saturation by 10% instead.



 2624524

 2624524

 16772332

 0

 5650232

 7294542

 9004646

 10780543

 12556697

 14464180

 16306128

 2624524

 2624524

■ 2623496

■ 2625552

■ 2622468

■ 2626580

■ 2621440

■ 2627608

■ 2628636

■ 2629664

■ 2630692

■ 2631720

■ 2632748

■ 2633776

# Harmonies

## Analogous

The Analogous color harmony consists of three colors that are next to each other on the color wheel.



2493465



2624524



2494208

# Triad

The Triadic color harmony groups three colors that are evenly spaced from another and form a triangle on the color wheel.



2624524



334080



5929

# Complementary

The Complementary color scheme is a pair of colors which are on the opposite of each other on the color wheel.



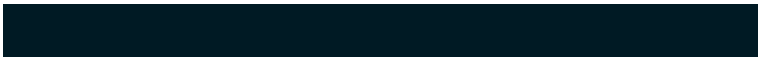
2624524



796712

# Split Complementary

Split-complementary colors differ from the complementary color scheme. The scheme consists of three colors, the original color and two neighbors of the complement color.



6692



2624524



6928

# Square

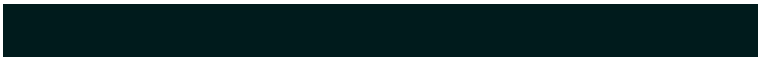
The Square scheme is like the rectangle color scheme, but the four colors are evenly spaced on the color wheel.



2624524



1316608



6940



1053480

# Rectangle

The Rectangle color scheme consists of four colors that form a rectangle on the color wheel.



2624524



2167296



6940



6184



# Sweetspot

The Sweet Spot groups the original color and five complimentary colors.



2624524



3352616



2624552



1708819



10066329



1710618



# Same Dimension

The Same Dimension uses a secret algorithm to generate beautiful new colors.



2624524



3344392



2628108



1315346



5505024



13893632



# Inverse Universe

The Inverse Universe completely reimagines the original color for something new.



796712



537395



793128



1184788



21588

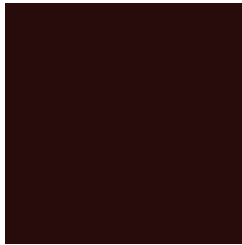


54484



# Previews

## White Background



This preview shows how the Decimal color 2624524 looks on a white background.

## Color Contrast Check

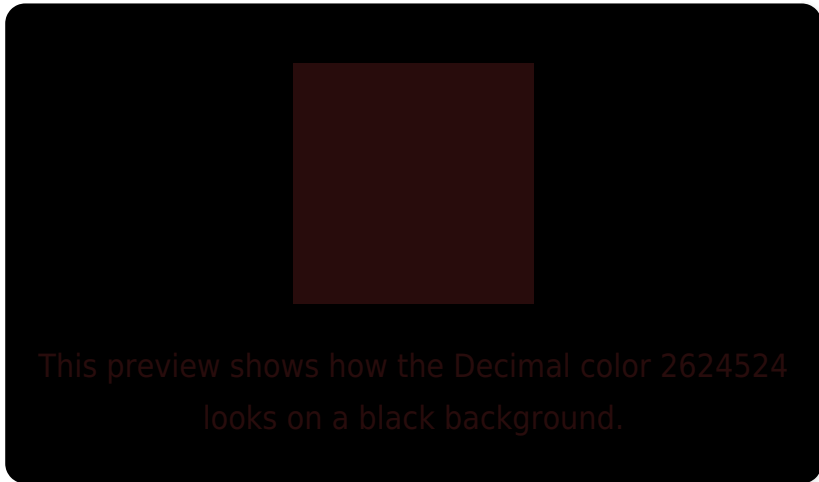
Large Text (above 18pt) WCAG AA ✓ Pass

Any Text WCAG AA ✓ Pass

Large Text (above 18pt) WCAG AAA ✓ Pass

Any Text WCAG AAA ✓ Pass

# Black Background



## Color Contrast Check

Large Text (above 18pt) WCAG AA × Fail

Any Text WCAG AA × Fail

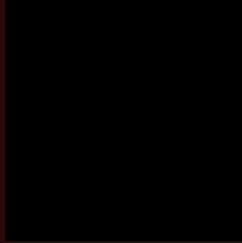
Large Text (above 18pt) WCAG AAA × Fail

Any Text WCAG AAA × Fail

If you want to check with other color combinations, try the [Color Contrast Checker](#).



## Decimal 2624524 Background



This preview shows how black text looks on a background with the Decimal color 2624524.



This preview shows how white text looks on a background with the Decimal color 2624524.

# Color Blindness Simulation

Color vision deficiency is a very complex topic, and I could not describe the different causes any better than Wikipedia does, so if you want to learn more, you should check out their [article about color blindness](#).

## Dichromacy



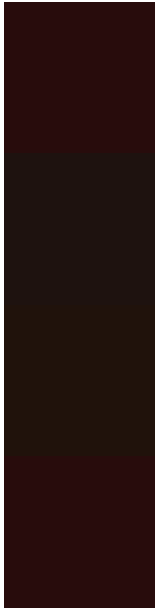
**Original Color**  
2624524

**Protanopia**  
1578512

**Deuteranopia**  
1840394



# Trichromacy



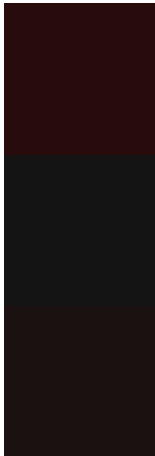
**Original Color**  
2624524

**Protanomaly**  
1970703

**Deuteranomaly**  
2101771

**Tritanomaly**  
2624524

# Monochromacy



**Original Color**  
2624524

**Achromatopsia**  
1315860

**Achromatomaly**  
1773841

# CSS Examples

## Text

The CSS property to change the color of the text to Decimal 2624524 is called "color". The color property can be set on classes, ids or directly on the HTML element.

This example shows how text in the color #280C0C looks like.

```
.text, #text, p{  
    color:#280C0C  
}
```

If you want to add a text shadow in that color use the text-shadow property, you can generate a text shadow directly with our [CSS Text Shadow Generator](#).

Here you see how black text with a 4 pixel #280C0C colored shadow looks like.

```
.shadow{ text-shadow: 4px 4px 2px #280C0C }
}
```

## Border

The CSS property to change the border of an element to Decimal 2624524 is called "border". The border property can be set on classes, ids or directly on the HTML element.

This example shows the color as border, it can be applied via the CSS property "border" or "border-color".

```
.border, #border, table{ border:4px solid #280C0C }
}
```

If only the border color should be changed use the property `border-color`.

```
.border{ border-color:#280C0C }
```

If you want to add a box shadow in that color use:

Here you see how a box with a 4 pixel #280C0C colored shadow looks like.

```
.boxshadow{ -moz-box-shadow:4px 4px 4px  
4px #280C0C; -webkit-box-shadow:4px 4px  
4px 4px #280C0C; box-shadow:4px 4px 4px  
4px #280C0C }
```

# Background

The CSS property to change the background color of an element to Decimal 2624524 is called "background". The background property can be set on classes, ids or directly on the HTML element.

```
.background, #background, body{  
background:#280C0C }
```

If only the background color should be changed can be used:

```
.background{ background-color:#280C0C }
```

This example shows the color as background, it is applied via the CSS property "background".

To optimize and compress your CSS code, you can use our [online CSS compressor and optimizer](#) based on csstidy. If you want to create a linear or radial gradient as background or border, check our [CSS Gradient Generator](#).



# Hey! You found this booklet interesting? Support Converting Colors with the new Membership Option!

The pro membership hides all ads, plus gives you double the colors in the color bucket, and more awesome pro features!

**[Learn more, Memberships starting at \\$2.50/m!](#)**

**Follow me  
on Twitter!**

@ConvertingColor