

Converting Colors

Decimal(2759433)

Have a look what the booklet for
Decimal(2759433) contains.

Decimal(2759433)	3
<i>Conversions</i>	4
<i>Details</i>	6
<i>Harmonies</i>	11
<i>Previews</i>	23
<i>Color Blindness Simulation</i>	26
<i>CSS Examples</i>	29

Color

Decimal(2759433)

Conversions

Conversions Part 1

Format	Color
Hex	2A1B09
RGB	42, 27, 9
RGB Percent	16%, 11%, 4%
CMY	0.8353, 0.8941, 0.9647
CMYK	0.00, 0.36, 0.79, 0.84
HSL	33°, 65%, 10%
HSV	33°, 79%, 16%
XYZ	1.3961, 1.2958, 0.4350
YIQ	29.4330, 14.7180, -2.4180

Conversions

Conversions Part 2

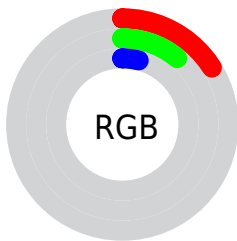
Format	Color
R_{YB}	37, 42, 9
Decimal	2759433
CIE _{Lab}	11.25, 5.01, 13.17
CIE _{LCh}	11, 14.089, 69.171
Yxy	1.2958, 0.4465, 0.4144
Android (android.graphics.Color)	4280949513 (0xFF2A1B09)
YUV	29.4330, -10.0735, 11.0213
Hunter-Lab	11.3835, 1.9705, 5.7028

Details

The Decimal color **2759433** is a dark color, and the websafe version is hex **333333**. A complement of this color would be **596010**, and the grayscale version is **1973790**.

A 20% lighter version of the original color is **5785141**, and **0** is the 20% darker color. If you saturate the color by 10%, you get **2758917**, and if you desaturate by 10%, it is **2759949**.

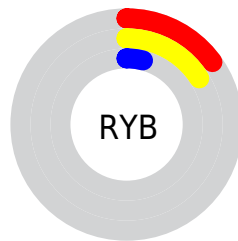
Distribution



Red (16%)

Green (11%)

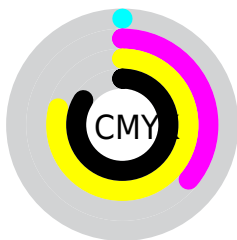
Blue (4%)



Red (15%)

Yellow (16%)

Blue (4%)

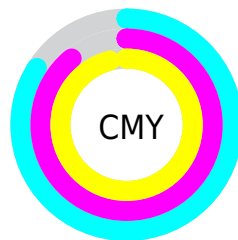


Cyan (0%)

Magenta (36%)

Yellow (79%)

Black (84%)



Cyan (84%)

Magenta (89%)

Yellow (96%)

Brightness & Saturation Gradients

These gradients show how the Decimal color 2759433 changes by changing the brightness by 10 percent. The first figure shows a shift by +10% for each color and the second figure -10%.

Similar to the brightness gradients but the following saturation gradients show a change of the Decimal color 2759433 by changing the saturation by 10% instead.

 2759433

 2759433

 16777193

 1179648

 5785141

 0

 7429708

 9139812

 10915965

 12692375

 14534322

 16442061

 2759433

 2759433

■ 2758917

■ 2759949

■ 2758401

■ 2760465

■ 2758400

■ 2760982

■ 2761498

■ 2762014

■ 2762274

■ 2762790

■ 2763307

■ 2763823

Harmonies

Analogous

The Analogous color harmony consists of three colors that are next to each other on the color wheel.



3086354



2759433



2235911

Triad

The Triadic color harmony groups three colors that are evenly spaced from another and form a triangle on the color wheel.



2759433



8993



2300461

Complementary

The Complementary color scheme is a pair of colors which are on the opposite of each other on the color wheel.



2759433



596010

Split Complementary

Split-complementary colors differ from the complementary color scheme. The scheme consists of three colors, the original color and two neighbors of the complement color.



1318449



2759433



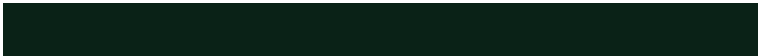
8746

Square

The Square scheme is like the rectangle color scheme, but the four colors are evenly spaced on the color wheel.



2759433



664087



74032



2889509

Rectangle

The Rectangle color scheme consists of four colors that form a rectangle on the color wheel.



2759433



1777674



74032



1973295

Sweetspot

The Sweet Spot groups the original color and five complimentary colors.



2759433



3551273



2754840



1841172



10263708



1842204

Same Dimension

The Same Dimension uses a secret algorithm to generate beautiful new colors.



2759433



3546883



2697737



1315602



5516800



13923072

Inverse Universe

The Inverse Universe completely reimagines the original color for something new.



596010



203318



657706



1184532



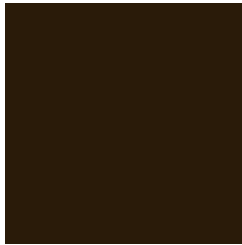
9812



24788

Previews

White Background



This preview shows how the Decimal color 2759433 looks on a white background.

Color Contrast Check

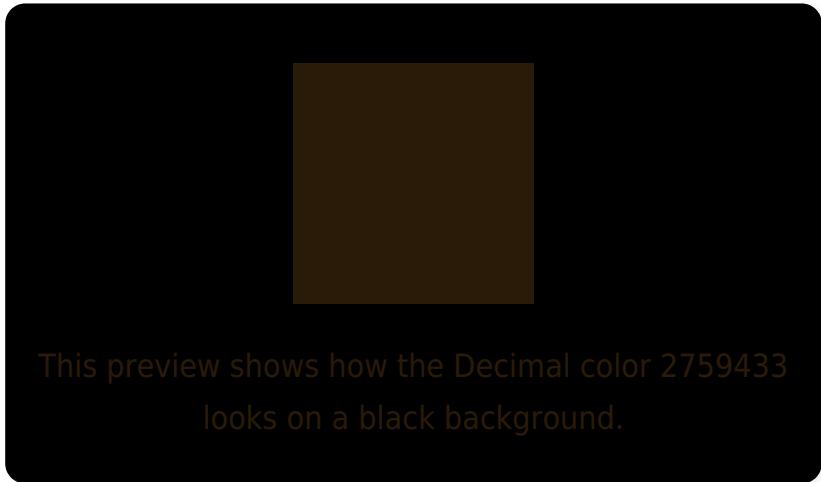
Large Text (above 18pt) WCAG AA ✓ Pass

Any Text WCAG AA ✓ Pass

Large Text (above 18pt) WCAG AAA ✓ Pass

Any Text WCAG AAA ✓ Pass

Black Background



Color Contrast Check

Large Text (above 18pt) WCAG AA × Fail

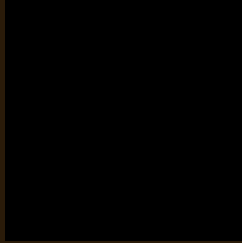
Any Text WCAG AA × Fail

Large Text (above 18pt) WCAG AAA × Fail

Any Text WCAG AAA × Fail

If you want to check with other color combinations, try the [Color Contrast Checker](#).

Decimal 2759433 Background



This preview shows how black text looks on a background with the Decimal color 2759433.



This preview shows how white text looks on a background with the Decimal color 2759433.

Color Blindness Simulation

Color vision deficiency is a very complex topic, and I could not describe the different causes any better than Wikipedia does, so if you want to learn more, you should check out their [article about color blindness](#).

Dichromacy



Original Color
2759433

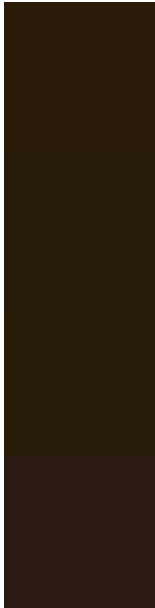
Protanopia
2235914

Deuteranopia
2497800



Tritanopia
2824475

Trichromacy



Original Color
2759433

Protanomaly
2432266

Deuteranomaly
2563080

Tritanomaly
2824724

Monochromacy



Original Color
2759433

Achromatopsia
1907997

Achromatomaly
2235414

CSS Examples

Text

The CSS property to change the color of the text to Decimal 2759433 is called "color". The color property can be set on classes, ids or directly on the HTML element.

This example shows how text in the color #2A1B09 looks like.

```
.text, #text, p{  
    color:#2A1B09  
}
```

If you want to add a text shadow in that color use the text-shadow property, you can generate a text shadow directly with our [CSS Text Shadow Generator](#).

Here you see how black text with a 4 pixel #2A1B09 colored shadow looks like.

```
.shadow{ text-shadow: 4px 4px 2px #2A1B09
}
```

Border

The CSS property to change the border of an element to Decimal 2759433 is called "border". The border property can be set on classes, ids or directly on the HTML element.

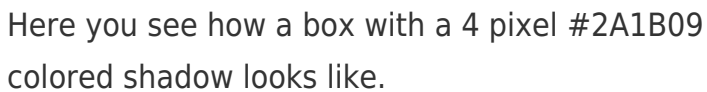
This example shows the color as border, it can be applied via the CSS property "border" or "border-color".

```
.border, #border, table{ border:4px solid
#2A1B09 }
```

If only the border color should be changed use the property `border-color`.

```
.border{ border-color:#2A1B09 }
```

If you want to add a box shadow in that color use:



Here you see how a box with a 4 pixel #2A1B09 colored shadow looks like.

```
.boxshadow{ -moz-box-shadow:4px 4px 4px  
4px #2A1B09; -webkit-box-shadow:4px 4px  
4px 4px #2A1B09; box-shadow:4px 4px 4px  
4px #2A1B09 }
```

Background

The CSS property to change the background color of an element to Decimal 2759433 is called "background". The background property can be set on classes, ids or directly on the HTML element.

```
.background, #background, body{  
background:#2A1B09 }
```

If only the background color should be changed can be used:

```
.background{ background-color:#2A1B09 }
```

This example shows the color as background, it is applied via the CSS property "background".

To optimize and compress your CSS code, you can use our [online CSS compressor and optimizer](#) based on csstidy. If you want to create a linear or radial gradient as background or border, check our [CSS Gradient Generator](#).

Hey! You found this booklet interesting? Support Converting Colors with the new Membership Option!

The pro membership hides all ads, plus gives you double the colors in the color bucket, and more awesome pro features!

[Learn more, Memberships starting at \\$2.50/m!](#)

**Follow me
on Twitter!**

@ConvertingColor