

Converting Colors

Decimal(2955024)

Have a look what the booklet for
Decimal(2955024) contains.

Decimal(2955024)	3
<i>Conversions</i>	4
<i>Details</i>	6
<i>Harmonies</i>	11
<i>Previews</i>	23
<i>Color Blindness Simulation</i>	26
<i>CSS Examples</i>	29

Color

Decimal(2955024)

Conversions

Conversions Part 1

Format	Color
Hex	2D1710
RGB	45, 23, 16
RGB Percent	18%, 9%, 6%
CMY	0.8235, 0.9098, 0.9373
CMYK	0.00, 0.49, 0.64, 0.82
HSL	14°, 48%, 12%
HSV	14°, 64%, 18%
XYZ	1.4821, 1.2081, 0.6453
YIQ	28.7800, 15.3590, 2.4870

Conversions

Conversions Part 2

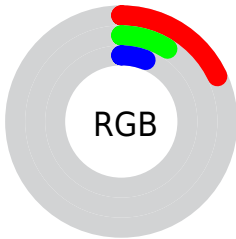
Format	Color
R_{YB}	45, 25, 16
Decimal	2955024
CIE Lab	10.62, 10.19, 9.08
CIE LCh	11, 13.644, 41.695
Yxy	1.2081, 0.4443, 0.3622
Android (android.graphics.Color)	4281145104 (0xFF2D1710)
YUV	28.7800, -6.3005, 14.2249
Hunter-Lab	10.9913, 4.8348, 4.2131

Details

The Decimal color **2955024** is a dark color, and the websafe version is hex **330000**. A complement of this color would be **1058349**, and the grayscale version is **1907997**.

A 20% lighter version of the original color is **6046266**, and **0** is the 20% darker color. If you saturate the color by 10%, you get **2954252**, and if you desaturate by 10%, it is **2955797**.

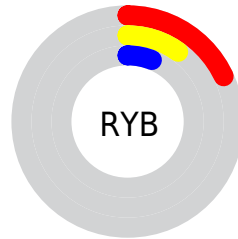
Distribution



 Red (18%)

 Green (9%)

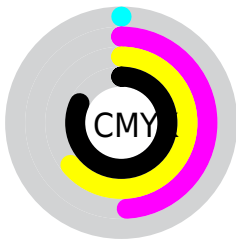
 Blue (6%)



 Red (18%)

 Yellow (10%)

 Blue (6%)

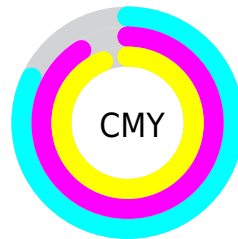


 Cyan (0%)

 Magenta (49%)

 Yellow (64%)

 Black (82%)



 Cyan (82%)

 Magenta (91%)

 Yellow (94%)

Brightness & Saturation Gradients

These gradients show how the Decimal color 2955024 changes by changing the brightness by 10 percent. The first figure shows a shift by +10% for each color and the second figure -10%.

Similar to the brightness gradients but the following saturation gradients show a change of the Decimal color 2955024 by changing the saturation by 10% instead.

■ 2955024

■ 2955024

■ 16775920

■ 1572864

■ 6046266

■ 0

■ 7690577

■ 9400938

■ 11177091

■ 13018781

■ 14860728

■ 16768467

■ 2955024

■ 2955024

■ 2954252

■ 2955797

■ 2953223

■ 2956825

■ 2952451

■ 2957598

■ 2951936

■ 2958626

■ 2959399

■ 2960171

■ 2961200

■ 2961972

■ 2963001

Harmonies

Analogous

The Analogous color harmony consists of three colors that are next to each other on the color wheel.



3020057



2955024



2628103

Triad

The Triadic color harmony groups three colors that are evenly spaced from another and form a triangle on the color wheel.



2955024



532759



1383471

Complementary

The Complementary color scheme is a pair of colors which are on the opposite of each other on the color wheel.



2955024



1058349

Split Complementary

Split-complementary colors differ from the complementary color scheme. The scheme consists of three colors, the original color and two neighbors of the complement color.



204590



2955024



8736

Square

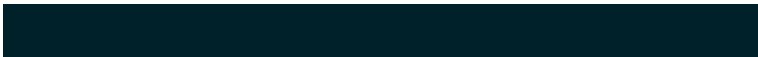
The Square scheme is like the rectangle color scheme, but the four colors are evenly spaced on the color wheel.



2955024



1384461



8489



2234667

Rectangle

The Rectangle color scheme consists of four colors that form a rectangle on the color wheel.



2955024



2300933



8489



990511

Sweetspot

The Sweet Spot groups the original color and five complimentary colors.



2955024



3879472



2953254



2038040



10395294



2039583

Same Dimension

The Same Dimension uses a secret algorithm to generate beautiful new colors.



2955024



3872781



2958608



1512725



5707008



14038016

Inverse Universe

The Inverse Universe completely reimagines the original color for something new.



1058349



864315



1054765



1381911



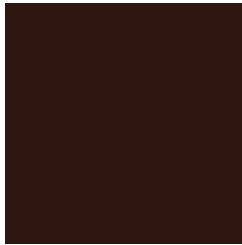
16983



41686

Previews

White Background



This preview shows how the Decimal color 2955024 looks on a white background.

Color Contrast Check

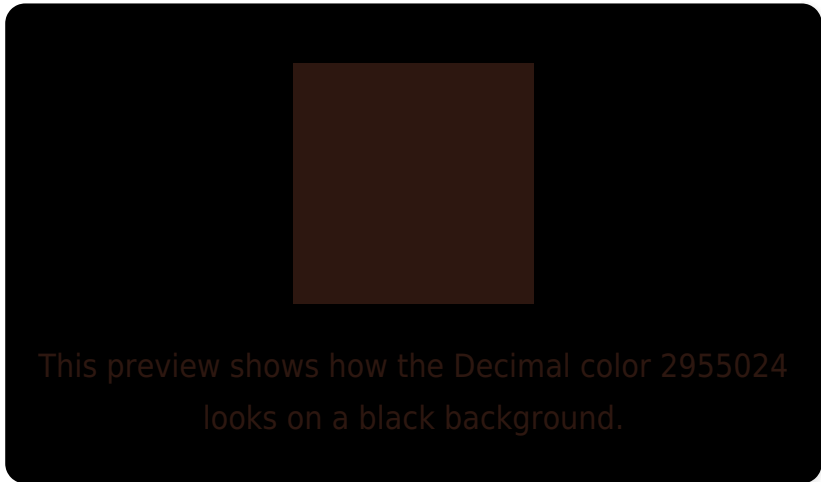
Large Text (above 18pt) WCAG AA ✓ Pass

Any Text WCAG AA ✓ Pass

Large Text (above 18pt) WCAG AAA ✓ Pass

Any Text WCAG AAA ✓ Pass

Black Background



Color Contrast Check

Large Text (above 18pt) WCAG AA × Fail

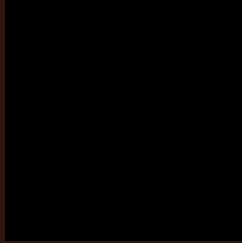
Any Text WCAG AA × Fail

Large Text (above 18pt) WCAG AAA × Fail

Any Text WCAG AAA × Fail

If you want to check with other color combinations, try the [Color Contrast Checker](#).

Decimal 2955024 Background



This preview shows how black text looks on a background with the Decimal color 2955024.



This preview shows how white text looks on a background with the Decimal color 2955024.

Color Blindness Simulation

Color vision deficiency is a very complex topic, and I could not describe the different causes any better than Wikipedia does, so if you want to learn more, you should check out their [article about color blindness](#).

Dichromacy



Original Color
2955024

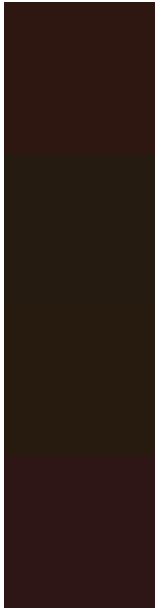
Protanopia
2104594

Deuteranopia
2366479



Tritanopia
2954776

Trichromacy



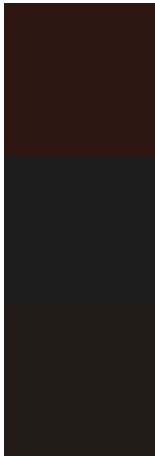
Original Color
2955024

Protanomaly
2431761

Deuteranomaly
2562575

Tritanomaly
2954773

Monochromacy



Original Color
2955024

Achromatopsia
1907997

Achromatomaly
2300696

CSS Examples

Text

The CSS property to change the color of the text to Decimal 2955024 is called "color". The color property can be set on classes, ids or directly on the HTML element.

This example shows how text in the color #2D1710 looks like.

```
.text, #text, p{  
    color:#2D1710  
}
```

If you want to add a text shadow in that color use the text-shadow property, you can generate a text shadow directly with our [CSS Text Shadow Generator](#).

Here you see how black text with a 4 pixel #2D1710 colored shadow looks like.

```
.shadow{ text-shadow: 4px 4px 2px #2D1710
}
```

Border

The CSS property to change the border of an element to Decimal 2955024 is called "border". The border property can be set on classes, ids or directly on the HTML element.

This example shows the color as border, it can be applied via the CSS property "border" or "border-color".

```
.border, #border, table{ border:4px solid
#2D1710 }
```

If only the border color should be changed use the property `border-color`.

```
.border{ border-color:#2D1710 }
```

If you want to add a box shadow in that color use:

Here you see how a box with a 4 pixel #2D1710 colored shadow looks like.

```
.boxshadow{ -moz-box-shadow:4px 4px 4px  
4px #2D1710; -webkit-box-shadow:4px 4px  
4px 4px #2D1710; box-shadow:4px 4px 4px  
4px #2D1710 }
```

Background

The CSS property to change the background color of an element to Decimal 2955024 is called "background". The background property can be set on classes, ids or directly on the HTML element.

```
.background, #background, body{  
background:#2D1710 }
```

If only the background color should be changed can be used:

```
.background{ background-color:#2D1710 }
```

This example shows the color as background, it is applied via the CSS property "background".

To optimize and compress your CSS code, you can use our [online CSS compressor and optimizer](#) based on csstidy. If you want to create a linear or radial gradient as background or border, check our [CSS Gradient Generator](#).

Hey! You found this booklet interesting? Support Converting Colors with the new Membership Option!

The pro membership hides all ads, plus gives you double the colors in the color bucket, and more awesome pro features!

[Learn more, Memberships starting at \\$2.50/m!](#)

**Follow me
on Twitter!**

@ConvertingColor