

# Converting Colors

Decimal(3021073)

Have a look what the booklet for  
Decimal(3021073) contains.

<b>Decimal(3021073)</b> .....	3
<i><b>Conversions</b></i> .....	4
<i><b>Details</b></i> .....	6
<i><b>Harmonies</b></i> .....	11
<i><b>Previews</b></i> .....	23
<i><b>Color Blindness Simulation</b></i> .....	26
<i><b>CSS Examples</b></i> .....	29

# Color

**Decimal(3021073)**

# Conversions

## Conversions Part 1

Format	Color
Hex	2E1911
RGB	46, 25, 17
RGB Percent	18%, 10%, 7%
CMY	0.8196, 0.9020, 0.9333
CMYK	0.00, 0.46, 0.63, 0.82
HSL	17°, 46%, 12%
HSV	17°, 63%, 18%
XYZ	1.5755, 1.3166, 0.7014
YIQ	30.3670, 15.0840, 1.9640

# Conversions

## Conversions Part 2

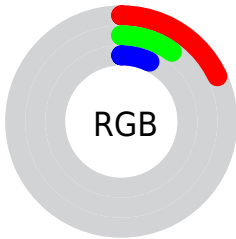
<b>Format</b>	<b>Color</b>
<b>RYB</b>	46, 28, 17
Decimal	3021073
CIELab	11.39, 9.42, 9.61
CIELCh	11, 13.457, 45.556
Yxy	1.3166, 0.4384, 0.3664
Android (android.graphics.Color)	4281211153 (0xFF2E1911)
YUV	30.3670, -6.5899, 13.7101
Hunter-Lab	11.4742, 4.4299, 4.4076

# Details

The Decimal color **3021073** is a dark color, and the websafe version is hex **330000**. A complement of this color would be **1123886**, and the grayscale version is **1973790**.

A 20% lighter version of the original color is **6112315**, and **0** is the 20% darker color. If you saturate the color by 10%, you get **3020300**, and if you desaturate by 10%, it is **3021846**.

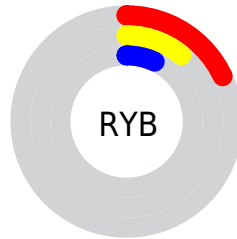
# Distribution



Red (18%)

Green (10%)

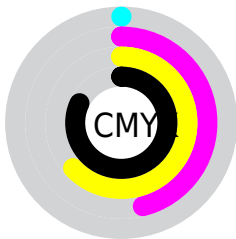
Blue (7%)



Red (18%)

Yellow (11%)

Blue (7%)

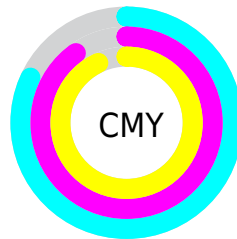


Cyan (0%)

Magenta (46%)

Yellow (63%)

Black (82%)



Cyan (82%)

Magenta (90%)

Yellow (93%)

# Brightness & Saturation Gradients

These gradients show how the Decimal color 3021073 changes by changing the brightness by 10 percent. The first figure shows a shift by +10% for each color and the second figure -10%.

Similar to the brightness gradients but the following saturation gradients show a change of the Decimal color 3021073 by changing the saturation by 10% instead.



■ 3021073

■ 3021073

■ 16776433

■ 1638400

■ 6112315

■ 0

■ 7756882

■ 9532523

■ 11243140

■ 13084830

■ 14927033

■ 16769236

■ 3021073

■ 3021073

■ 3020300

■ 3021846

■ 3019272

■ 3022874

■ 3018499

■ 3023647

■ 3017984

■ 3024419

■ 3025448

■ 3026221

■ 3026993

■ 3028022

■ 3028794

# Harmonies

## Analogous

The Analogous color harmony consists of three colors that are next to each other on the color wheel.



3151642



3021073



2628618

# Triad

The Triadic color harmony groups three colors that are evenly spaced from another and form a triangle on the color wheel.



3021073



598809



1580592

# Complementary

The Complementary color scheme is a pair of colors which are on the opposite of each other on the color wheel.



3021073



1123886

# Split Complementary

Split-complementary colors differ from the complementary color scheme. The scheme consists of three colors, the original color and two neighbors of the complement color.



466992



3021073



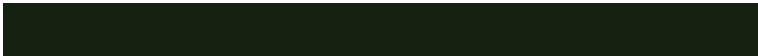
8995

# Square

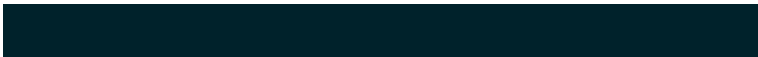
The Square scheme is like the rectangle color scheme, but the four colors are evenly spaced on the color wheel.



3021073



1384721



8747



2431531

# Rectangle

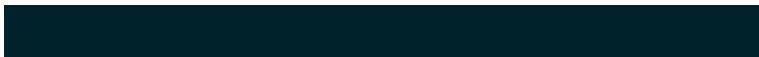
The Rectangle color scheme consists of four colors that form a rectangle on the color wheel.



3021073



2301449



8747



1253168



# Sweetspot

The Sweet Spot groups the original color and five complimentary colors.



3021073



3879728



3019046



2038296



10395294



2039583



# Same Dimension

The Same Dimension uses a secret algorithm to generate beautiful new colors.



3021073



3873294



3024657



1512725



5707776



14039808



# Inverse Universe

The Inverse Universe completely reimagines the original color for something new.



1123886



929339



1120302



1381911



16215

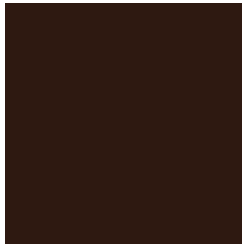


39894



# Previews

## White Background



This preview shows how the Decimal color 3021073 looks on a white background.

## Color Contrast Check

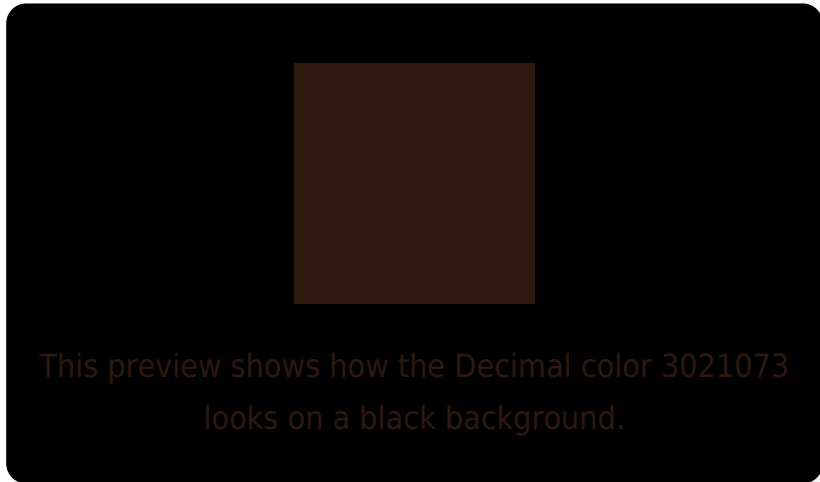
Large Text (above 18pt) WCAG AA ✓ Pass

Any Text WCAG AA ✓ Pass

Large Text (above 18pt) WCAG AAA ✓ Pass

Any Text WCAG AAA ✓ Pass

# Black Background



## Color Contrast Check

Large Text (above 18pt) WCAG AA × Fail

Any Text WCAG AA × Fail

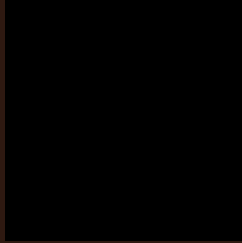
Large Text (above 18pt) WCAG AAA × Fail

Any Text WCAG AAA × Fail

If you want to check with other color combinations, try the [Color Contrast Checker](#).



## Decimal 3021073 Background



This preview shows how black text looks on a background with the Decimal color 3021073.

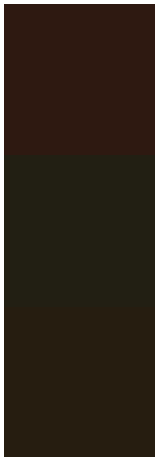


This preview shows how white text looks on a background with the Decimal color 3021073.

# Color Blindness Simulation

Color vision deficiency is a very complex topic, and I could not describe the different causes any better than Wikipedia does, so if you want to learn more, you should check out their [article about color blindness](#).

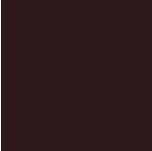
## Dichromacy



**Original Color**  
3021073

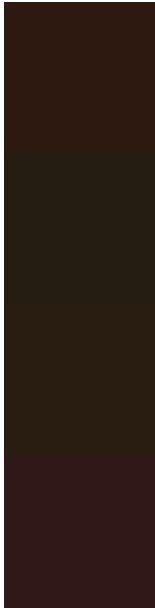
**Protanopia**  
2236179

**Deuteranopia**  
2497808



**Tritanopia**  
3086362

# Trichromacy



**Original Color**  
3021073

**Protanomaly**  
2497810

**Deuteranomaly**  
2694160

**Tritanomaly**  
3086359

# Monochromacy



**Original Color**  
3021073

**Achromatopsia**  
1973790

**Achromatomaly**  
2366489

# CSS Examples

## Text

The CSS property to change the color of the text to Decimal 3021073 is called "color". The color property can be set on classes, ids or directly on the HTML element.

This example shows how text in the color #2E1911 looks like.

```
.text, #text, p{  
    color:#2E1911  
}
```

If you want to add a text shadow in that color use the text-shadow property, you can generate a text shadow directly with our [CSS Text Shadow Generator](#).

Here you see how black text with a 4 pixel #2E1911 colored shadow looks like.

```
.shadow{ text-shadow: 4px 4px 2px #2E1911
}
```

## Border

The CSS property to change the border of an element to Decimal 3021073 is called "border". The border property can be set on classes, ids or directly on the HTML element.

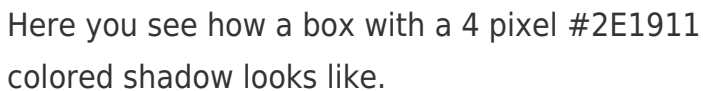
This example shows the color as border, it can be applied via the CSS property "border" or "border-color".

```
.border, #border, table{ border:4px solid
#2E1911 }
```

If only the border color should be changed use the property `border-color`.

```
.border{ border-color:#2E1911 }
```

If you want to add a box shadow in that color use:



Here you see how a box with a 4 pixel #2E1911 colored shadow looks like.

```
.boxshadow{ -moz-box-shadow:4px 4px 4px  
4px #2E1911; -webkit-box-shadow:4px 4px  
4px 4px #2E1911; box-shadow:4px 4px 4px  
4px #2E1911 }
```

# Background

The CSS property to change the background color of an element to Decimal 3021073 is called "background". The background property can be set on classes, ids or directly on the HTML element.

```
.background, #background, body{  
background:#2E1911 }
```

If only the background color should be changed can be used:

```
.background{ background-color:#2E1911 }
```

This example shows the color as background, it is applied via the CSS property "background".

To optimize and compress your CSS code, you can use our [online CSS compressor and optimizer](#) based on csstidy. If you want to create a linear or radial gradient as background or border, check our [CSS Gradient Generator](#).



# Hey! You found this booklet interesting? Support Converting Colors with the new Membership Option!

The pro membership hides all ads, plus gives you double the colors in the color bucket, and more awesome pro features!

**[Learn more, Memberships starting at \\$2.50/m!](#)**

**Follow me  
on Twitter!**

@ConvertingColor