

Converting Colors

Decimal(3086609)

Have a look what the booklet for
Decimal(3086609) contains.

Decimal(3086609)	3
<i>Conversions</i>	4
<i>Details</i>	6
<i>Harmonies</i>	11
<i>Previews</i>	23
<i>Color Blindness Simulation</i>	26
<i>CSS Examples</i>	29

Color

Decimal(3086609)

Conversions

Conversions Part 1

Format	Color
Hex	2F1911
RGB	47, 25, 17
RGB Percent	18%, 10%, 7%
CMY	0.8157, 0.9020, 0.9333
CMYK	0.00, 0.47, 0.64, 0.82
HSL	16°, 47%, 13%
HSV	16°, 64%, 18%
XYZ	1.6211, 1.3401, 0.7035
YIQ	30.6660, 15.6800, 2.1760

Conversions

Conversions Part 2

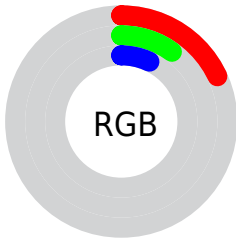
Format	Color
RYB	47, 28, 17
Decimal	3086609
CIELab	11.55, 9.94, 9.86
CIElCh	12, 13.999, 44.751
Yxy	1.3401, 0.4424, 0.3657
Android (android.graphics.Color)	4281276689 (0xFF2F1911)
YUV	30.6660, -6.7373, 14.3249
Hunter-Lab	11.5761, 4.7385, 4.5000

Details

The Decimal color **3086609** is a dark color, and the websafe version is hex **330000**. A complement of this color would be **1124143**, and the grayscale version is **2039583**.

A 20% lighter version of the original color is **6243387**, and **0** is the 20% darker color. If you saturate the color by 10%, you get **3085836**, and if you desaturate by 10%, it is **3087382**.

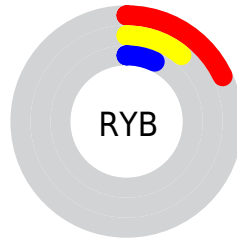
Distribution



Red (18%)

Green (10%)

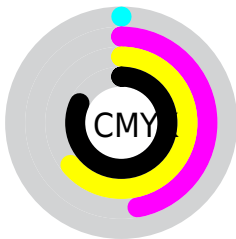
Blue (7%)



Red (18%)

Yellow (11%)

Blue (7%)

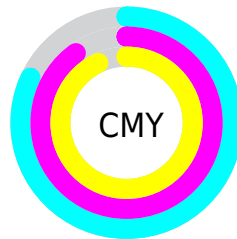


Cyan (0%)

Magenta (47%)

Yellow (64%)

Black (82%)



Cyan (82%)

Magenta (90%)

Yellow (93%)

Brightness & Saturation Gradients

These gradients show how the Decimal color 3086609 changes by changing the brightness by 10 percent. The first figure shows a shift by +10% for each color and the second figure -10%.

Similar to the brightness gradients but the following saturation gradients show a change of the Decimal color 3086609 by changing the saturation by 10% instead.

■ 3086609

■ 3086609

■ 16776433

■ 1703936

■ 6243387

■ 0

■ 7887954

■ 9598059

■ 11374212

■ 13150622

■ 15058105

■ 16769236

■ 3086609

■ 3086609

■ 3085836

■ 3087382

■ 3084808

■ 3088410

■ 3084035

■ 3089183

■ 3083520

■ 3090212

■ 3090985

■ 3092013

■ 3092786

■ 3093815

■ 3094587

Harmonies

Analogous

The Analogous color harmony consists of three colors that are next to each other on the color wheel.



3217178



3086609



2694153

Triad

The Triadic color harmony groups three colors that are evenly spaced from another and form a triangle on the color wheel.



3086609



533273



1580593

Complementary

The Complementary color scheme is a pair of colors which are on the opposite of each other on the color wheel.



3086609



1124143

Split Complementary

Split-complementary colors differ from the complementary color scheme. The scheme consists of three colors, the original color and two neighbors of the complement color.



336177



3086609



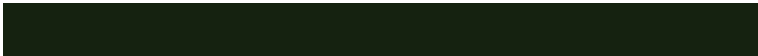
9251

Square

The Square scheme is like the rectangle color scheme, but the four colors are evenly spaced on the color wheel.



3086609



1384976



9004



2497068

Rectangle

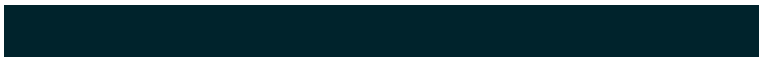
The Rectangle color scheme consists of four colors that form a rectangle on the color wheel.



3086609



2366984



9004



1187634

Sweetspot

The Sweet Spot groups the original color and five complimentary colors.



3086609



4011314



3084583



2038040



10395294



2039583

Same Dimension

The Same Dimension uses a secret algorithm to generate beautiful new colors.



3086609



4004622



3090449



1512725



5707520



14039296

Inverse Universe

The Inverse Universe completely reimagines the original color for something new.



1124143



930109



1120303



1381911



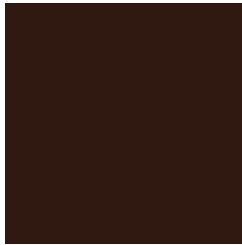
16471



40406

Previews

White Background



This preview shows how the Decimal color 3086609 looks on a white background.

Color Contrast Check

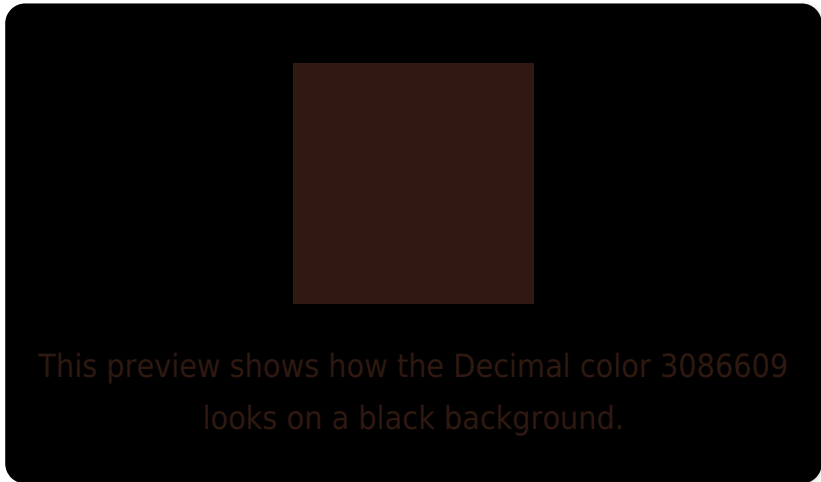
Large Text (above 18pt) WCAG AA ✓ Pass

Any Text WCAG AA ✓ Pass

Large Text (above 18pt) WCAG AAA ✓ Pass

Any Text WCAG AAA ✓ Pass

Black Background



Color Contrast Check

Large Text (above 18pt) WCAG AA × Fail

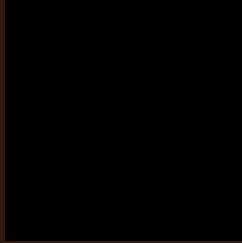
Any Text WCAG AA × Fail

Large Text (above 18pt) WCAG AAA × Fail

Any Text WCAG AAA × Fail

If you want to check with other color combinations, try the [Color Contrast Checker](#).

Decimal 3086609 Background



This preview shows how black text looks on a background with the Decimal color 3086609.

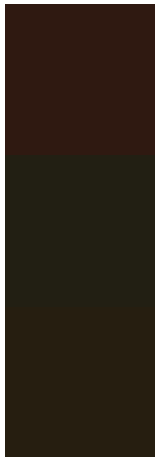


This preview shows how white text looks on a background with the Decimal color 3086609.

Color Blindness Simulation

Color vision deficiency is a very complex topic, and I could not describe the different causes any better than Wikipedia does, so if you want to learn more, you should check out their [article about color blindness](#).

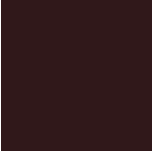
Dichromacy



Original Color
3086609

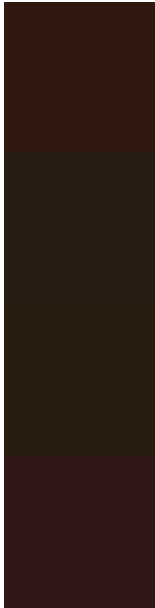
Protanopia
2236179

Deuteranopia
2498064



Tritanopia
3151898

Trichromacy



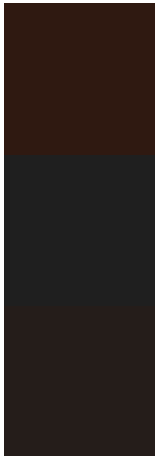
Original Color
3086609

Protanomaly
2563346

Deuteranomaly
2694160

Tritanomaly
3151895

Monochromacy



Original Color
3086609

Achromatopsia
2039583

Achromatomaly
2432282

CSS Examples

Text

The CSS property to change the color of the text to Decimal 3086609 is called "color". The color property can be set on classes, ids or directly on the HTML element.

This example shows how text in the color #2F1911 looks like.

```
.text, #text, p{  
  color:#2F1911  
}
```

If you want to add a text shadow in that color use the text-shadow property, you can generate a text shadow directly with our [CSS Text Shadow Generator](#).

Here you see how black text with a 4 pixel #2F1911 colored shadow looks like.

```
.shadow{ text-shadow: 4px 4px 2px #2F1911
}
```

Border

The CSS property to change the border of an element to Decimal 3086609 is called "border". The border property can be set on classes, ids or directly on the HTML element.

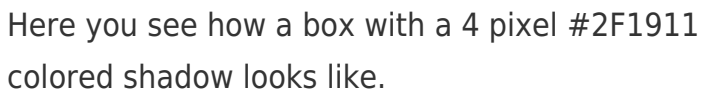
This example shows the color as border, it can be applied via the CSS property "border" or "border-color".

```
.border, #border, table{ border:4px solid
#2F1911 }
```

If only the border color should be changed use the property `border-color`.

```
.border{ border-color:#2F1911 }
```

If you want to add a box shadow in that color use:



Here you see how a box with a 4 pixel #2F1911 colored shadow looks like.

```
.boxshadow{ -moz-box-shadow:4px 4px 4px  
4px #2F1911; -webkit-box-shadow:4px 4px  
4px 4px #2F1911; box-shadow:4px 4px 4px  
4px #2F1911 }
```

Background

The CSS property to change the background color of an element to Decimal 3086609 is called "background". The background property can be set on classes, ids or directly on the HTML element.

```
.background, #background, body{  
background:#2F1911 }
```

If only the background color should be changed can be used:

```
.background{ background-color:#2F1911 }
```

This example shows the color as background, it is applied via the CSS property "background".

To optimize and compress your CSS code, you can use our [online CSS compressor and optimizer](#) based on csstidy. If you want to create a linear or radial gradient as background or border, check our [CSS Gradient Generator](#).

Hey! You found this booklet interesting? Support Converting Colors with the new Membership Option!

The pro membership hides all ads, plus gives you double the colors in the color bucket, and more awesome pro features!

[Learn more, Memberships starting at \\$2.50/m!](#)

**Follow me
on Twitter!**

@ConvertingColor