

Converting Colors

Decimal(3215372)

Have a look what the booklet for
Decimal(3215372) contains.

Decimal(3215372)	3
<i>Conversions</i>	4
<i>Details</i>	6
<i>Harmonies</i>	11
<i>Previews</i>	23
<i>Color Blindness Simulation</i>	26
<i>CSS Examples</i>	29

Color

Decimal(3215372)

Conversions

Conversions Part 1

Format	Color
Hex	31100C
RGB	49, 16, 12
RGB Percent	19%, 6%, 5%
CMY	0.8078, 0.9373, 0.9529
CMYK	0.00, 0.67, 0.76, 0.81
HSL	6°, 61%, 12%
HSV	6°, 76%, 19%
XYZ	1.5183, 1.0501, 0.4705
YIQ	25.4110, 20.9520, 5.7520

Conversions

Conversions Part 2

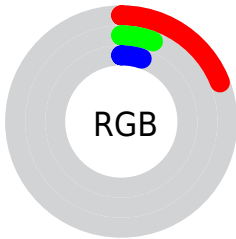
Format	Color
R_{YB}	49, 16, 12
Decimal	3215372
CIE Lab	9.40, 16.43, 9.48
CIE LCh	9, 18.971, 29.983
Yxy	1.0501, 0.4996, 0.3456
Android (android.graphics.Color)	4281405452 (0xFF31100C)
YUV	25.4110, -6.6116, 20.6876
Hunter-Lab	10.2474, 8.5139, 4.4510

Details

The Decimal color **3215372** is a dark color, and the websafe version is hex **330000**. A complement of this color would be **798001**, and the grayscale version is **1644825**.

A 20% lighter version of the original color is **6437687**, and **0** is the 20% darker color. If you saturate the color by 10%, you get **3214343**, and if you desaturate by 10%, it is **3216401**.

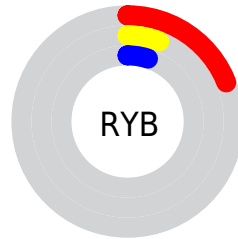
Distribution



Red (19%)

Green (6%)

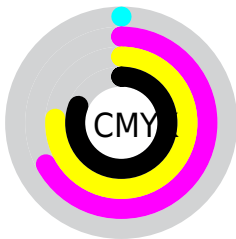
Blue (5%)



Red (19%)

Yellow (6%)

Blue (5%)

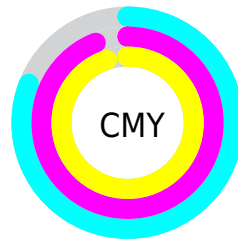


Cyan (0%)

Magenta (67%)

Yellow (76%)

Black (81%)



Cyan (81%)

Magenta (94%)

Yellow (95%)

Brightness & Saturation Gradients

These gradients show how the Decimal color 3215372 changes by changing the brightness by 10 percent. The first figure shows a shift by +10% for each color and the second figure -10%.

Similar to the brightness gradients but the following saturation gradients show a change of the Decimal color 3215372 by changing the saturation by 10% instead.

■ 3215372

■ 3215372

■ 16773868

■ 1769473

■ 6437687

■ 0

■ 8082254

■ 9857894

■ 11633791

■ 13475737

■ 15383220

■ 16766415

■ 3215372

■ 3215372

■ 3214343

■ 3216401

■ 3213058

■ 3217686

■ 3212544

■ 3218715

■ 3219744

■ 3221029

■ 3222057

■ 3223342

■ 3224371

■ 3225400

Harmonies

Analogous

The Analogous color harmony consists of three colors that are next to each other on the color wheel.



3214875



3215372



2888960

Triad

The Triadic color harmony groups three colors that are evenly spaced from another and form a triangle on the color wheel.



3215372



139274



7220

Complementary

The Complementary color scheme is a pair of colors which are on the opposite of each other on the color wheel.



3215372



798001

Split Complementary

Split-complementary colors differ from the complementary color scheme. The scheme consists of three colors, the original color and two neighbors of the complement color.



7984



3215372



8474

Square

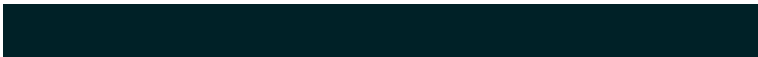
The Square scheme is like the rectangle color scheme, but the four colors are evenly spaced on the color wheel.



3215372



1514752



8487



1709872

Rectangle

The Rectangle color scheme consists of four colors that form a rectangle on the color wheel.



3215372



2496512



8487



7475

Sweetspot

The Sweet Spot groups the original color and five complimentary colors.



3215372



4207409



3214381



2169112



10592673



2171169

Same Dimension

The Same Dimension uses a secret algorithm to generate beautiful new colors.



3215372



4197382



3219980



1709847



5835264



14227200

Inverse Universe

The Inverse Universe completely reimagines the original color for something new.



798001



407872



793393



1513754



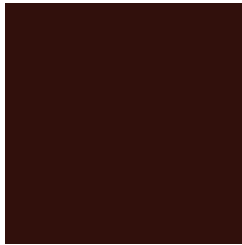
20569



49625

Previews

White Background



This preview shows how the Decimal color 3215372 looks on a white background.

Color Contrast Check

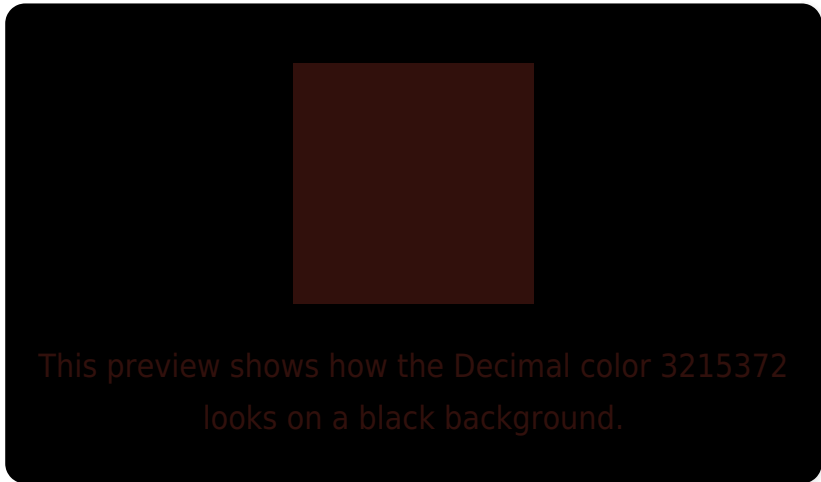
Large Text (above 18pt) WCAG AA ✓ Pass

Any Text WCAG AA ✓ Pass

Large Text (above 18pt) WCAG AAA ✓ Pass

Any Text WCAG AAA ✓ Pass

Black Background



Color Contrast Check

Large Text (above 18pt) WCAG AA × Fail

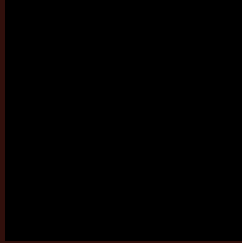
Any Text WCAG AA × Fail

Large Text (above 18pt) WCAG AAA × Fail

Any Text WCAG AAA × Fail

If you want to check with other color combinations, try the [Color Contrast Checker](#).

Decimal 3215372 Background



This preview shows how black text looks on a background with the Decimal color 3215372.



This preview shows how white text looks on a background with the Decimal color 3215372.

Color Blindness Simulation

Color vision deficiency is a very complex topic, and I could not describe the different causes any better than Wikipedia does, so if you want to learn more, you should check out their [article about color blindness](#).

Dichromacy



Original Color
3215372

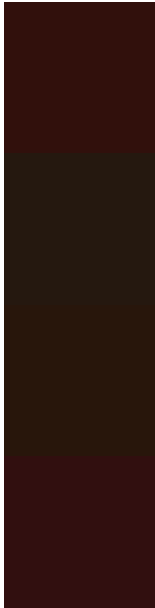
Protanopia
1973264

Deuteranopia
2300426



Tritanopia
3215120

Trichromacy



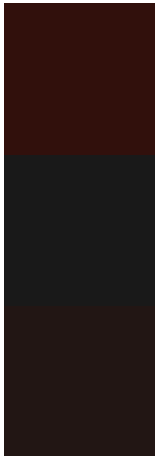
Original Color
3215372

Protanomaly
2430991

Deuteranomaly
2627083

Tritanomaly
3215119

Monochromacy



Original Color
3215372

Achromatopsia
1644825

Achromatomaly
2233876

CSS Examples

Text

The CSS property to change the color of the text to Decimal 3215372 is called "color". The color property can be set on classes, ids or directly on the HTML element.

This example shows how text in the color #31100C looks like.

```
.text, #text, p{  
    color:#31100C  
}
```

If you want to add a text shadow in that color use the text-shadow property, you can generate a text shadow directly with our [CSS Text Shadow Generator](#).

Here you see how black text with a 4 pixel #31100C colored shadow looks like.

```
.shadow{ text-shadow: 4px 4px 2px #31100C
}
```

Border

The CSS property to change the border of an element to Decimal 3215372 is called "border". The border property can be set on classes, ids or directly on the HTML element.

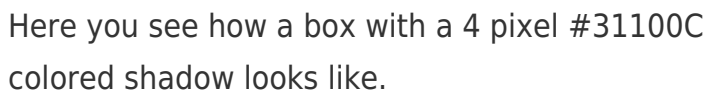
This example shows the color as border, it can be applied via the CSS property "border" or "border-color".

```
.border, #border, table{ border:4px solid
#31100C }
```

If only the border color should be changed use the property `border-color`.

```
.border{ border-color:#31100C }
```

If you want to add a box shadow in that color use:



Here you see how a box with a 4 pixel #31100C colored shadow looks like.

```
.boxshadow{ -moz-box-shadow:4px 4px 4px  
4px #31100C; -webkit-box-shadow:4px 4px  
4px 4px #31100C; box-shadow:4px 4px 4px  
4px #31100C }
```

Background

The CSS property to change the background color of an element to Decimal 3215372 is called "background". The background property can be set on classes, ids or directly on the HTML element.

```
.background, #background, body{  
background:#31100C }
```

If only the background color should be changed can be used:

```
.background{ background-color:#31100C }
```

This example shows the color as background, it is applied via the CSS property "background".

To optimize and compress your CSS code, you can use our [online CSS compressor and optimizer](#) based on csstidy. If you want to create a linear or radial gradient as background or border, check our [CSS Gradient Generator](#).

Hey! You found this booklet interesting? Support Converting Colors with the new Membership Option!

The pro membership hides all ads, plus gives you double the colors in the color bucket, and more awesome pro features!

[Learn more, Memberships starting at \\$2.50/m!](#)

**Follow me
on Twitter!**

@ConvertingColor