

Converting Colors

Decimal(3349801)

Have a look what the booklet for
Decimal(3349801) contains.

Decimal(3349801)	3
<i>Conversions</i>	4
<i>Details</i>	6
<i>Harmonies</i>	11
<i>Previews</i>	23
<i>Color Blindness Simulation</i>	26
<i>CSS Examples</i>	29

Color

Decimal(3349801)

Conversions

Conversions Part 1

Format	Color
Hex	331D29
RGB	51, 29, 41
RGB Percent	20%, 11%, 16%
CMY	0.8000, 0.8863, 0.8392
CMYK	0.00, 0.43, 0.20, 0.80
HSL	327°, 28%, 16%
HSV	327°, 43%, 20%
XYZ	2.2048, 1.7426, 2.3180
YIQ	36.9460, 9.2600, 8.3960

Conversions

Conversions Part 2

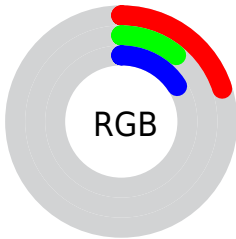
Format	Color
R_{YB}	51, 29, 41
Decimal	3349801
CIE _{Lab}	14.07, 12.97, -3.58
CIE _{LCh}	14, 13.454, 344.576
Yxy	1.7426, 0.3519, 0.2781
Android (android.graphics.Color)	4281539881 (0xFF331D29)
YUV	36.9460, 1.9986, 12.3254
Hunter-Lab	13.2009, 6.7120, -1.1703

Details

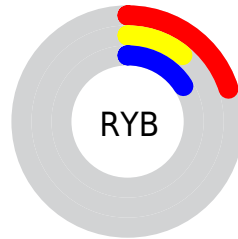
The Decimal color **3349801** is a dark color, and the websafe version is hex **333333**. A complement of this color would be **1913639**, and the grayscale version is **2434341**.

A 20% lighter version of the original color is **6441302**, and **0** is the 20% darker color. If you saturate the color by 10%, you get **3348519**, and if you desaturate by 10%, it is **3351083**.

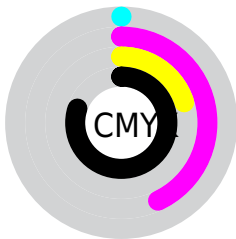
Distribution



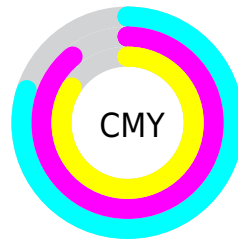
- Red (20%)
- Green (11%)
- Blue (16%)



- Red (20%)
- Yellow (11%)
- Blue (16%)



- Cyan (0%)
- Magenta (43%)
- Yellow (20%)
- Black (80%)



- Cyan (80%)
- Magenta (89%)
- Yellow (84%)

Brightness & Saturation Gradients

These gradients show how the Decimal color 3349801 changes by changing the brightness by 10 percent. The first figure shows a shift by +10% for each color and the second figure -10%.

Similar to the brightness gradients but the following saturation gradients show a change of the Decimal color 3349801 by changing the saturation by 10% instead.

■ 3349801

■ 3349801

16777215

■ 2032917

■ 6441302

■ 0

■ 8085870

■ 9796232

■ 11572386

■ 13348541

■ 15256281

■ 16770805

■ 3349801

■ 3349801

■ 3348519

■ 3351083

■ 3347236

■ 3352366

■ 3345954

■ 3353648

■ 3344672

■ 3354930

■ 3343133

■ 3356469

■ 3342364

■ 3357751

■ 3359033

■ 3360316

■ 3361598

Harmonies

Analogous

The Analogous color harmony consists of three colors that are next to each other on the color wheel.



2826289



3349801



3546143

Triad

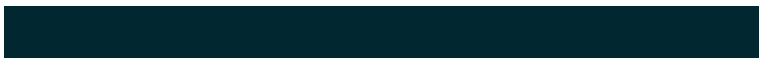
The Triadic color harmony groups three colors that are evenly spaced from another and form a triangle on the color wheel.



3349801



2434321



75825

Complementary

The Complementary color scheme is a pair of colors which are on the opposite of each other on the color wheel.



3349801



1913639

Split Complementary

Split-complementary colors differ from the complementary color scheme. The scheme consists of three colors, the original color and two neighbors of the complement color.



207144



3349801



1779478

Square

The Square scheme is like the rectangle color scheme, but the four colors are evenly spaced on the color wheel.



3349801



3023377



993310



861750

Rectangle

The Rectangle color scheme consists of four colors that form a rectangle on the color wheel.



3349801



3481114



993310



10286

Sweetspot

The Sweet Spot groups the original color and five complimentary colors.



3349801



4340286



2563379



2169887



10592673



2171169

Same Dimension

The Same Dimension uses a secret algorithm to generate beautiful new colors.



3349801



4333619



3349790



1709848



5832753



14221430

Inverse Universe

The Inverse Universe completely reimagines the original color for something new.



3349801



4333619



1913650



1709848



5832753



14221430

Previews

White Background



This preview shows how the Decimal color 3349801 looks on a white background.

Color Contrast Check

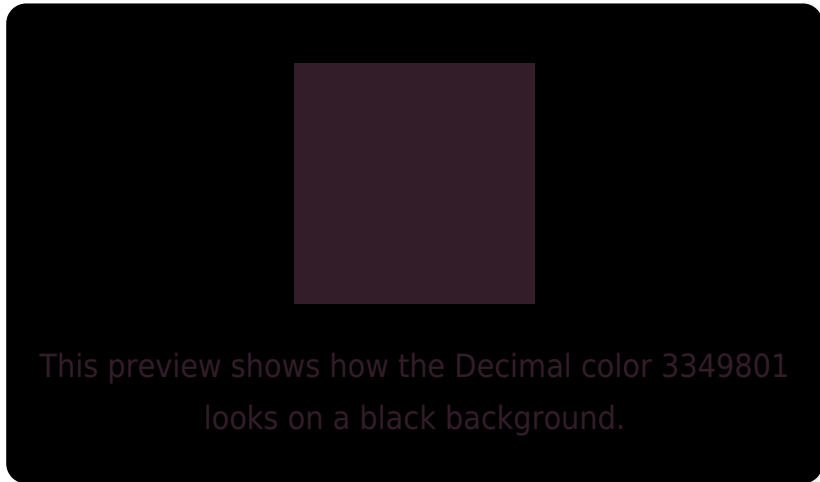
Large Text (above 18pt) WCAG AA ✓ Pass

Any Text WCAG AA ✓ Pass

Large Text (above 18pt) WCAG AAA ✓ Pass

Any Text WCAG AAA ✓ Pass

Black Background



Color Contrast Check

Large Text (above 18pt) WCAG AA × Fail

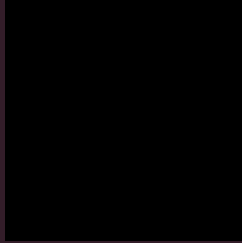
Any Text WCAG AA × Fail

Large Text (above 18pt) WCAG AAA × Fail

Any Text WCAG AAA × Fail

If you want to check with other color combinations, try the [Color Contrast Checker](#).

Decimal 3349801 Background



This preview shows how black text looks on a background with the Decimal color 3349801.



This preview shows how white text looks on a background with the Decimal color 3349801.

Color Blindness Simulation

Color vision deficiency is a very complex topic, and I could not describe the different causes any better than Wikipedia does, so if you want to learn more, you should check out their [article about color blindness](#).

Dichromacy



Original Color
3349801

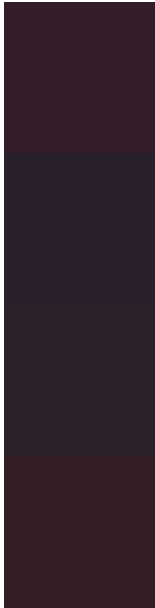
Protanopia
2237486

Deuteranopia
2499368



Tritanopia
3284769

Trichromacy



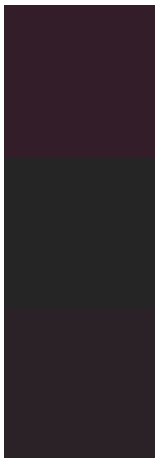
Original Color
3349801

Protanomaly
2629932

Deuteranomaly
2826536

Tritanomaly
3284516

Monochromacy



Original Color
3349801

Achromatopsia
2434341

Achromatomaly
2761254

CSS Examples

Text

The CSS property to change the color of the text to Decimal 3349801 is called "color". The color property can be set on classes, ids or directly on the HTML element.

This example shows how text in the color #331D29 looks like.

```
.text, #text, p{  
    color:#331D29  
}
```

If you want to add a text shadow in that color use the text-shadow property, you can generate a text shadow directly with our [CSS Text Shadow Generator](#).

Here you see how black text with a 4 pixel #331D29 colored shadow looks like.

```
.shadow{ text-shadow: 4px 4px 2px #331D29
}
```

Border

The CSS property to change the border of an element to Decimal 3349801 is called "border". The border property can be set on classes, ids or directly on the HTML element.

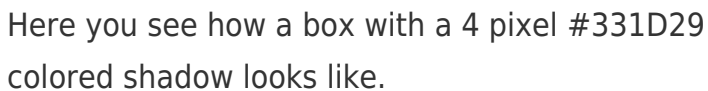
This example shows the color as border, it can be applied via the CSS property "border" or "border-color".

```
.border, #border, table{ border:4px solid
#331D29 }
```

If only the border color should be changed use the property `border-color`.

```
.border{ border-color:#331D29 }
```

If you want to add a box shadow in that color use:

A rectangular box with a dark blue shadow. The box is white with a thin black border. The shadow is a dark blue color, matching the #331D29 hex code mentioned in the text. The shadow is applied to the bottom and right sides of the box, creating a 3D effect.

Here you see how a box with a 4 pixel #331D29 colored shadow looks like.

```
.boxshadow{ -moz-box-shadow:4px 4px 4px  
4px #331D29; -webkit-box-shadow:4px 4px  
4px 4px #331D29; box-shadow:4px 4px 4px  
4px #331D29 }
```

Background

The CSS property to change the background color of an element to Decimal 3349801 is called "background". The background property can be set on classes, ids or directly on the HTML element.

```
.background, #background, body{  
background:#331D29 }
```

If only the background color should be changed can be used:

```
.background{ background-color:#331D29 }
```

This example shows the color as background, it is applied via the CSS property "background".

To optimize and compress your CSS code, you can use our [online CSS compressor and optimizer](#) based on csstidy. If you want to create a linear or radial gradient as background or border, check our [CSS Gradient Generator](#).

Hey! You found this booklet interesting? Support Converting Colors with the new Membership Option!

The pro membership hides all ads, plus gives you double the colors in the color bucket, and more awesome pro features!

[Learn more, Memberships starting at \\$2.50/m!](#)

**Follow me
on Twitter!**

@ConvertingColor