

Converting Colors

Decimal(3610899)

Have a look what the booklet for
Decimal(3610899) contains.

Decimal(3610899)	3
<i>Conversions</i>	4
<i>Details</i>	6
<i>Harmonies</i>	11
<i>Previews</i>	23
<i>Color Blindness Simulation</i>	26
<i>CSS Examples</i>	29

Color

Decimal(3610899)

Conversions

Conversions Part 1

Format	Color
Hex	371913
RGB	55, 25, 19
RGB Percent	22%, 10%, 7%
CMY	0.7843, 0.9020, 0.9255
CMYK	0.00, 0.55, 0.65, 0.78
HSL	10°, 49%, 15%
HSV	10°, 65%, 22%
XYZ	2.0407, 1.5545, 0.8086
YIQ	33.2860, 19.8060, 4.4940

Conversions

Conversions Part 2

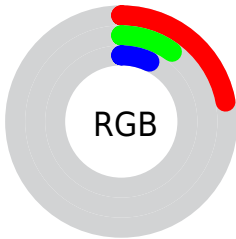
Format	Color
RYB	55, 26, 19
Decimal	3610899
CIELab	12.95, 14.18, 10.76
CIELCh	13, 17.804, 37.194
Yxy	1.5545, 0.4634, 0.3530
Android (android.graphics.Color)	4281800979 (0xFF371913)
YUV	33.2860, -7.0430, 19.0432
Hunter-Lab	12.4680, 7.3974, 4.8824

Details

The Decimal color **3610899** is a dark color, and the websafe version is hex **330000**. A complement of this color would be **1257783**, and the grayscale version is **2171169**.

A 20% lighter version of the original color is **6833469**, and **0** is the 20% darker color. If you saturate the color by 10%, you get **3609614**, and if you desaturate by 10%, it is **3612185**.

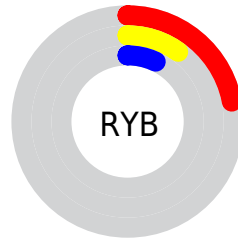
Distribution



Red (22%)

Green (10%)

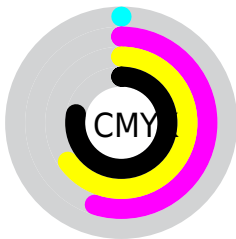
Blue (7%)



Red (22%)

Yellow (10%)

Blue (7%)

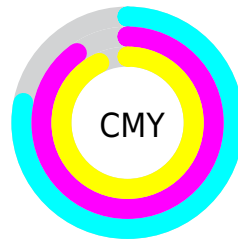


Cyan (0%)

Magenta (55%)

Yellow (65%)

Black (78%)



Cyan (78%)

Magenta (90%)

Yellow (93%)

Brightness & Saturation Gradients

These gradients show how the Decimal color 3610899 changes by changing the brightness by 10 percent. The first figure shows a shift by +10% for each color and the second figure -10%.

Similar to the brightness gradients but the following saturation gradients show a change of the Decimal color 3610899 by changing the saturation by 10% instead.

 3610899

 3610899

 16776691

 2228224

 6833469

 0

 8543316

 10319213

 12095366

 13937056

 15844795

 16769495

 3610899

 3610899

■ 3609614

■ 3612185

■ 3608584

■ 3613214

■ 3607298

■ 3614500

■ 3606784

■ 3615529

■ 3616815

■ 3618100

■ 3619130

■ 3620415

■ 3621445

Harmonies

Analogous

The Analogous color harmony consists of three colors that are next to each other on the color wheel.



3675935



3610899



3218695

Triad

The Triadic color harmony groups three colors that are evenly spaced from another and form a triangle on the color wheel.



3610899



468759



1122874

Complementary

The Complementary color scheme is a pair of colors which are on the opposite of each other on the color wheel.



3610899



1257783

Split Complementary

Split-complementary colors differ from the complementary color scheme. The scheme consists of three colors, the original color and two neighbors of the complement color.



9528



3610899



10276

Square

The Square scheme is like the rectangle color scheme, but the four colors are evenly spaced on the color wheel.



3610899



1647883



10032



2497845

Rectangle

The Rectangle color scheme consists of four colors that form a rectangle on the color wheel.



3610899



2760707



10032



402234

Sweetspot

The Sweet Spot groups the original color and five complimentary colors.



3610899



4668473



3609393



2366747



10724259



2368548

Same Dimension

The Same Dimension uses a secret algorithm to generate beautiful new colors.



3610899



4659215



3615507



1841689



6033152



14361856

Inverse Universe

The Inverse Universe completely reimagines the original color for something new.



1257783



998983



1253175



1645596



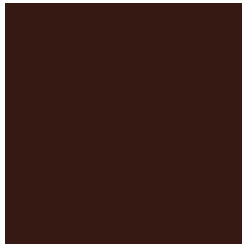
19548



47067

Previews

White Background



This preview shows how the Decimal color 3610899 looks on a white background.

Color Contrast Check

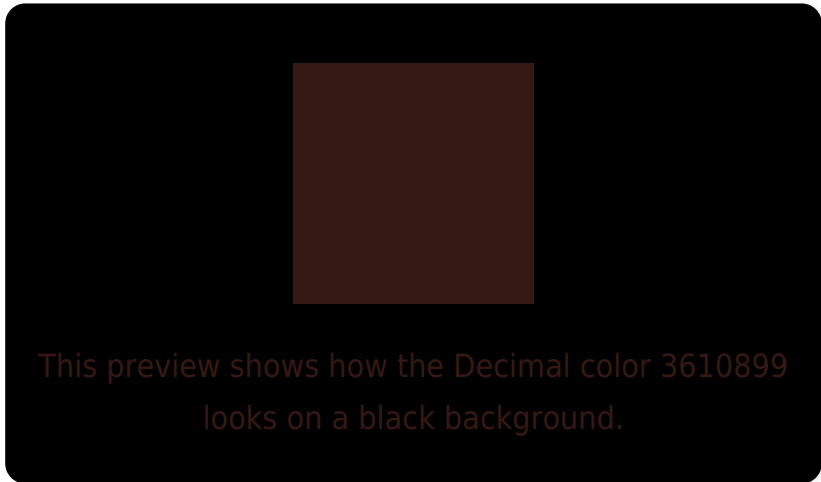
Large Text (above 18pt) WCAG AA ✓ Pass

Any Text WCAG AA ✓ Pass

Large Text (above 18pt) WCAG AAA ✓ Pass

Any Text WCAG AAA ✓ Pass

Black Background



Color Contrast Check

Large Text (above 18pt) WCAG AA × Fail

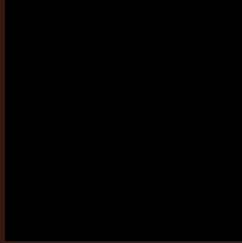
Any Text WCAG AA × Fail

Large Text (above 18pt) WCAG AAA × Fail

Any Text WCAG AAA × Fail

If you want to check with other color combinations, try the [Color Contrast Checker](#).

Decimal 3610899 Background



This preview shows how black text looks on a background with the Decimal color 3610899.

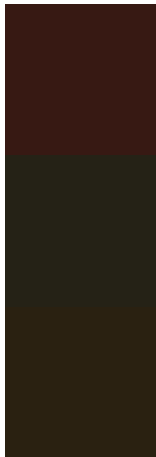


This preview shows how white text looks on a background with the Decimal color 3610899.

Color Blindness Simulation

Color vision deficiency is a very complex topic, and I could not describe the different causes any better than Wikipedia does, so if you want to learn more, you should check out their [article about color blindness](#).

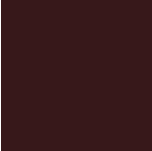
Dichromacy



Original Color
3610899

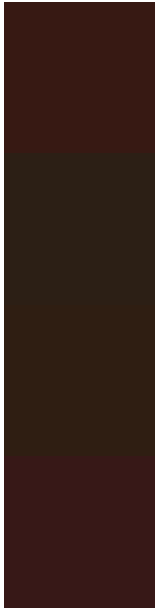
Protanopia
2433558

Deuteranopia
2760977



Tritanopia
3610650

Trichromacy



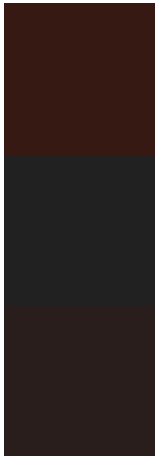
Original Color
3610899

Protanomaly
2891541

Deuteranomaly
3087890

Tritanomaly
3610647

Monochromacy



Original Color
3610899

Achromatopsia
2171169

Achromatomaly
2694684

CSS Examples

Text

The CSS property to change the color of the text to Decimal 3610899 is called "color". The color property can be set on classes, ids or directly on the HTML element.

This example shows how text in the color #371913 looks like.

```
.text, #text, p{  
    color:#371913  
}
```

If you want to add a text shadow in that color use the text-shadow property, you can generate a text shadow directly with our [CSS Text Shadow Generator](#).

Here you see how black text with a 4 pixel #371913 colored shadow looks like.

```
.shadow{ text-shadow: 4px 4px 2px #371913
}
```

Border

The CSS property to change the border of an element to Decimal 3610899 is called "border". The border property can be set on classes, ids or directly on the HTML element.

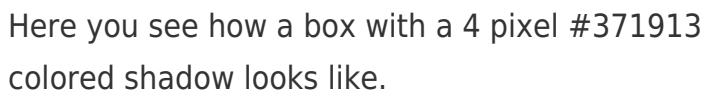
This example shows the color as border, it can be applied via the CSS property "border" or "border-color".

```
.border, #border, table{ border:4px solid
#371913 }
```

If only the border color should be changed use the property `border-color`.

```
.border{ border-color:#371913 }
```

If you want to add a box shadow in that color use:



Here you see how a box with a 4 pixel #371913 colored shadow looks like.

```
.boxshadow{ -moz-box-shadow:4px 4px 4px  
4px #371913; -webkit-box-shadow:4px 4px  
4px 4px #371913; box-shadow:4px 4px 4px  
4px #371913 }
```

Background

The CSS property to change the background color of an element to Decimal 3610899 is called "background". The background property can be set on classes, ids or directly on the HTML element.

```
.background, #background, body{  
background:#371913 }
```

If only the background color should be changed can be used:

```
.background{ background-color:#371913 }
```

This example shows the color as background, it is applied via the CSS property "background".

To optimize and compress your CSS code, you can use our [online CSS compressor and optimizer](#) based on csstidy. If you want to create a linear or radial gradient as background or border, check our [CSS Gradient Generator](#).

Hey! You found this booklet interesting? Support Converting Colors with the new Membership Option!

The pro membership hides all ads, plus gives you double the colors in the color bucket, and more awesome pro features!

[Learn more, Memberships starting at \\$2.50/m!](#)

**Follow me
on Twitter!**

@ConvertingColor