

# Converting Colors

Decimal(3675928)

Have a look what the booklet for  
Decimal(3675928) contains.

<b>Decimal(3675928)</b> .....	3
<i><b>Conversions</b></i> .....	4
<i><b>Details</b></i> .....	6
<i><b>Harmonies</b></i> .....	11
<i><b>Previews</b></i> .....	23
<i><b>Color Blindness Simulation</b></i> .....	26
<i><b>CSS Examples</b></i> .....	29

**Color**

**Decimal(3675928)**

# Conversions

## Conversions Part 1

Format	Color
Hex	381718
RGB	56, 23, 24
RGB Percent	22%, 9%, 9%
CMY	0.7804, 0.9098, 0.9059
CMYK	0.00, 0.59, 0.57, 0.78
HSL	358°, 42%, 15%
HSV	358°, 59%, 22%
XYZ	2.1022, 1.5195, 1.0466
YIQ	32.9810, 19.3470, 7.3070

# Conversions

## Conversions Part 2

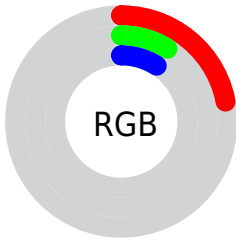
<b>Format</b>	<b>Color</b>
<b>R<sub>YB</sub></b>	56, 23, 24
Decimal	3675928
CIE <sub>Lab</sub>	12.73, 16.51, 7.01
CIE <sub>LCh</sub>	13, 17.935, 23.015
Yxy	1.5195, 0.4503, 0.3255
Android (android.graphics.Color)	4281866008 (0xFF381718)
YUV	32.9810, -4.4276, 20.1877
Hunter-Lab	12.3268, 8.8687, 3.5945

# Details

The Decimal color **3675928** is a dark color, and the websafe version is hex **330000**. A complement of this color would be **1521719**, and the grayscale version is **2171169**.

A 20% lighter version of the original color is **6898499**, and **0** is the 20% darker color. If you saturate the color by 10%, you get **3674387**, and if you desaturate by 10%, it is **3677469**.

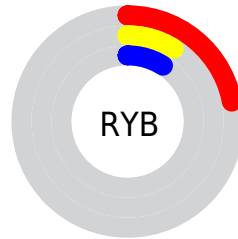
# Distribution



Red (22%)

Green (9%)

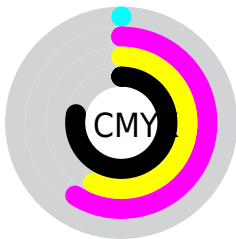
Blue (9%)



Red (22%)

Yellow (9%)

Blue (9%)

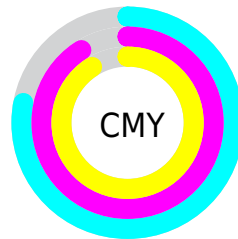


Cyan (0%)

Magenta (59%)

Yellow (57%)

Black (78%)



Cyan (78%)

Magenta (91%)

Yellow (91%)

# Brightness & Saturation Gradients

These gradients show how the Decimal color 3675928 changes by changing the brightness by 10 percent. The first figure shows a shift by +10% for each color and the second figure -10%.

Similar to the brightness gradients but the following saturation gradients show a change of the Decimal color 3675928 by changing the saturation by 10% instead.



 3675928

 3675928

 16776186

 2359296

 6898499

 0

 8608602

 10384243

 12160396

 14002342

 15909825

 16768989

 3675928

 3675928

■ 3674387

■ 3677469

■ 3673101

■ 3678755

■ 3671560

■ 3680296

■ 3670274

■ 3681582

■ 3670018

■ 3683123

■ 3684665

■ 3685950

■ 3687491

■ 3688777

# Harmonies

## Analogous

The Analogous color harmony consists of three colors that are next to each other on the color wheel.



3544868



3675928



3414796

# Triad

The Triadic color harmony groups three colors that are evenly spaced from another and form a triangle on the color wheel.



3675928



1058321



74553

# Complementary

The Complementary color scheme is a pair of colors which are on the opposite of each other on the color wheel.



3675928



1521719

# Split Complementary

Split-complementary colors differ from the complementary color scheme. The scheme consists of three colors, the original color and two neighbors of the complement color.



9781



3675928



10014

# Square

The Square scheme is like the rectangle color scheme, but the four colors are evenly spaced on the color wheel.



3675928



2040581



10026



1908536

# Rectangle

The Rectangle color scheme consists of four colors that form a rectangle on the color wheel.



3675928



3087876



10026



9273



# Sweetspot

The Sweet Spot groups the original color and five complimentary colors.



3675928



4865341



3610424



2498078



10921638



2500134



# Same Dimension

The Same Dimension uses a secret algorithm to generate beautiful new colors.



3675928



4855063



3679767



1841433



6029315



14352391



# Inverse Universe

The Inverse Universe completely reimagines the original color for something new.



3675928



4855063



1517880



1841433



6029315

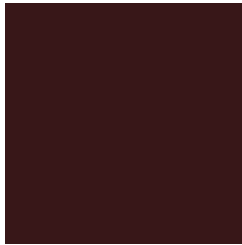


14352391



# Previews

## White Background



This preview shows how the Decimal color 3675928 looks on a white background.

## Color Contrast Check

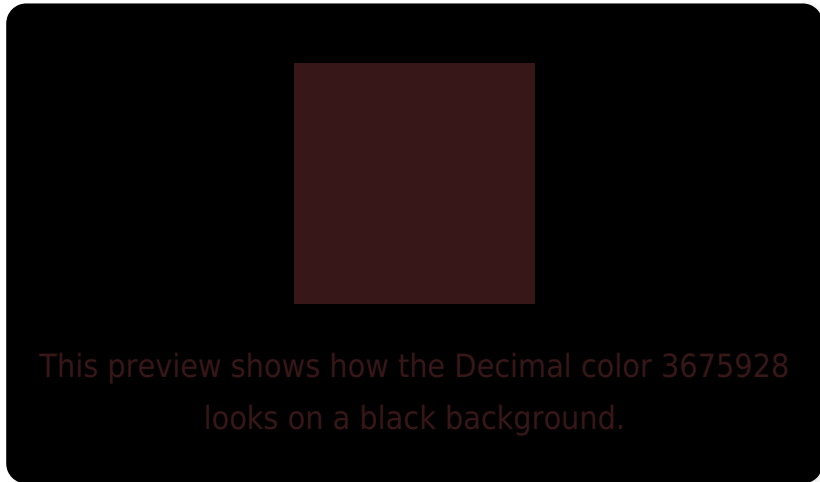
Large Text (above 18pt) WCAG AA ✓ Pass

Any Text WCAG AA ✓ Pass

Large Text (above 18pt) WCAG AAA ✓ Pass

Any Text WCAG AAA ✓ Pass

# Black Background



## Color Contrast Check

Large Text (above 18pt) WCAG AA × Fail

Any Text WCAG AA × Fail

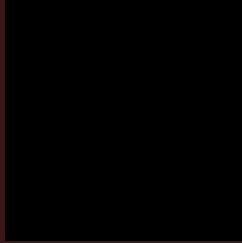
Large Text (above 18pt) WCAG AAA × Fail

Any Text WCAG AAA × Fail

If you want to check with other color combinations, try the [Color Contrast Checker](#).



## Decimal 3675928 Background



This preview shows how black text looks on a background with the Decimal color 3675928.



This preview shows how white text looks on a background with the Decimal color 3675928.

# Color Blindness Simulation

Color vision deficiency is a very complex topic, and I could not describe the different causes any better than Wikipedia does, so if you want to learn more, you should check out their [article about color blindness](#).

## Dichromacy



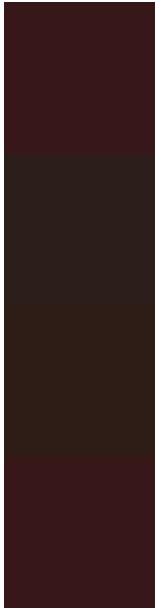
**Original Color**  
3675928

**Protanopia**  
2368029

**Deuteranopia**  
2695190



# Trichromacy



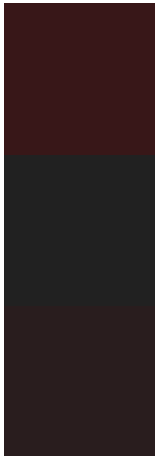
**Original Color**  
3675928

**Protanomaly**  
2825755

**Deuteranomaly**  
3022103

**Tritanomaly**  
3675928

# Monochromacy



**Original Color**  
3675928

**Achromatopsia**  
2171169

**Achromatomaly**  
2694430

# CSS Examples

## Text

The CSS property to change the color of the text to Decimal 3675928 is called "color". The color property can be set on classes, ids or directly on the HTML element.

This example shows how text in the color #381718 looks like.

```
.text, #text, p{  
  color:#381718  
}
```

If you want to add a text shadow in that color use the text-shadow property, you can generate a text shadow directly with our [CSS Text Shadow Generator](#).

Here you see how black text with a 4 pixel #381718 colored shadow looks like.

```
.shadow{ text-shadow: 4px 4px 2px #381718
}
```

## Border

The CSS property to change the border of an element to Decimal 3675928 is called "border". The border property can be set on classes, ids or directly on the HTML element.

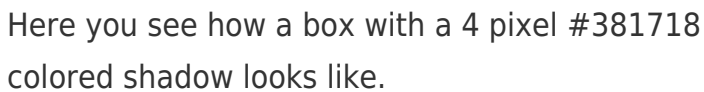
This example shows the color as border, it can be applied via the CSS property "border" or "border-color".

```
.border, #border, table{ border:4px solid
#381718 }
```

If only the border color should be changed use the property `border-color`.

```
.border{ border-color:#381718 }
```

If you want to add a box shadow in that color use:



Here you see how a box with a 4 pixel #381718 colored shadow looks like.

```
.boxshadow{ -moz-box-shadow:4px 4px 4px  
4px #381718; -webkit-box-shadow:4px 4px  
4px 4px #381718; box-shadow:4px 4px 4px  
4px #381718 }
```

# Background

The CSS property to change the background color of an element to Decimal 3675928 is called "background". The background property can be set on classes, ids or directly on the HTML element.

```
.background, #background, body{  
background:#381718 }
```

If only the background color should be changed can be used:

```
.background{ background-color:#381718 }
```

This example shows the color as background, it is applied via the CSS property "background".

To optimize and compress your CSS code, you can use our [online CSS compressor and optimizer](#) based on csstidy. If you want to create a linear or radial gradient as background or border, check our [CSS Gradient Generator](#).



# Hey! You found this booklet interesting? Support Converting Colors with the new Membership Option!

The pro membership hides all ads, plus gives you double the colors in the color bucket, and more awesome pro features!

**[Learn more, Memberships starting at \\$2.50/m!](#)**

**Follow me  
on Twitter!**

@ConvertingColor