

Converting Colors

Decimal(3678754)

Have a look what the booklet for
Decimal(3678754) contains.

Decimal(3678754)	3
<i>Conversions</i>	4
<i>Details</i>	6
<i>Harmonies</i>	11
<i>Previews</i>	23
<i>Color Blindness Simulation</i>	26
<i>CSS Examples</i>	29

Color

Decimal(3678754)

Conversions

Conversions Part 1

Format	Color
Hex	382222
RGB	56, 34, 34
RGB Percent	22%, 13%, 13%
CMY	0.7804, 0.8667, 0.8667
CMYK	0.00, 0.39, 0.39, 0.78
HSL	0°, 24%, 18%
HSV	0°, 39%, 22%
XYZ	2.4916, 2.1003, 1.7874
YIQ	40.5780, 13.1120, 4.6640

Conversions

Conversions Part 2

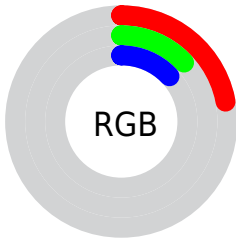
Format	Color
R_{YB}	56, 34, 34
Decimal	3678754
CIE _{Lab}	16.01, 10.58, 4.35
CIE _{LCh}	16, 11.439, 22.357
Yxy	2.1003, 0.3906, 0.3292
Android (android.graphics.Color)	4281868834 (0xFF382222)
YUV	40.5780, -3.2430, 13.5251
Hunter-Lab	14.4924, 5.3274, 2.8321

Details

The Decimal color **3678754** is a dark color, and the websafe version is hex **333333**. A complement of this color would be **2242616**, and the grayscale version is **2697513**.

A 20% lighter version of the original color is **6836046**, and **0** is the 20% darker color. If you saturate the color by 10%, you get **3677212**, and if you desaturate by 10%, it is **3680296**.

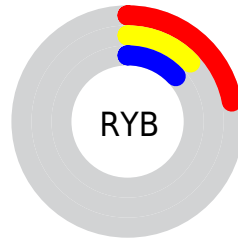
Distribution



Red (22%)

Green (13%)

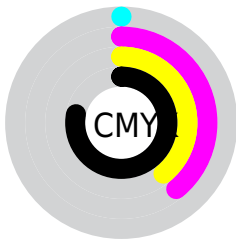
Blue (13%)



Red (22%)

Yellow (13%)

Blue (13%)

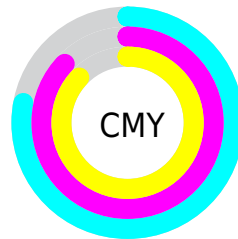


Cyan (0%)

Magenta (39%)

Yellow (39%)

Black (78%)



Cyan (78%)

Magenta (87%)

Yellow (87%)

Brightness & Saturation Gradients

These gradients show how the Decimal color 3678754 changes by changing the brightness by 10 percent. The first figure shows a shift by +10% for each color and the second figure -10%.

Similar to the brightness gradients but the following saturation gradients show a change of the Decimal color 3678754 by changing the saturation by 10% instead.



3678754



3678754

16777215



2297100



6836046



0



8480614



10256511



12032665



13809076



15716559



16772332



3678754



3678754

■ 3677212

■ 3680296

■ 3675927

■ 3681581

■ 3674385

■ 3683123

■ 3673100

■ 3684408

■ 3671558

■ 3685950

■ 3670016

■ 3687492

■ 3688777

■ 3690319

■ 3691604

Harmonies

Analogous

The Analogous color harmony consists of three colors that are next to each other on the color wheel.



3547690



3678754



3482651

Triad

The Triadic color harmony groups three colors that are evenly spaced from another and form a triangle on the color wheel.



3678754



1977118



1714488

Complementary

The Complementary color scheme is a pair of colors which are on the opposite of each other on the color wheel.



3678754



2242616

Split Complementary

Split-complementary colors differ from the complementary color scheme. The scheme consists of three colors, the original color and two neighbors of the complement color.



1059636



3678754



1387557

Square

The Square scheme is like the rectangle color scheme, but the four colors are evenly spaced on the color wheel.



3678754



2566425



928814



2500151

Rectangle

The Rectangle color scheme consists of four colors that form a rectangle on the color wheel.



3678754



3286552



928814



1452599

Sweetspot

The Sweet Spot groups the original color and five complimentary colors.



3678754



4866369



3678776



2498849



10921638



2500134

Same Dimension

The Same Dimension uses a secret algorithm to generate beautiful new colors.



3678754



4859687



3681570



1841433



6029312



14352384

Inverse Universe

The Inverse Universe completely reimagines the original color for something new.



2242616



2574922



2239800



1645596



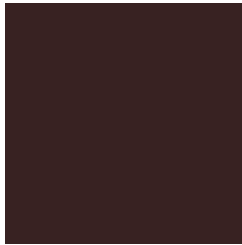
23644



56283

Previews

White Background



This preview shows how the Decimal color 3678754 looks on a white background.

Color Contrast Check

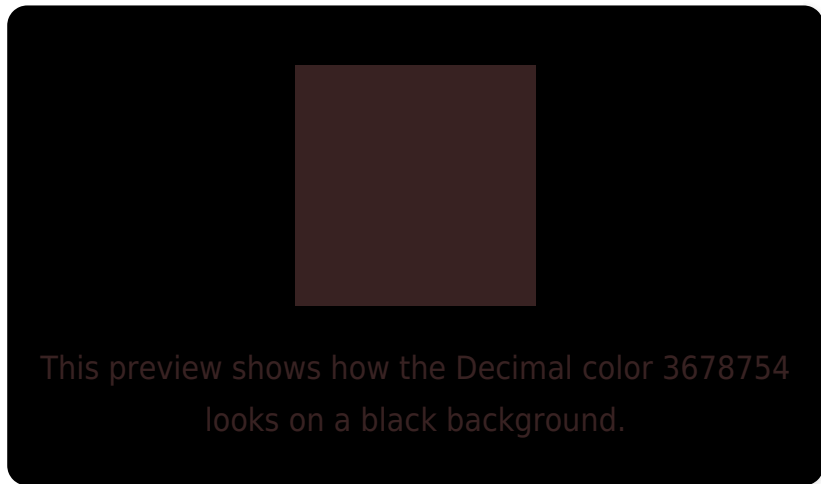
Large Text (above 18pt) WCAG AA ✓ Pass

Any Text WCAG AA ✓ Pass

Large Text (above 18pt) WCAG AAA ✓ Pass

Any Text WCAG AAA ✓ Pass

Black Background



Color Contrast Check

Large Text (above 18pt) WCAG AA × Fail

Any Text WCAG AA × Fail

Large Text (above 18pt) WCAG AAA × Fail

Any Text WCAG AAA × Fail

If you want to check with other color combinations, try the [Color Contrast Checker](#).

Decimal 3678754 Background



This preview shows how black text looks on a background with the Decimal color 3678754.

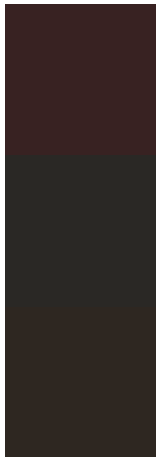


This preview shows how white text looks on a background with the Decimal color 3678754.

Color Blindness Simulation

Color vision deficiency is a very complex topic, and I could not describe the different causes any better than Wikipedia does, so if you want to learn more, you should check out their [article about color blindness](#).

Dichromacy

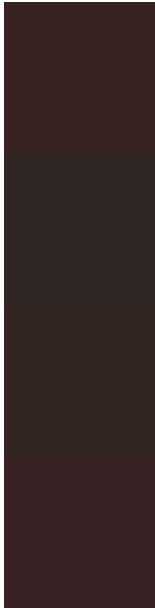


Original Color
3678754

Protanopia
2762789

Deuteranopia
3024673

Trichromacy



Original Color

3678754

Protanomaly

3089956

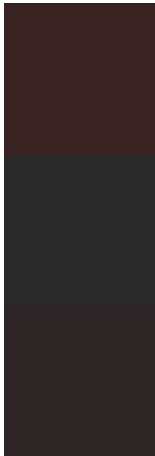
Deuteranomaly

3286305

Tritanomaly

3678755

Monochromacy



Original Color

3678754

Achromatopsia

2697513

Achromatomaly

3024422

CSS Examples

Text

The CSS property to change the color of the text to Decimal 3678754 is called "color". The color property can be set on classes, ids or directly on the HTML element.

This example shows how text in the color #382222 looks like.

```
.text, #text, p{  
    color:#382222  
}
```

If you want to add a text shadow in that color use the text-shadow property, you can generate a text shadow directly with our [CSS Text Shadow Generator](#).

Here you see how black text with a 4 pixel #382222 colored shadow looks like.

```
.shadow{ text-shadow: 4px 4px 2px #382222
}
```

Border

The CSS property to change the border of an element to Decimal 3678754 is called "border". The border property can be set on classes, ids or directly on the HTML element.

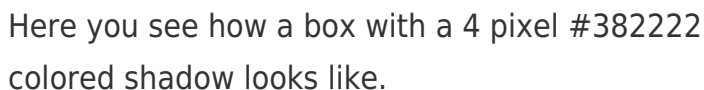
This example shows the color as border, it can be applied via the CSS property "border" or "border-color".

```
.border, #border, table{ border:4px solid
#382222 }
```

If only the border color should be changed use the property border-color.

```
.border{ border-color:#382222 }
```

If you want to add a box shadow in that color use:



Here you see how a box with a 4 pixel #382222 colored shadow looks like.

```
.boxshadow{ -moz-box-shadow:4px 4px 4px  
4px #382222; -webkit-box-shadow:4px 4px  
4px 4px #382222; box-shadow:4px 4px 4px  
4px #382222 }
```

Background

The CSS property to change the background color of an element to Decimal 3678754 is called "background". The background property can be set on classes, ids or directly on the HTML element.

```
.background, #background, body{  
background:#382222 }
```

If only the background color should be changed can be used:

```
.background{ background-color:#382222 }
```

This example shows the color as background, it is applied via the CSS property "background".

To optimize and compress your CSS code, you can use our [online CSS compressor and optimizer](#) based on csstidy. If you want to create a linear or radial gradient as background or border, check our [CSS Gradient Generator](#).

Hey! You found this booklet interesting? Support Converting Colors with the new Membership Option!

The pro membership hides all ads, plus gives you double the colors in the color bucket, and more awesome pro features!

[Learn more, Memberships starting at \\$2.50/m!](#)

**Follow me
on Twitter!**

@ConvertingColor