

Converting Colors

Decimal(3939870)

Have a look what the booklet for
Decimal(3939870) contains.

Decimal(3939870)	3
<i>Conversions</i>	4
<i>Details</i>	6
<i>Harmonies</i>	11
<i>Previews</i>	23
<i>Color Blindness Simulation</i>	26
<i>CSS Examples</i>	29

Color

Decimal(3939870)

Conversions

Conversions Part 1

Format	Color
Hex	3C1E1E
RGB	60, 30, 30
RGB Percent	24%, 12%, 12%
CMY	0.7647, 0.8824, 0.8824
CMYK	0.00, 0.50, 0.50, 0.76
HSL	0°, 33%, 18%
HSV	0°, 50%, 24%
XYZ	2.5621, 1.9829, 1.4760
YIQ	38.9700, 17.8800, 6.3600

Conversions

Conversions Part 2

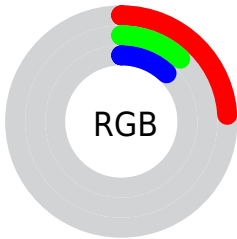
Format	Color
RYB	60, 30, 30
Decimal	3939870
CIELab	15.40, 14.58, 6.45
CIELCh	15, 15.946, 23.844
Yxy	1.9829, 0.4255, 0.3293
Android (android.graphics.Color)	4282129950 (0xFF3C1E1E)
YUV	38.9700, -4.4222, 18.4433
Hunter-Lab	14.0817, 7.8342, 3.6426

Details

The Decimal color **3939870** is a dark color, and the websafe version is hex **330000**. A complement of this color would be **1981500**, and the grayscale version is **2565927**.

A 20% lighter version of the original color is **7162442**, and **0** is the 20% darker color. If you saturate the color by 10%, you get **3938328**, and if you desaturate by 10%, it is **3941412**.

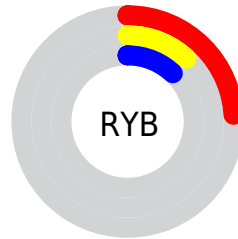
Distribution



Red (24%)

Green (12%)

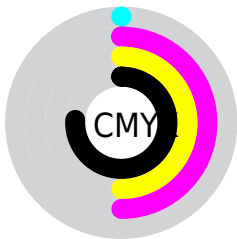
Blue (12%)



Red (24%)

Yellow (12%)

Blue (12%)

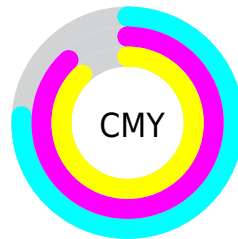


Cyan (0%)

Magenta (50%)

Yellow (50%)

Black (76%)



Cyan (76%)

Magenta (88%)

Yellow (88%)

Brightness & Saturation Gradients

These gradients show how the Decimal color 3939870 changes by changing the brightness by 10 percent. The first figure shows a shift by +10% for each color and the second figure -10%.

Similar to the brightness gradients but the following saturation gradients show a change of the Decimal color 3939870 by changing the saturation by 10% instead.



3939870



3939870

16777215



2557957



7162442



0



8872545



10648442



12424596



14266542



16174282



16771302



3939870



3939870

■ 3938328

■ 3941412

■ 3936786

■ 3942954

■ 3935244

■ 3944496

■ 3933702

■ 3946038

■ 3932160

■ 3947580

■ 3949122

■ 3950664

■ 3952206

■ 3953748

Harmonies

Analogous

The Analogous color harmony consists of three colors that are next to each other on the color wheel.



3808809



3939870



3678485

Triad

The Triadic color harmony groups three colors that are evenly spaced from another and form a triangle on the color wheel.



3939870



1518361



1058877

Complementary

The Complementary color scheme is a pair of colors which are on the opposite of each other on the color wheel.



3939870



1981500

Split Complementary

Split-complementary colors differ from the complementary color scheme. The scheme consists of three colors, the original color and two neighbors of the complement color.



11064



3939870



404516

Square

The Square scheme is like the rectangle color scheme, but the four colors are evenly spaced on the color wheel.



3939870



2435345



11311



2368571

Rectangle

The Rectangle color scheme consists of four colors that form a rectangle on the color wheel.



3939870



3351569



11311



469308

Sweetspot

The Sweet Spot groups the original color and five complimentary colors.



3939870



5194563



3939900



2695457



11053224



2697513

Same Dimension

The Same Dimension uses a secret algorithm to generate beautiful new colors.



3939870



5185568



3943710



2038812



6160384



14548992

Inverse Universe

The Inverse Universe completely reimagines the original color for something new.



1981500



2117455



1977660



1842975



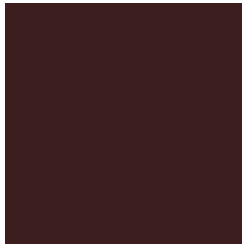
24158



57054

Previews

White Background



This preview shows how the Decimal color 3939870 looks on a white background.

Color Contrast Check

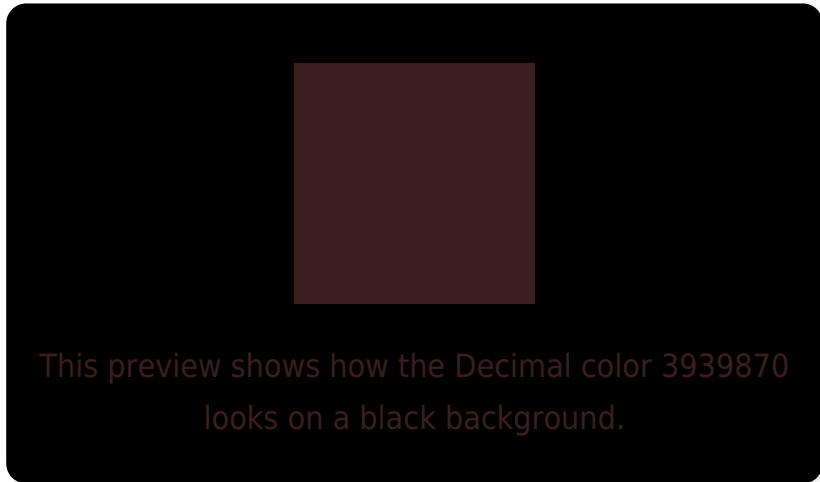
Large Text (above 18pt) WCAG AA ✓ Pass

Any Text WCAG AA ✓ Pass

Large Text (above 18pt) WCAG AAA ✓ Pass

Any Text WCAG AAA ✓ Pass

Black Background



Color Contrast Check

Large Text (above 18pt) WCAG AA × Fail

Any Text WCAG AA × Fail

Large Text (above 18pt) WCAG AAA × Fail

Any Text WCAG AAA × Fail

If you want to check with other color combinations, try the [Color Contrast Checker](#).

Decimal 3939870 Background



This preview shows how black text looks on a background with the Decimal color 3939870.



This preview shows how white text looks on a background with the Decimal color 3939870.

Color Blindness Simulation

Color vision deficiency is a very complex topic, and I could not describe the different causes any better than Wikipedia does, so if you want to learn more, you should check out their [article about color blindness](#).

Dichromacy



Original Color
3939870

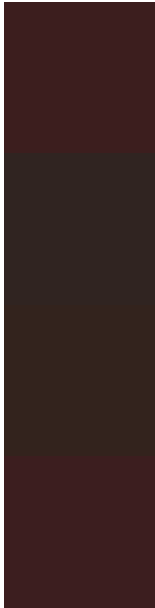
Protanopia
2696994

Deuteranopia
3024413



Tritanopia
3939872

Trichromacy



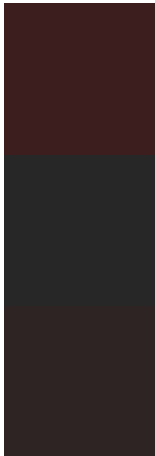
Original Color
3939870

Protanomaly
3154977

Deuteranomaly
3351325

Tritanomaly
3939871

Monochromacy



Original Color
3939870

Achromatopsia
2565927

Achromatomaly
3089444

CSS Examples

Text

The CSS property to change the color of the text to Decimal 3939870 is called "color". The color property can be set on classes, ids or directly on the HTML element.

This example shows how text in the color #3C1E1E looks like.

```
.text, #text, p{  
    color:#3C1E1E  
}
```

If you want to add a text shadow in that color use the text-shadow property, you can generate a text shadow directly with our [CSS Text Shadow Generator](#).

Here you see how black text with a 4 pixel #3C1E1E colored shadow looks like.

```
.shadow{ text-shadow: 4px 4px 2px #3C1E1E
}
```

Border

The CSS property to change the border of an element to Decimal 3939870 is called "border". The border property can be set on classes, ids or directly on the HTML element.

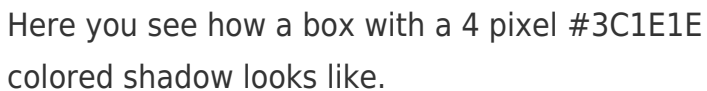
This example shows the color as border, it can be applied via the CSS property "border" or "border-color".

```
.border, #border, table{ border:4px solid
#3C1E1E }
```

If only the border color should be changed use the property `border-color`.

```
.border{ border-color:#3C1E1E }
```

If you want to add a box shadow in that color use:



Here you see how a box with a 4 pixel #3C1E1E colored shadow looks like.

```
.boxshadow{ -moz-box-shadow:4px 4px 4px  
4px #3C1E1E; -webkit-box-shadow:4px 4px  
4px 4px #3C1E1E; box-shadow:4px 4px 4px  
4px #3C1E1E }
```

Background

The CSS property to change the background color of an element to Decimal 3939870 is called "background". The background property can be set on classes, ids or directly on the HTML element.

```
.background, #background, body{  
background:#3C1E1E }
```

If only the background color should be changed can be used:

```
.background{ background-color:#3C1E1E }
```

This example shows the color as background, it is applied via the CSS property "background".

To optimize and compress your CSS code, you can use our [online CSS compressor and optimizer](#) based on csstidy. If you want to create a linear or radial gradient as background or border, check our [CSS Gradient Generator](#).

Hey! You found this booklet interesting? Support Converting Colors with the new Membership Option!

The pro membership hides all ads, plus gives you double the colors in the color bucket, and more awesome pro features!

[Learn more, Memberships starting at \\$2.50/m!](#)

**Follow me
on Twitter!**

@ConvertingColor