

Converting Colors

Decimal(4003077)

Have a look what the booklet for
Decimal(4003077) contains.

Decimal(4003077)	3
<i>Conversions</i>	4
<i>Details</i>	6
<i>Harmonies</i>	11
<i>Previews</i>	23
<i>Color Blindness Simulation</i>	26
<i>CSS Examples</i>	28

Color

Decimal(4003077)

Conversions

Conversions Part 1

Format	Color
Hex	3D1505
RGB	61, 21, 5
RGB Percent	24%, 8%, 2%
CMY	0.7608, 0.9176, 0.9804
CMYK	0.00, 0.66, 0.92, 0.76
HSL	17°, 85%, 13%
HSV	17°, 92%, 24%
XYZ	2.2200, 1.5394, 0.3237
YIQ	31.1360, 28.9760, 3.5040

Conversions

Conversions Part 2

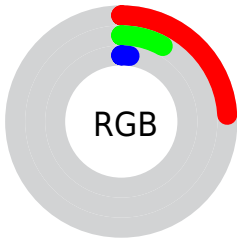
Format	Color
R_{YB}	61, 27, 5
Decimal	4003077
CIE _{Lab}	12.86, 18.54, 17.54
CIE _{LCh}	13, 25.523, 43.398
Yxy	1.5394, 0.5437, 0.3770
Android (android.graphics.Color)	4282193157 (0xFF3D1505)
YUV	31.1360, -12.8850, 26.1907
Hunter-Lab	12.4072, 10.2265, 7.1382

Details

The Decimal color **4003077** is a dark color, and the websafe version is hex **330000**. A complement of this color would be **339261**, and the grayscale version is **2039583**.

A 20% lighter version of the original color is **7356723**, and **0** is the 20% darker color. If you saturate the color by 10%, you get **4002048**, and if you desaturate by 10%, it is **4004107**.

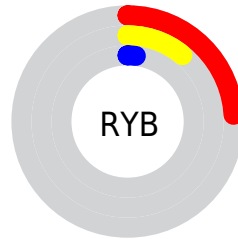
Distribution



Red (24%)

Green (8%)

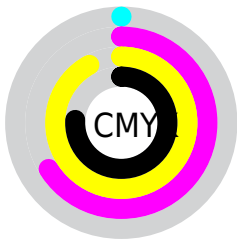
Blue (2%)



Red (24%)

Yellow (11%)

Blue (2%)

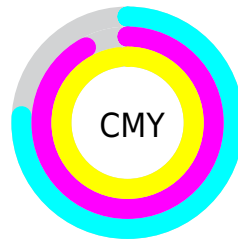


Cyan (0%)

Magenta (66%)

Yellow (92%)

Black (76%)



Cyan (76%)

Magenta (92%)

Yellow (98%)

Brightness & Saturation Gradients

These gradients show how the Decimal color 4003077 changes by changing the brightness by 10 percent. The first figure shows a shift by +10% for each color and the second figure -10%.

Similar to the brightness gradients but the following saturation gradients show a change of the Decimal color 4003077 by changing the saturation by 10% instead.

 4003077

 4003077

 16775910

 2490368

 7356723

 0

 9132361

 10908257

 12749690

 14657172

 16564654

 16768458

 4003077

 4003077

■ 4002048

■ 4004107

■ 4005393

■ 4006423

■ 4007453

■ 4008740

■ 4009770

■ 4011056

■ 4012086

■ 4013116

Harmonies

Analogous

The Analogous color harmony consists of three colors that are next to each other on the color wheel.



4263706



4003077



3349760

Triad

The Triadic color harmony groups three colors that are evenly spaced from another and form a triangle on the color wheel.



4003077



10518



598340

Complementary

The Complementary color scheme is a pair of colors which are on the opposite of each other on the color wheel.



4003077



339261

Split Complementary

Split-complementary colors differ from the complementary color scheme. The scheme consists of three colors, the original color and two neighbors of the complement color.



9795



4003077



10537

Square

The Square scheme is like the rectangle color scheme, but the four colors are evenly spaced on the color wheel.



4003077



1058560



10553



2890043

Rectangle

The Rectangle color scheme consists of four colors that form a rectangle on the color wheel.



4003077



2695424



10553



9029

Sweetspot

The Sweet Spot groups the original color and five complimentary colors.



4003077



5193529



3999021



2694939



11053224



2697513

Same Dimension

The Same Dimension uses a secret algorithm to generate beautiful new colors.



4003077



5183232



4010245



2038812



6167296



14565120

Inverse Universe

The Inverse Universe completely reimagines the original color for something new.



339261



14415



332093



1842719



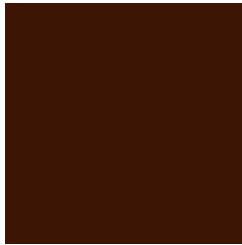
17246



40670

Previews

White Background



This preview shows how the Decimal color 4003077 looks on a white background.

Color Contrast Check

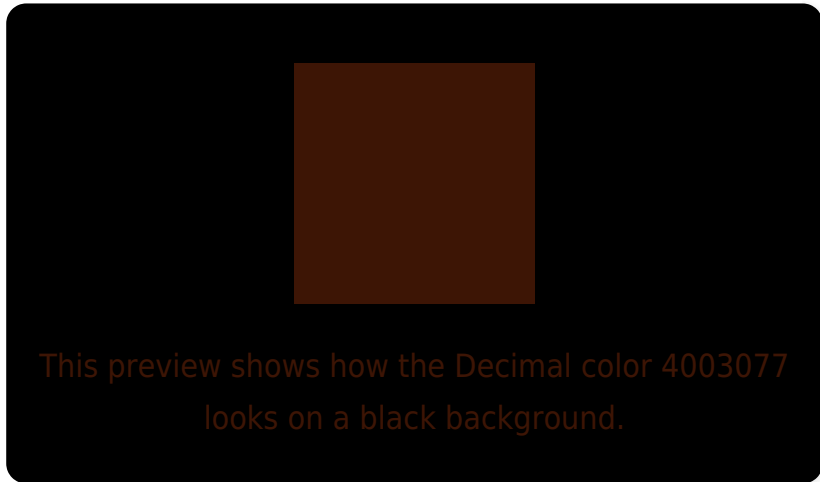
Large Text (above 18pt) WCAG AA ✓ Pass

Any Text WCAG AA ✓ Pass

Large Text (above 18pt) WCAG AAA ✓ Pass

Any Text WCAG AAA ✓ Pass

Black Background



Color Contrast Check

Large Text (above 18pt) WCAG AA × Fail

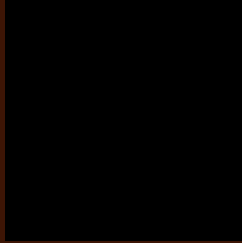
Any Text WCAG AA × Fail

Large Text (above 18pt) WCAG AAA × Fail

Any Text WCAG AAA × Fail

If you want to check with other color combinations, try the [Color Contrast Checker](#).

Decimal 4003077 Background



This preview shows how black text looks on a background with the Decimal color 4003077.

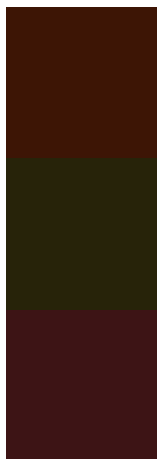


This preview shows how white text looks on a background with the Decimal color 4003077.

Color Blindness Simulation

Color vision deficiency is a very complex topic, and I could not describe the different causes any better than Wikipedia does, so if you want to learn more, you should check out their [article about color blindness](#).

Dichromacy



Original Color
4003077

Protanopia
2564873

Tritanopia
4002837

Trichromacy



Original Color
4003077

Protanomaly
3087880

Tritanomaly
4002831

Monochromacy



Original Color
4003077

Achromatopsia
2039583

Achromatomaly
2759446

CSS Examples

Text

The CSS property to change the color of the text to Decimal 4003077 is called "color". The color property can be set on classes, ids or directly on the HTML element.

This example shows how text in the color #3D1505 looks like.

```
.text, #text, p{  
    color:#3D1505  
}
```

If you want to add a text shadow in that color use the text-shadow property, you can generate a text shadow directly with our [CSS Text Shadow Generator](#).

Here you see how black text with a 4 pixel #3D1505 colored shadow looks like.

```
.shadow{ text-shadow: 4px 4px 2px #3D1505
}
```

Border

The CSS property to change the border of an element to Decimal 4003077 is called "border". The border property can be set on classes, ids or directly on the HTML element.

This example shows the color as border, it can be applied via the CSS property "border" or "border-color".

```
.border, #border, table{ border:4px solid
#3D1505 }
```

If only the border color should be changed use the property `border-color`.

```
.border{ border-color:#3D1505 }
```

If you want to add a box shadow in that color use:

Here you see how a box with a 4 pixel #3D1505 colored shadow looks like.

```
.boxshadow{ -moz-box-shadow:4px 4px 4px  
4px #3D1505; -webkit-box-shadow:4px 4px  
4px 4px #3D1505; box-shadow:4px 4px 4px  
4px #3D1505 }
```

Background

The CSS property to change the background color of an element to Decimal 4003077 is called "background". The background property can be set on classes, ids or directly on the HTML element.

```
.background, #background, body{  
background:#3D1505 }
```

If only the background color should be changed can be used:

```
.background{ background-color:#3D1505 }
```

This example shows the color as background, it is applied via the CSS property "background".

To optimize and compress your CSS code, you can use our [online CSS compressor and optimizer](#) based on csstidy. If you want to create a linear or radial gradient as background or border, check our [CSS Gradient Generator](#).

Hey! You found this booklet
interesting? Support Converting
Colors with the new Membership
Option!

The pro membership hides all ads, plus gives you
double the colors in the color bucket, and more
awesome pro features!

[Learn more, Memberships starting at \\$2.50/m!](#)

**Follow me
on Twitter!**

@ConvertingColor