

Converting Colors

Decimal(4006173)

Have a look what the booklet for
Decimal(4006173) contains.

Decimal(4006173)	3
<i>Conversions</i>	4
<i>Details</i>	6
<i>Harmonies</i>	11
<i>Previews</i>	23
<i>Color Blindness Simulation</i>	26
<i>CSS Examples</i>	29

Color

Decimal(4006173)

Conversions

Conversions Part 1

Format	Color
Hex	3D211D
RGB	61, 33, 29
RGB Percent	24%, 13%, 11%
CMY	0.7608, 0.8706, 0.8863
CMYK	0.00, 0.46, 0.52, 0.76
HSL	8°, 36%, 18%
HSV	8°, 52%, 24%
XYZ	2.6901, 2.1685, 1.4392
YIQ	40.9160, 17.9720, 4.6920

Conversions

Conversions Part 2

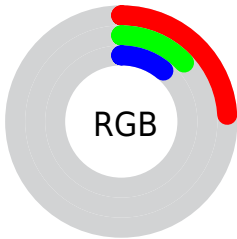
Format	Color
RYB	61, 34, 29
Decimal	4006173
CIELab	16.35, 12.94, 8.48
CIELCh	16, 15.477, 33.243
Yxy	2.1685, 0.4271, 0.3443
Android (android.graphics.Color)	4282196253 (0xFF3D211D)
YUV	40.9160, -5.8746, 17.6137
Hunter-Lab	14.7259, 6.8377, 4.5136

Details

The Decimal color **4006173** is a dark color, and the websafe version is hex **663333**. A complement of this color would be **1915197**, and the grayscale version is **2697513**.

A 20% lighter version of the original color is **7229000**, and **0** is the 20% darker color. If you saturate the color by 10%, you get **4004887**, and if you desaturate by 10%, it is **4007459**.

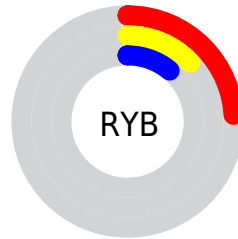
Distribution



Red (24%)

Green (13%)

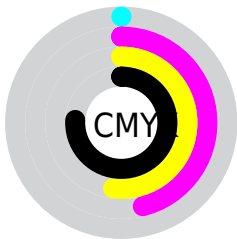
Blue (11%)



Red (24%)

Yellow (13%)

Blue (11%)

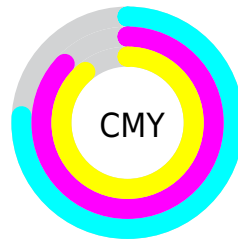


Cyan (0%)

Magenta (46%)

Yellow (52%)

Black (76%)



Cyan (76%)

Magenta (87%)

Yellow (89%)

Brightness & Saturation Gradients

These gradients show how the Decimal color 4006173 changes by changing the brightness by 10 percent. The first figure shows a shift by +10% for each color and the second figure -10%.

Similar to the brightness gradients but the following saturation gradients show a change of the Decimal color 4006173 by changing the saturation by 10% instead.



4006173



4006173

16777215



2558979



7229000



0



8939104



10715001



12491155



14333101



16240585



16772069



4006173



4006173

■ 4004887

■ 4007459

■ 4003345

■ 4009001

■ 4002059

■ 4010287

■ 4000773

■ 4011573

■ 3999744

■ 4013116

■ 4014402

■ 4015688

■ 4017230

■ 4018516

Harmonies

Analogous

The Analogous color harmony consists of three colors that are next to each other on the color wheel.



4005928



4006173



3679253

Triad

The Triadic color harmony groups three colors that are evenly spaced from another and form a triangle on the color wheel.



4006173



1387806



1714494

Complementary

The Complementary color scheme is a pair of colors which are on the opposite of each other on the color wheel.



4006173



1915197

Split Complementary

Split-complementary colors differ from the complementary color scheme. The scheme consists of three colors, the original color and two neighbors of the complement color.



273468



4006173



273961

Square

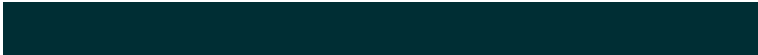
The Square scheme is like the rectangle color scheme, but the four colors are evenly spaced on the color wheel.



4006173



2304790



11828



2827579

Rectangle

The Rectangle color scheme consists of four colors that form a rectangle on the color wheel.



4006173



3286802



11828



1255998

Sweetspot

The Sweet Spot groups the original color and five complimentary colors.



4006173



5194818



4005177



2695713



11053224



2697513

Same Dimension

The Same Dimension uses a secret algorithm to generate beautiful new colors.



4006173



5186333



4010269



2038812



6163456



14556160

Inverse Universe

The Inverse Universe completely reimagines the original color for something new.



1915197



1919311



1911101



1842719



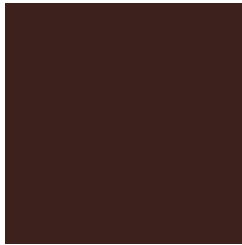
21342



49886

Previews

White Background



This preview shows how the Decimal color 4006173 looks on a white background.

Color Contrast Check

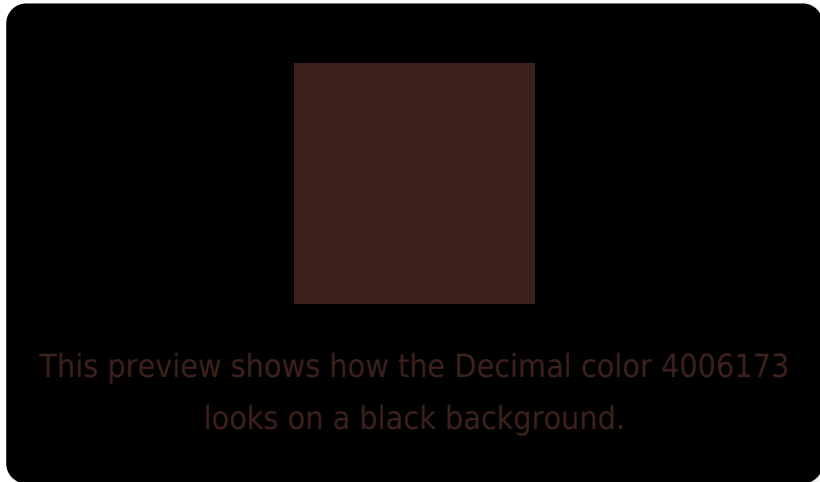
Large Text (above 18pt) WCAG AA ✓ Pass

Any Text WCAG AA ✓ Pass

Large Text (above 18pt) WCAG AAA ✓ Pass

Any Text WCAG AAA ✓ Pass

Black Background



Color Contrast Check

Large Text (above 18pt) WCAG AA × Fail

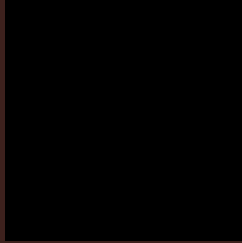
Any Text WCAG AA × Fail

Large Text (above 18pt) WCAG AAA × Fail

Any Text WCAG AAA × Fail

If you want to check with other color combinations, try the [Color Contrast Checker](#).

Decimal 4006173 Background



This preview shows how black text looks on a background with the Decimal color 4006173.



This preview shows how white text looks on a background with the Decimal color 4006173.

Color Blindness Simulation

Color vision deficiency is a very complex topic, and I could not describe the different causes any better than Wikipedia does, so if you want to learn more, you should check out their [article about color blindness](#).

Dichromacy



Original Color
4006173

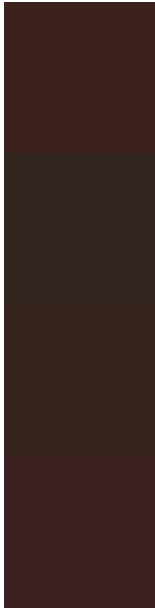
Protanopia
2894113

Deuteranopia
3221276



Tritanopia
4005923

Trichromacy



Original Color

4006173

Protanomaly

3286560

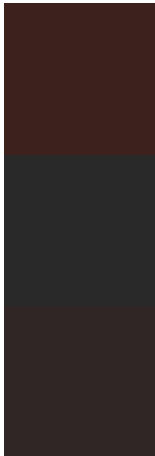
Deuteranomaly

3482908

Tritanomaly

4005921

Monochromacy



Original Color

4006173

Achromatopsia

2697513

Achromatomaly

3155493

CSS Examples

Text

The CSS property to change the color of the text to Decimal 4006173 is called "color". The color property can be set on classes, ids or directly on the HTML element.

This example shows how text in the color #3D211D looks like.

```
.text, #text, p{  
    color:#3D211D  
}
```

If you want to add a text shadow in that color use the text-shadow property, you can generate a text shadow directly with our [CSS Text Shadow Generator](#).

Here you see how black text with a 4 pixel #3D211D colored shadow looks like.

```
.shadow{ text-shadow: 4px 4px 2px #3D211D  
}
```

Border

The CSS property to change the border of an element to Decimal 4006173 is called "border". The border property can be set on classes, ids or directly on the HTML element.

This example shows the color as border, it can be applied via the CSS property "border" or "border-color".

```
.border, #border, table{ border:4px solid  
#3D211D }
```

If only the border color should be changed use the property `border-color`.

```
.border{ border-color:#3D211D }
```

If you want to add a box shadow in that color use:

Here you see how a box with a 4 pixel #3D211D colored shadow looks like.

```
.boxshadow{ -moz-box-shadow:4px 4px 4px  
4px #3D211D; -webkit-box-shadow:4px 4px  
4px 4px #3D211D; box-shadow:4px 4px 4px  
4px #3D211D }
```

Background

The CSS property to change the background color of an element to Decimal 4006173 is called "background". The background property can be set on classes, ids or directly on the HTML element.

```
.background, #background, body{  
background:#3D211D }
```

If only the background color should be changed can be used:

```
.background{ background-color:#3D211D }
```

This example shows the color as background, it is applied via the CSS property "background".

To optimize and compress your CSS code, you can use our [online CSS compressor and optimizer](#) based on csstidy. If you want to create a linear or radial gradient as background or border, check our [CSS Gradient Generator](#).

Hey! You found this booklet interesting? Support Converting Colors with the new Membership Option!

The pro membership hides all ads, plus gives you double the colors in the color bucket, and more awesome pro features!

[Learn more, Memberships starting at \\$2.50/m!](#)

**Follow me
on Twitter!**

@ConvertingColor