

# Converting Colors

Decimal(4073242)

Have a look what the booklet for  
Decimal(4073242) contains.

<b>Decimal(4073242)</b> .....	3
<i><b>Conversions</b></i> .....	4
<i><b>Details</b></i> .....	6
<i><b>Harmonies</b></i> .....	11
<i><b>Previews</b></i> .....	23
<i><b>Color Blindness Simulation</b></i> .....	26
<i><b>CSS Examples</b></i> .....	29

# Color

**Decimal(4073242)**

# Conversions

## Conversions Part 1

Format	Color
Hex	3E271A
RGB	62, 39, 26
RGB Percent	24%, 15%, 10%
CMY	0.7569, 0.8471, 0.8980
CMYK	0.00, 0.37, 0.58, 0.76
HSL	22°, 41%, 17%
HSV	22°, 58%, 24%
XYZ	2.8986, 2.5498, 1.3167
YIQ	44.3950, 17.8810, 0.8330

# Conversions

## Conversions Part 2

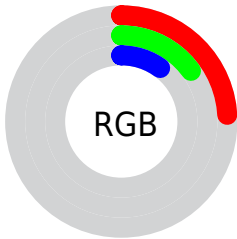
<b>Format</b>	<b>Color</b>
<b>RYB</b>	62, 46, 26
Decimal	4073242
CIELab	18.14, 9.05, 12.96
CIElCh	18, 15.807, 55.075
Yxy	2.5498, 0.4285, 0.3769
Android (android.graphics.Color)	4282263322 (0xFF3E271A)
YUV	44.3950, -9.0687, 15.4396
Hunter-Lab	15.9679, 4.4583, 6.2887

# Details

The Decimal color **4073242** is a dark color, and the websafe version is hex **333333**. A complement of this color would be **1716542**, and the grayscale version is **2894892**.

A 20% lighter version of the original color is **7296069**, and **196608** is the 20% darker color. If you saturate the color by 10%, you get **4072212**, and if you desaturate by 10%, it is **4074272**.

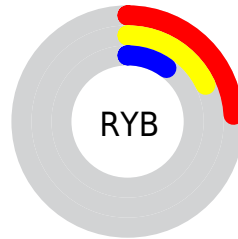
# Distribution



Red (24%)

Green (15%)

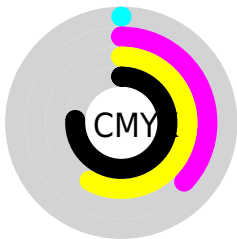
Blue (10%)



Red (24%)

Yellow (18%)

Blue (10%)

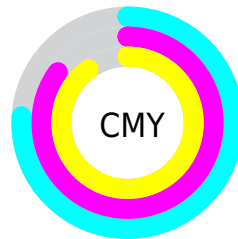


Cyan (0%)

Magenta (37%)

Yellow (58%)

Black (76%)



Cyan (76%)

Magenta (85%)

Yellow (90%)

# Brightness & Saturation Gradients

These gradients show how the Decimal color 4073242 changes by changing the brightness by 10 percent. The first figure shows a shift by +10% for each color and the second figure -10%.

Similar to the brightness gradients but the following saturation gradients show a change of the Decimal color 4073242 by changing the saturation by 10% instead.





4073242



4073242

16777214



2626304



7296069



196608



9006173



0



10782326



12558479



14400426



16307909



16774113



4073242



4073242

■ 4072212

■ 4074272

■ 4071182

■ 4075302

■ 4070151

■ 4076333

■ 4069121

■ 4077363

■ 4068864

■ 4078393

■ 4079423

■ 4080453

■ 4081484

■ 4082514

# Harmonies

## Analogous

The Analogous color harmony consists of three colors that are next to each other on the color wheel.



4334627



4073242



3484437

# Triad

The Triadic color harmony groups three colors that are evenly spaced from another and form a triangle on the color wheel.



4073242



799274



2828865

# Complementary

The Complementary color scheme is a pair of colors which are on the opposite of each other on the color wheel.



4073242



1716542

# Split Complementary

Split-complementary colors differ from the complementary color scheme. The scheme consists of three colors, the original color and two neighbors of the complement color.



1584707



4073242



12854

# Square

The Square scheme is like the rectangle color scheme, but the four colors are evenly spaced on the color wheel.



4073242



1913119



143679



3745337

# Rectangle

The Rectangle color scheme consists of four colors that form a rectangle on the color wheel.



4073242



3026198



143679



2435906



# Sweetspot

The Sweet Spot groups the original color and five complimentary colors.



4073242



5392708



4069937



2696225



11053224



2697513



# Same Dimension

The Same Dimension uses a secret algorithm to generate beautiful new colors.



4073242



5385496



4077850



2039068



6169088



14569472



# Inverse Universe

The Inverse Universe completely reimagines the original color for something new.



1716542



1588562



1711934



1842463



15454

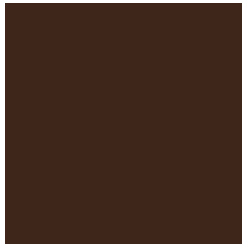


36574



# Previews

## White Background



This preview shows how the Decimal color 4073242 looks on a white background.

## Color Contrast Check

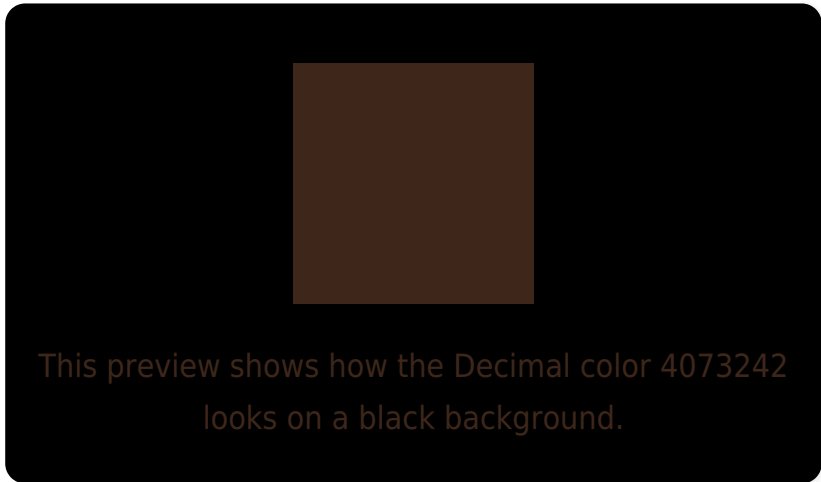
Large Text (above 18pt) WCAG AA ✓ Pass

Any Text WCAG AA ✓ Pass

Large Text (above 18pt) WCAG AAA ✓ Pass

Any Text WCAG AAA ✓ Pass

# Black Background



## Color Contrast Check

Large Text (above 18pt) WCAG AA × Fail

Any Text WCAG AA × Fail

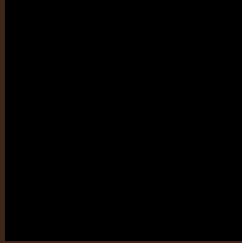
Large Text (above 18pt) WCAG AAA × Fail

Any Text WCAG AAA × Fail

If you want to check with other color combinations, try the [Color Contrast Checker](#).



## Decimal 4073242 Background



This preview shows how black text looks on a background with the Decimal color 4073242.

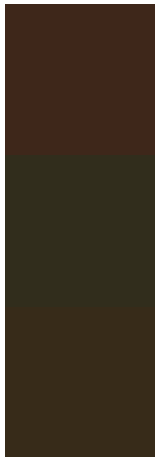


This preview shows how white text looks on a background with the Decimal color 4073242.

# Color Blindness Simulation

Color vision deficiency is a very complex topic, and I could not describe the different causes any better than Wikipedia does, so if you want to learn more, you should check out their [article about color blindness](#).

## Dichromacy



**Original Color**  
4073242

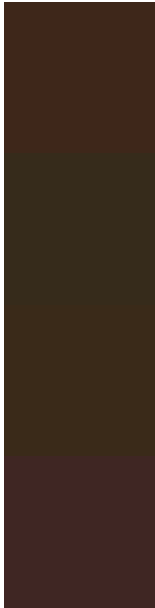
**Protanopia**  
3222812

**Deuteranopia**  
3615513



**Tritanopia**  
4138280

# Trichromacy



**Original Color**

4073242

**Protanomaly**

3549979

**Deuteranomaly**

3811865

**Tritanomaly**

4138531

# Monochromacy



**Original Color**

4073242

**Achromatopsia**

2894892

**Achromatomaly**

3353125

# CSS Examples

## Text

The CSS property to change the color of the text to Decimal 4073242 is called "color". The color property can be set on classes, ids or directly on the HTML element.

This example shows how text in the color #3E271A looks like.

```
.text, #text, p{  
    color:#3E271A  
}
```

If you want to add a text shadow in that color use the text-shadow property, you can generate a text shadow directly with our [CSS Text Shadow Generator](#).

Here you see how black text with a 4 pixel #3E271A colored shadow looks like.

```
.shadow{ text-shadow: 4px 4px 2px #3E271A
}
```

## Border

The CSS property to change the border of an element to Decimal 4073242 is called "border". The border property can be set on classes, ids or directly on the HTML element.

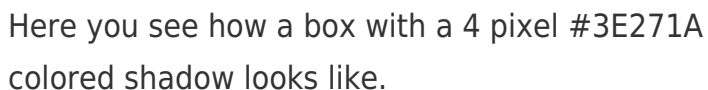
This example shows the color as border, it can be applied via the CSS property "border" or "border-color".

```
.border, #border, table{ border:4px solid
#3E271A }
```

If only the border color should be changed use the property `border-color`.

```
.border{ border-color:#3E271A }
```

If you want to add a box shadow in that color use:



Here you see how a box with a 4 pixel #3E271A colored shadow looks like.

```
.boxshadow{ -moz-box-shadow:4px 4px 4px  
4px #3E271A; -webkit-box-shadow:4px 4px  
4px 4px #3E271A; box-shadow:4px 4px 4px  
4px #3E271A }
```

# Background

The CSS property to change the background color of an element to Decimal 4073242 is called "background". The background property can be set on classes, ids or directly on the HTML element.

```
.background, #background, body{  
background:#3E271A }
```

If only the background color should be changed can be used:

```
.background{ background-color:#3E271A }
```

This example shows the color as background, it is applied via the CSS property "background".

To optimize and compress your CSS code, you can use our [online CSS compressor and optimizer](#) based on csstidy. If you want to create a linear or radial gradient as background or border, check our [CSS Gradient Generator](#).



Hey! You found this booklet interesting? Support Converting Colors with the new Membership Option!

The pro membership hides all ads, plus gives you double the colors in the color bucket, and more awesome pro features!

**[Learn more, Memberships starting at \\$2.50/m!](#)**

**Follow me  
on Twitter!**

@ConvertingColor