

Converting Colors

Decimal(4136989)

Have a look what the booklet for
Decimal(4136989) contains.

Decimal(4136989)	3
<i>Conversions</i>	4
<i>Details</i>	6
<i>Harmonies</i>	11
<i>Previews</i>	23
<i>Color Blindness Simulation</i>	26
<i>CSS Examples</i>	29

Color

Decimal(4136989)

Conversions

Conversions Part 1

Format	Color
Hex	3F201D
RGB	63, 32, 29
RGB Percent	25%, 13%, 11%
CMY	0.7529, 0.8745, 0.8863
CMYK	0.00, 0.49, 0.54, 0.75
HSL	5°, 37%, 18%
HSV	5°, 54%, 25%
XYZ	2.7882, 2.1785, 1.4359
YIQ	40.9270, 19.4390, 5.6390

Conversions

Conversions Part 2

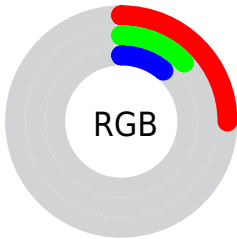
Format	Color
R_{YB}	63, 32, 29
Decimal	4136989
CIE Lab	16.40, 14.56, 8.61
CIE LCh	16, 16.914, 30.583
Yxy	2.1785, 0.4355, 0.3403
Android (android.graphics.Color)	4282327069 (0xFF3F201D)
YUV	40.9270, -5.8800, 19.3580
Hunter-Lab	14.7597, 7.8900, 4.5636

Details

The Decimal color **4136989** is a dark color, and the websafe version is hex **663333**. A complement of this color would be **1915967**, and the grayscale version is **2697513**.

A 20% lighter version of the original color is **7425352**, and **0** is the 20% darker color. If you saturate the color by 10%, you get **4135447**, and if you desaturate by 10%, it is **4138531**.

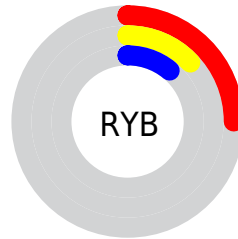
Distribution



Red (25%)

Green (13%)

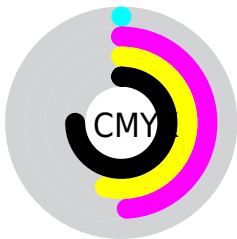
Blue (11%)



Red (25%)

Yellow (13%)

Blue (11%)

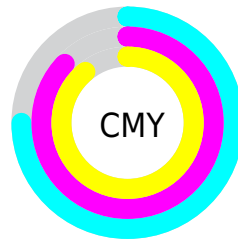


Cyan (0%)

Magenta (49%)

Yellow (54%)

Black (75%)



Cyan (75%)

Magenta (87%)

Yellow (89%)

Brightness & Saturation Gradients

These gradients show how the Decimal color 4136989 changes by changing the brightness by 10 percent. The first figure shows a shift by +10% for each color and the second figure -10%.

Similar to the brightness gradients but the following saturation gradients show a change of the Decimal color 4136989 by changing the saturation by 10% instead.



4136989



4136989

16777215



2689795



7425352



0



9135456



10845817



12687507



14529453



16436937



16771813



4136989



4136989

■ 4135447

■ 4138531

■ 4134160

■ 4139818

■ 4132618

■ 4141360

■ 4131076

■ 4142902

■ 4130304

■ 4144445

■ 4145731

■ 4147273

■ 4148815

■ 4150358

Harmonies

Analogous

The Analogous color harmony consists of three colors that are next to each other on the color wheel.



4136745



4136989



3744788

Triad

The Triadic color harmony groups three colors that are evenly spaced from another and form a triangle on the color wheel.



4136989



1322524



1387073

Complementary

The Complementary color scheme is a pair of colors which are on the opposite of each other on the color wheel.



4136989



1915967

Split Complementary

Split-complementary colors differ from the complementary color scheme. The scheme consists of three colors, the original color and two neighbors of the complement color.



11581



4136989



12072

Square

The Square scheme is like the rectangle color scheme, but the four colors are evenly spaced on the color wheel.



4136989



2305043



12084



2762045

Rectangle

The Rectangle color scheme consists of four colors that form a rectangle on the color wheel.



4136989



3352336



12084



797504

Sweetspot

The Sweet Spot groups the original color and five complimentary colors.



4136989



5391941



4136252



2695713



11053224



2697513

Same Dimension

The Same Dimension uses a secret algorithm to generate beautiful new colors.



4136989



5382429



4141341



2038812



6162432



14554112

Inverse Universe

The Inverse Universe completely reimagines the original color for something new.



1915967



1920338



1911615



1842719



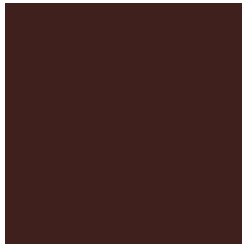
22110



51934

Previews

White Background



This preview shows how the Decimal color 4136989 looks on a white background.

Color Contrast Check

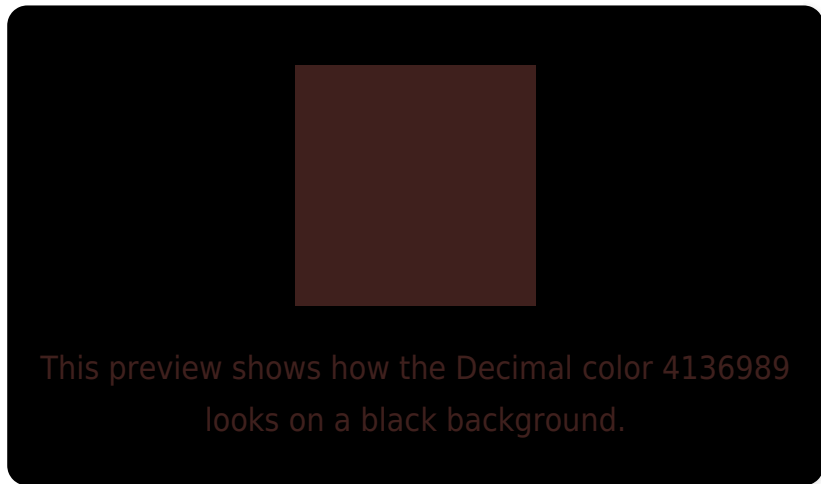
Large Text (above 18pt) WCAG AA ✓ Pass

Any Text WCAG AA ✓ Pass

Large Text (above 18pt) WCAG AAA ✓ Pass

Any Text WCAG AAA ✓ Pass

Black Background



Color Contrast Check

Large Text (above 18pt) WCAG AA × Fail

Any Text WCAG AA × Fail

Large Text (above 18pt) WCAG AAA × Fail

Any Text WCAG AAA × Fail

If you want to check with other color combinations, try the [Color Contrast Checker](#).

Decimal 4136989 Background



This preview shows how black text looks on a background with the Decimal color 4136989.

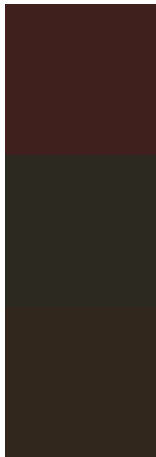


This preview shows how white text looks on a background with the Decimal color 4136989.

Color Blindness Simulation

Color vision deficiency is a very complex topic, and I could not describe the different causes any better than Wikipedia does, so if you want to learn more, you should check out their [article about color blindness](#).


Dichromacy



Original Color
4136989

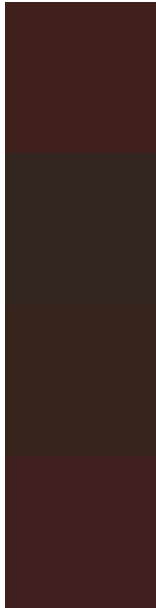
Protanopia
2894113

Deuteranopia
3221276



Tritanopia
4136738

Trichromacy



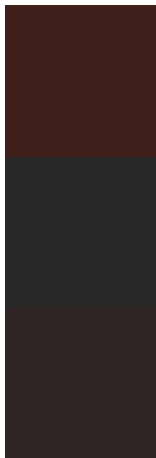
Original Color
4136989

Protanomaly
3352096

Deuteranomaly
3548188

Tritanomaly
4136736

Monochromacy



Original Color
4136989

Achromatopsia
2697513

Achromatomaly
3221029

CSS Examples

Text

The CSS property to change the color of the text to Decimal 4136989 is called "color". The color property can be set on classes, ids or directly on the HTML element.

This example shows how text in the color #3F201D looks like.

```
.text, #text, p{  
    color:#3F201D  
}
```

If you want to add a text shadow in that color use the text-shadow property, you can generate a text shadow directly with our [CSS Text Shadow Generator](#).

Here you see how black text with a 4 pixel #3F201D colored shadow looks like.

```
.shadow{ text-shadow: 4px 4px 2px #3F201D
}
```

Border

The CSS property to change the border of an element to Decimal 4136989 is called "border". The border property can be set on classes, ids or directly on the HTML element.

This example shows the color as border, it can be applied via the CSS property "border" or "border-color".

```
.border, #border, table{ border:4px solid
#3F201D }
```

If only the border color should be changed use the property `border-color`.

```
.border{ border-color:#3F201D }
```

If you want to add a box shadow in that color use:

Here you see how a box with a 4 pixel #3F201D colored shadow looks like.

```
.boxshadow{ -moz-box-shadow:4px 4px 4px  
4px #3F201D; -webkit-box-shadow:4px 4px  
4px 4px #3F201D; box-shadow:4px 4px 4px  
4px #3F201D }
```

Background

The CSS property to change the background color of an element to Decimal 4136989 is called "background". The background property can be set on classes, ids or directly on the HTML element.

```
.background, #background, body{  
background:#3F201D }
```

If only the background color should be changed can be used:

```
.background{ background-color:#3F201D }
```

This example shows the color as background, it is applied via the CSS property "background".

To optimize and compress your CSS code, you can use our [online CSS compressor and optimizer](#) based on csstidy. If you want to create a linear or radial gradient as background or border, check our [CSS Gradient Generator](#).

Hey! You found this booklet interesting? Support Converting Colors with the new Membership Option!

The pro membership hides all ads, plus gives you double the colors in the color bucket, and more awesome pro features!

[Learn more, Memberships starting at \\$2.50/m!](#)

**Follow me
on Twitter!**

@ConvertingColor