

Converting Colors

Decimal(4138279)

Have a look what the booklet for
Decimal(4138279) contains.

Decimal(4138279)	3
<i>Conversions</i>	4
<i>Details</i>	6
<i>Harmonies</i>	11
<i>Previews</i>	23
<i>Color Blindness Simulation</i>	26
<i>CSS Examples</i>	29

Color

Decimal(4138279)

Conversions

Conversions Part 1

Format	Color
Hex	3F2527
RGB	63, 37, 39
RGB Percent	25%, 15%, 15%
CMY	0.7529, 0.8549, 0.8471
CMYK	0.00, 0.41, 0.38, 0.75
HSL	355°, 26%, 20%
HSV	355°, 41%, 25%
XYZ	3.0777, 2.5264, 2.2449
YIQ	45.0020, 14.8540, 6.1340

Conversions

Conversions Part 2

Format	Color
R_{YB}	63, 37, 39
Decimal	4138279
CIE _{Lab}	18.04, 12.65, 3.84
CIE _{LCh}	18, 13.225, 16.898
Yxy	2.5264, 0.3921, 0.3219
Android (android.graphics.Color)	4282328359 (0xFF3F2527)
YUV	45.0020, -2.9590, 15.7842
Hunter-Lab	15.8946, 6.7475, 2.7523

Details

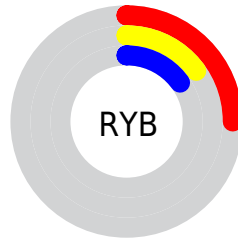
The Decimal color **4138279** is a dark color, and the websafe version is hex **333333**. A complement of this color would be **2441021**, and the grayscale version is **2960685**.

A 20% lighter version of the original color is **7361108**, and **720896** is the 20% darker color. If you saturate the color by 10%, you get **4136737**, and if you desaturate by 10%, it is **4139821**.

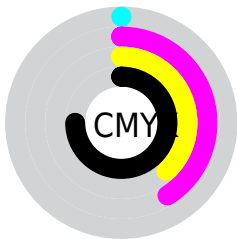
Distribution



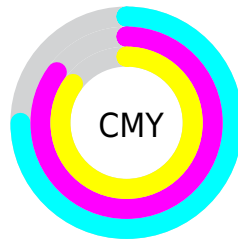
- Red (25%)
- Green (15%)
- Blue (15%)



- Red (25%)
- Yellow (15%)
- Blue (15%)



- Cyan (0%)
- Magenta (41%)
- Yellow (38%)
- Black (75%)



- Cyan (75%)
- Magenta (85%)
- Yellow (85%)

Brightness & Saturation Gradients

These gradients show how the Decimal color 4138279 changes by changing the brightness by 10 percent. The first figure shows a shift by +10% for each color and the second figure -10%.

Similar to the brightness gradients but the following saturation gradients show a change of the Decimal color 4138279 by changing the saturation by 10% instead.



4138279



4138279

16777215



2625810



7361108



720896



9005676



0



10781829



12557983



14399930



16307414



16773618



4138279



4138279

■ 4136737

■ 4139821

■ 4134939

■ 4141619

■ 4133398

■ 4143160

■ 4131856

■ 4144702

■ 4130314

■ 4146500

■ 4128773

■ 4148042

■ 4149584

■ 4151126

■ 4152923

Harmonies

Analogous

The Analogous color harmony consists of three colors that are next to each other on the color wheel.



3941681



4138279



4007711

Triad

The Triadic color harmony groups three colors that are evenly spaced from another and form a triangle on the color wheel.



4138279



2240543



1650238

Complementary

The Complementary color scheme is a pair of colors which are on the opposite of each other on the color wheel.



4138279



2441021

Split Complementary

Split-complementary colors differ from the complementary color scheme. The scheme consists of three colors, the original color and two neighbors of the complement color.



798778



4138279



1519911

Square

The Square scheme is like the rectangle color scheme, but the four colors are evenly spaced on the color wheel.



4138279



2960666



864561



2566974

Rectangle

The Rectangle color scheme consists of four colors that form a rectangle on the color wheel.



4138279



3746075



864561



1322813

Sweetspot

The Sweet Spot groups the original color and five complimentary colors.



4138279



5392457



4007231



2695972



11053224



2697513

Same Dimension

The Same Dimension uses a secret algorithm to generate beautiful new colors.



4138279



5384492



4141093



2038812



6160391



14549009

Inverse Universe

The Inverse Universe completely reimagines the original color for something new.



4138279



5384492



2438207



2038812



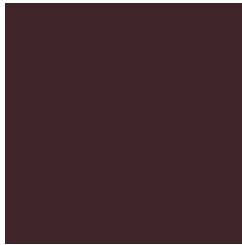
6160391



14549009

Previews

White Background



This preview shows how the Decimal color 4138279 looks on a white background.

Color Contrast Check

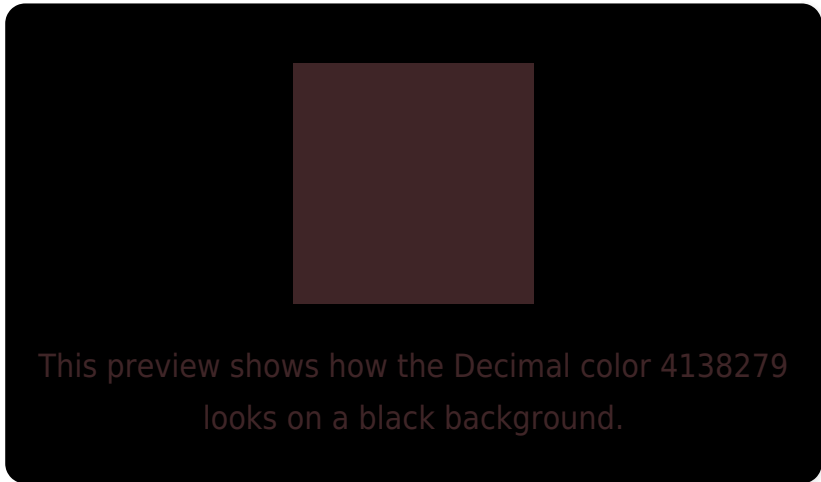
Large Text (above 18pt) WCAG AA ✓ Pass

Any Text WCAG AA ✓ Pass

Large Text (above 18pt) WCAG AAA ✓ Pass

Any Text WCAG AAA ✓ Pass

Black Background



Color Contrast Check

Large Text (above 18pt) WCAG AA × Fail

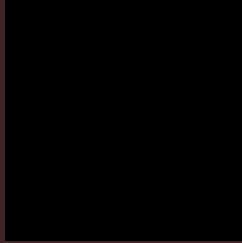
Any Text WCAG AA × Fail

Large Text (above 18pt) WCAG AAA × Fail

Any Text WCAG AAA × Fail

If you want to check with other color combinations, try the [Color Contrast Checker](#).

Decimal 4138279 Background



This preview shows how black text looks on a background with the Decimal color 4138279.

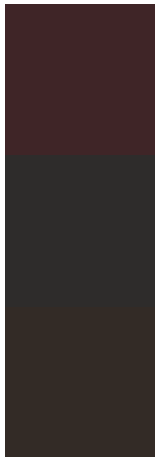


This preview shows how white text looks on a background with the Decimal color 4138279.

Color Blindness Simulation

Color vision deficiency is a very complex topic, and I could not describe the different causes any better than Wikipedia does, so if you want to learn more, you should check out their [article about color blindness](#).

Dichromacy



Original Color
4138279

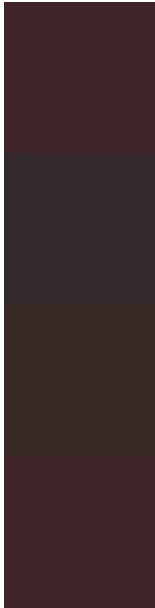
Protanopia
3025963

Deuteranopia
3353382



Tritanopia
4138280

Trichromacy



Original Color

4138279

Protanomaly

3418410

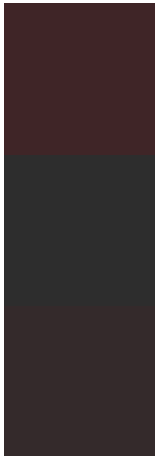
Deuteranomaly

3615014

Tritanomaly

4138280

Monochromacy



Original Color

4138279

Achromatopsia

2960685

Achromatomaly

3418667

CSS Examples

Text

The CSS property to change the color of the text to Decimal 4138279 is called "color". The color property can be set on classes, ids or directly on the HTML element.

This example shows how text in the color #3F2527 looks like.

```
.text, #text, p{  
    color:#3F2527  
}
```

If you want to add a text shadow in that color use the text-shadow property, you can generate a text shadow directly with our [CSS Text Shadow Generator](#).

Here you see how black text with a 4 pixel #3F2527 colored shadow looks like.

```
.shadow{ text-shadow: 4px 4px 2px #3F2527
}
```

Border

The CSS property to change the border of an element to Decimal 4138279 is called "border". The border property can be set on classes, ids or directly on the HTML element.

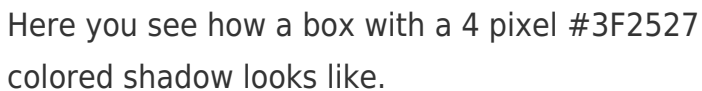
This example shows the color as border, it can be applied via the CSS property "border" or "border-color".

```
.border, #border, table{ border:4px solid
#3F2527 }
```

If only the border color should be changed use the property `border-color`.

```
.border{ border-color:#3F2527 }
```

If you want to add a box shadow in that color use:



Here you see how a box with a 4 pixel #3F2527 colored shadow looks like.

```
.boxshadow{ -moz-box-shadow:4px 4px 4px  
4px #3F2527; -webkit-box-shadow:4px 4px  
4px 4px #3F2527; box-shadow:4px 4px 4px  
4px #3F2527 }
```

Background

The CSS property to change the background color of an element to Decimal 4138279 is called "background". The background property can be set on classes, ids or directly on the HTML element.

```
.background, #background, body{  
background:#3F2527 }
```

If only the background color should be changed can be used:

```
.background{ background-color:#3F2527 }
```

This example shows the color as background, it is applied via the CSS property "background".

To optimize and compress your CSS code, you can use our [online CSS compressor and optimizer](#) based on csstidy. If you want to create a linear or radial gradient as background or border, check our [CSS Gradient Generator](#).

Hey! You found this booklet interesting? Support Converting Colors with the new Membership Option!

The pro membership hides all ads, plus gives you double the colors in the color bucket, and more awesome pro features!

[Learn more, Memberships starting at \\$2.50/m!](#)

**Follow me
on Twitter!**

@ConvertingColor