

# Converting Colors

Decimal(4138793)

Have a look what the booklet for  
Decimal(4138793) contains.

|  |    |
|--|----|
| <b>Decimal(4138793)</b> .....                  | 3  |
| <i><b>Conversions</b></i> .....                | 4  |
| <i><b>Details</b></i> .....                    | 6  |
| <i><b>Harmonies</b></i> .....                  | 11 |
| <i><b>Previews</b></i> .....                   | 23 |
| <i><b>Color Blindness Simulation</b></i> ..... | 26 |
| <i><b>CSS Examples</b></i> .....               | 29 |

# Color

**Decimal(4138793)**

# Conversions

## Conversions Part 1

| Format      | Color                    |
|-------------|--------------------------|
| Hex         | 3F2729                   |
| RGB         | 63, 39, 41               |
| RGB Percent | 25%, 15%, 16%            |
| CMY         | 0.7529, 0.8471, 0.8392   |
| CMYK        | 0.00, 0.38, 0.35, 0.75   |
| HSL         | 355°, 24%, 20%           |
| HSV         | 355°, 38%, 25%           |
| XYZ         | 3.1757, 2.6679, 2.4454   |
| YIQ         | 46.4040, 13.6620, 5.7100 |

# Conversions

## Conversions Part 2

| <b>Format</b>                       | <b>Color</b>                 |
|-------------------------------------|------------------------------|
| <b>R<sub>YB</sub></b>               | 63, 39, 41                   |
| Decimal                             | 4138793                      |
| CIE <sub>Lab</sub>                  | 18.66, 11.64, 3.33           |
| CIE <sub>LCh</sub>                  | 19, 12.105, 15.984           |
| Yxy                                 | 2.6679, 0.3831,<br>0.3219    |
| Android<br>(android.graphics.Color) | 4282328873<br>(0xFF3F2729)   |
| YUV                                 | 46.4040, -2.6642,<br>14.5547 |
| Hunter-Lab                          | 16.3337, 6.1207,<br>2.5570   |

# Details

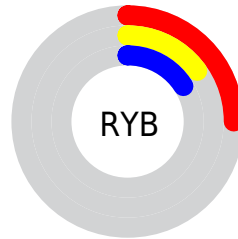
The Decimal color **4138793** is a dark color, and the websafe version is hex **333333**. A complement of this color would be **2572093**, and the grayscale version is **3026478**.

A 20% lighter version of the original color is **7361622**, and **983040** is the 20% darker color. If you saturate the color by 10%, you get **4137251**, and if you desaturate by 10%, it is **4140335**.

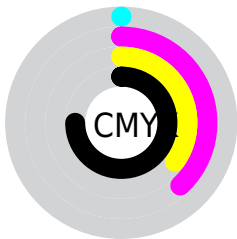
# Distribution



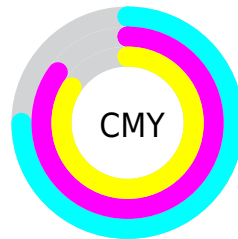
- Red (25%)
- Green (15%)
- Blue (16%)



- Red (25%)
- Yellow (15%)
- Blue (16%)



- Cyan (0%)
- Magenta (38%)
- Yellow (35%)
- Black (75%)



- Cyan (75%)
- Magenta (85%)
- Yellow (84%)

# Brightness & Saturation Gradients

These gradients show how the Decimal color 4138793 changes by changing the brightness by 10 percent. The first figure shows a shift by +10% for each color and the second figure -10%.

Similar to the brightness gradients but the following saturation gradients show a change of the Decimal color 4138793 by changing the saturation by 10% instead.



■ 4138793

■ 4138793

16777215

■ 2626069

■ 7361622

■ 983040

■ 9006446

■ 0

■ 10782344

■ 12558498

■ 14400445

■ 16308185

■ 16774133

■ 4138793

■ 4138793

■ 4137251

■ 4140335

■ 4135453

■ 4142133

■ 4133912

■ 4143674

■ 4132370

■ 4145216

■ 4130572

■ 4147014

■ 4129030

■ 4148556

■ 4128773

■ 4150097

■ 4151639

■ 4153437

# Harmonies

## Analogous

The Analogous color harmony consists of three colors that are next to each other on the color wheel.



3942194



4138793



4008225

# Triad

The Triadic color harmony groups three colors that are evenly spaced from another and form a triangle on the color wheel.



4138793



2437409



1847102

# Complementary

The Complementary color scheme is a pair of colors which are on the opposite of each other on the color wheel.



4138793



2572093

# Split Complementary

Split-complementary colors differ from the complementary color scheme. The scheme consists of three colors, the original color and two neighbors of the complement color.



1192250



4138793



1782313

# Square

The Square scheme is like the rectangle color scheme, but the four colors are evenly spaced on the color wheel.



4138793



3091996



1258034



2698558

# Rectangle

The Rectangle color scheme consists of four colors that form a rectangle on the color wheel.



4138793



3811870



1258034



1585213



# Sweetspot

The Sweet Spot groups the original color and five complimentary colors.



4138793



5392713



4007743



2695972



11053224



2697513



# Same Dimension

The Same Dimension uses a secret algorithm to generate beautiful new colors.



4138793



5385263



4141351



2038812



6160392



14549010



# Inverse Universe

The Inverse Universe completely reimagines the original color for something new.



4138793



5385263



2569535



2038812



6160392

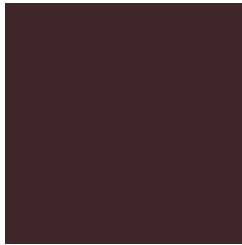


14549010



# Previews

## White Background



This preview shows how the Decimal color 4138793 looks on a white background.

## Color Contrast Check

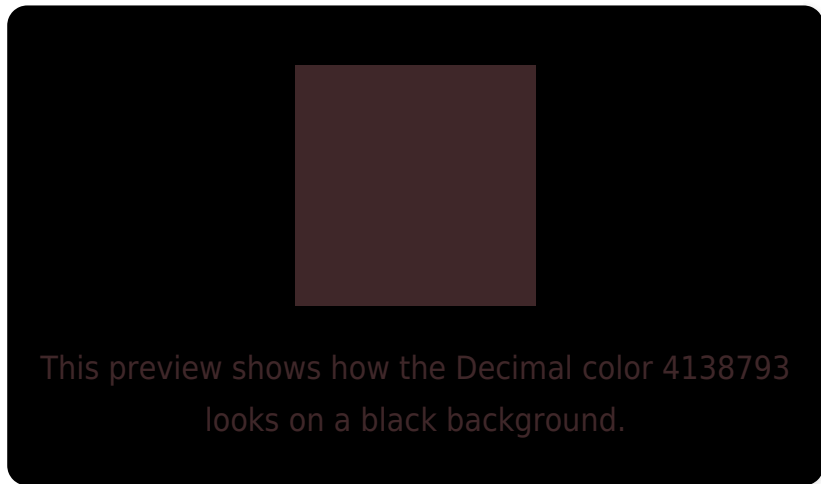
Large Text (above 18pt) WCAG AA ✓ Pass

Any Text WCAG AA ✓ Pass

Large Text (above 18pt) WCAG AAA ✓ Pass

Any Text WCAG AAA ✓ Pass

# Black Background



## Color Contrast Check

Large Text (above 18pt) WCAG AA × Fail

Any Text WCAG AA × Fail

Large Text (above 18pt) WCAG AAA × Fail

Any Text WCAG AAA × Fail

If you want to check with other color combinations, try the [Color Contrast Checker](#).



## Decimal 4138793 Background



This preview shows how black text looks on a background with the Decimal color 4138793.

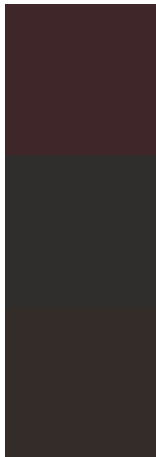


This preview shows how white text looks on a background with the Decimal color 4138793.

# Color Blindness Simulation

Color vision deficiency is a very complex topic, and I could not describe the different causes any better than Wikipedia does, so if you want to learn more, you should check out their [article about color blindness](#).

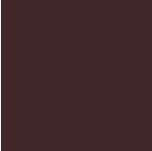
## Dichromacy



**Original Color**  
4138793

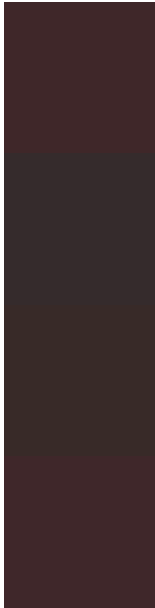
**Protanopia**  
3092013

**Deuteranopia**  
3419176



**Tritanopia**  
4138794

# Trichromacy



**Original Color**

4138793

**Protanomaly**

3484460

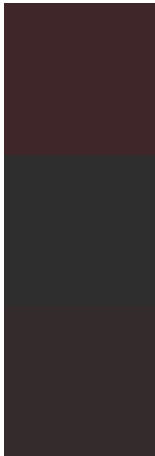
**Deuteranomaly**

3680808

**Tritanomaly**

4138794

# Monochromacy



**Original Color**

4138793

**Achromatopsia**

3026478

**Achromatomaly**

3418924

# CSS Examples

## Text

The CSS property to change the color of the text to Decimal 4138793 is called "color". The color property can be set on classes, ids or directly on the HTML element.

This example shows how text in the color #3F2729 looks like.

```
.text, #text, p{  
    color:#3F2729  
}
```

If you want to add a text shadow in that color use the text-shadow property, you can generate a text shadow directly with our [CSS Text Shadow Generator](#).

Here you see how black text with a 4 pixel #3F2729 colored shadow looks like.

```
.shadow{ text-shadow: 4px 4px 2px #3F2729
}
```

## Border

The CSS property to change the border of an element to Decimal 4138793 is called "border". The border property can be set on classes, ids or directly on the HTML element.

This example shows the color as border, it can be applied via the CSS property "border" or "border-color".

```
.border, #border, table{ border:4px solid
#3F2729 }
```

If only the border color should be changed use the property `border-color`.

```
.border{ border-color:#3F2729 }
```

If you want to add a box shadow in that color use:

Here you see how a box with a 4 pixel #3F2729 colored shadow looks like.

```
.boxshadow{ -moz-box-shadow:4px 4px 4px  
4px #3F2729; -webkit-box-shadow:4px 4px  
4px 4px #3F2729; box-shadow:4px 4px 4px  
4px #3F2729 }
```

# Background

The CSS property to change the background color of an element to Decimal 4138793 is called "background". The background property can be set on classes, ids or directly on the HTML element.

```
.background, #background, body{  
background:#3F2729 }
```

If only the background color should be changed can be used:

```
.background{ background-color:#3F2729 }
```

This example shows the color as background, it is applied via the CSS property "background".

To optimize and compress your CSS code, you can use our [online CSS compressor and optimizer](#) based on csstidy. If you want to create a linear or radial gradient as background or border, check our [CSS Gradient Generator](#).



# Hey! You found this booklet interesting? Support Converting Colors with the new Membership Option!

The pro membership hides all ads, plus gives you double the colors in the color bucket, and more awesome pro features!

**[Learn more, Memberships starting at \\$2.50/m!](#)**

**Follow me  
on Twitter!**

@ConvertingColor