

Converting Colors

Decimal(4138794)

Have a look what the booklet for
Decimal(4138794) contains.

Decimal(4138794)	3
<i>Conversions</i>	4
<i>Details</i>	6
<i>Harmonies</i>	11
<i>Previews</i>	23
<i>Color Blindness Simulation</i>	26
<i>CSS Examples</i>	29

Color

Decimal(4138794)

Conversions

Conversions Part 1

Format	Color
Hex	3F272A
RGB	63, 39, 42
RGB Percent	25%, 15%, 16%
CMY	0.7529, 0.8471, 0.8353
CMYK	0.00, 0.38, 0.33, 0.75
HSL	352°, 24%, 20%
HSV	352°, 38%, 25%
XYZ	3.1933, 2.6750, 2.5385
YIQ	46.5180, 13.3410, 6.0210

Conversions

Conversions Part 2

Format	Color
RYB	63, 39, 42
Decimal	4138794
CIELab	18.69, 11.80, 2.68
CIElCh	19, 12.104, 12.787
Yxy	2.6750, 0.3799, 0.3182
Android (android.graphics.Color)	4282328874 (0xFF3F272A)
YUV	46.5180, -2.2274, 14.4547
Hunter-Lab	16.3553, 6.2299, 2.2464

Details

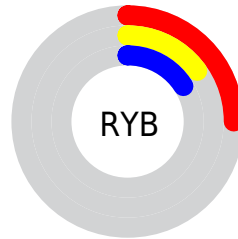
The Decimal color **4138794** is a dark color, and the websafe version is hex **333333**. A complement of this color would be **2572092**, and the grayscale version is **3092271**.

A 20% lighter version of the original color is **7296087**, and **983040** is the 20% darker color. If you saturate the color by 10%, you get **4137252**, and if you desaturate by 10%, it is **4140336**.

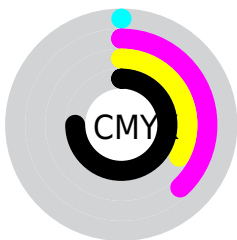
Distribution



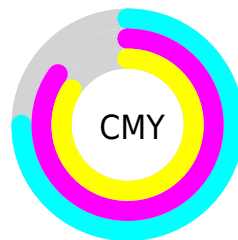
- Red (25%)
- Green (15%)
- Blue (16%)



- Red (25%)
- Yellow (15%)
- Blue (16%)



- Cyan (0%)
- Magenta (38%)
- Yellow (33%)
- Black (75%)



- Cyan (75%)
- Magenta (85%)
- Yellow (84%)

Brightness & Saturation Gradients

These gradients show how the Decimal color 4138794 changes by changing the brightness by 10 percent. The first figure shows a shift by +10% for each color and the second figure -10%.

Similar to the brightness gradients but the following saturation gradients show a change of the Decimal color 4138794 by changing the saturation by 10% instead.



4138794



4138794

16777215



2626070



7296087



983040



9006448



0



10782345



12558499



14400446



16308186



16774134



4138794



4138794

■ 4137252

■ 4140336

■ 4135455

■ 4142133

■ 4133913

■ 4143675

■ 4132372

■ 4145216

■ 4130574

■ 4147014

■ 4129033

■ 4148555

■ 4128776

■ 4150097

■ 4151638

■ 4153436

Harmonies

Analogous

The Analogous color harmony consists of three colors that are next to each other on the color wheel.



3942451



4138794



4073506

Triad

The Triadic color harmony groups three colors that are evenly spaced from another and form a triangle on the color wheel.



4138794



2502944



1781822

Complementary

The Complementary color scheme is a pair of colors which are on the opposite of each other on the color wheel.



4138794



2572092

Split Complementary

Split-complementary colors differ from the complementary color scheme. The scheme consists of three colors, the original color and two neighbors of the complement color.



1192505



4138794



1847848

Square

The Square scheme is like the rectangle color scheme, but the four colors are evenly spaced on the color wheel.



4138794



3157532



1258033



2633022

Rectangle

The Rectangle color scheme consists of four colors that form a rectangle on the color wheel.



4138794



3811870



1258033



1519933

Sweetspot

The Sweet Spot groups the original color and five complimentary colors.



4138794



5392714



3942207



2695972



11053224



2697513

Same Dimension

The Same Dimension uses a secret algorithm to generate beautiful new colors.



4138794



5385265



4141095



2038812



6160396



14549020

Inverse Universe

The Inverse Universe completely reimagines the original color for something new.



4138794



5385265



2569791



2038812



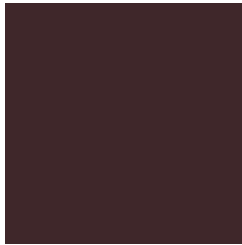
6160396



14549020

Previews

White Background



This preview shows how the Decimal color 4138794 looks on a white background.

Color Contrast Check

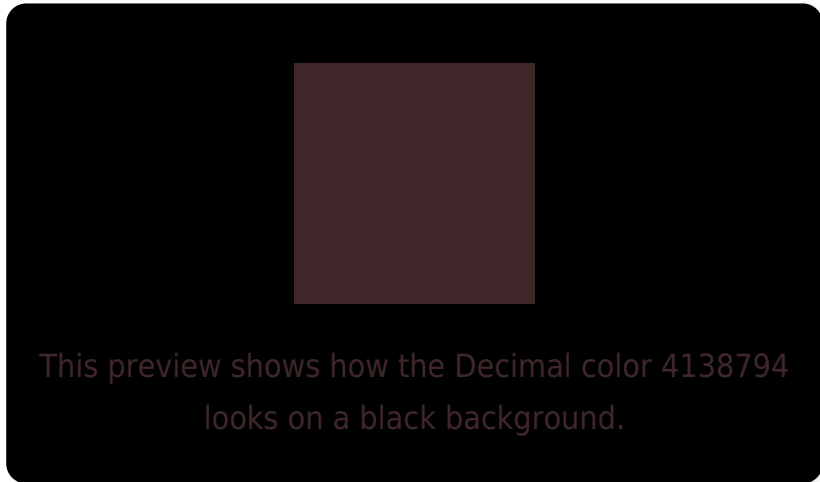
Large Text (above 18pt) WCAG AA ✓ Pass

Any Text WCAG AA ✓ Pass

Large Text (above 18pt) WCAG AAA ✓ Pass

Any Text WCAG AAA ✓ Pass

Black Background



Color Contrast Check

Large Text (above 18pt) WCAG AA × Fail

Any Text WCAG AA × Fail

Large Text (above 18pt) WCAG AAA × Fail

Any Text WCAG AAA × Fail

If you want to check with other color combinations, try the [Color Contrast Checker](#).

Decimal 4138794 Background



This preview shows how black text looks on a background with the Decimal color 4138794.

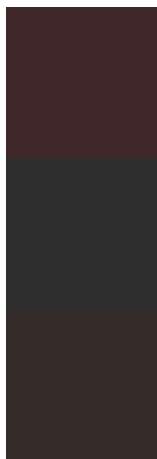


This preview shows how white text looks on a background with the Decimal color 4138794.

Color Blindness Simulation

Color vision deficiency is a very complex topic, and I could not describe the different causes any better than Wikipedia does, so if you want to learn more, you should check out their [article about color blindness](#).

Dichromacy



Original Color

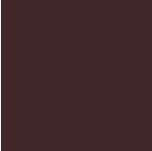
4138794

Protanopia

3092014

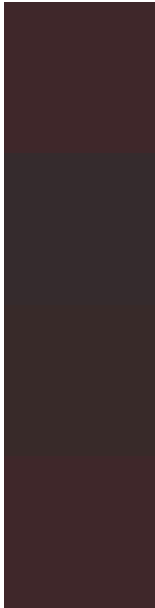
Deuteranopia

3419177



Tritanopia
4138794

Trichromacy



Original Color

4138794

Protanomaly

3484461

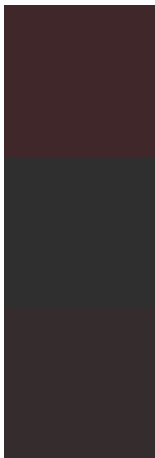
Deuteranomaly

3680809

Tritanomaly

4138794

Monochromacy



Original Color

4138794

Achromatopsia

3092271

Achromatomaly

3484717

CSS Examples

Text

The CSS property to change the color of the text to Decimal 4138794 is called "color". The color property can be set on classes, ids or directly on the HTML element.

This example shows how text in the color #3F272A looks like.

```
.text, #text, p{  
    color:#3F272A  
}
```

If you want to add a text shadow in that color use the text-shadow property, you can generate a text shadow directly with our [CSS Text Shadow Generator](#).

Here you see how black text with a 4 pixel #3F272A colored shadow looks like.

```
.shadow{ text-shadow: 4px 4px 2px #3F272A
}
```

Border

The CSS property to change the border of an element to Decimal 4138794 is called "border". The border property can be set on classes, ids or directly on the HTML element.

This example shows the color as border, it can be applied via the CSS property "border" or "border-color".

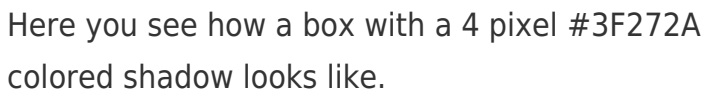
```
.border, #border, table{ border:4px solid
#3F272A }
```

If only the border color should be changed use the property `border-color`.

```
.border{ border-color:#3F272A }
```

If you want to add a box shadow in that color use:

Here you see how a box with a 4 pixel #3F272A colored shadow looks like.

A rectangular box with a dark red border and a dark red shadow. The box is white with a thin dark red border on the top and left sides, and a thicker dark red shadow on the bottom and right sides.

```
.boxshadow{ -moz-box-shadow:4px 4px 4px  
4px #3F272A; -webkit-box-shadow:4px 4px  
4px 4px #3F272A; box-shadow:4px 4px 4px  
4px #3F272A }
```

Background

The CSS property to change the background color of an element to Decimal 4138794 is called "background". The background property can be set on classes, ids or directly on the HTML element.

```
.background, #background, body{  
background:#3F272A }
```

If only the background color should be changed can be used:

```
.background{ background-color:#3F272A }
```

This example shows the color as background, it is applied via the CSS property "background".

To optimize and compress your CSS code, you can use our [online CSS compressor and optimizer](#) based on csstidy. If you want to create a linear or radial gradient as background or border, check our [CSS Gradient Generator](#).

Hey! You found this booklet interesting? Support Converting Colors with the new Membership Option!

The pro membership hides all ads, plus gives you double the colors in the color bucket, and more awesome pro features!

[Learn more, Memberships starting at \\$2.50/m!](#)

**Follow me
on Twitter!**

@ConvertingColor