

# Converting Colors

Decimal(4202529)

Have a look what the booklet for  
Decimal(4202529) contains.

<b>Decimal(4202529)</b> .....	3
<i><b>Conversions</b></i> .....	4
<i><b>Details</b></i> .....	6
<i><b>Harmonies</b></i> .....	11
<i><b>Previews</b></i> .....	23
<i><b>Color Blindness Simulation</b></i> .....	26
<i><b>CSS Examples</b></i> .....	29

**Color**

**Decimal(4202529)**

# Conversions

## Conversions Part 1

Format	Color
Hex	402021
RGB	64, 32, 33
RGB Percent	25%, 13%, 13%
CMY	0.7490, 0.8745, 0.8706
CMYK	0.00, 0.50, 0.48, 0.75
HSL	358°, 33%, 19%
HSV	358°, 50%, 25%
XYZ	2.9054, 2.2328, 1.7167
YIQ	41.6820, 18.7510, 7.0950

# Conversions

## Conversions Part 2

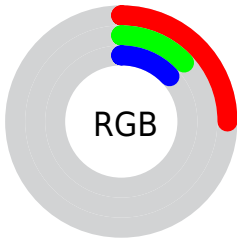
<b>Format</b>	<b>Color</b>
<b>RYB</b>	64, 32, 33
Decimal	4202529
CIELab	16.66, 15.54, 6.17
CIELCh	17, 16.720, 21.647
Yxy	2.2328, 0.4238, 0.3257
Android (android.graphics.Color)	4282392609 (0xFF402021)
YUV	41.6820, -4.2802, 19.5729
Hunter-Lab	14.9426, 8.5572, 3.6483

# Details

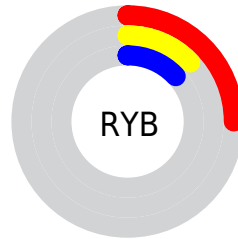
The Decimal color **4202529** is a dark color, and the websafe version is hex **663333**. A complement of this color would be **2113599**, and the grayscale version is **2763306**.

A 20% lighter version of the original color is **7425357**, and **196608** is the 20% darker color. If you saturate the color by 10%, you get **4200987**, and if you desaturate by 10%, it is **4204071**.

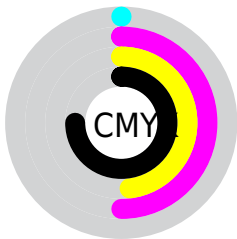
# Distribution



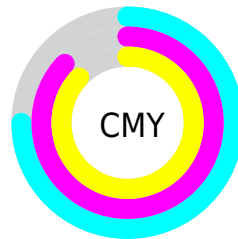
- Red (25%)
- Green (13%)
- Blue (13%)



- Red (25%)
- Yellow (13%)
- Blue (13%)



- Cyan (0%)
- Magenta (50%)
- Yellow (48%)
- Black (75%)



- Cyan (75%)
- Magenta (87%)
- Yellow (87%)

# Brightness & Saturation Gradients

These gradients show how the Decimal color 4202529 changes by changing the brightness by 10 percent. The first figure shows a shift by +10% for each color and the second figure -10%.

Similar to the brightness gradients but the following saturation gradients show a change of the Decimal color 4202529 by changing the saturation by 10% instead.





4202529



4202529

16777215



2689802



7425357



196608



9200997



0



10911358



12753048



14594994



16502478



16772074



4202529



4202529

■ 4200987

■ 4204071

■ 4199189

■ 4205869

■ 4197646

■ 4207412

■ 4195848

■ 4209210

■ 4194306

■ 4210752

■ 4212294

■ 4214092

■ 4215635

■ 4217433

# Harmonies

## Analogous

The Analogous color harmony consists of three colors that are next to each other on the color wheel.



4071469



4202529



3941143

# Triad

The Triadic color harmony groups three colors that are evenly spaced from another and form a triangle on the color wheel.



4202529



1715738



994113

# Complementary

The Complementary color scheme is a pair of colors which are on the opposite of each other on the color wheel.



4202529



2113599

# Split Complementary

Split-complementary colors differ from the complementary color scheme. The scheme consists of three colors, the original color and two neighbors of the complement color.



11836



4202529



536357

# Square

The Square scheme is like the rectangle color scheme, but the four colors are evenly spaced on the color wheel.



4202529



2632466



12082



2434879

# Rectangle

The Rectangle color scheme consists of four colors that form a rectangle on the color wheel.



4202529



3614226



12082



339008



# Sweetspot

The Sweet Spot groups the original color and five complimentary colors.



4202529



5523528



4137024



2827300



11250603



2829099



# Same Dimension

The Same Dimension uses a secret algorithm to generate beautiful new colors.



4202529



5513763



4206368



2170398



6356995



14680071



# Inverse Universe

The Inverse Universe completely reimagines the original color for something new.



4202529



5513763



2109760



2170398



6356995

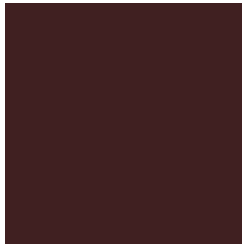


14680071



# Previews

## White Background



This preview shows how the Decimal color 4202529 looks on a white background.

## Color Contrast Check

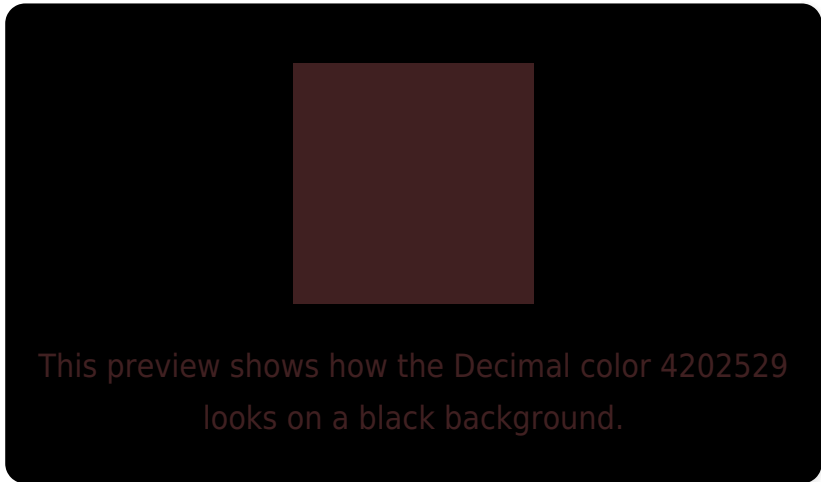
Large Text (above 18pt) WCAG AA ✓ Pass

Any Text WCAG AA ✓ Pass

Large Text (above 18pt) WCAG AAA ✓ Pass

Any Text WCAG AAA ✓ Pass

# Black Background



## Color Contrast Check

Large Text (above 18pt) WCAG AA × Fail

Any Text WCAG AA × Fail

Large Text (above 18pt) WCAG AAA × Fail

Any Text WCAG AAA × Fail

If you want to check with other color combinations, try the [Color Contrast Checker](#).



## Decimal 4202529 Background



This preview shows how black text looks on a background with the Decimal color 4202529.

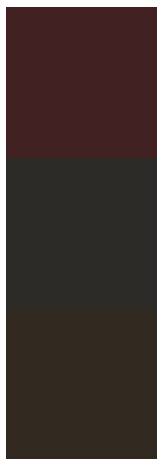


This preview shows how white text looks on a background with the Decimal color 4202529.

# Color Blindness Simulation

Color vision deficiency is a very complex topic, and I could not describe the different causes any better than Wikipedia does, so if you want to learn more, you should check out their [article about color blindness](#).

## Dichromacy



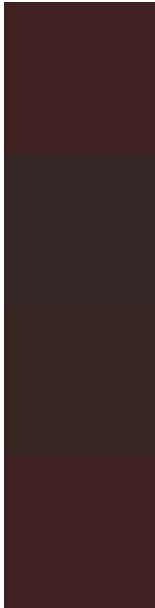
**Original Color**  
4202529

**Protanopia**  
2894374

**Deuteranopia**  
3221536



# Trichromacy



**Original Color**

4202529

**Protanomaly**

3352100

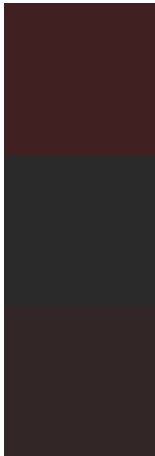
**Deuteranomaly**

3548448

**Tritanomaly**

4202530

# Monochromacy



**Original Color**

4202529

**Achromatopsia**

2763306

**Achromatomaly**

3286567

# CSS Examples

## Text

The CSS property to change the color of the text to Decimal 4202529 is called "color". The color property can be set on classes, ids or directly on the HTML element.

This example shows how text in the color #402021 looks like.

```
.text, #text, p{  
    color:#402021  
}
```

If you want to add a text shadow in that color use the text-shadow property, you can generate a text shadow directly with our [CSS Text Shadow Generator](#).

Here you see how black text with a 4 pixel #402021 colored shadow looks like.

```
.shadow{ text-shadow: 4px 4px 2px #402021
}
```

## Border

The CSS property to change the border of an element to Decimal 4202529 is called "border". The border property can be set on classes, ids or directly on the HTML element.

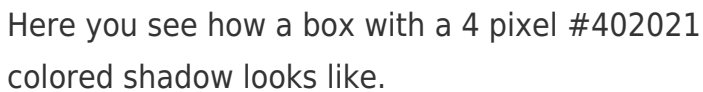
This example shows the color as border, it can be applied via the CSS property "border" or "border-color".

```
.border, #border, table{ border:4px solid
#402021 }
```

If only the border color should be changed use the property `border-color`.

```
.border{ border-color:#402021 }
```

If you want to add a box shadow in that color use:



Here you see how a box with a 4 pixel #402021 colored shadow looks like.

```
.boxshadow{ -moz-box-shadow:4px 4px 4px  
4px #402021; -webkit-box-shadow:4px 4px  
4px 4px #402021; box-shadow:4px 4px 4px  
4px #402021 }
```

# Background

The CSS property to change the background color of an element to Decimal 4202529 is called "background". The background property can be set on classes, ids or directly on the HTML element.

```
.background, #background, body{  
background:#402021 }
```

If only the background color should be changed can be used:

```
.background{ background-color:#402021 }
```

This example shows the color as background, it is applied via the CSS property "background".

To optimize and compress your CSS code, you can use our [online CSS compressor and optimizer](#) based on csstidy. If you want to create a linear or radial gradient as background or border, check our [CSS Gradient Generator](#).



# Hey! You found this booklet interesting? Support Converting Colors with the new Membership Option!

The pro membership hides all ads, plus gives you double the colors in the color bucket, and more awesome pro features!

**[Learn more, Memberships starting at \\$2.50/m!](#)**

**Follow me  
on Twitter!**

@ConvertingColor