

Converting Colors

Decimal(4205871)

Have a look what the booklet for
Decimal(4205871) contains.

Decimal(4205871)	3
<i>Conversions</i>	4
<i>Details</i>	6
<i>Harmonies</i>	11
<i>Previews</i>	23
<i>Color Blindness Simulation</i>	26
<i>CSS Examples</i>	29

Color

Decimal(4205871)

Conversions

Conversions Part 1

Format	Color
Hex	402D2F
RGB	64, 45, 47
RGB Percent	25%, 18%, 18%
CMY	0.7490, 0.8235, 0.8157
CMYK	0.00, 0.30, 0.27, 0.75
HSL	354°, 17%, 21%
HSV	354°, 30%, 25%
XYZ	3.5658, 3.1720, 3.1136
YIQ	50.9090, 10.6820, 4.6500

Conversions

Conversions Part 2

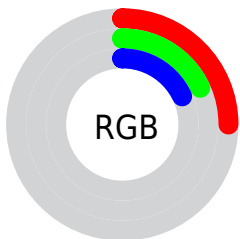
Format	Color
RYB	64, 45, 47
Decimal	4205871
CIELab	20.72, 9.11, 2.15
CIElCh	21, 9.357, 13.286
Yxy	3.1720, 0.3620, 0.3220
Android (android.graphics.Color)	4282395951 (0xFF402D2F)
YUV	50.9090, -1.9271, 11.4808
Hunter-Lab	17.8101, 4.5705, 2.1017

Details

The Decimal color **4205871** is a dark color, and the websafe version is hex **333333**. A complement of this color would be **2965566**, and the grayscale version is **3355443**.

A 20% lighter version of the original color is **7363421**, and **1507328** is the 20% darker color. If you saturate the color by 10%, you get **4204329**, and if you desaturate by 10%, it is **4207413**.

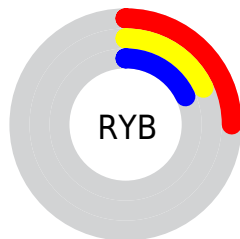
Distribution



Red (25%)

Green (18%)

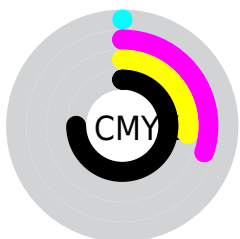
Blue (18%)



Red (25%)

Yellow (18%)

Blue (18%)

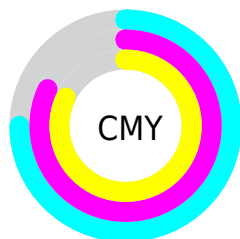


Cyan (0%)

Magenta (30%)

Yellow (27%)

Black (75%)



Cyan (75%)

Magenta (82%)

Yellow (82%)

Brightness & Saturation Gradients

These gradients show how the Decimal color 4205871 changes by changing the brightness by 10 percent. The first figure shows a shift by +10% for each color and the second figure -10%.

Similar to the brightness gradients but the following saturation gradients show a change of the Decimal color 4205871 by changing the saturation by 10% instead.



4205871



4205871

16777215



2758682



7363421



1507328



9073525



0



10784143



12560297



14402501



16309985



16776189



4205871



4205871

■ 4204329

■ 4207413

■ 4202532

■ 4209210

■ 4200990

■ 4210752

■ 4199192

■ 4212550

■ 4197650

■ 4214092

■ 4196109

■ 4215633

■ 4194311

■ 4217431

■ 4218973

■ 4220771

Harmonies

Analogous

The Analogous color harmony consists of three colors that are next to each other on the color wheel.



4009270



4205871



4140585

Triad

The Triadic color harmony groups three colors that are evenly spaced from another and form a triangle on the color wheel.



4205871



2896936



2438207

Complementary

The Complementary color scheme is a pair of colors which are on the opposite of each other on the color wheel.



4205871



2965566

Split Complementary

Split-complementary colors differ from the complementary color scheme. The scheme consists of three colors, the original color and two neighbors of the complement color.



2045243



4205871



2438446

Square

The Square scheme is like the rectangle color scheme, but the four colors are evenly spaced on the color wheel.



4205871



3420708



2045493



3027263

Rectangle

The Rectangle color scheme consists of four colors that form a rectangle on the color wheel.



4205871



3944230



2045493



2241598

Sweetspot

The Sweet Spot groups the original color and five complimentary colors.



4205871



5524813



4074816



2828071



11250603



2829099

Same Dimension

The Same Dimension uses a secret algorithm to generate beautiful new colors.



4205871



5518905



4207661



2170398



6357002



14680088

Inverse Universe

The Inverse Universe completely reimagines the original color for something new.



4205871



5518905



2963776



2170398



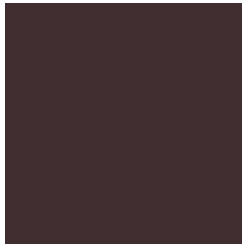
6357002



14680088

Previews

White Background



This preview shows how the Decimal color 4205871 looks on a white background.

Color Contrast Check

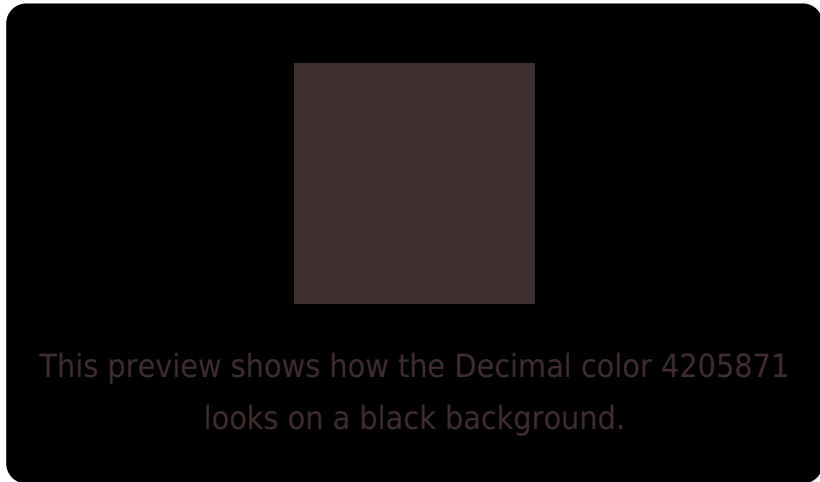
Large Text (above 18pt) WCAG AA ✓ Pass

Any Text WCAG AA ✓ Pass

Large Text (above 18pt) WCAG AAA ✓ Pass

Any Text WCAG AAA ✓ Pass

Black Background



Color Contrast Check

Large Text (above 18pt) WCAG AA × Fail

Any Text WCAG AA × Fail

Large Text (above 18pt) WCAG AAA × Fail

Any Text WCAG AAA × Fail

If you want to check with other color combinations, try the [Color Contrast Checker](#).

Decimal 4205871 Background



This preview shows how black text looks on a background with the Decimal color 4205871.

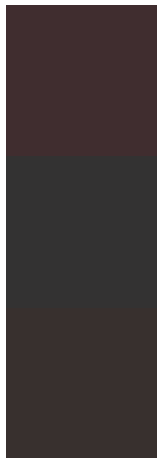


This preview shows how white text looks on a background with the Decimal color 4205871.

Color Blindness Simulation

Color vision deficiency is a very complex topic, and I could not describe the different causes any better than Wikipedia does, so if you want to learn more, you should check out their [article about color blindness](#).

Dichromacy



Original Color
4205871

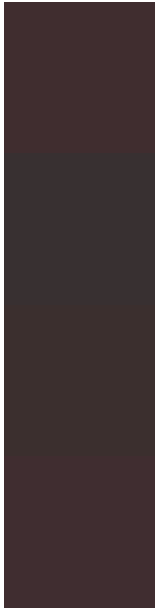
Protanopia
3355186

Deuteranopia
3682350



Tritanopia
4205872

Trichromacy



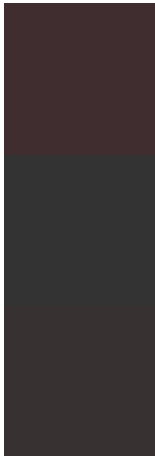
Original Color
4205871

Protanomaly
3682353

Deuteranomaly
3878702

Tritanomaly
4205872

Monochromacy



Original Color
4205871

Achromatopsia
3355443

Achromatomaly
3682610

CSS Examples

Text

The CSS property to change the color of the text to Decimal 4205871 is called "color". The color property can be set on classes, ids or directly on the HTML element.

This example shows how text in the color #402D2F looks like.

```
.text, #text, p{  
  color:#402D2F  
}
```

If you want to add a text shadow in that color use the text-shadow property, you can generate a text shadow directly with our [CSS Text Shadow Generator](#).

Here you see how black text with a 4 pixel #402D2F colored shadow looks like.

```
.shadow{ text-shadow: 4px 4px 2px #402D2F
}
```

Border

The CSS property to change the border of an element to Decimal 4205871 is called "border". The border property can be set on classes, ids or directly on the HTML element.

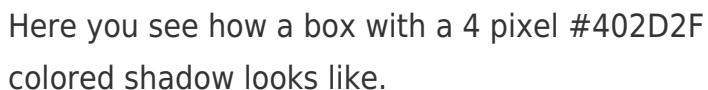
This example shows the color as border, it can be applied via the CSS property "border" or "border-color".

```
.border, #border, table{ border:4px solid
#402D2F }
```

If only the border color should be changed use the property `border-color`.

```
.border{ border-color:#402D2F }
```

If you want to add a box shadow in that color use:

A rectangular box with a dark blue shadow. The box is white with a thin black border. The shadow is a dark blue color, matching the #402D2F hex code mentioned in the text. The shadow is applied to the bottom and right sides of the box, creating a 3D effect.

Here you see how a box with a 4 pixel #402D2F colored shadow looks like.

```
.boxshadow{ -moz-box-shadow:4px 4px 4px  
4px #402D2F; -webkit-box-shadow:4px 4px  
4px 4px #402D2F; box-shadow:4px 4px 4px  
4px #402D2F }
```

Background

The CSS property to change the background color of an element to Decimal 4205871 is called "background". The background property can be set on classes, ids or directly on the HTML element.

```
.background, #background, body{  
background:#402D2F }
```

If only the background color should be changed can be used:

```
.background{ background-color:#402D2F }
```

This example shows the color as background, it is applied via the CSS property "background".

To optimize and compress your CSS code, you can use our [online CSS compressor and optimizer](#) based on csstidy. If you want to create a linear or radial gradient as background or border, check our [CSS Gradient Generator](#).

Hey! You found this booklet interesting? Support Converting Colors with the new Membership Option!

The pro membership hides all ads, plus gives you double the colors in the color bucket, and more awesome pro features!

[Learn more, Memberships starting at \\$2.50/m!](#)

**Follow me
on Twitter!**

@ConvertingColor