

Converting Colors

Decimal(4266508)

Have a look what the booklet for
Decimal(4266508) contains.

Decimal(4266508)	3
<i>Conversions</i>	4
<i>Details</i>	6
<i>Harmonies</i>	11
<i>Previews</i>	23
<i>Color Blindness Simulation</i>	26
<i>CSS Examples</i>	29

Color

Decimal(4266508)

Conversions

Conversions Part 1

Format	Color
Hex	411A0C
RGB	65, 26, 12
RGB Percent	25%, 10%, 5%
CMY	0.7451, 0.8980, 0.9529
CMYK	0.00, 0.60, 0.82, 0.75
HSL	16°, 69%, 15%
HSV	16°, 82%, 25%
XYZ	2.6157, 1.8892, 0.5746
YIQ	36.0650, 27.7380, 3.9140

Conversions

Conversions Part 2

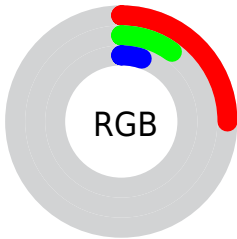
Format	Color
R_{YB}	65, 31, 12
Decimal	4266508
CIE _{Lab}	14.89, 17.79, 17.46
CIE _{LCh}	15, 24.929, 44.463
Yxy	1.8892, 0.5150, 0.3719
Android (android.graphics.Color)	4282456588 (0xFF411A0C)
YUV	36.0650, -11.8640, 25.3760
Hunter-Lab	13.7446, 9.9170, 7.1426

Details

The Decimal color **4266508** is a dark color, and the websafe version is hex **330000**. A complement of this color would be **799553**, and the grayscale version is **2368548**.

A 20% lighter version of the original color is **7620151**, and **0** is the 20% darker color. If you saturate the color by 10%, you get **4265222**, and if you desaturate by 10%, it is **4267795**.

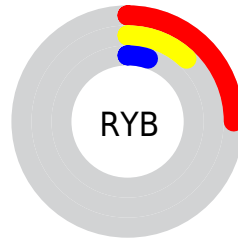
Distribution



Red (25%)

Green (10%)

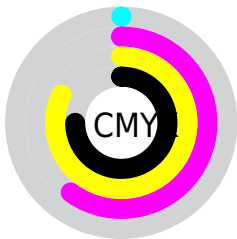
Blue (5%)



Red (25%)

Yellow (12%)

Blue (5%)

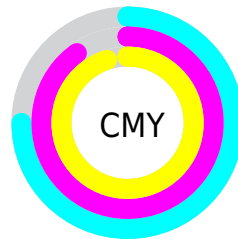


Cyan (0%)

Magenta (60%)

Yellow (82%)

Black (75%)



Cyan (75%)

Magenta (90%)

Yellow (95%)

Brightness & Saturation Gradients

These gradients show how the Decimal color 4266508 changes by changing the brightness by 10 percent. The first figure shows a shift by +10% for each color and the second figure -10%.

Similar to the brightness gradients but the following saturation gradients show a change of the Decimal color 4266508 by changing the saturation by 10% instead.

■ 4266508

■ 4266508

■ 16777196

■ 2687744

■ 7620151

■ 0

■ 9395790

■ 11171686

■ 13078911

■ 14920857

■ 16762804

■ 16770000

■ 4266508

■ 4266508

■ 4265222

■ 4267795

■ 4264192

■ 4269081

■ 4270112

■ 4271398

■ 4272685

■ 4273971

■ 4275002

■ 4276288

■ 4277575

Harmonies

Analogous

The Analogous color harmony consists of three colors that are next to each other on the color wheel.



4527390



4266508



3612928

Triad

The Triadic color harmony groups three colors that are evenly spaced from another and form a triangle on the color wheel.



4266508



11547



1189192

Complementary

The Complementary color scheme is a pair of colors which are on the opposite of each other on the color wheel.



4266508



799553

Split Complementary

Split-complementary colors differ from the complementary color scheme. The scheme consists of three colors, the original color and two neighbors of the complement color.



10823



4266508



11822

Square

The Square scheme is like the rectangle color scheme, but the four colors are evenly spaced on the color wheel.



4266508



1256201



11582



3218751

Rectangle

The Rectangle color scheme consists of four colors that form a rectangle on the color wheel.



4266508



2958592



11582



10057

Sweetspot

The Sweet Spot groups the original color and five complimentary colors.



4266508



5522752



4262964



2826783



11250603



2829099

Same Dimension

The Same Dimension uses a secret algorithm to generate beautiful new colors.



4266508



5510914



4273164



2170654



6363648



14695168

Inverse Universe

The Inverse Universe completely reimagines the original color for something new.



799553



147028



792897



1974305



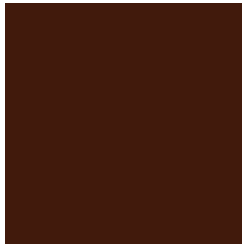
18273



42464

Previews

White Background



This preview shows how the Decimal color 4266508 looks on a white background.

Color Contrast Check

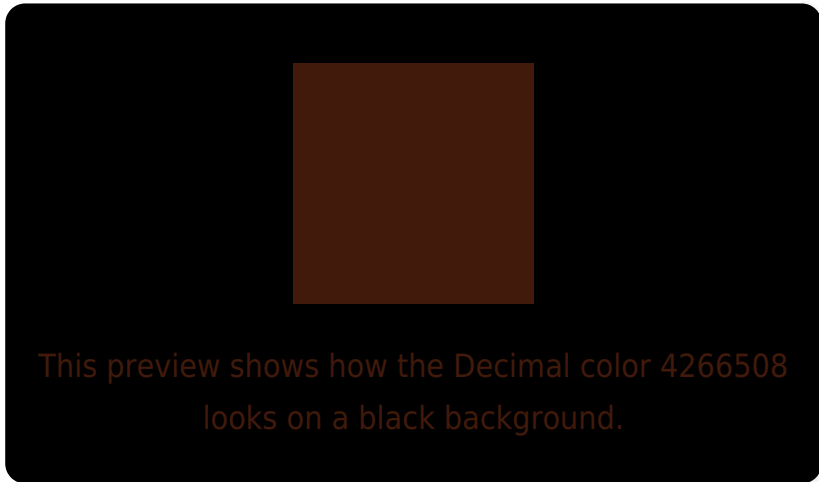
Large Text (above 18pt) WCAG AA ✓ Pass

Any Text WCAG AA ✓ Pass

Large Text (above 18pt) WCAG AAA ✓ Pass

Any Text WCAG AAA ✓ Pass

Black Background



Color Contrast Check

Large Text (above 18pt) WCAG AA × Fail

Any Text WCAG AA × Fail

Large Text (above 18pt) WCAG AAA × Fail

Any Text WCAG AAA × Fail

If you want to check with other color combinations, try the [Color Contrast Checker](#).

Decimal 4266508 Background



This preview shows how black text looks on a background with the Decimal color 4266508.

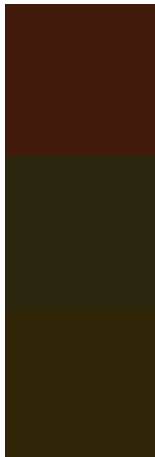


This preview shows how white text looks on a background with the Decimal color 4266508.

Color Blindness Simulation

Color vision deficiency is a very complex topic, and I could not describe the different causes any better than Wikipedia does, so if you want to learn more, you should check out their [article about color blindness](#).


Dichromacy



Original Color
4266508

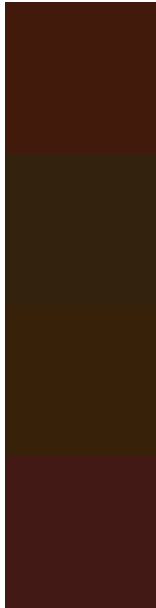
Protanopia
2828047

Deuteranopia
3220744



Tritanopia
4331546

Trichromacy



Original Color
4266508

Protanomaly
3351054

Deuteranomaly
3612937

Tritanomaly
4331797

Monochromacy



Original Color
4266508

Achromatopsia
2368548

Achromatomaly
3088411

CSS Examples

Text

The CSS property to change the color of the text to Decimal 4266508 is called "color". The color property can be set on classes, ids or directly on the HTML element.

This example shows how text in the color #411A0C looks like.

```
.text, #text, p{  
    color:#411A0C  
}
```

If you want to add a text shadow in that color use the text-shadow property, you can generate a text shadow directly with our [CSS Text Shadow Generator](#).

Here you see how black text with a 4 pixel #411A0C colored shadow looks like.

```
.shadow{ text-shadow: 4px 4px 2px #411A0C
}
```

Border

The CSS property to change the border of an element to Decimal 4266508 is called "border". The border property can be set on classes, ids or directly on the HTML element.

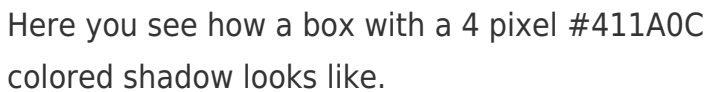
This example shows the color as border, it can be applied via the CSS property "border" or "border-color".

```
.border, #border, table{ border:4px solid
#411A0C }
```

If only the border color should be changed use the property `border-color`.

```
.border{ border-color:#411A0C }
```

If you want to add a box shadow in that color use:



Here you see how a box with a 4 pixel #411A0C colored shadow looks like.

```
.boxshadow{ -moz-box-shadow:4px 4px 4px  
4px #411A0C; -webkit-box-shadow:4px 4px  
4px 4px #411A0C; box-shadow:4px 4px 4px  
4px #411A0C }
```

Background

The CSS property to change the background color of an element to Decimal 4266508 is called "background". The background property can be set on classes, ids or directly on the HTML element.

```
.background, #background, body{  
background:#411A0C }
```

If only the background color should be changed can be used:

```
.background{ background-color:#411A0C }
```

This example shows the color as background, it is applied via the CSS property "background".

To optimize and compress your CSS code, you can use our [online CSS compressor and optimizer](#) based on csstidy. If you want to create a linear or radial gradient as background or border, check our [CSS Gradient Generator](#).

Hey! You found this booklet interesting? Support Converting Colors with the new Membership Option!

The pro membership hides all ads, plus gives you double the colors in the color bucket, and more awesome pro features!

[Learn more, Memberships starting at \\$2.50/m!](#)

**Follow me
on Twitter!**

@ConvertingColor