

# Converting Colors

Decimal(4273192)

Have a look what the booklet for  
Decimal(4273192) contains.

<b>Decimal(4273192)</b> .....	3
<i><b>Conversions</b></i> .....	4
<i><b>Details</b></i> .....	6
<i><b>Harmonies</b></i> .....	11
<i><b>Previews</b></i> .....	23
<i><b>Color Blindness Simulation</b></i> .....	26
<i><b>CSS Examples</b></i> .....	29

# Color

**Decimal(4273192)**

# Conversions

## Conversions Part 1

Format	Color
Hex	413428
RGB	65, 52, 40
RGB Percent	25%, 20%, 16%
CMY	0.7451, 0.7961, 0.8431
CMYK	0.00, 0.20, 0.38, 0.75
HSL	29°, 24%, 21%
HSV	29°, 38%, 25%
XYZ	3.7910, 3.7330, 2.5282
YIQ	54.5190, 11.6000, -0.9760

# Conversions

## Conversions Part 2

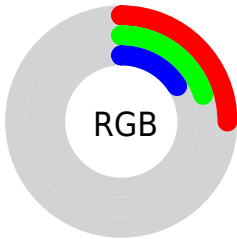
<b>Format</b>	<b>Color</b>
<a href="#">RYB</a>	<a href="#">65, 63, 40</a>
Decimal	<a href="#">4273192</a>
CIELab	<a href="#">22.77, 3.73, 9.78</a>
CIELCh	<a href="#">23, 10.471, 69.138</a>
Yxy	<a href="#">3.7330, 0.3771, 0.3714</a>
Android (android.graphics.Color)	<a href="#">4282463272 (0xFF413428)</a>
YUV	<a href="#">54.5190, -7.1579, 9.1918</a>
Hunter-Lab	<a href="#">19.3210, 1.2118, 5.7664</a>

# Details

The Decimal color **4273192** is a dark color, and the websafe version is hex **333333**. A complement of this color would be **2635073**, and the grayscale version is **3618615**.

A 20% lighter version of the original color is **7430741**, and **1378048** is the 20% darker color. If you saturate the color by 10%, you get **4272417**, and if you desaturate by 10%, it is **4273967**.

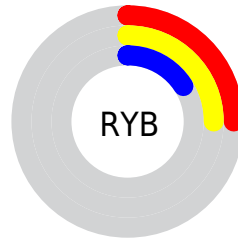
# Distribution



Red (25%)

Green (20%)

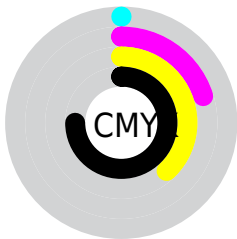
Blue (16%)



Red (25%)

Yellow (25%)

Blue (16%)

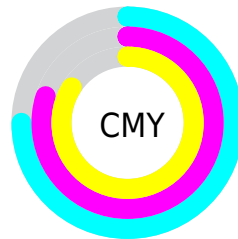


Cyan (0%)

Magenta (20%)

Yellow (38%)

Black (75%)



Cyan (75%)

Magenta (80%)

Yellow (84%)

# Brightness & Saturation Gradients

These gradients show how the Decimal color 4273192 changes by changing the brightness by 10 percent. The first figure shows a shift by +10% for each color and the second figure -10%.

Similar to the brightness gradients but the following saturation gradients show a change of the Decimal color 4273192 by changing the saturation by 10% instead.





4273192



4273192

16777215



2760468



7430741



1378048



9141101



0



10917255



12693665



14535612



16443352



16777204



4273192



4273192

■ 4272417

■ 4273967

■ 4271387

■ 4274997

■ 4270613

■ 4275772

■ 4269582

■ 4276802

■ 4268808

■ 4277577

■ 4268033

■ 4278351

■ 4267776

■ 4279382

■ 4280156

■ 4280930

# Harmonies

## Analogous

The Analogous color harmony consists of three colors that are next to each other on the color wheel.



4534829



4273192



3815207

# Triad

The Triadic color harmony groups three colors that are evenly spaced from another and form a triangle on the color wheel.



4273192



2243385



3880002

# Complementary

The Complementary color scheme is a pair of colors which are on the opposite of each other on the color wheel.



4273192



2635073

# Split Complementary

Split-complementary colors differ from the complementary color scheme. The scheme consists of three colors, the original color and two neighbors of the complement color.



3159622



4273192



2112064

# Square

The Square scheme is like the rectangle color scheme, but the four colors are evenly spaced on the color wheel.



4273192



2636337



2505029



4337980

# Rectangle

The Rectangle color scheme consists of four colors that form a rectangle on the color wheel.



4273192



3422249



2505029



3617860



# Sweetspot

The Sweet Spot groups the original color and five complimentary colors.



4273192



5525322



4270133



2828325



11250603



2829099



# Same Dimension

The Same Dimension uses a secret algorithm to generate beautiful new colors.



4273192



5521453



4276264



2170654



6369024



14707712



# Inverse Universe

The Inverse Universe completely reimagines the original color for something new.



2635073



2966100



2632001



1974305



12897

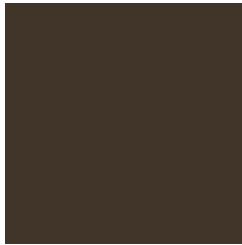


30176



# Previews

## White Background



This preview shows how the Decimal color 4273192 looks on a white background.

## Color Contrast Check

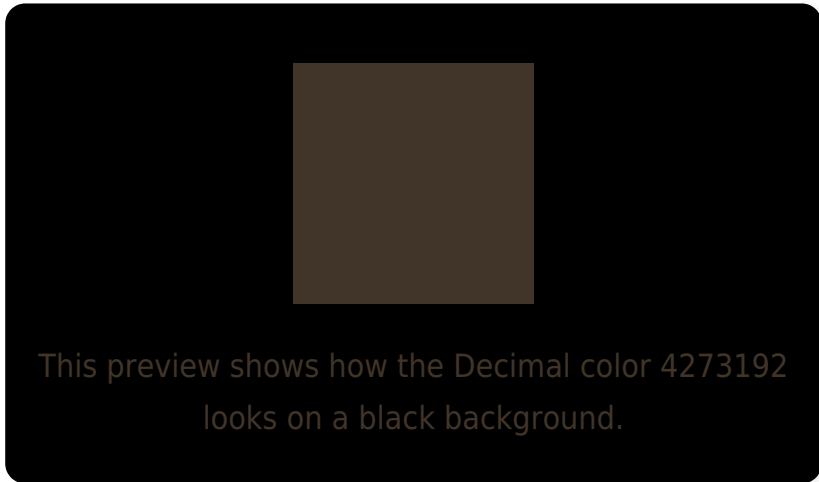
Large Text (above 18pt) WCAG AA ✓ Pass

Any Text WCAG AA ✓ Pass

Large Text (above 18pt) WCAG AAA ✓ Pass

Any Text WCAG AAA ✓ Pass

# Black Background



## Color Contrast Check

Large Text (above 18pt) WCAG AA × Fail

Any Text WCAG AA × Fail

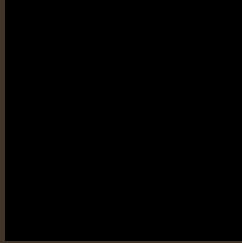
Large Text (above 18pt) WCAG AAA × Fail

Any Text WCAG AAA × Fail

If you want to check with other color combinations, try the [Color Contrast Checker](#).



## Decimal 4273192 Background



This preview shows how black text looks on a background with the Decimal color 4273192.

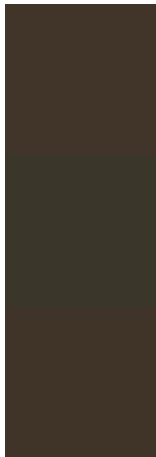


This preview shows how white text looks on a background with the Decimal color 4273192.

# Color Blindness Simulation

Color vision deficiency is a very complex topic, and I could not describe the different causes any better than Wikipedia does, so if you want to learn more, you should check out their [article about color blindness](#).

## Dichromacy



**Original Color**  
4273192

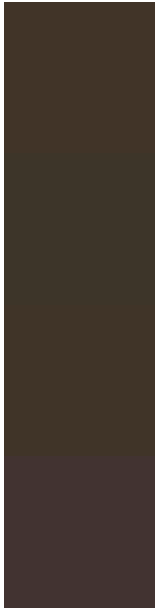
**Protanopia**  
3814953

**Deuteranopia**  
4207656



**Tritanopia**  
4338230

# Trichromacy



**Original Color**

4273192

**Protanomaly**

4011305

**Deuteranomaly**

4207656

**Tritanomaly**

4338481

# Monochromacy



**Original Color**

4273192

**Achromatopsia**

3618615

**Achromatomaly**

3880498

# CSS Examples

## Text

The CSS property to change the color of the text to Decimal 4273192 is called "color". The color property can be set on classes, ids or directly on the HTML element.

This example shows how text in the color #413428 looks like.

```
.text, #text, p{  
    color:#413428  
}
```

If you want to add a text shadow in that color use the text-shadow property, you can generate a text shadow directly with our [CSS Text Shadow Generator](#).

Here you see how black text with a 4 pixel #413428 colored shadow looks like.

```
.shadow{ text-shadow: 4px 4px 2px #413428
}
```

## Border

The CSS property to change the border of an element to Decimal 4273192 is called "border". The border property can be set on classes, ids or directly on the HTML element.

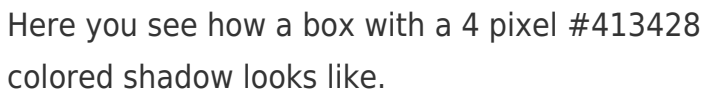
This example shows the color as border, it can be applied via the CSS property "border" or "border-color".

```
.border, #border, table{ border:4px solid
#413428 }
```

If only the border color should be changed use the property `border-color`.

```
.border{ border-color:#413428 }
```

If you want to add a box shadow in that color use:



Here you see how a box with a 4 pixel #413428 colored shadow looks like.

```
.boxshadow{ -moz-box-shadow:4px 4px 4px  
4px #413428; -webkit-box-shadow:4px 4px  
4px 4px #413428; box-shadow:4px 4px 4px  
4px #413428 }
```

# Background

The CSS property to change the background color of an element to Decimal 4273192 is called "background". The background property can be set on classes, ids or directly on the HTML element.

```
.background, #background, body{  
background:#413428 }
```

If only the background color should be changed can be used:

```
.background{ background-color:#413428 }
```

This example shows the color as background, it is applied via the CSS property "background".

To optimize and compress your CSS code, you can use our [online CSS compressor and optimizer](#) based on csstidy. If you want to create a linear or radial gradient as background or border, check our [CSS Gradient Generator](#).



Hey! You found this booklet interesting? Support Converting Colors with the new Membership Option!

The pro membership hides all ads, plus gives you double the colors in the color bucket, and more awesome pro features!

**[Learn more, Memberships starting at \\$2.50/m!](#)**

**Follow me  
on Twitter!**

@ConvertingColor