

Converting Colors

Decimal(4331270)

Have a look what the booklet for
Decimal(4331270) contains.

Decimal(4331270)	3
<i>Conversions</i>	4
<i>Details</i>	6
<i>Harmonies</i>	11
<i>Previews</i>	23
<i>Color Blindness Simulation</i>	26
<i>CSS Examples</i>	29

Color

Decimal(4331270)

Conversions

Conversions Part 1

Format	Color
Hex	421706
RGB	66, 23, 6
RGB Percent	26%, 9%, 2%
CMY	0.7412, 0.9098, 0.9765
CMYK	0.00, 0.65, 0.91, 0.74
HSL	17°, 83%, 14%
HSV	17°, 91%, 26%
XYZ	2.5860, 1.7842, 0.3804
YIQ	33.9190, 31.0850, 3.8290

Conversions

Conversions Part 2

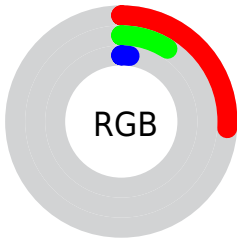
Format	Color
RYB	66, 30, 6
Decimal	4331270
CIELab	14.31, 19.73, 19.23
CIELCh	14, 27.555, 44.268
Yxy	1.7842, 0.5444, 0.3756
Android (android.graphics.Color)	4282521350 (0xFF421706)
YUV	33.9190, -13.7641, 28.1350
Hunter-Lab	13.3574, 11.1829, 7.6617

Details

The Decimal color **4331270** is a dark color, and the websafe version is hex **330000**. A complement of this color would be **405826**, and the grayscale version is **2236962**.

A 20% lighter version of the original color is **7750707**, and **0** is the 20% darker color. If you saturate the color by 10%, you get **4330240**, and if you desaturate by 10%, it is **4332557**.

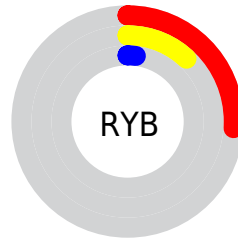
Distribution



Red (26%)

Green (9%)

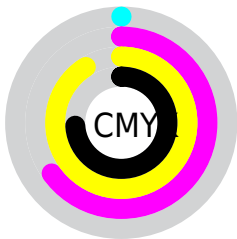
Blue (2%)



Red (26%)

Yellow (12%)

Blue (2%)

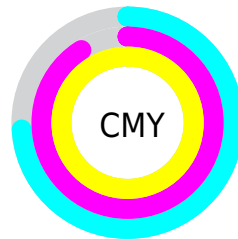


Cyan (0%)

Magenta (65%)

Yellow (91%)

Black (74%)



Cyan (74%)

Magenta (91%)

Yellow (98%)

Brightness & Saturation Gradients

These gradients show how the Decimal color 4331270 changes by changing the brightness by 10 percent. The first figure shows a shift by +10% for each color and the second figure -10%.

Similar to the brightness gradients but the following saturation gradients show a change of the Decimal color 4331270 by changing the saturation by 10% instead.

 4331270

 4331270

 16776679

 2752512


 7750707

 0

 9526346

 11301986

 13209211

 15116693

 16762031

 16769227

 4331270

 4331270

■ 4330240

■ 4332557

■ 4333587

■ 4334874

■ 4336160

■ 4337447

■ 4338478

■ 4339764

■ 4341051

■ 4342337

Harmonies

Analogous

The Analogous color harmony consists of three colors that are next to each other on the color wheel.



4657180



4331270



3546880

Triad

The Triadic color harmony groups three colors that are evenly spaced from another and form a triangle on the color wheel.



4331270



11289



664394

Complementary

The Complementary color scheme is a pair of colors which are on the opposite of each other on the color wheel.



4331270



405826

Split Complementary

Split-complementary colors differ from the complementary color scheme. The scheme consists of three colors, the original color and two neighbors of the complement color.



10569



4331270



11565

Square

The Square scheme is like the rectangle color scheme, but the four colors are evenly spaced on the color wheel.



4331270



993794



11327



3218240

Rectangle

The Rectangle color scheme consists of four colors that form a rectangle on the color wheel.



4331270



2892800



11327



9803

Sweetspot

The Sweet Spot groups the original color and five complimentary colors.



4331270



5719615



4326961



2826525



11250603



2829099

Same Dimension

The Same Dimension uses a secret algorithm to generate beautiful new colors.



4331270



5708032



4338950



2170654



6363904



14696448

Inverse Universe

The Inverse Universe completely reimagines the original color for something new.



405826



15959



398146



1974305



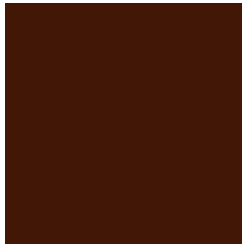
17761



41440

Previews

White Background



This preview shows how the Decimal color 4331270 looks on a white background.

Color Contrast Check

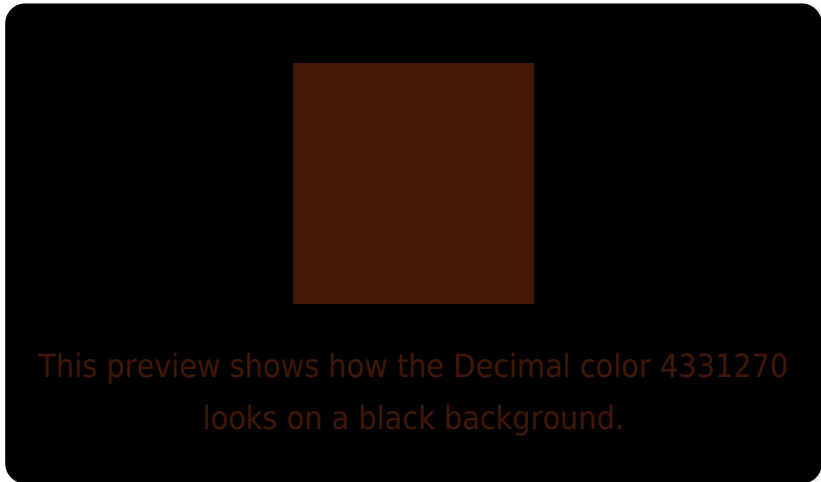
Large Text (above 18pt) WCAG AA ✓ Pass

Any Text WCAG AA ✓ Pass

Large Text (above 18pt) WCAG AAA ✓ Pass

Any Text WCAG AAA ✓ Pass

Black Background



Color Contrast Check

Large Text (above 18pt) WCAG AA × Fail

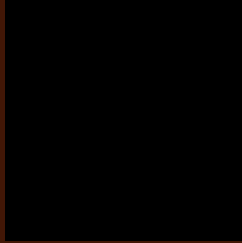
Any Text WCAG AA × Fail

Large Text (above 18pt) WCAG AAA × Fail

Any Text WCAG AAA × Fail

If you want to check with other color combinations, try the [Color Contrast Checker](#).

Decimal 4331270 Background



This preview shows how black text looks on a background with the Decimal color 4331270.

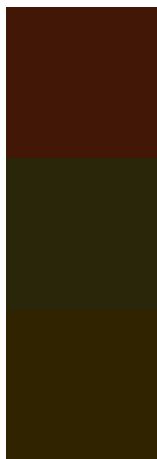


This preview shows how white text looks on a background with the Decimal color 4331270.

Color Blindness Simulation

Color vision deficiency is a very complex topic, and I could not describe the different causes any better than Wikipedia does, so if you want to learn more, you should check out their [article about color blindness](#).


Dichromacy



Original Color
4331270

Protanopia
2762250

Deuteranopia
3154944



Tritanopia
4331031

Trichromacy



Original Color
4331270

Protanomaly
3350793

Deuteranomaly
3612418

Tritanomaly
4331025

Monochromacy



Original Color
4331270

Achromatopsia
2236962

Achromatomaly
3022360

CSS Examples

Text

The CSS property to change the color of the text to Decimal 4331270 is called "color". The color property can be set on classes, ids or directly on the HTML element.

This example shows how text in the color #421706 looks like.

```
.text, #text, p{  
    color:#421706  
}
```

If you want to add a text shadow in that color use the text-shadow property, you can generate a text shadow directly with our [CSS Text Shadow Generator](#).

Here you see how black text with a 4 pixel #421706 colored shadow looks like.

```
.shadow{ text-shadow: 4px 4px 2px #421706
}
```

Border

The CSS property to change the border of an element to Decimal 4331270 is called "border". The border property can be set on classes, ids or directly on the HTML element.

This example shows the color as border, it can be applied via the CSS property "border" or "border-color".

```
.border, #border, table{ border:4px solid
#421706 }
```

If only the border color should be changed use the property `border-color`.

```
.border{ border-color:#421706 }
```

If you want to add a box shadow in that color use:

Here you see how a box with a 4 pixel #421706 colored shadow looks like.

```
.boxshadow{ -moz-box-shadow:4px 4px 4px  
4px #421706; -webkit-box-shadow:4px 4px  
4px 4px #421706; box-shadow:4px 4px 4px  
4px #421706 }
```

Background

The CSS property to change the background color of an element to Decimal 4331270 is called "background". The background property can be set on classes, ids or directly on the HTML element.

```
.background, #background, body{  
background:#421706 }
```

If only the background color should be changed can be used:

```
.background{ background-color:#421706 }
```

This example shows the color as background, it is applied via the CSS property "background".

To optimize and compress your CSS code, you can use our [online CSS compressor and optimizer](#) based on csstidy. If you want to create a linear or radial gradient as background or border, check our [CSS Gradient Generator](#).

Hey! You found this booklet
interesting? Support Converting
Colors with the new Membership
Option!

The pro membership hides all ads, plus gives you
double the colors in the color bucket, and more
awesome pro features!

[Learn more, Memberships starting at \\$2.50/m!](#)

**Follow me
on Twitter!**

@ConvertingColor