

# Converting Colors

Decimal(4332570)

Have a look what the booklet for  
Decimal(4332570) contains.

<b>Decimal(4332570)</b> .....	3
<i><b>Conversions</b></i> .....	4
<i><b>Details</b></i> .....	6
<i><b>Harmonies</b></i> .....	11
<i><b>Previews</b></i> .....	23
<i><b>Color Blindness Simulation</b></i> .....	26
<i><b>CSS Examples</b></i> .....	29

**Color**

**Decimal(4332570)**

# Conversions

## Conversions Part 1

<b>Format</b>	<b>Color</b>
Hex	421C1A
RGB	66, 28, 26
RGB Percent	26%, 11%, 10%
CMY	0.7412, 0.8902, 0.8980
CMYK	0.00, 0.58, 0.61, 0.74
HSL	3°, 43%, 18%
HSV	3°, 61%, 26%
XYZ	2.8485, 2.0633, 1.2254
YIQ	39.1340, 23.2900, 7.4340

# Conversions

## Conversions Part 2

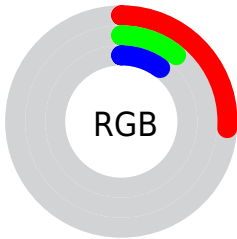
<b>Format</b>	<b>Color</b>
<b>R<sub>YB</sub></b>	66, 28, 26
Decimal	4332570
CIE <sub>Lab</sub>	15.82, 18.17, 10.04
CIE <sub>LCh</sub>	16, 20.757, 28.913
Yxy	2.0633, 0.4641, 0.3362
Android (android.graphics.Color)	4282522650 (0xFF421C1A)
YUV	39.1340, -6.4751, 23.5615
Hunter-Lab	14.3643, 10.2593, 4.9970

# Details

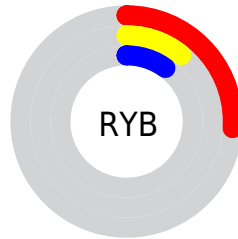
The Decimal color **4332570** is a dark color, and the websafe version is hex **330000**. A complement of this color would be **1720386**, and the grayscale version is **2565927**.

A 20% lighter version of the original color is **7686469**, and **0** is the 20% darker color. If you saturate the color by 10%, you get **4331027**, and if you desaturate by 10%, it is **4334113**.

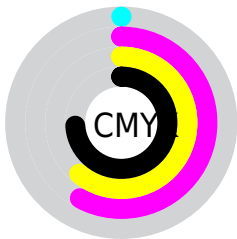
# Distribution



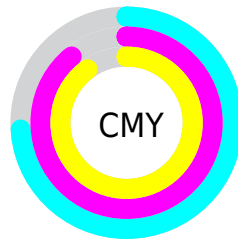
- Red (26%)
- Green (11%)
- Blue (10%)



- Red (26%)
- Yellow (11%)
- Blue (10%)



- Cyan (0%)
- Magenta (58%)
- Yellow (61%)
- Black (74%)



- Cyan (74%)
- Magenta (89%)
- Yellow (90%)

# Brightness & Saturation Gradients

These gradients show how the Decimal color 4332570 changes by changing the brightness by 10 percent. The first figure shows a shift by +10% for each color and the second figure -10%.

Similar to the brightness gradients but the following saturation gradients show a change of the Decimal color 4332570 by changing the saturation by 10% instead.





4332570



4332570

16777213



2885120



7686469



0



9396573



11172469



13014159



14856105



16763588



16770784



4332570



4332570

■ 4331027

■ 4334113

■ 4329229

■ 4335911

■ 4327686

■ 4337454

■ 4326144

■ 4338996

■ 4340539

■ 4342338

■ 4343880

■ 4345423

■ 4346965

# Harmonies

## Analogous

The Analogous color harmony consists of three colors that are next to each other on the color wheel.



4332329



4332570



3940621

# Triad

The Triadic color harmony groups three colors that are evenly spaced from another and form a triangle on the color wheel.



4332570



929048



403781

# Complementary

The Complementary color scheme is a pair of colors which are on the opposite of each other on the color wheel.



4332570



1720386

# Split Complementary

Split-complementary colors differ from the complementary color scheme. The scheme consists of three colors, the original color and two neighbors of the complement color.



11584



4332570



12070

# Square

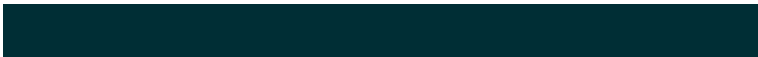
The Square scheme is like the rectangle color scheme, but the four colors are evenly spaced on the color wheel.



4332570



2239243



11829



2565185

# Rectangle

The Rectangle color scheme consists of four colors that form a rectangle on the color wheel.



4332570



3482887



11829



11076



# Sweetspot

The Sweet Spot groups the original color and five complimentary colors.



4332570



5720135



4332096



2826786



11250603



2829099



# Same Dimension

The Same Dimension uses a secret algorithm to generate beautiful new colors.



4332570



5708567



4337690



2170398



6358272



14682880



# Inverse Universe

The Inverse Universe completely reimagines the original color for something new.



1720386



1528919



1715266



1974561



23649

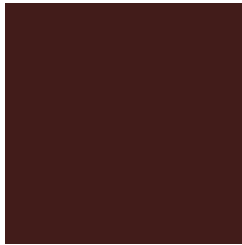


54752



# Previews

## White Background



This preview shows how the Decimal color 4332570 looks on a white background.

## Color Contrast Check

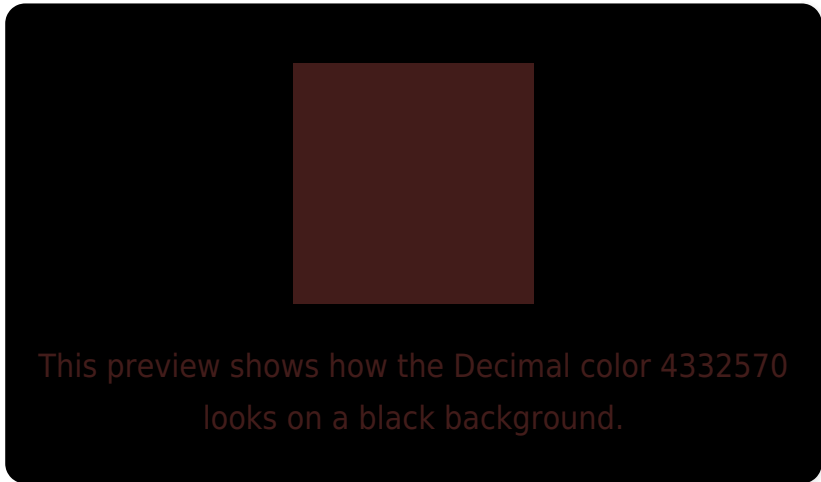
Large Text (above 18pt) WCAG AA ✓ Pass

Any Text WCAG AA ✓ Pass

Large Text (above 18pt) WCAG AAA ✓ Pass

Any Text WCAG AAA ✓ Pass

# Black Background



## Color Contrast Check

Large Text (above 18pt) WCAG AA × Fail

Any Text WCAG AA × Fail

Large Text (above 18pt) WCAG AAA × Fail

Any Text WCAG AAA × Fail

If you want to check with other color combinations, try the [Color Contrast Checker](#).



## Decimal 4332570 Background



This preview shows how black text looks on a background with the Decimal color 4332570.



This preview shows how white text looks on a background with the Decimal color 4332570.

# Color Blindness Simulation

Color vision deficiency is a very complex topic, and I could not describe the different causes any better than Wikipedia does, so if you want to learn more, you should check out their [article about color blindness](#).


## Dichromacy



**Original Color**  
4332570

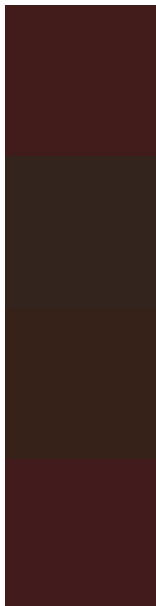
**Protanopia**  
2828319

**Deuteranopia**  
3221016



**Tritanopia**  
4332573

# Trichromacy



**Original Color**

4332570

**Protanomaly**

3351581

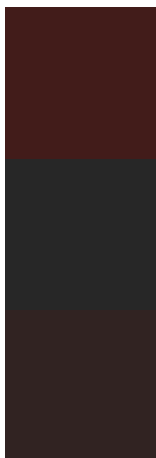
**Deuteranomaly**

3613209

**Tritanomaly**

4332572

# Monochromacy



**Original Color**

4332570

**Achromatopsia**

2565927

**Achromatomaly**

3220258

# CSS Examples

## Text

The CSS property to change the color of the text to Decimal 4332570 is called "color". The color property can be set on classes, ids or directly on the HTML element.

This example shows how text in the color #421C1A looks like.

```
.text, #text, p{  
    color:#421C1A  
}
```

If you want to add a text shadow in that color use the text-shadow property, you can generate a text shadow directly with our [CSS Text Shadow Generator](#).

Here you see how black text with a 4 pixel #421C1A colored shadow looks like.

```
.shadow{ text-shadow: 4px 4px 2px #421C1A
}
```

## Border

The CSS property to change the border of an element to Decimal 4332570 is called "border". The border property can be set on classes, ids or directly on the HTML element.

This example shows the color as border, it can be applied via the CSS property "border" or "border-color".

```
.border, #border, table{ border:4px solid
#421C1A }
```

If only the border color should be changed use the property `border-color`.

```
.border{ border-color:#421C1A }
```

If you want to add a box shadow in that color use:

Here you see how a box with a 4 pixel #421C1A colored shadow looks like.

```
.boxshadow{ -moz-box-shadow:4px 4px 4px  
4px #421C1A; -webkit-box-shadow:4px 4px  
4px 4px #421C1A; box-shadow:4px 4px 4px  
4px #421C1A }
```

# Background

The CSS property to change the background color of an element to Decimal 4332570 is called "background". The background property can be set on classes, ids or directly on the HTML element.

```
.background, #background, body{  
background:#421C1A }
```

If only the background color should be changed can be used:

```
.background{ background-color:#421C1A }
```

This example shows the color as background, it is applied via the CSS property "background".

To optimize and compress your CSS code, you can use our [online CSS compressor and optimizer](#) based on csstidy. If you want to create a linear or radial gradient as background or border, check our [CSS Gradient Generator](#).



# Hey! You found this booklet interesting? Support Converting Colors with the new Membership Option!

The pro membership hides all ads, plus gives you double the colors in the color bucket, and more awesome pro features!

**[Learn more, Memberships starting at \\$2.50/m!](#)**

**Follow me  
on Twitter!**

@ConvertingColor