

Converting Colors

Decimal(4338226)

Have a look what the booklet for
Decimal(4338226) contains.

Decimal(4338226)	3
<i>Conversions</i>	4
<i>Details</i>	6
<i>Harmonies</i>	11
<i>Previews</i>	23
<i>Color Blindness Simulation</i>	26
<i>CSS Examples</i>	29

Color

Decimal(4338226)

Conversions

Conversions Part 1

Format	Color
Hex	423232
RGB	66, 50, 50
RGB Percent	26%, 20%, 20%
CMY	0.7412, 0.8039, 0.8039
CMYK	0.00, 0.24, 0.24, 0.74
HSL	0°, 14%, 23%
HSV	0°, 24%, 26%
XYZ	3.9631, 3.6697, 3.5171
YIQ	54.7840, 9.5360, 3.3920

Conversions

Conversions Part 2

Format	Color
RYB	66, 50, 50
Decimal	4338226
CIELab	22.55, 7.23, 2.77
CIELCh	23, 7.737, 20.958
Yxy	3.6697, 0.3554, 0.3291
Android (android.graphics.Color)	4282528306 (0xFF423232)
YUV	54.7840, -2.3585, 9.8364
Hunter-Lab	19.1566, 3.4039, 2.5242

Details

The Decimal color **4338226** is a dark color, and the websafe version is hex **333333**. A complement of this color would be **3293762**, and the grayscale version is **3618615**.

A 20% lighter version of the original color is **7495776**, and **1639171** is the 20% darker color. If you saturate the color by 10%, you get **4336427**, and if you desaturate by 10%, it is **4340025**.

Distribution



Red (26%)

Green (20%)

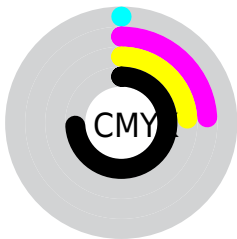
Blue (20%)



Red (26%)

Yellow (20%)

Blue (20%)



Cyan (0%)

Magenta (24%)

Yellow (24%)

Black (74%)



Cyan (74%)

Magenta (80%)

Yellow (80%)

Brightness & Saturation Gradients

These gradients show how the Decimal color 4338226 changes by changing the brightness by 10 percent. The first figure shows a shift by +10% for each color and the second figure -10%.

Similar to the brightness gradients but the following saturation gradients show a change of the Decimal color 4338226 by changing the saturation by 10% instead.

■ 4338226

■ 4338226

16777215

■ 2891037

■ 7495776

■ 1639171

■ 9206137

■ 0

■ 10916755

■ 12758445

■ 14600648

■ 16442853

■ 4338226

■ 4338226

■ 4336427

■ 4340025

■ 4334885

■ 4341567

■ 4333086

■ 4343366

■ 4331544

■ 4344908

■ 4329745

■ 4346707

■ 4327946

■ 4348506

■ 4326404

■ 4350048

■ 4325376

■ 4351847

■ 4353389

Harmonies

Analogous

The Analogous color harmony consists of three colors that are next to each other on the color wheel.



4207160



4338226



4207405

Triad

The Triadic color harmony groups three colors that are evenly spaced from another and form a triangle on the color wheel.



4338226



3094574



2963265

Complementary

The Complementary color scheme is a pair of colors which are on the opposite of each other on the color wheel.



4338226



3293762

Split Complementary

Split-complementary colors differ from the complementary color scheme. The scheme consists of three colors, the original color and two neighbors of the complement color.



2635839



4338226



2767156

Square

The Square scheme is like the rectangle color scheme, but the four colors are evenly spaced on the color wheel.



4338226



3553067



2570554



3487041

Rectangle

The Rectangle color scheme consists of four colors that form a rectangle on the color wheel.



4338226



4076587



2570554



2832193

Sweetspot

The Sweet Spot groups the original color and five complimentary colors.



4338226



5722449



4338242



2828328



11250603



2829099

Same Dimension

The Same Dimension uses a secret algorithm to generate beautiful new colors.



4338226



5717566



4340274



2170398



6356992



14680064

Inverse Universe

The Inverse Universe completely reimagines the original color for something new.



3293762



4085591



3291714



1974561



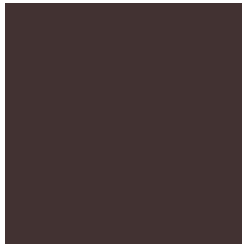
24929



57568

Previews

White Background



This preview shows how the Decimal color 4338226 looks on a white background.

Color Contrast Check

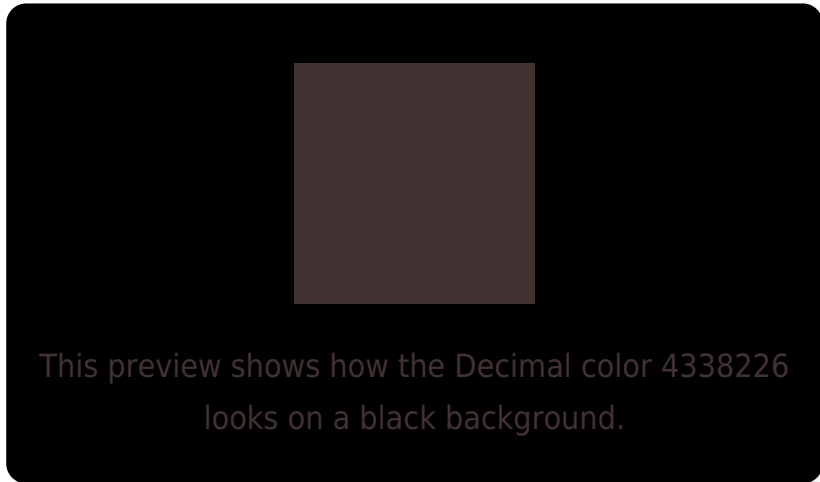
Large Text (above 18pt) WCAG AA ✓ Pass

Any Text WCAG AA ✓ Pass

Large Text (above 18pt) WCAG AAA ✓ Pass

Any Text WCAG AAA ✓ Pass

Black Background



Color Contrast Check

Large Text (above 18pt) WCAG AA × Fail

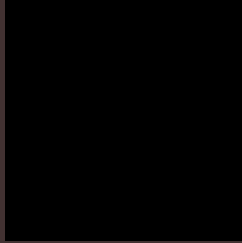
Any Text WCAG AA × Fail

Large Text (above 18pt) WCAG AAA × Fail

Any Text WCAG AAA × Fail

If you want to check with other color combinations, try the [Color Contrast Checker](#).

Decimal 4338226 Background



This preview shows how black text looks on a background with the Decimal color 4338226.

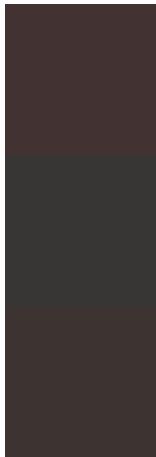


This preview shows how white text looks on a background with the Decimal color 4338226.

Color Blindness Simulation

Color vision deficiency is a very complex topic, and I could not describe the different causes any better than Wikipedia does, so if you want to learn more, you should check out their [article about color blindness](#).

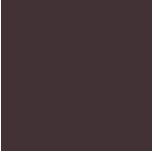
Dichromacy



Original Color
4338226

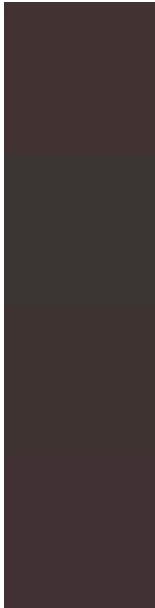
Protanopia
3618356

Deuteranopia
4011058



Tritanopia
4337973

Trichromacy



Original Color

4338226

Protanomaly

3880243

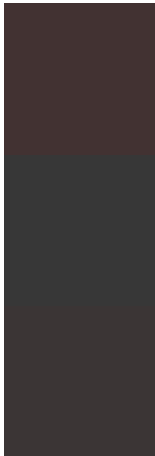
Deuteranomaly

4141874

Tritanomaly

4337972

Monochromacy



Original Color

4338226

Achromatopsia

3618615

Achromatomaly

3880245

CSS Examples

Text

The CSS property to change the color of the text to Decimal 4338226 is called "color". The color property can be set on classes, ids or directly on the HTML element.

This example shows how text in the color #423232 looks like.

```
.text, #text, p{  
  color:#423232  
}
```

If you want to add a text shadow in that color use the text-shadow property, you can generate a text shadow directly with our [CSS Text Shadow Generator](#).

Here you see how black text with a 4 pixel #423232 colored shadow looks like.

```
.shadow{ text-shadow: 4px 4px 2px #423232
}
```

Border

The CSS property to change the border of an element to Decimal 4338226 is called "border". The border property can be set on classes, ids or directly on the HTML element.

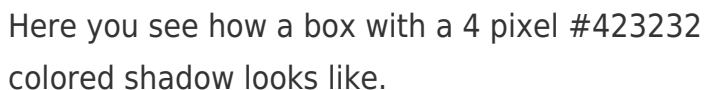
This example shows the color as border, it can be applied via the CSS property "border" or "border-color".

```
.border, #border, table{ border:4px solid
#423232 }
```

If only the border color should be changed use the property `border-color`.

```
.border{ border-color:#423232 }
```

If you want to add a box shadow in that color use:



Here you see how a box with a 4 pixel #423232 colored shadow looks like.

```
.boxshadow{ -moz-box-shadow:4px 4px 4px  
4px #423232; -webkit-box-shadow:4px 4px  
4px 4px #423232; box-shadow:4px 4px 4px  
4px #423232 }
```

Background

The CSS property to change the background color of an element to Decimal 4338226 is called "background". The background property can be set on classes, ids or directly on the HTML element.

```
.background, #background, body{  
background:#423232 }
```

If only the background color should be changed can be used:

```
.background{ background-color:#423232 }
```

This example shows the color as background, it is applied via the CSS property "background".

To optimize and compress your CSS code, you can use our [online CSS compressor and optimizer](#) based on csstidy. If you want to create a linear or radial gradient as background or border, check our [CSS Gradient Generator](#).

Hey! You found this booklet interesting? Support Converting Colors with the new Membership Option!

The pro membership hides all ads, plus gives you double the colors in the color bucket, and more awesome pro features!

[Learn more, Memberships starting at \\$2.50/m!](#)

**Follow me
on Twitter!**

@ConvertingColor