

Converting Colors

Decimal(4532519)

Have a look what the booklet for
Decimal(4532519) contains.

Decimal(4532519)	3
<i>Conversions</i>	4
<i>Details</i>	6
<i>Harmonies</i>	11
<i>Previews</i>	23
<i>Color Blindness Simulation</i>	26
<i>CSS Examples</i>	29

Color

Decimal(4532519)

Conversions

Conversions Part 1

Format	Color
Hex	452927
RGB	69, 41, 39
RGB Percent	27%, 16%, 15%
CMY	0.7294, 0.8392, 0.8471
CMYK	0.00, 0.41, 0.43, 0.73
HSL	4°, 28%, 21%
HSV	4°, 43%, 27%
XYZ	3.6134, 2.9976, 2.3076
YIQ	49.1440, 17.3300, 5.3140

Conversions

Conversions Part 2

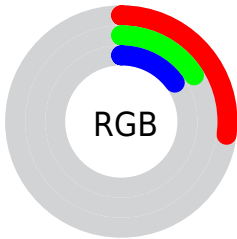
Format	Color
R _Y B	69, 41, 39
Decimal	4532519
CIE Lab	20.03, 12.80, 6.78
CIE LCh	20, 14.489, 27.904
Yxy	2.9976, 0.4052, 0.3361
Android (android.graphics.Color)	4282722599 (0xFF452927)
YUV	49.1440, -5.0010, 17.4137
Hunter-Lab	17.3135, 6.9550, 4.2171

Details

The Decimal color **4532519** is a dark color, and the websafe version is hex **663333**. A complement of this color would be **2573125**, and the grayscale version is **3223857**.

A 20% lighter version of the original color is **7821140**, and **1703937** is the 20% darker color. If you saturate the color by 10%, you get **4530976**, and if you desaturate by 10%, it is **4534062**.

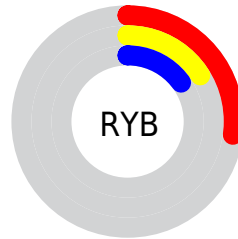
Distribution



Red (27%)

Green (16%)

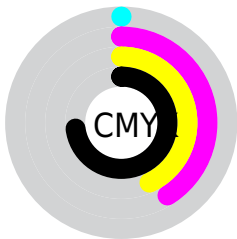
Blue (15%)



Red (27%)

Yellow (16%)

Blue (15%)

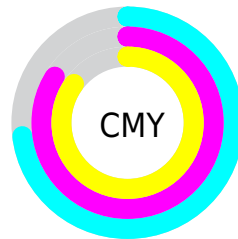


Cyan (0%)

Magenta (41%)

Yellow (43%)

Black (73%)



Cyan (73%)

Magenta (84%)

Yellow (85%)

Brightness & Saturation Gradients

These gradients show how the Decimal color 4532519 changes by changing the brightness by 10 percent. The first figure shows a shift by +10% for each color and the second figure -10%.

Similar to the brightness gradients but the following saturation gradients show a change of the Decimal color 4532519 by changing the saturation by 10% instead.



4532519



4532519

16777215



3019795



7821140



1703937



9531244



0



11241605



13083551



14925498



16767702



16774898



4532519



4532519

■ 4530976

■ 4534062

■ 4529177

■ 4535861

■ 4527634

■ 4537404

■ 4525835

■ 4539203

■ 4524292

■ 4540746

■ 4523264

■ 4542544

■ 4544087

■ 4545886

■ 4547429

Harmonies

Analogous

The Analogous color harmony consists of three colors that are next to each other on the color wheel.



4466738



4532519



4271135

Triad

The Triadic color harmony groups three colors that are evenly spaced from another and form a triangle on the color wheel.



4532519



2176293



2110021

Complementary

The Complementary color scheme is a pair of colors which are on the opposite of each other on the color wheel.



4532519



2573125

Split Complementary

Split-complementary colors differ from the complementary color scheme. The scheme consists of three colors, the original color and two neighbors of the complement color.



1061954



4532519



1324591

Square

The Square scheme is like the rectangle color scheme, but the four colors are evenly spaced on the color wheel.



4532519



2962205



669242



3223107

Rectangle

The Rectangle color scheme consists of four colors that form a rectangle on the color wheel.



4532519



3878428



669242



1782597

Sweetspot

The Sweet Spot groups the original color and five complimentary colors.



4532519



5852750



4532035



3024679



11382189



3026478

Same Dimension

The Same Dimension uses a secret algorithm to generate beautiful new colors.



4532519



5844523



4536359



2367520



6489856



14880512

Inverse Universe

The Inverse Universe completely reimagines the original color for something new.



2573125



2840153



2569285



2106148



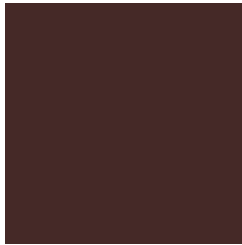
23907



54499

Previews

White Background



This preview shows how the Decimal color 4532519 looks on a white background.

Color Contrast Check

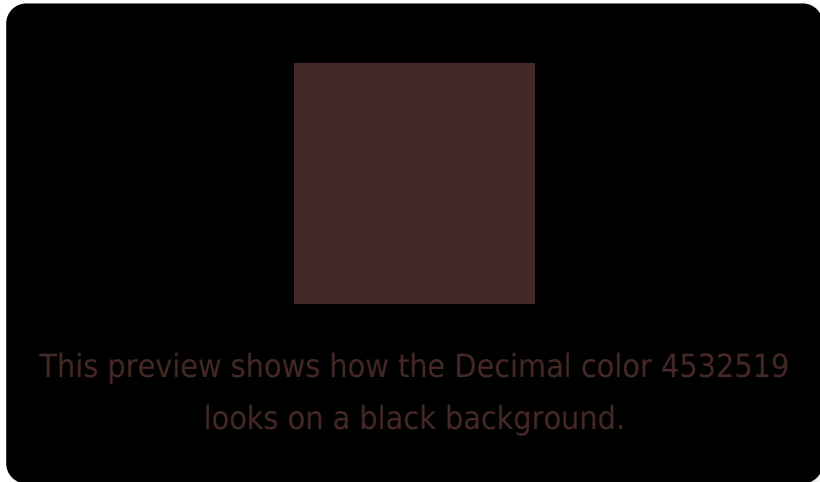
Large Text (above 18pt) WCAG AA ✓ Pass

Any Text WCAG AA ✓ Pass

Large Text (above 18pt) WCAG AAA ✓ Pass

Any Text WCAG AAA ✓ Pass

Black Background



Color Contrast Check

Large Text (above 18pt) WCAG AA × Fail

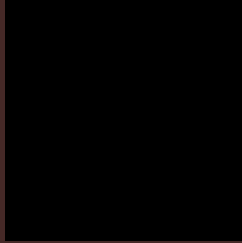
Any Text WCAG AA × Fail

Large Text (above 18pt) WCAG AAA × Fail

Any Text WCAG AAA × Fail

If you want to check with other color combinations, try the [Color Contrast Checker](#).

Decimal 4532519 Background



This preview shows how black text looks on a background with the Decimal color 4532519.



This preview shows how white text looks on a background with the Decimal color 4532519.

Color Blindness Simulation

Color vision deficiency is a very complex topic, and I could not describe the different causes any better than Wikipedia does, so if you want to learn more, you should check out their [article about color blindness](#).

Dichromacy



Original Color
4532519

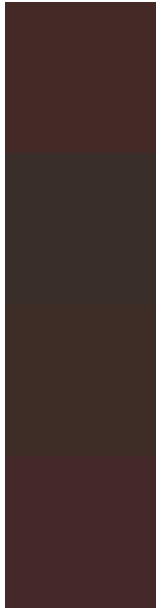
Protanopia
3354923

Deuteranopia
3747622



Tritanopia
4532267

Trichromacy



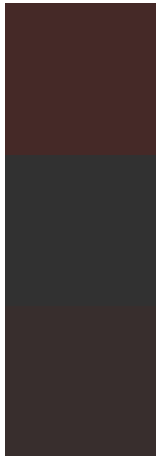
Original Color
4532519

Protanomaly
3812906

Deuteranomaly
4009254

Tritanomaly
4532266

Monochromacy



Original Color
4532519

Achromatopsia
3223857

Achromatomaly
3681837

CSS Examples

Text

The CSS property to change the color of the text to Decimal 4532519 is called "color". The color property can be set on classes, ids or directly on the HTML element.

This example shows how text in the color #452927 looks like.

```
.text, #text, p{  
    color:#452927  
}
```

If you want to add a text shadow in that color use the text-shadow property, you can generate a text shadow directly with our [CSS Text Shadow Generator](#).

Here you see how black text with a 4 pixel #452927 colored shadow looks like.

```
.shadow{ text-shadow: 4px 4px 2px #452927
}
```

Border

The CSS property to change the border of an element to Decimal 4532519 is called "border". The border property can be set on classes, ids or directly on the HTML element.

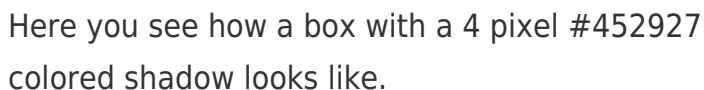
This example shows the color as border, it can be applied via the CSS property "border" or "border-color".

```
.border, #border, table{ border:4px solid
#452927 }
```

If only the border color should be changed use the property `border-color`.

```
.border{ border-color:#452927 }
```

If you want to add a box shadow in that color use:



Here you see how a box with a 4 pixel #452927 colored shadow looks like.

```
.boxshadow{ -moz-box-shadow:4px 4px 4px  
4px #452927; -webkit-box-shadow:4px 4px  
4px 4px #452927; box-shadow:4px 4px 4px  
4px #452927 }
```

Background

The CSS property to change the background color of an element to Decimal 4532519 is called "background". The background property can be set on classes, ids or directly on the HTML element.

```
.background, #background, body{  
background:#452927 }
```

If only the background color should be changed can be used:

```
.background{ background-color:#452927 }
```

This example shows the color as background, it is applied via the CSS property "background".

To optimize and compress your CSS code, you can use our [online CSS compressor and optimizer](#) based on csstidy. If you want to create a linear or radial gradient as background or border, check our [CSS Gradient Generator](#).

Hey! You found this booklet interesting? Support Converting Colors with the new Membership Option!

The pro membership hides all ads, plus gives you double the colors in the color bucket, and more awesome pro features!

[Learn more, Memberships starting at \\$2.50/m!](#)

**Follow me
on Twitter!**

@ConvertingColor