

# Converting Colors

Decimal(4533038)

Have a look what the booklet for  
Decimal(4533038) contains.

<b>Decimal(4533038)</b> .....	3
<i><b>Conversions</b></i> .....	4
<i><b>Details</b></i> .....	6
<i><b>Harmonies</b></i> .....	11
<i><b>Previews</b></i> .....	23
<i><b>Color Blindness Simulation</b></i> .....	26
<i><b>CSS Examples</b></i> .....	29

# Color

**Decimal(4533038)**

# Conversions

## Conversions Part 1

Format	Color
Hex	452B2E
RGB	69, 43, 46
RGB Percent	27%, 17%, 18%
CMY	0.7294, 0.8314, 0.8196
CMYK	0.00, 0.38, 0.33, 0.73
HSL	353°, 23%, 22%
HSV	353°, 38%, 27%
XYZ	3.8113, 3.1902, 2.9997
YIQ	51.1160, 14.5330, 6.4450

# Conversions

## Conversions Part 2

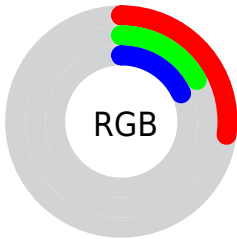
<b>Format</b>	<b>Color</b>
<b>RYB</b>	69, 43, 46
Decimal	4533038
CIELab	20.79, 12.56, 3.03
CIELCh	21, 12.920, 13.550
Yxy	3.1902, 0.3811, 0.3190
Android (android.graphics.Color)	4282723118 (0xFF452B2E)
YUV	51.1160, -2.5222, 15.6843
Hunter-Lab	17.8612, 6.8317, 2.5455

# Details

The Decimal color **4533038** is a dark color, and the websafe version is hex **333333**. A complement of this color would be **2835778**, and the grayscale version is **3355443**.

A 20% lighter version of the original color is **7756124**, and **1835008** is the 20% darker color. If you saturate the color by 10%, you get **4531240**, and if you desaturate by 10%, it is **4534836**.

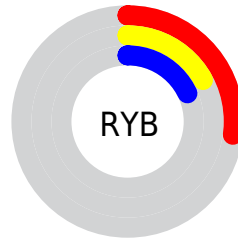
# Distribution



Red (27%)

Green (17%)

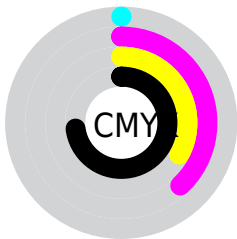
Blue (18%)



Red (27%)

Yellow (17%)

Blue (18%)

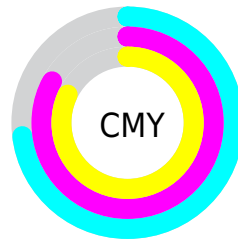


Cyan (0%)

Magenta (38%)

Yellow (33%)

Black (73%)



Cyan (73%)

Magenta (83%)

Yellow (82%)

# Brightness & Saturation Gradients

These gradients show how the Decimal color 4533038 changes by changing the brightness by 10 percent. The first figure shows a shift by +10% for each color and the second figure -10%.

Similar to the brightness gradients but the following saturation gradients show a change of the Decimal color 4533038 by changing the saturation by 10% instead.





4533038



4533038

16777215



3020313



7756124



1835008



9466228



0



11242382



13018536



14860483



16768223



16775676



4533038



4533038

■ 4531240

■ 4534836

■ 4529442

■ 4536634

■ 4527644

■ 4538432

■ 4525846

■ 4540230

■ 4524303

■ 4542029

■ 4522505

■ 4543571

■ 4521992

■ 4545369

■ 4547167

■ 4548965

# Harmonies

## Analogous

The Analogous color harmony consists of three colors that are next to each other on the color wheel.



4271160



4533038



4402469

# Triad

The Triadic color harmony groups three colors that are evenly spaced from another and form a triangle on the color wheel.



4533038



2766116



1979460

# Complementary

The Complementary color scheme is a pair of colors which are on the opposite of each other on the color wheel.



4533038



2835778

# Split Complementary

Split-complementary colors differ from the complementary color scheme. The scheme consists of three colors, the original color and two neighbors of the complement color.



1324607



4533038



2045740

# Square

The Square scheme is like the rectangle color scheme, but the four colors are evenly spaced on the color wheel.



4533038



3420959



1390390



2896196

# Rectangle

The Rectangle color scheme consists of four colors that form a rectangle on the color wheel.



4533038



4206369



1390390



1717571



# Sweetspot

The Sweet Spot groups the original color and five complimentary colors.



4533038



5853009



4336453



3024937



11382189



3026478



# Same Dimension

The Same Dimension uses a secret algorithm to generate beautiful new colors.



4533038



5845302



4535595



2367521



6488075



14876698



# Inverse Universe

The Inverse Universe completely reimagines the original color for something new.



4533038



5845302



2833221



2367521



6488075

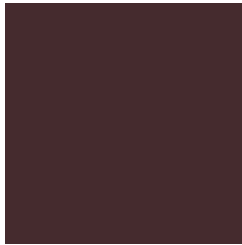


14876698



# Previews

## White Background



This preview shows how the Decimal color 4533038 looks on a white background.

## Color Contrast Check

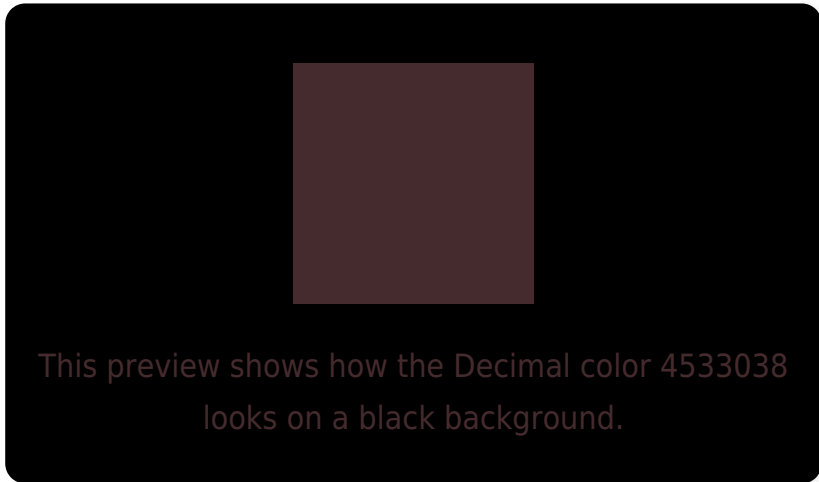
Large Text (above 18pt) WCAG AA ✓ Pass

Any Text WCAG AA ✓ Pass

Large Text (above 18pt) WCAG AAA ✓ Pass

Any Text WCAG AAA ✓ Pass

# Black Background



## Color Contrast Check

Large Text (above 18pt) WCAG AA × Fail

Any Text WCAG AA × Fail

Large Text (above 18pt) WCAG AAA × Fail

Any Text WCAG AAA × Fail

If you want to check with other color combinations, try the [Color Contrast Checker](#).



## Decimal 4533038 Background



This preview shows how black text looks on a background with the Decimal color 4533038.

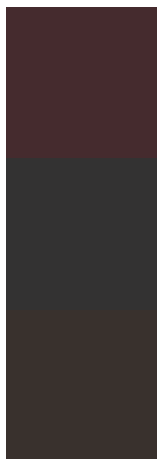


This preview shows how white text looks on a background with the Decimal color 4533038.

# Color Blindness Simulation

Color vision deficiency is a very complex topic, and I could not describe the different causes any better than Wikipedia does, so if you want to learn more, you should check out their [article about color blindness](#).

## Dichromacy



**Original Color**  
4533038

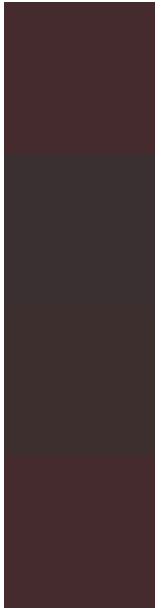
**Protanopia**  
3355186

**Deuteranopia**  
3748141



**Tritanopia**  
4533038

# Trichromacy



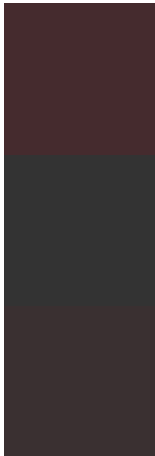
**Original Color**  
4533038

**Protanomaly**  
3813169

**Deuteranomaly**  
4009773

**Tritanomaly**  
4533038

# Monochromacy



**Original Color**  
4533038

**Achromatopsia**  
3355443

**Achromatomaly**  
3813425

# CSS Examples

## Text

The CSS property to change the color of the text to Decimal 4533038 is called "color". The color property can be set on classes, ids or directly on the HTML element.

This example shows how text in the color #452B2E looks like.

```
.text, #text, p{  
    color:#452B2E  
}
```

If you want to add a text shadow in that color use the text-shadow property, you can generate a text shadow directly with our [CSS Text Shadow Generator](#).

Here you see how black text with a 4 pixel #452B2E colored shadow looks like.

```
.shadow{ text-shadow: 4px 4px 2px #452B2E
}
```

## Border

The CSS property to change the border of an element to Decimal 4533038 is called "border". The border property can be set on classes, ids or directly on the HTML element.

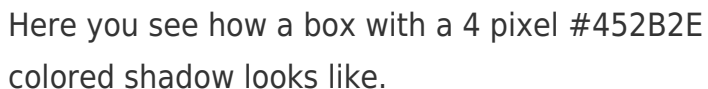
This example shows the color as border, it can be applied via the CSS property "border" or "border-color".

```
.border, #border, table{ border:4px solid
#452B2E }
```

If only the border color should be changed use the property `border-color`.

```
.border{ border-color:#452B2E }
```

If you want to add a box shadow in that color use:



Here you see how a box with a 4 pixel #452B2E colored shadow looks like.

```
.boxshadow{ -moz-box-shadow:4px 4px 4px  
4px #452B2E; -webkit-box-shadow:4px 4px  
4px 4px #452B2E; box-shadow:4px 4px 4px  
4px #452B2E }
```

# Background

The CSS property to change the background color of an element to Decimal 4533038 is called "background". The background property can be set on classes, ids or directly on the HTML element.

```
.background, #background, body{  
background:#452B2E }
```

If only the background color should be changed can be used:

```
.background{ background-color:#452B2E }
```

This example shows the color as background, it is applied via the CSS property "background".

To optimize and compress your CSS code, you can use our [online CSS compressor and optimizer](#) based on csstidy. If you want to create a linear or radial gradient as background or border, check our [CSS Gradient Generator](#).



Hey! You found this booklet interesting? Support Converting Colors with the new Membership Option!

The pro membership hides all ads, plus gives you double the colors in the color bucket, and more awesome pro features!

**[Learn more, Memberships starting at \\$2.50/m!](#)**

**Follow me  
on Twitter!**

@ConvertingColor