

Converting Colors

Decimal(4726814)

Have a look what the booklet for
Decimal(4726814) contains.

Decimal(4726814)	3
<i>Conversions</i>	4
<i>Details</i>	6
<i>Harmonies</i>	11
<i>Previews</i>	23
<i>Color Blindness Simulation</i>	26
<i>CSS Examples</i>	29

Color

Decimal(4726814)

Conversions

Conversions Part 1

Format	Color
Hex	48201E
RGB	72, 32, 30
RGB Percent	28%, 13%, 12%
CMY	0.7176, 0.8745, 0.8824
CMYK	0.00, 0.56, 0.58, 0.72
HSL	3°, 41%, 20%
HSV	3°, 58%, 28%
XYZ	3.4233, 2.5045, 1.5313
YIQ	43.7320, 24.4820, 7.8580

Conversions

Conversions Part 2

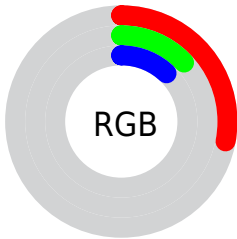
Format	Color
R_{YB}	72, 32, 30
Decimal	4726814
CIE Lab	17.94, 18.83, 10.24
CIE LCh	18, 21.438, 28.531
Yxy	2.5045, 0.4589, 0.3358
Android (android.graphics.Color)	4282916894 (0xFF48201E)
YUV	43.7320, -6.7699, 24.7910
Hunter-Lab	15.8255, 10.9180, 5.3410

Details

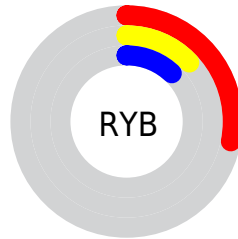
The Decimal color **4726814** is a dark color, and the websafe version is hex **663333**. A complement of this color would be **1984072**, and the grayscale version is **2894892**.

A 20% lighter version of the original color is **8080714**, and **1441792** is the 20% darker color. If you saturate the color by 10%, you get **4725015**, and if you desaturate by 10%, it is **4728613**.

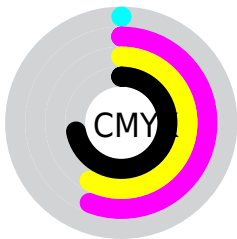
Distribution



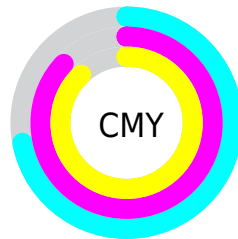
- Red (28%)
- Green (13%)
- Blue (12%)



- Red (28%)
- Yellow (13%)
- Blue (12%)



- Cyan (0%)
- Magenta (56%)
- Yellow (58%)
- Black (72%)



- Cyan (72%)
- Magenta (87%)
- Yellow (88%)

Brightness & Saturation Gradients

These gradients show how the Decimal color 4726814 changes by changing the brightness by 10 percent. The first figure shows a shift by +10% for each color and the second figure -10%.

Similar to the brightness gradients but the following saturation gradients show a change of the Decimal color 4726814 by changing the saturation by 10% instead.



4726814



4726814

16777215



3148549



8080714



1441792



9856609



0



11632506



13474196



15381679



16764874



16772326



4726814



4726814

■ 4725015

■ 4728613

■ 4723216

■ 4730412

■ 4721416

■ 4732212

■ 4719873

■ 4733755

■ 4719360

■ 4735554

■ 4737353

■ 4739152

■ 4740952

■ 4742751

Harmonies

Analogous

The Analogous color harmony consists of three colors that are next to each other on the color wheel.



4661037



4726814



4269330

Triad

The Triadic color harmony groups three colors that are evenly spaced from another and form a triangle on the color wheel.



4726814



1192475



667211

Complementary

The Complementary color scheme is a pair of colors which are on the opposite of each other on the color wheel.



4726814



1984072

Split Complementary

Split-complementary colors differ from the complementary color scheme. The scheme consists of three colors, the original color and two neighbors of the complement color.



12870



4726814



13355

Square

The Square scheme is like the rectangle color scheme, but the four colors are evenly spaced on the color wheel.



4726814



2502415



13114



2828359

Rectangle

The Rectangle color scheme consists of four colors that form a rectangle on the color wheel.



4726814



3811596



13114



12106

Sweetspot

The Sweet Spot groups the original color and five complimentary colors.



4726814



6180429



4726343



3155494



11579568



3158064

Same Dimension

The Same Dimension uses a secret algorithm to generate beautiful new colors.



4726814



6168348



4731934



2367520



6489344



14879488

Inverse Universe

The Inverse Universe completely reimagines the original color for something new.



1984072



1858398



1978952



2106404



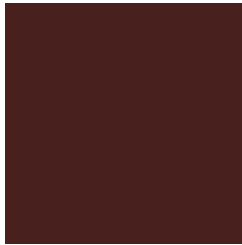
24419



55523

Previews

White Background



This preview shows how the Decimal color 4726814 looks on a white background.

Color Contrast Check

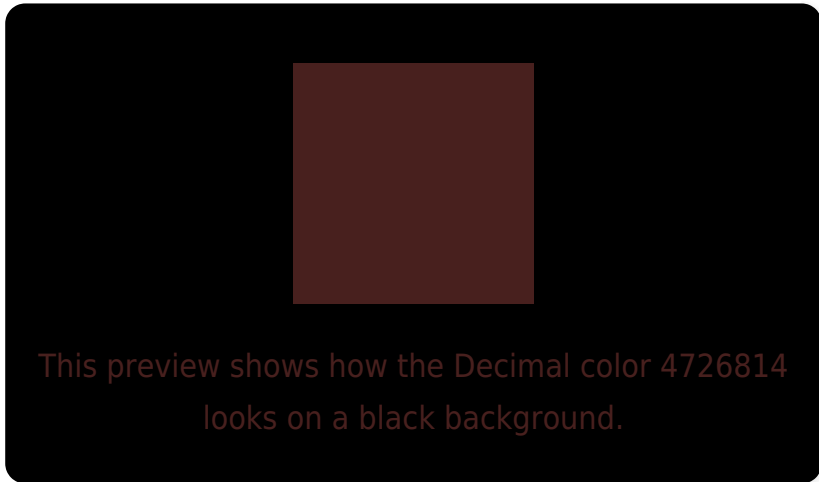
Large Text (above 18pt) WCAG AA ✓ Pass

Any Text WCAG AA ✓ Pass

Large Text (above 18pt) WCAG AAA ✓ Pass

Any Text WCAG AAA ✓ Pass

Black Background



Color Contrast Check

Large Text (above 18pt) WCAG AA × Fail

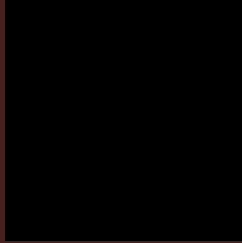
Any Text WCAG AA × Fail

Large Text (above 18pt) WCAG AAA × Fail

Any Text WCAG AAA × Fail

If you want to check with other color combinations, try the [Color Contrast Checker](#).

Decimal 4726814 Background



This preview shows how black text looks on a background with the Decimal color 4726814.



This preview shows how white text looks on a background with the Decimal color 4726814.

Color Blindness Simulation

Color vision deficiency is a very complex topic, and I could not describe the different causes any better than Wikipedia does, so if you want to learn more, you should check out their [article about color blindness](#).

Dichromacy

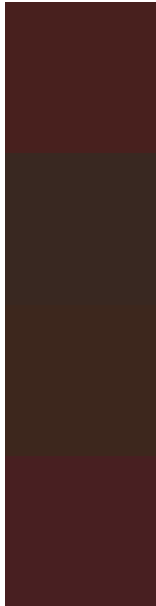


Original Color
4726814

Protanopia
3157283

Deuteranopia
3549980

Trichromacy



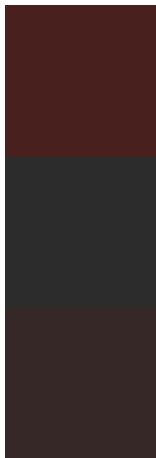
Original Color
4726814

Protanomaly
3745825

Deuteranomaly
4007709

Tritanomaly
4726561

Monochromacy



Original Color
4726814

Achromatopsia
2894892

Achromatomaly
3549223

CSS Examples

Text

The CSS property to change the color of the text to Decimal 4726814 is called "color". The color property can be set on classes, ids or directly on the HTML element.

This example shows how text in the color #48201E looks like.

```
.text, #text, p{  
    color:#48201E  
}
```

If you want to add a text shadow in that color use the text-shadow property, you can generate a text shadow directly with our [CSS Text Shadow Generator](#).

Here you see how black text with a 4 pixel #48201E colored shadow looks like.

```
.shadow{ text-shadow: 4px 4px 2px #48201E
}
```

Border

The CSS property to change the border of an element to Decimal 4726814 is called "border". The border property can be set on classes, ids or directly on the HTML element.

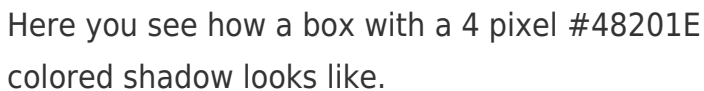
This example shows the color as border, it can be applied via the CSS property "border" or "border-color".

```
.border, #border, table{ border:4px solid
#48201E }
```

If only the border color should be changed use the property `border-color`.

```
.border{ border-color:#48201E }
```

If you want to add a box shadow in that color use:



Here you see how a box with a 4 pixel #48201E colored shadow looks like.

```
.boxshadow{ -moz-box-shadow:4px 4px 4px  
4px #48201E; -webkit-box-shadow:4px 4px  
4px 4px #48201E; box-shadow:4px 4px 4px  
4px #48201E }
```

Background

The CSS property to change the background color of an element to Decimal 4726814 is called "background". The background property can be set on classes, ids or directly on the HTML element.

```
.background, #background, body{  
background:#48201E }
```

If only the background color should be changed can be used:

```
.background{ background-color:#48201E }
```

This example shows the color as background, it is applied via the CSS property "background".

To optimize and compress your CSS code, you can use our [online CSS compressor and optimizer](#) based on csstidy. If you want to create a linear or radial gradient as background or border, check our [CSS Gradient Generator](#).

Hey! You found this booklet interesting? Support Converting Colors with the new Membership Option!

The pro membership hides all ads, plus gives you double the colors in the color bucket, and more awesome pro features!

[Learn more, Memberships starting at \\$2.50/m!](#)

**Follow me
on Twitter!**

@ConvertingColor