

Converting Colors

Decimal(4922910)

Have a look what the booklet for
Decimal(4922910) contains.

Decimal(4922910)	3
<i>Conversions</i>	4
<i>Details</i>	6
<i>Harmonies</i>	11
<i>Previews</i>	23
<i>Color Blindness Simulation</i>	26
<i>CSS Examples</i>	29

Color

Decimal(4922910)

Conversions

Conversions Part 1

Format	Color
Hex	4B1E1E
RGB	75, 30, 30
RGB Percent	29%, 12%, 12%
CMY	0.7059, 0.8824, 0.8824
CMYK	0.00, 0.60, 0.60, 0.71
HSL	0°, 43%, 21%
HSV	0°, 60%, 29%
XYZ	3.6003, 2.5181, 1.5246
YIQ	43.4550, 26.8200, 9.5400

Conversions

Conversions Part 2

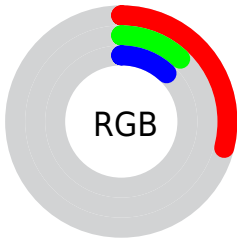
Format	Color
R_{YB}	75, 30, 30
Decimal	4922910
CIE Lab	18.00, 21.37, 10.42
CIE LCh	18, 23.770, 25.990
Yxy	2.5181, 0.4711, 0.3295
Android (android.graphics.Color)	4283112990 (0xFF4B1E1E)
YUV	43.4550, -6.6333, 27.6650
Hunter-Lab	15.8686, 12.7278, 5.4117

Details

The Decimal color **4922910** is a dark color, and the websafe version is hex **663333**. A complement of this color would be **1985355**, and the grayscale version is **2894892**.

A 20% lighter version of the original color is **8342602**, and **1703937** is the 20% darker color. If you saturate the color by 10%, you get **4921111**, and if you desaturate by 10%, it is **4924966**.

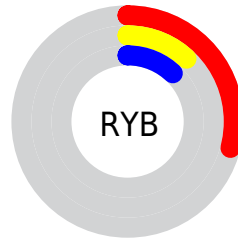
Distribution



Red (29%)

Green (12%)

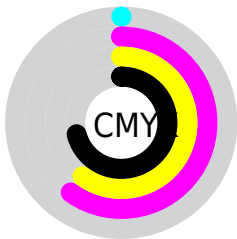
Blue (12%)



Red (29%)

Yellow (12%)

Blue (12%)

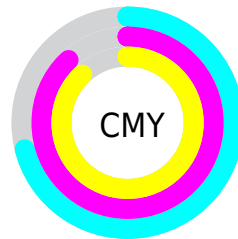


Cyan (0%)

Magenta (60%)

Yellow (60%)

Black (71%)



Cyan (71%)

Magenta (88%)

Yellow (88%)

Brightness & Saturation Gradients

These gradients show how the Decimal color 4922910 changes by changing the brightness by 10 percent. The first figure shows a shift by +10% for each color and the second figure -10%.

Similar to the brightness gradients but the following saturation gradients show a change of the Decimal color 4922910 by changing the saturation by 10% instead.



4922910



4922910

16777215



3344389



8342602



1703937



10118241



0



11894138



13735828



15643311



16764618



16771814



4922910



4922910

■ 4921111

■ 4924966

■ 4919055

■ 4926765

■ 4916999

■ 4928821

■ 4915200

■ 4930620

■ 4932676

■ 4934475

■ 4936531

■ 4938330

■ 4940386

Harmonies

Analogous

The Analogous color harmony consists of three colors that are next to each other on the color wheel.



4857135



4922910



4465679

Triad

The Triadic color harmony groups three colors that are evenly spaced from another and form a triangle on the color wheel.



4922910



1061656



12110

Complementary

The Complementary color scheme is a pair of colors which are on the opposite of each other on the color wheel.



4922910



1985355

Split Complementary

Split-complementary colors differ from the complementary color scheme. The scheme consists of three colors, the original color and two neighbors of the complement color.



13128



4922910



13353

Square

The Square scheme is like the rectangle color scheme, but the four colors are evenly spaced on the color wheel.



4922910



2567946



13371



2697291

Rectangle

The Rectangle color scheme consists of four colors that form a rectangle on the color wheel.



4922910



3942407



13371



12365

Sweetspot

The Sweet Spot groups the original color and five complimentary colors.



4922910



6377295



4922955



3155494



11579568



3158064

Same Dimension

The Same Dimension uses a secret algorithm to generate beautiful new colors.



4922910



6363931



4928798



2499106



6684672



15073280

Inverse Universe

The Inverse Universe completely reimagines the original color for something new.



1985355



1794401



1979723



2237990



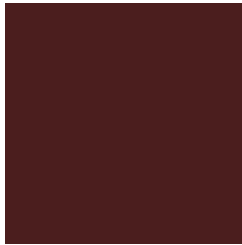
26214



59110

Previews

White Background



This preview shows how the Decimal color 4922910 looks on a white background.

Color Contrast Check

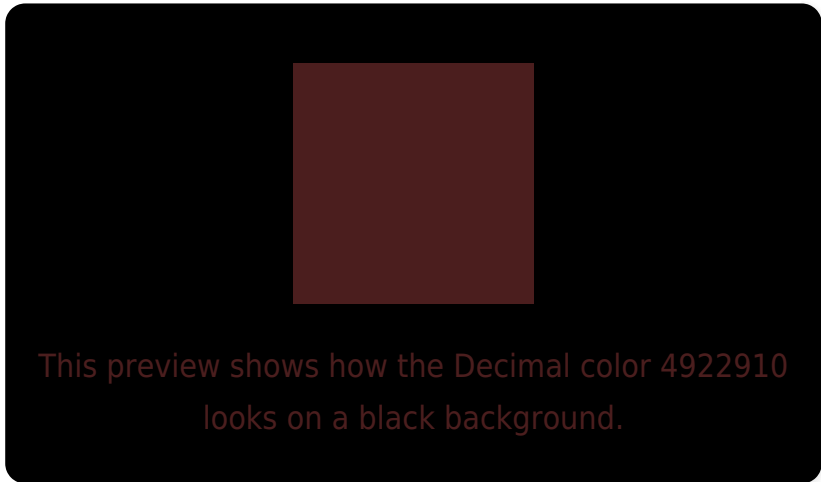
Large Text (above 18pt) WCAG AA ✓ Pass

Any Text WCAG AA ✓ Pass

Large Text (above 18pt) WCAG AAA ✓ Pass

Any Text WCAG AAA ✓ Pass

Black Background



Color Contrast Check

Large Text (above 18pt) WCAG AA × Fail

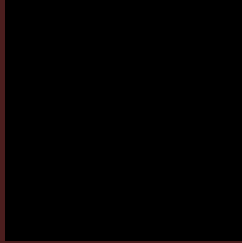
Any Text WCAG AA × Fail

Large Text (above 18pt) WCAG AAA × Fail

Any Text WCAG AAA × Fail

If you want to check with other color combinations, try the [Color Contrast Checker](#).

Decimal 4922910 Background



This preview shows how black text looks on a background with the Decimal color 4922910.



This preview shows how white text looks on a background with the Decimal color 4922910.

Color Blindness Simulation

Color vision deficiency is a very complex topic, and I could not describe the different causes any better than Wikipedia does, so if you want to learn more, you should check out their [article about color blindness](#).

Dichromacy



Original Color
4922910

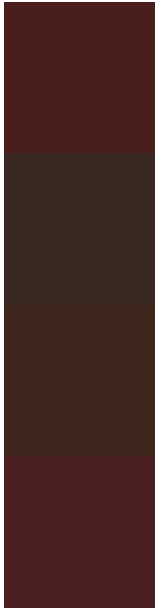
Protanopia
3157284

Deuteranopia
3549980



Tritanopia
4922912

Trichromacy



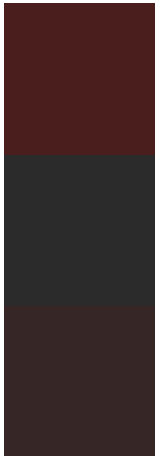
Original Color
4922910

Protanomaly
3811362

Deuteranomaly
4072989

Tritanomaly
4922911

Monochromacy



Original Color
4922910

Achromatopsia
2829099

Achromatomaly
3614246

CSS Examples

Text

The CSS property to change the color of the text to Decimal 4922910 is called "color". The color property can be set on classes, ids or directly on the HTML element.

This example shows how text in the color #4B1E1E looks like.

```
.text, #text, p{  
    color:#4B1E1E  
}
```

If you want to add a text shadow in that color use the text-shadow property, you can generate a text shadow directly with our [CSS Text Shadow Generator](#).

Here you see how black text with a 4 pixel #4B1E1E colored shadow looks like.

```
.shadow{ text-shadow: 4px 4px 2px #4B1E1E
}
```

Border

The CSS property to change the border of an element to Decimal 4922910 is called "border". The border property can be set on classes, ids or directly on the HTML element.

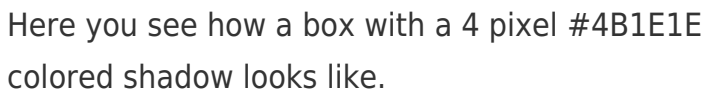
This example shows the color as border, it can be applied via the CSS property "border" or "border-color".

```
.border, #border, table{ border:4px solid
#4B1E1E }
```

If only the border color should be changed use the property `border-color`.

```
.border{ border-color:#4B1E1E }
```

If you want to add a box shadow in that color use:



Here you see how a box with a 4 pixel #4B1E1E colored shadow looks like.

```
.boxshadow{ -moz-box-shadow:4px 4px 4px  
4px #4B1E1E; -webkit-box-shadow:4px 4px  
4px 4px #4B1E1E; box-shadow:4px 4px 4px  
4px #4B1E1E }
```

Background

The CSS property to change the background color of an element to Decimal 4922910 is called "background". The background property can be set on classes, ids or directly on the HTML element.

```
.background, #background, body{  
background:#4B1E1E }
```

If only the background color should be changed can be used:

```
.background{ background-color:#4B1E1E }
```

This example shows the color as background, it is applied via the CSS property "background".

To optimize and compress your CSS code, you can use our [online CSS compressor and optimizer](#) based on csstidy. If you want to create a linear or radial gradient as background or border, check our [CSS Gradient Generator](#).

Hey! You found this booklet interesting? Support Converting Colors with the new Membership Option!

The pro membership hides all ads, plus gives you double the colors in the color bucket, and more awesome pro features!

[Learn more, Memberships starting at \\$2.50/m!](#)

**Follow me
on Twitter!**

@ConvertingColor