

Converting Colors

Decimal(4923680)

Have a look what the booklet for
Decimal(4923680) contains.

Decimal(4923680)	3
<i>Conversions</i>	4
<i>Details</i>	6
<i>Harmonies</i>	11
<i>Previews</i>	23
<i>Color Blindness Simulation</i>	26
<i>CSS Examples</i>	29

Color

Decimal(4923680)

Conversions

Conversions Part 1

Format	Color
Hex	4B2120
RGB	75, 33, 32
RGB Percent	29%, 13%, 13%
CMY	0.7059, 0.8706, 0.8745
CMYK	0.00, 0.56, 0.57, 0.71
HSL	1°, 40%, 21%
HSV	1°, 57%, 29%
XYZ	3.7062, 2.6879, 1.6900
YIQ	45.4440, 25.3530, 8.5930

Conversions

Conversions Part 2

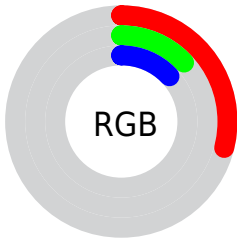
Format	Color
R_{YB}	75, 33, 32
Decimal	4923680
CIE Lab	18.75, 19.78, 10.02
CIE LCh	19, 22.171, 26.872
Yxy	2.6879, 0.4585, 0.3325
Android (android.graphics.Color)	4283113760 (0xFF4B2120)
YUV	45.4440, -6.6279, 25.9206
Hunter-Lab	16.3947, 11.6614, 5.3646

Details

The Decimal color **4923680** is a dark color, and the websafe version is hex **663333**. A complement of this color would be **2116171**, and the grayscale version is **2960685**.

A 20% lighter version of the original color is **8277836**, and **1835009** is the 20% darker color. If you saturate the color by 10%, you get **4921880**, and if you desaturate by 10%, it is **4925479**.

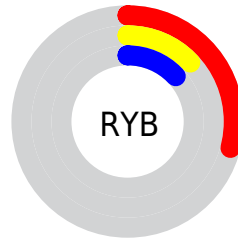
Distribution



Red (29%)

Green (13%)

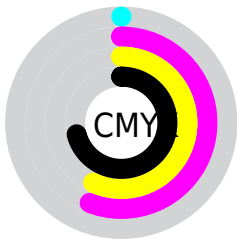
Blue (13%)



Red (29%)

Yellow (13%)

Blue (13%)

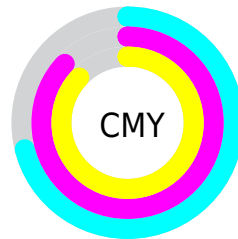


Cyan (0%)

Magenta (56%)

Yellow (57%)

Black (71%)



Cyan (71%)

Magenta (87%)

Yellow (87%)

Brightness & Saturation Gradients

These gradients show how the Decimal color 4923680 changes by changing the brightness by 10 percent. The first figure shows a shift by +10% for each color and the second figure -10%.

Similar to the brightness gradients but the following saturation gradients show a change of the Decimal color 4923680 by changing the saturation by 10% instead.



4923680



4923680

16777215



3345161



8277836



1835009



10053476



0



11894909



13736599



15644081



16765389



16772585



4923680



4923680

■ 4921880

■ 4925479

■ 4919825

■ 4927535

■ 4918025

■ 4929335

■ 4916226

■ 4931134

■ 4915712

■ 4933190

■ 4934989

■ 4936789

■ 4938844

■ 4940644

Harmonies

Analogous

The Analogous color harmony consists of three colors that are next to each other on the color wheel.



4857904



4923680



4466195

Triad

The Triadic color harmony groups three colors that are evenly spaced from another and form a triangle on the color wheel.



4923680



1324059



471118

Complementary

The Complementary color scheme is a pair of colors which are on the opposite of each other on the color wheel.



4923680



2116171

Split Complementary

Split-complementary colors differ from the complementary color scheme. The scheme consists of three colors, the original color and two neighbors of the complement color.



13384



4923680



13611

Square

The Square scheme is like the rectangle color scheme, but the four colors are evenly spaced on the color wheel.



4923680



2633999



13628



2894410

Rectangle

The Rectangle color scheme consists of four colors that form a rectangle on the color wheel.



4923680



4008461



13628



12621

Sweetspot

The Sweet Spot groups the original color and five complimentary colors.



4923680



6377808



4923466



3155751



11579568



3158064

Same Dimension

The Same Dimension uses a secret algorithm to generate beautiful new colors.



4923680



6365214



4929056



2499362



6685184



15074560

Inverse Universe

The Inverse Universe completely reimagines the original color for something new.



2116171



1990497



2110795



2237990



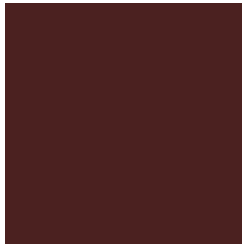
25702



57574

Previews

White Background



This preview shows how the Decimal color 4923680 looks on a white background.

Color Contrast Check

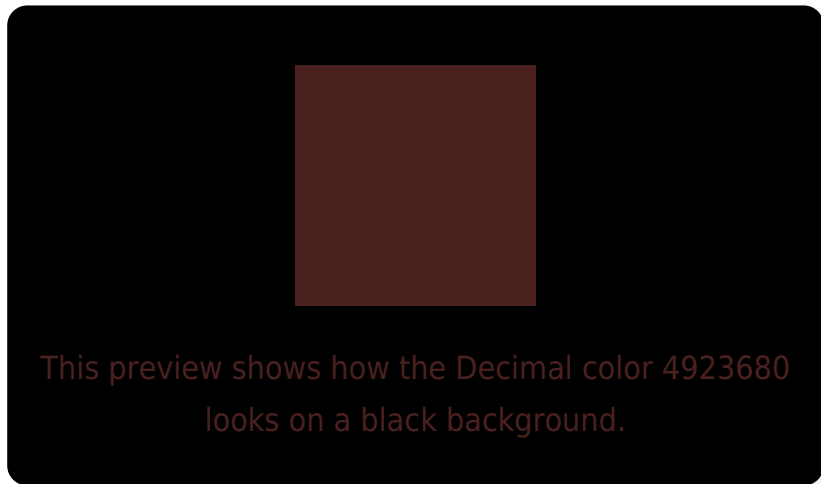
Large Text (above 18pt) WCAG AA ✓ Pass

Any Text WCAG AA ✓ Pass

Large Text (above 18pt) WCAG AAA ✓ Pass

Any Text WCAG AAA ✓ Pass

Black Background



Color Contrast Check

Large Text (above 18pt) WCAG AA × Fail

Any Text WCAG AA × Fail

Large Text (above 18pt) WCAG AAA × Fail

Any Text WCAG AAA × Fail

If you want to check with other color combinations, try the [Color Contrast Checker](#).

Decimal 4923680 Background



This preview shows how black text looks on a background with the Decimal color 4923680.



This preview shows how white text looks on a background with the Decimal color 4923680.

Color Blindness Simulation

Color vision deficiency is a very complex topic, and I could not describe the different causes any better than Wikipedia does, so if you want to learn more, you should check out their [article about color blindness](#).


Dichromacy



Original Color
4923680

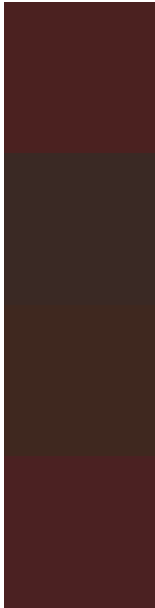
Protanopia
3223078

Deuteranopia
3681310



Tritanopia
4923683

Trichromacy



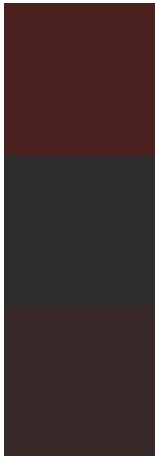
Original Color
4923680

Protanomaly
3811620

Deuteranomaly
4139039

Tritanomaly
4923682

Monochromacy



Original Color
4923680

Achromatopsia
2960685

Achromatomaly
3680552

CSS Examples

Text

The CSS property to change the color of the text to Decimal 4923680 is called "color". The color property can be set on classes, ids or directly on the HTML element.

This example shows how text in the color #4B2120 looks like.

```
.text, #text, p{  
    color:#4B2120  
}
```

If you want to add a text shadow in that color use the text-shadow property, you can generate a text shadow directly with our [CSS Text Shadow Generator](#).

Here you see how black text with a 4 pixel #4B2120 colored shadow looks like.

```
.shadow{ text-shadow: 4px 4px 2px #4B2120
}
```

Border

The CSS property to change the border of an element to Decimal 4923680 is called "border". The border property can be set on classes, ids or directly on the HTML element.

This example shows the color as border, it can be applied via the CSS property "border" or "border-color".

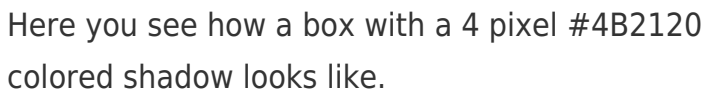
```
.border, #border, table{ border:4px solid
#4B2120 }
```

If only the border color should be changed use the property `border-color`.

```
.border{ border-color:#4B2120 }
```

If you want to add a box shadow in that color use:

Here you see how a box with a 4 pixel #4B2120 colored shadow looks like.

A rectangular box with a dark red border and a dark red shadow. The box is white with a thin dark red border on the top and left sides, and a thicker dark red shadow on the bottom and right sides.

```
.boxshadow{ -moz-box-shadow:4px 4px 4px  
4px #4B2120; -webkit-box-shadow:4px 4px  
4px 4px #4B2120; box-shadow:4px 4px 4px  
4px #4B2120 }
```

Background

The CSS property to change the background color of an element to Decimal 4923680 is called "background". The background property can be set on classes, ids or directly on the HTML element.

```
.background, #background, body{  
background:#4B2120 }
```

If only the background color should be changed can be used:

```
.background{ background-color:#4B2120 }
```

This example shows the color as background, it is applied via the CSS property "background".

To optimize and compress your CSS code, you can use our [online CSS compressor and optimizer](#) based on csstidy. If you want to create a linear or radial gradient as background or border, check our [CSS Gradient Generator](#).

Hey! You found this booklet interesting? Support Converting Colors with the new Membership Option!

The pro membership hides all ads, plus gives you double the colors in the color bucket, and more awesome pro features!

[Learn more, Memberships starting at \\$2.50/m!](#)

**Follow me
on Twitter!**

@ConvertingColor