

Converting Colors

Decimal(4927796)

Have a look what the booklet for
Decimal(4927796) contains.

Decimal(4927796)	3
<i>Conversions</i>	4
<i>Details</i>	6
<i>Harmonies</i>	11
<i>Previews</i>	23
<i>Color Blindness Simulation</i>	26
<i>CSS Examples</i>	29

Color

Decimal(4927796)

Conversions

Conversions Part 1

Format	Color
Hex	4B3134
RGB	75, 49, 52
RGB Percent	29%, 19%, 20%
CMY	0.7059, 0.8078, 0.7961
CMYK	0.00, 0.35, 0.31, 0.71
HSL	353°, 21%, 24%
HSV	353°, 35%, 29%
XYZ	4.6198, 3.9404, 3.7659
YIQ	57.1160, 14.5330, 6.4450

Conversions

Conversions Part 2

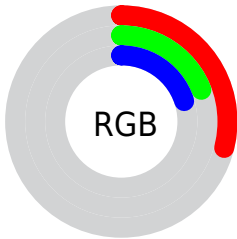
Format	Color
R_{YB}	75, 49, 52
Decimal	4927796
CIE Lab	23.47, 12.33, 2.89
CIE LCh	23, 12.664, 13.215
Yxy	3.9404, 0.3748, 0.3197
Android (android.graphics.Color)	4283117876 (0xFF4B3134)
YUV	57.1160, -2.5222, 15.6843
Hunter-Lab	19.8505, 6.8039, 2.6472

Details

The Decimal color **4927796** is a dark color, and the websafe version is hex **333333**. A complement of this color would be **3230536**, and the grayscale version is **3750201**.

A 20% lighter version of the original color is **8216418**, and **2097926** is the 20% darker color. If you saturate the color by 10%, you get **4925997**, and if you desaturate by 10%, it is **4929851**.

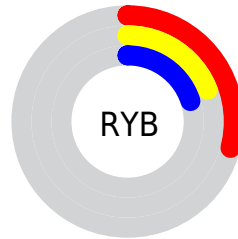
Distribution



Red (29%)

Green (19%)

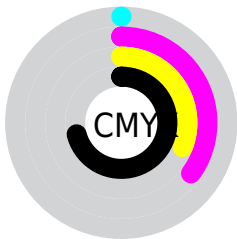
Blue (20%)



Red (29%)

Yellow (19%)

Blue (20%)

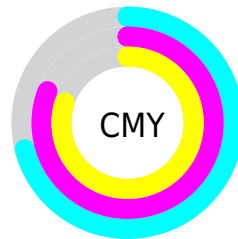


Cyan (0%)

Magenta (35%)

Yellow (31%)

Black (71%)



Cyan (71%)

Magenta (81%)

Yellow (80%)

Brightness & Saturation Gradients

These gradients show how the Decimal color 4927796 changes by changing the brightness by 10 percent. The first figure shows a shift by +10% for each color and the second figure -10%.

Similar to the brightness gradients but the following saturation gradients show a change of the Decimal color 4927796 by changing the saturation by 10% instead.



4927796



4927796

16777215



3415071



8216418



2097926



9926779



0



11702933



13479344



15386827



16770279



4927796



4927796



4925997



4929851

■ 4923943

■ 4931649

■ 4922144

■ 4933704

■ 4920089

■ 4935503

■ 4918291

■ 4937557

■ 4916236

■ 4939356

■ 4915209

■ 4941410

■ 4943209

■ 4945264

Harmonies

Analogous

The Analogous color harmony consists of three colors that are next to each other on the color wheel.



4665918



4927796



4797227

Triad

The Triadic color harmony groups three colors that are evenly spaced from another and form a triangle on the color wheel.



4927796



3160874



2439754

Complementary

The Complementary color scheme is a pair of colors which are on the opposite of each other on the color wheel.



4927796



3230536

Split Complementary

Split-complementary colors differ from the complementary color scheme. The scheme consists of three colors, the original color and two neighbors of the complement color.



1850437



4927796



2440498

Square

The Square scheme is like the rectangle color scheme, but the four colors are evenly spaced on the color wheel.



4927796



3815717



1916220



3290954

Rectangle

The Rectangle color scheme consists of four colors that form a rectangle on the color wheel.



4927796



4600871



1916220



2177865

Sweetspot

The Sweet Spot groups the original color and five complimentary colors.



4927796



6379352



4731211



3156779



11579568



3158064

Same Dimension

The Same Dimension uses a secret algorithm to generate beautiful new colors.



4927796



6371389



4930353



2499107



6684684



15073306

Inverse Universe

The Inverse Universe completely reimagines the original color for something new.



4927796



6371389



3227979



2499107



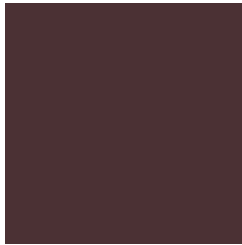
6684684



15073306

Previews

White Background



This preview shows how the Decimal color 4927796 looks on a white background.

Color Contrast Check

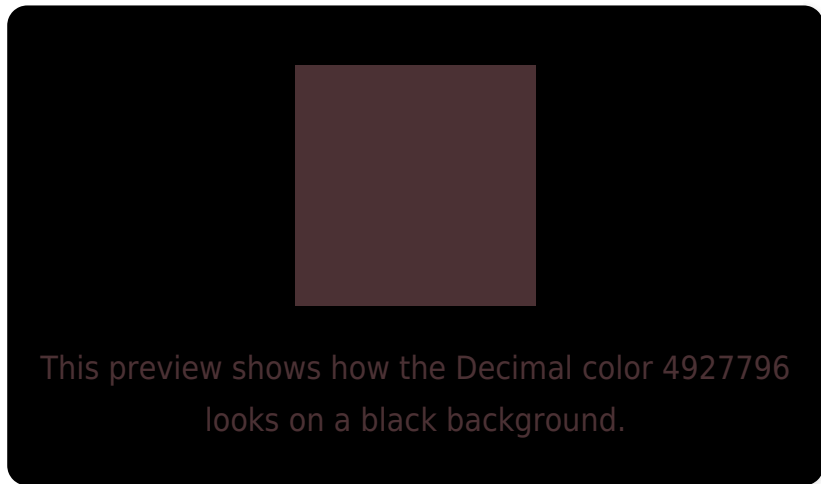
Large Text (above 18pt) WCAG AA ✓ Pass

Any Text WCAG AA ✓ Pass

Large Text (above 18pt) WCAG AAA ✓ Pass

Any Text WCAG AAA ✓ Pass

Black Background



Color Contrast Check

Large Text (above 18pt) WCAG AA × Fail

Any Text WCAG AA × Fail

Large Text (above 18pt) WCAG AAA × Fail

Any Text WCAG AAA × Fail

If you want to check with other color combinations, try the [Color Contrast Checker](#).

Decimal 4927796 Background



This preview shows how black text looks on a background with the Decimal color 4927796.

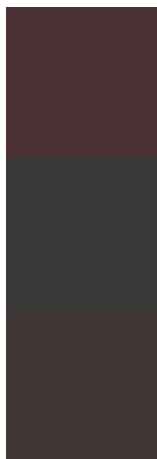


This preview shows how white text looks on a background with the Decimal color 4927796.

Color Blindness Simulation

Color vision deficiency is a very complex topic, and I could not describe the different causes any better than Wikipedia does, so if you want to learn more, you should check out their [article about color blindness](#).

Dichromacy



Original Color
4927796

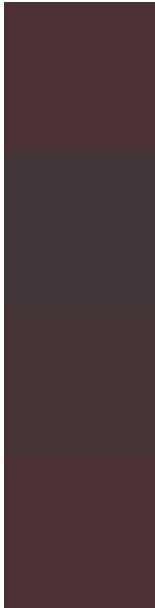
Protanopia
3749944

Deuteranopia
4208179



Tritanopia
4927797

Trichromacy



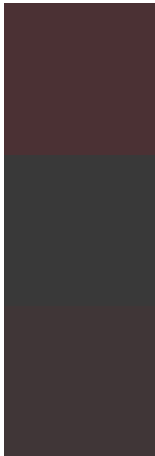
Original Color
4927796

Protanomaly
4207927

Deuteranomaly
4469811

Tritanomaly
4927797

Monochromacy



Original Color
4927796

Achromatopsia
3750201

Achromatomaly
4208183

CSS Examples

Text

The CSS property to change the color of the text to Decimal 4927796 is called "color". The color property can be set on classes, ids or directly on the HTML element.

This example shows how text in the color #4B3134 looks like.

```
.text, #text, p{  
    color:#4B3134  
}
```

If you want to add a text shadow in that color use the text-shadow property, you can generate a text shadow directly with our [CSS Text Shadow Generator](#).

Here you see how black text with a 4 pixel #4B3134 colored shadow looks like.

```
.shadow{ text-shadow: 4px 4px 2px #4B3134
}
```

Border

The CSS property to change the border of an element to Decimal 4927796 is called "border". The border property can be set on classes, ids or directly on the HTML element.

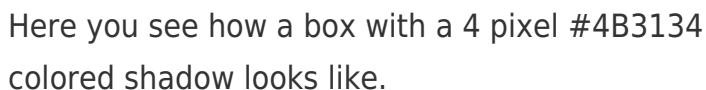
This example shows the color as border, it can be applied via the CSS property "border" or "border-color".

```
.border, #border, table{ border:4px solid
#4B3134 }
```

If only the border color should be changed use the property `border-color`.

```
.border{ border-color:#4B3134 }
```

If you want to add a box shadow in that color use:



Here you see how a box with a 4 pixel #4B3134 colored shadow looks like.

```
.boxshadow{ -moz-box-shadow:4px 4px 4px  
4px #4B3134; -webkit-box-shadow:4px 4px  
4px 4px #4B3134; box-shadow:4px 4px 4px  
4px #4B3134 }
```

Background

The CSS property to change the background color of an element to Decimal 4927796 is called "background". The background property can be set on classes, ids or directly on the HTML element.

```
.background, #background, body{  
background:#4B3134 }
```

If only the background color should be changed can be used:

```
.background{ background-color:#4B3134 }
```

This example shows the color as background, it is applied via the CSS property "background".

To optimize and compress your CSS code, you can use our [online CSS compressor and optimizer](#) based on csstidy. If you want to create a linear or radial gradient as background or border, check our [CSS Gradient Generator](#).

Hey! You found this booklet
interesting? Support Converting
Colors with the new Membership
Option!

The pro membership hides all ads, plus gives you
double the colors in the color bucket, and more
awesome pro features!

[Learn more, Memberships starting at \\$2.50/m!](#)

**Follow me
on Twitter!**

@ConvertingColor