

Converting Colors

Decimal(4987155)

Have a look what the booklet for
Decimal(4987155) contains.

Decimal(4987155)	3
<i>Conversions</i>	4
<i>Details</i>	6
<i>Harmonies</i>	11
<i>Previews</i>	23
<i>Color Blindness Simulation</i>	26
<i>CSS Examples</i>	29

Color

Decimal(4987155)

Conversions

Conversions Part 1

Format	Color
Hex	4C1913
RGB	76, 25, 19
RGB Percent	30%, 10%, 7%
CMY	0.7020, 0.9020, 0.9255
CMYK	0.00, 0.67, 0.75, 0.70
HSL	6°, 60%, 19%
HSV	6°, 75%, 30%
XYZ	3.4457, 2.2788, 0.8743
YIQ	39.5650, 32.3220, 8.9460

Conversions

Conversions Part 2

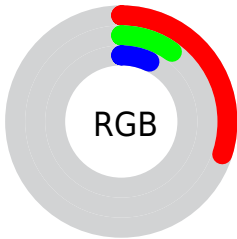
Format	Color
R_{YB}	76, 26, 19
Decimal	4987155
CIE _{Lab}	16.89, 23.73, 16.61
CIE _{LCh}	17, 28.962, 34.994
Yxy	2.2788, 0.5222, 0.3453
Android (android.graphics.Color)	4283177235 (0xFF4C1913)
YUV	39.5650, -10.1385, 31.9535
Hunter-Lab	15.0956, 14.3263, 7.1329

Details

The Decimal color **4987155** is a dark color, and the websafe version is hex **330000**. A complement of this color would be **1263180**, and the grayscale version is **2631720**.

A 20% lighter version of the original color is **8472381**, and **1441792** is the 20% darker color. If you saturate the color by 10%, you get **4985355**, and if you desaturate by 10%, it is **4988955**.

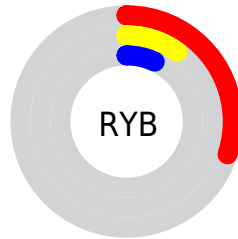
Distribution



Red (30%)

Green (10%)

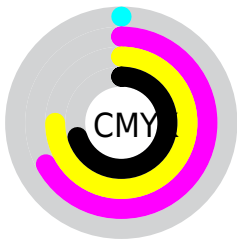
Blue (7%)



Red (30%)

Yellow (10%)

Blue (7%)

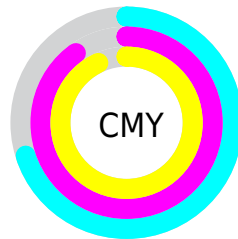


Cyan (0%)

Magenta (67%)

Yellow (75%)

Black (70%)



Cyan (70%)

Magenta (90%)

Yellow (93%)

Brightness & Saturation Gradients

These gradients show how the Decimal color 4987155 changes by changing the brightness by 10 percent. The first figure shows a shift by +10% for each color and the second figure -10%.

Similar to the brightness gradients but the following saturation gradients show a change of the Decimal color 4987155 by changing the saturation by 10% instead.



4987155



4987155



16777203



3343104



8472381



1441792



10248020



0



12089453



13996678



15904160



16763323



16770519



4987155



4987155

■ 4985355

■ 4988955

■ 4983556

■ 4990754

■ 4982784

■ 4992298

■ 4994097

■ 4995897

■ 4997697

■ 4999496

■ 5001040

■ 5002839

Harmonies

Analogous

The Analogous color harmony consists of three colors that are next to each other on the color wheel.



5116967



4987155



4334080

Triad

The Triadic color harmony groups three colors that are evenly spaced from another and form a triangle on the color wheel.



4987155



12823



11091

Complementary

The Complementary color scheme is a pair of colors which are on the opposite of each other on the color wheel.



4987155



1263180

Split Complementary

Split-complementary colors differ from the complementary color scheme. The scheme consists of three colors, the original color and two neighbors of the complement color.



12367



4987155



13101

Square

The Square scheme is like the rectangle color scheme, but the four colors are evenly spaced on the color wheel.



4987155



1847041



13121



3023692

Rectangle

The Rectangle color scheme consists of four colors that form a rectangle on the color wheel.



4987155



3680000



13121



11603

Sweetspot

The Sweet Spot groups the original color and five complimentary colors.



4987155



6508365



4985670



3352101



11776947



3355443

Same Dimension

The Same Dimension uses a secret algorithm to generate beautiful new colors.



4987155



6492938



4994323



2499362



6687488



15079424

Inverse Universe

The Inverse Universe completely reimagines the original color for something new.



1263180



678499



1256012



2237990



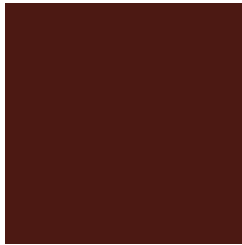
23398



52710

Previews

White Background



This preview shows how the Decimal color 4987155 looks on a white background.

Color Contrast Check

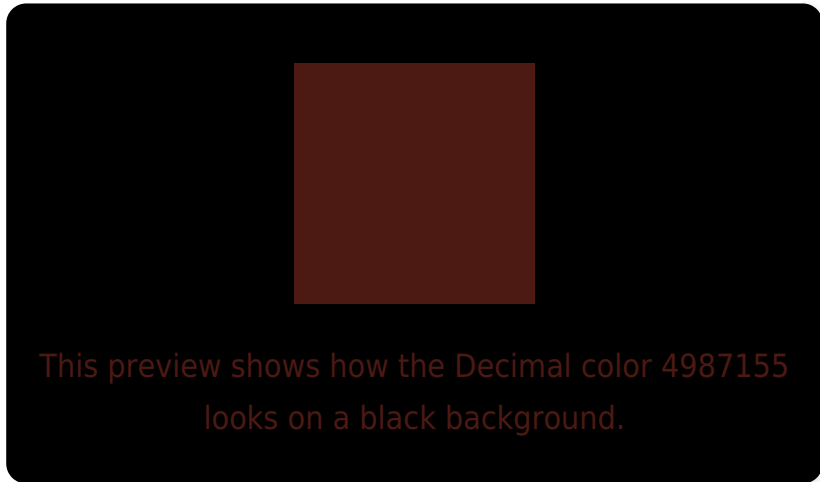
Large Text (above 18pt) WCAG AA ✓ Pass

Any Text WCAG AA ✓ Pass

Large Text (above 18pt) WCAG AAA ✓ Pass

Any Text WCAG AAA ✓ Pass

Black Background



Color Contrast Check

Large Text (above 18pt) WCAG AA × Fail

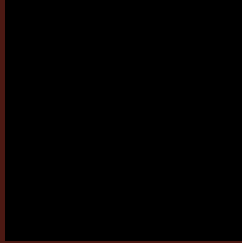
Any Text WCAG AA × Fail

Large Text (above 18pt) WCAG AAA × Fail

Any Text WCAG AAA × Fail

If you want to check with other color combinations, try the [Color Contrast Checker](#).

Decimal 4987155 Background



This preview shows how black text looks on a background with the Decimal color 4987155.

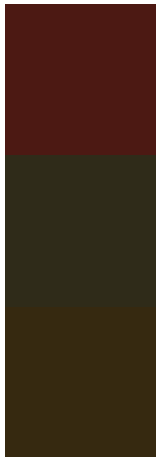


This preview shows how white text looks on a background with the Decimal color 4987155.

Color Blindness Simulation

Color vision deficiency is a very complex topic, and I could not describe the different causes any better than Wikipedia does, so if you want to learn more, you should check out their [article about color blindness](#).

Dichromacy



Original Color
4987155

Protanopia
3091225

Deuteranopia
3549456



Tritanopia
4986905

Trichromacy



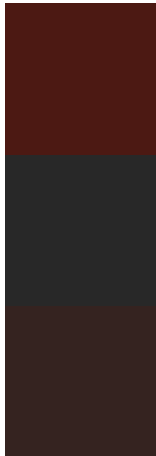
Original Color
4987155

Protanomaly
3810327

Deuteranomaly
4072209

Tritanomaly
4986903

Monochromacy



Original Color
4987155

Achromatopsia
2631720

Achromatomaly
3482400

CSS Examples

Text

The CSS property to change the color of the text to Decimal 4987155 is called "color". The color property can be set on classes, ids or directly on the HTML element.

This example shows how text in the color #4C1913 looks like.

```
.text, #text, p{  
    color:#4C1913  
}
```

If you want to add a text shadow in that color use the text-shadow property, you can generate a text shadow directly with our [CSS Text Shadow Generator](#).

Here you see how black text with a 4 pixel #4C1913 colored shadow looks like.

```
.shadow{ text-shadow: 4px 4px 2px #4C1913
}
```

Border

The CSS property to change the border of an element to Decimal 4987155 is called "border". The border property can be set on classes, ids or directly on the HTML element.

This example shows the color as border, it can be applied via the CSS property "border" or "border-color".

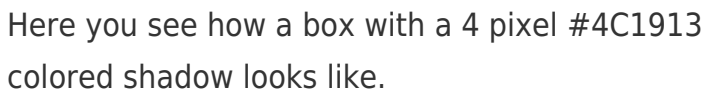
```
.border, #border, table{ border:4px solid
#4C1913 }
```

If only the border color should be changed use the property `border-color`.

```
.border{ border-color:#4C1913 }
```

If you want to add a box shadow in that color use:

Here you see how a box with a 4 pixel #4C1913 colored shadow looks like.

A rectangular box with a dark red border and a dark red shadow. The box is white with a thin dark red border. Below and to the right of the box is a dark red shadow, creating a 3D effect. The shadow is rectangular and matches the color of the border.

```
.boxshadow{ -moz-box-shadow:4px 4px 4px  
4px #4C1913; -webkit-box-shadow:4px 4px  
4px 4px #4C1913; box-shadow:4px 4px 4px  
4px #4C1913 }
```

Background

The CSS property to change the background color of an element to Decimal 4987155 is called "background". The background property can be set on classes, ids or directly on the HTML element.

```
.background, #background, body{  
background:#4C1913 }
```

If only the background color should be changed can be used:

```
.background{ background-color:#4C1913 }
```

This example shows the color as background, it is applied via the CSS property "background".

To optimize and compress your CSS code, you can use our [online CSS compressor and optimizer](#) based on csstidy. If you want to create a linear or radial gradient as background or border, check our [CSS Gradient Generator](#).

Hey! You found this booklet
interesting? Support Converting
Colors with the new Membership
Option!

The pro membership hides all ads, plus gives you
double the colors in the color bucket, and more
awesome pro features!

[Learn more, Memberships starting at \\$2.50/m!](#)

**Follow me
on Twitter!**

@ConvertingColor