

Converting Colors

Decimal(4990246)

Have a look what the booklet for
Decimal(4990246) contains.

Decimal(4990246)	3
<i>Conversions</i>	4
<i>Details</i>	6
<i>Harmonies</i>	11
<i>Previews</i>	23
<i>Color Blindness Simulation</i>	26
<i>CSS Examples</i>	29

Color

Decimal(4990246)

Conversions

Conversions Part 1

Format	Color
Hex	4C2526
RGB	76, 37, 38
RGB Percent	30%, 15%, 15%
CMY	0.7020, 0.8549, 0.8510
CMYK	0.00, 0.51, 0.50, 0.70
HSL	358°, 35%, 22%
HSV	358°, 51%, 30%
XYZ	3.9919, 2.9996, 2.2023
YIQ	48.7750, 22.9230, 8.5790

Conversions

Conversions Part 2

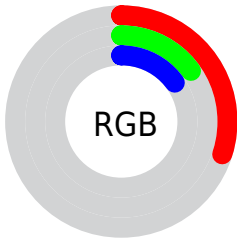
Format	Color
RYB	76, 37, 38
Decimal	4990246
CIELab	20.04, 18.45, 7.65
CIElCh	20, 19.969, 22.523
Yxy	2.9996, 0.4342, 0.3263
Android (android.graphics.Color)	4283180326 (0xFF4C2526)
YUV	48.7750, -5.3121, 23.8763
Hunter-Lab	17.3193, 10.8336, 4.5842

Details

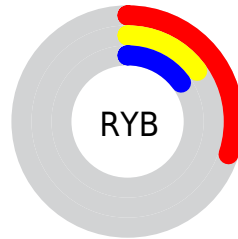
The Decimal color **4990246** is a dark color, and the websafe version is hex **663333**. A complement of this color would be **2444363**, and the grayscale version is **3223857**.

A 20% lighter version of the original color is **8344403**, and **2097153** is the 20% darker color. If you saturate the color by 10%, you get **4988191**, and if you desaturate by 10%, it is **4992301**.

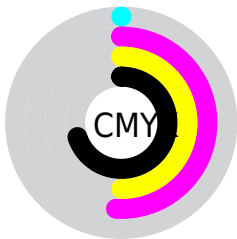
Distribution



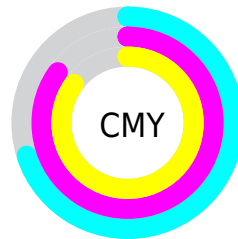
- Red (30%)
- Green (15%)
- Blue (15%)



- Red (30%)
- Yellow (15%)
- Blue (15%)



- Cyan (0%)
- Magenta (51%)
- Yellow (50%)
- Black (70%)



- Cyan (70%)
- Magenta (85%)
- Yellow (85%)

Brightness & Saturation Gradients

These gradients show how the Decimal color 4990246 changes by changing the brightness by 10 percent. The first figure shows a shift by +10% for each color and the second figure -10%.

Similar to the brightness gradients but the following saturation gradients show a change of the Decimal color 4990246 by changing the saturation by 10% instead.



4990246



4990246

16777215



3411985



8344403



2097153



10120043



0



11896196



13737886



15645369



16766677



16773873



4990246



4990246

■ 4988191

■ 4992301

■ 4986391

■ 4994101

■ 4984336

■ 4996156

■ 4982536

■ 4997956

■ 4980738

■ 5000011

■ 5002066

■ 5003866

■ 5005921

■ 5007721

Harmonies

Analogous

The Analogous color harmony consists of three colors that are next to each other on the color wheel.



4859189



4990246



4663578

Triad

The Triadic color harmony groups three colors that are evenly spaced from another and form a triangle on the color wheel.



4990246



1914398



930637

Complementary

The Complementary color scheme is a pair of colors which are on the opposite of each other on the color wheel.



4990246



2444363

Split Complementary

Split-complementary colors differ from the complementary color scheme. The scheme consists of three colors, the original color and two neighbors of the complement color.



13895



4990246



210988

Square

The Square scheme is like the rectangle color scheme, but the four colors are evenly spaced on the color wheel.



4990246



3027733



14395



2895435

Rectangle

The Rectangle color scheme consists of four colors that form a rectangle on the color wheel.



4990246



4205844



14395



13388

Sweetspot

The Sweet Spot groups the original color and five complimentary colors.



4990246



6509909



4924748



3353130



11776947



3355443

Same Dimension

The Same Dimension uses a secret algorithm to generate beautiful new colors.



4990246



6497831



4994853



2499107



6684675



15073286

Inverse Universe

The Inverse Universe completely reimagines the original color for something new.



4990246



6497831



2439756



2499107



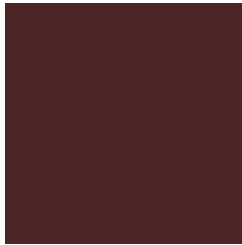
6684675



15073286

Previews

White Background



This preview shows how the Decimal color 4990246 looks on a white background.

Color Contrast Check

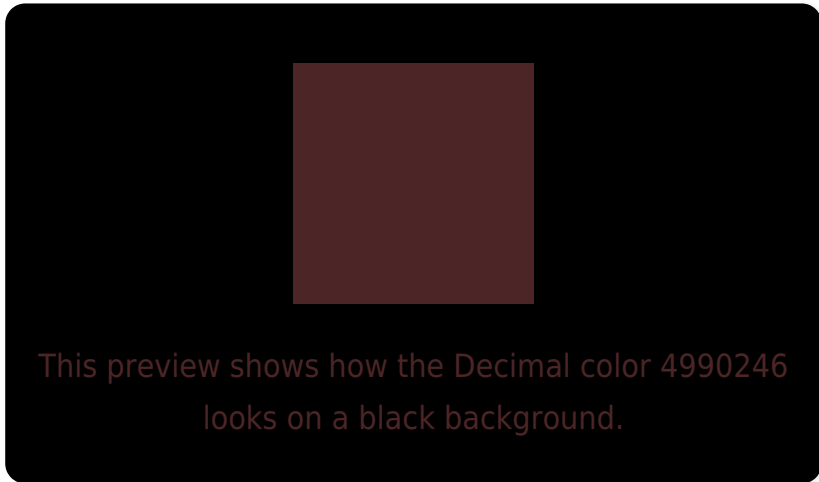
Large Text (above 18pt) WCAG AA ✓ Pass

Any Text WCAG AA ✓ Pass

Large Text (above 18pt) WCAG AAA ✓ Pass

Any Text WCAG AAA ✓ Pass

Black Background



Color Contrast Check

Large Text (above 18pt) WCAG AA × Fail

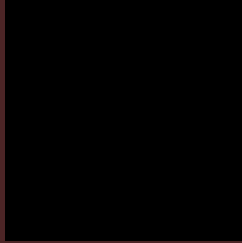
Any Text WCAG AA × Fail

Large Text (above 18pt) WCAG AAA × Fail

Any Text WCAG AAA × Fail

If you want to check with other color combinations, try the [Color Contrast Checker](#).

Decimal 4990246 Background



This preview shows how black text looks on a background with the Decimal color 4990246.



This preview shows how white text looks on a background with the Decimal color 4990246.

Color Blindness Simulation

Color vision deficiency is a very complex topic, and I could not describe the different causes any better than Wikipedia does, so if you want to learn more, you should check out their [article about color blindness](#).

Dichromacy



Original Color
4990246

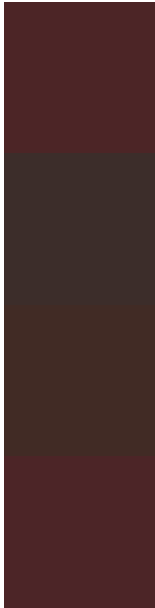
Protanopia
3354924

Deuteranopia
3813156



Tritanopia
4990247

Trichromacy



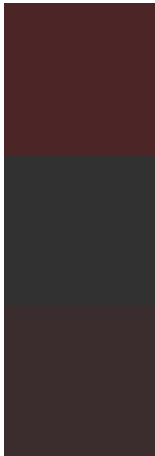
Original Color
4990246

Protanomaly
3943722

Deuteranomaly
4270885

Tritanomaly
4990247

Monochromacy



Original Color
4990246

Achromatopsia
3223857

Achromatomaly
3878189

CSS Examples

Text

The CSS property to change the color of the text to Decimal 4990246 is called "color". The color property can be set on classes, ids or directly on the HTML element.

This example shows how text in the color #4C2526 looks like.

```
.text, #text, p{  
  color:#4C2526  
}
```

If you want to add a text shadow in that color use the text-shadow property, you can generate a text shadow directly with our [CSS Text Shadow Generator](#).

Here you see how black text with a 4 pixel #4C2526 colored shadow looks like.

```
.shadow{ text-shadow: 4px 4px 2px #4C2526
}
```

Border

The CSS property to change the border of an element to Decimal 4990246 is called "border". The border property can be set on classes, ids or directly on the HTML element.

This example shows the color as border, it can be applied via the CSS property "border" or "border-color".

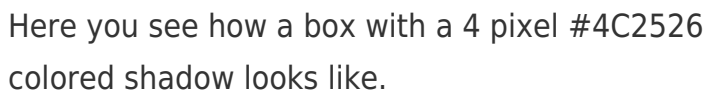
```
.border, #border, table{ border:4px solid
#4C2526 }
```

If only the border color should be changed use the property `border-color`.

```
.border{ border-color:#4C2526 }
```

If you want to add a box shadow in that color use:

Here you see how a box with a 4 pixel #4C2526 colored shadow looks like.

A rectangular box with a dark red border and a dark red shadow. The shadow is cast to the right and bottom of the box, creating a 3D effect. The text inside the box is black and reads: "Here you see how a box with a 4 pixel #4C2526 colored shadow looks like."

```
.boxshadow{ -moz-box-shadow:4px 4px 4px  
4px #4C2526; -webkit-box-shadow:4px 4px  
4px 4px #4C2526; box-shadow:4px 4px 4px  
4px #4C2526 }
```

Background

The CSS property to change the background color of an element to Decimal 4990246 is called "background". The background property can be set on classes, ids or directly on the HTML element.

```
.background, #background, body{  
background:#4C2526 }
```

If only the background color should be changed can be used:

```
.background{ background-color:#4C2526 }
```

This example shows the color as background, it is applied via the CSS property "background".

To optimize and compress your CSS code, you can use our [online CSS compressor and optimizer](#) based on csstidy. If you want to create a linear or radial gradient as background or border, check our [CSS Gradient Generator](#).

Hey! You found this booklet interesting? Support Converting Colors with the new Membership Option!

The pro membership hides all ads, plus gives you double the colors in the color bucket, and more awesome pro features!

[Learn more, Memberships starting at \\$2.50/m!](#)

**Follow me
on Twitter!**

@ConvertingColor