

# Converting Colors

Decimal(4992300)

Have a look what the booklet for  
Decimal(4992300) contains.

<b>Decimal(4992300)</b> .....	3
<b><i>Conversions</i></b> .....	4
<b><i>Details</i></b> .....	6
<b><i>Harmonies</i></b> .....	11
<b><i>Previews</i></b> .....	23
<b><i>Color Blindness Simulation</i></b> .....	26
<b><i>CSS Examples</i></b> .....	29

**Color**

**Decimal(4992300)**

# Conversions

## Conversions Part 1

Format	Color
Hex	4C2D2C
RGB	76, 45, 44
RGB Percent	30%, 18%, 17%
CMY	0.7020, 0.8235, 0.8275
CMYK	0.00, 0.41, 0.42, 0.70
HSL	2°, 27%, 24%
HSV	2°, 42%, 30%
XYZ	4.3735, 3.5951, 2.8463
YIQ	54.1550, 18.7970, 6.2610

# Conversions

## Conversions Part 2

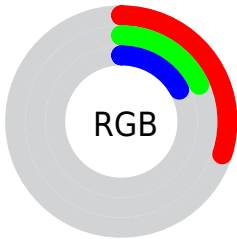
<b>Format</b>	<b>Color</b>
<b>RYB</b>	76, 45, 44
Decimal	4992300
CIELab	22.29, 14.15, 6.65
CIElCh	22, 15.635, 25.180
Yxy	3.5951, 0.4044, 0.3324
Android (android.graphics.Color)	4283182380 (0xFF4C2D2C)
YUV	54.1550, -5.0064, 19.1581
Hunter-Lab	18.9608, 7.9914, 4.3723

# Details

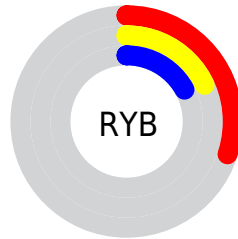
The Decimal color **4992300** is a dark color, and the websafe version is hex **663333**. A complement of this color would be **2902860**, and the grayscale version is **3552822**.

A 20% lighter version of the original color is **8280921**, and **2162688** is the 20% darker color. If you saturate the color by 10%, you get **4990500**, and if you desaturate by 10%, it is **4994100**.

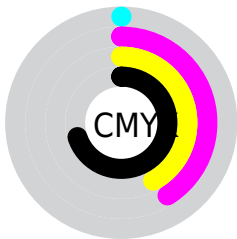
# Distribution



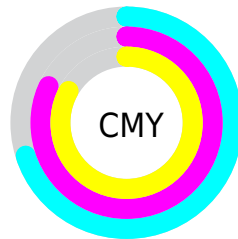
- Red (30%)
- Green (18%)
- Blue (17%)



- Red (30%)
- Yellow (18%)
- Blue (17%)



- Cyan (0%)
- Magenta (41%)
- Yellow (42%)
- Black (70%)



- Cyan (70%)
- Magenta (82%)
- Yellow (83%)

# Brightness & Saturation Gradients

These gradients show how the Decimal color 4992300 changes by changing the brightness by 10 percent. The first figure shows a shift by +10% for each color and the second figure -10%.

Similar to the brightness gradients but the following saturation gradients show a change of the Decimal color 4992300 by changing the saturation by 10% instead.



■ 4992300

■ 4992300

16777215

■ 3414040

■ 8280921

■ 2162688

■ 10056818

■ 0

■ 11832715

■ 13674662

■ 15516609

■ 16768989

■ 16776441

■ 4992300

■ 4992300

■ 4990500

■ 4994100

■ 4988445

■ 4996155

■ 4986645

■ 4997955

■ 4984846

■ 4999754

■ 4982790

■ 5001810

■ 4981248

■ 5003610

■ 5005665

■ 5007465

■ 5009264

# Harmonies

## Analogous

The Analogous color harmony consists of three colors that are next to each other on the color wheel.



4861240



4992300



4730915

# Triad

The Triadic color harmony groups three colors that are evenly spaced from another and form a triangle on the color wheel.



4992300



2505256



2242380

# Complementary

The Complementary color scheme is a pair of colors which are on the opposite of each other on the color wheel.



4992300



2902860

# Split Complementary

Split-complementary colors differ from the complementary color scheme. The scheme consists of three colors, the original color and two neighbors of the complement color.



1063496



4992300



1522483

# Square

The Square scheme is like the rectangle color scheme, but the four colors are evenly spaced on the color wheel.



4992300



3356704



736063



3421002

# Rectangle

The Rectangle color scheme consists of four colors that form a rectangle on the color wheel.



4992300



4338463



736063



1849419



# Sweetspot

The Sweet Spot groups the original color and five complimentary colors.



4992300



6510423



4992075



3353387



11776947



3355443



# Same Dimension

The Same Dimension uses a secret algorithm to generate beautiful new colors.



4992300



6500913



4996396



2499362



6685440



15075072



# Inverse Universe

The Inverse Universe completely reimagines the original color for something new.



2902860



3236451



2898764



2237990



25446

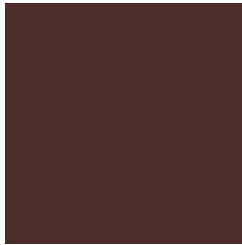


57062



# Previews

## White Background



This preview shows how the Decimal color 4992300 looks on a white background.

## Color Contrast Check

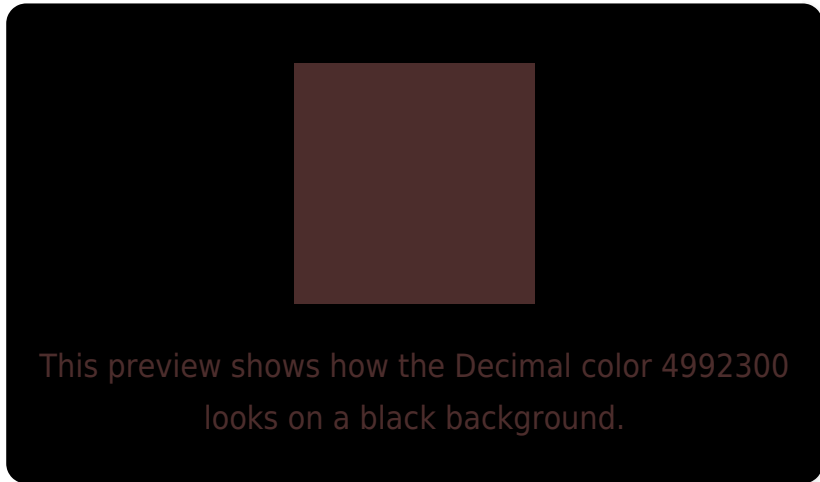
Large Text (above 18pt) WCAG AA ✓ Pass

Any Text WCAG AA ✓ Pass

Large Text (above 18pt) WCAG AAA ✓ Pass

Any Text WCAG AAA ✓ Pass

# Black Background



## Color Contrast Check

Large Text (above 18pt) WCAG AA × Fail

Any Text WCAG AA × Fail

Large Text (above 18pt) WCAG AAA × Fail

Any Text WCAG AAA × Fail

If you want to check with other color combinations, try the [Color Contrast Checker](#).



## Decimal 4992300 Background



This preview shows how black text looks on a background with the Decimal color 4992300.

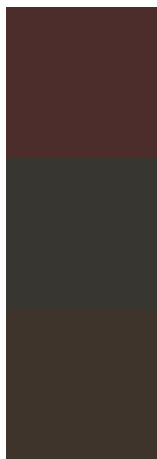


This preview shows how white text looks on a background with the Decimal color 4992300.

# Color Blindness Simulation

Color vision deficiency is a very complex topic, and I could not describe the different causes any better than Wikipedia does, so if you want to learn more, you should check out their [article about color blindness](#).

## Dichromacy



**Original Color**

4992300

**Protanopia**

3683888

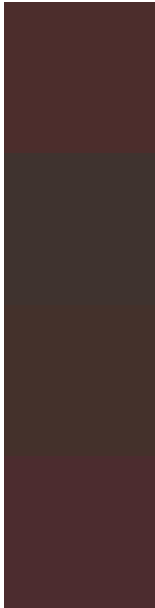
**Deuteranopia**

4142123



**Tritanopia**  
4992048

# Trichromacy



**Original Color**

4992300

**Protanomaly**

4141871

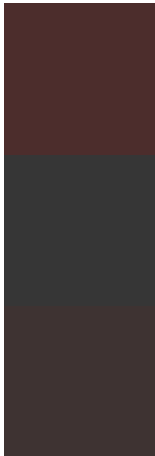
**Deuteranomaly**

4469035

**Tritanomaly**

4992047

# Monochromacy



**Original Color**

4992300

**Achromatopsia**

3552822

**Achromatomaly**

4076338

# CSS Examples

## Text

The CSS property to change the color of the text to Decimal 4992300 is called "color". The color property can be set on classes, ids or directly on the HTML element.

This example shows how text in the color #4C2D2C looks like.

```
.text, #text, p{  
    color:#4C2D2C  
}
```

If you want to add a text shadow in that color use the text-shadow property, you can generate a text shadow directly with our [CSS Text Shadow Generator](#).

Here you see how black text with a 4 pixel #4C2D2C colored shadow looks like.

```
.shadow{ text-shadow: 4px 4px 2px #4C2D2C
}
```

## Border

The CSS property to change the border of an element to Decimal 4992300 is called "border". The border property can be set on classes, ids or directly on the HTML element.

This example shows the color as border, it can be applied via the CSS property "border" or "border-color".

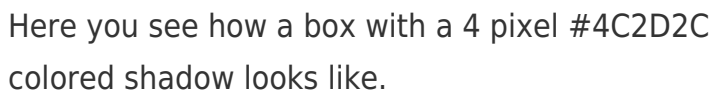
```
.border, #border, table{ border:4px solid
#4C2D2C }
```

If only the border color should be changed use the property `border-color`.

```
.border{ border-color:#4C2D2C }
```

If you want to add a box shadow in that color use:

Here you see how a box with a 4 pixel #4C2D2C colored shadow looks like.

A rectangular box with a dark red border and a dark red shadow. The box is white with a thin dark red border on the top and left sides, and a thicker dark red shadow on the bottom and right sides.

```
.boxshadow{ -moz-box-shadow:4px 4px 4px  
4px #4C2D2C; -webkit-box-shadow:4px 4px  
4px 4px #4C2D2C; box-shadow:4px 4px 4px  
4px #4C2D2C }
```

# Background

The CSS property to change the background color of an element to Decimal 4992300 is called "background". The background property can be set on classes, ids or directly on the HTML element.

```
.background, #background, body{  
background:#4C2D2C }
```

If only the background color should be changed can be used:

```
.background{ background-color:#4C2D2C }
```

This example shows the color as background, it is applied via the CSS property "background".

To optimize and compress your CSS code, you can use our [online CSS compressor and optimizer](#) based on csstidy. If you want to create a linear or radial gradient as background or border, check our [CSS Gradient Generator](#).



Hey! You found this booklet interesting? Support Converting Colors with the new Membership Option!

The pro membership hides all ads, plus gives you double the colors in the color bucket, and more awesome pro features!

**[Learn more, Memberships starting at \\$2.50/m!](#)**

**Follow me  
on Twitter!**

@ConvertingColor