

Converting Colors

Decimal(4994357)

Have a look what the booklet for
Decimal(4994357) contains.

Decimal(4994357)	3
<i>Conversions</i>	4
<i>Details</i>	6
<i>Harmonies</i>	11
<i>Previews</i>	23
<i>Color Blindness Simulation</i>	26
<i>CSS Examples</i>	29

Color

Decimal(4994357)

Conversions

Conversions Part 1

Format	Color
Hex	4C3535
RGB	76, 53, 53
RGB Percent	30%, 21%, 21%
CMY	0.7020, 0.7922, 0.7922
CMYK	0.00, 0.30, 0.30, 0.70
HSL	0°, 18%, 25%
HSV	0°, 30%, 30%
XYZ	4.8962, 4.3397, 3.9478
YIQ	59.8770, 13.7080, 4.8760

Conversions

Conversions Part 2

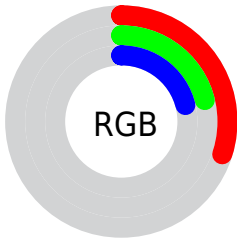
Format	Color
R_{YB}	76, 53, 53
Decimal	4994357
CIE _{Lab}	24.76, 10.33, 4.09
CIE _{LCh}	25, 11.113, 21.583
Yxy	4.3397, 0.3714, 0.3292
Android (android.graphics.Color)	4283184437 (0xFF4C3535)
YUV	59.8770, -3.3904, 14.1399
Hunter-Lab	20.8321, 5.4971, 3.3468

Details

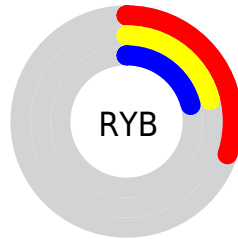
The Decimal color **4994357** is a dark color, and the websafe version is hex **333333**. A complement of this color would be **3492940**, and the grayscale version is **3947580**.

A 20% lighter version of the original color is **8283235**, and **2165000** is the 20% darker color. If you saturate the color by 10%, you get **4992301**, and if you desaturate by 10%, it is **4996413**.

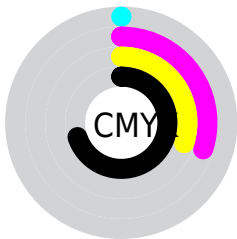
Distribution



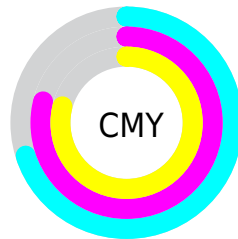
- Red (30%)
- Green (21%)
- Blue (21%)



- Red (30%)
- Yellow (21%)
- Blue (21%)



- Cyan (0%)
- Magenta (30%)
- Yellow (30%)
- Black (70%)



- Cyan (70%)
- Magenta (79%)
- Yellow (79%)

Brightness & Saturation Gradients

These gradients show how the Decimal color 4994357 changes by changing the brightness by 10 percent. The first figure shows a shift by +10% for each color and the second figure -10%.

Similar to the brightness gradients but the following saturation gradients show a change of the Decimal color 4994357 by changing the saturation by 10% instead.



4994357



4994357

16777215



3481632



8283235



2165000



9993596



0



11769750



13545905



15453644



16771560



4994357



4994357



4992301



4996413

■ 4990502

■ 4998212

■ 4988446

■ 5000268

■ 4986647

■ 5002067

■ 4984591

■ 5004123

■ 4982535

■ 5006179

■ 4980736

■ 5007978

■ 5010034

■ 5011833

Harmonies

Analogous

The Analogous color harmony consists of three colors that are next to each other on the color wheel.



4863293



4994357



4798254

Triad

The Triadic color harmony groups three colors that are evenly spaced from another and form a triangle on the color wheel.



4994357



3227184



3030091

Complementary

The Complementary color scheme is a pair of colors which are on the opposite of each other on the color wheel.



4994357



3492940

Split Complementary

Split-complementary colors differ from the complementary color scheme. The scheme consists of three colors, the original color and two neighbors of the complement color.



2440776



4994357



2637624

Square

The Square scheme is like the rectangle color scheme, but the four colors are evenly spaced on the color wheel.



4994357



3882027



2309953



3750218

Rectangle

The Rectangle color scheme consists of four colors that form a rectangle on the color wheel.



4994357



4601899



2309953



2768202

Sweetspot

The Sweet Spot groups the original color and five complimentary colors.



4994357



6511194



4994380



3353901



11776947



3355443

Same Dimension

The Same Dimension uses a secret algorithm to generate beautiful new colors.



4994357



6504512



4997429



2499106



6684672



15073280

Inverse Universe

The Inverse Universe completely reimagines the original color for something new.



3492940



4219747



3490124



2237990



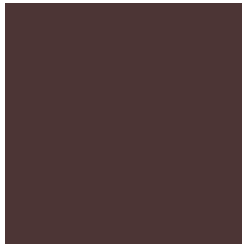
26214



59110

Previews

White Background



This preview shows how the Decimal color 4994357 looks on a white background.

Color Contrast Check

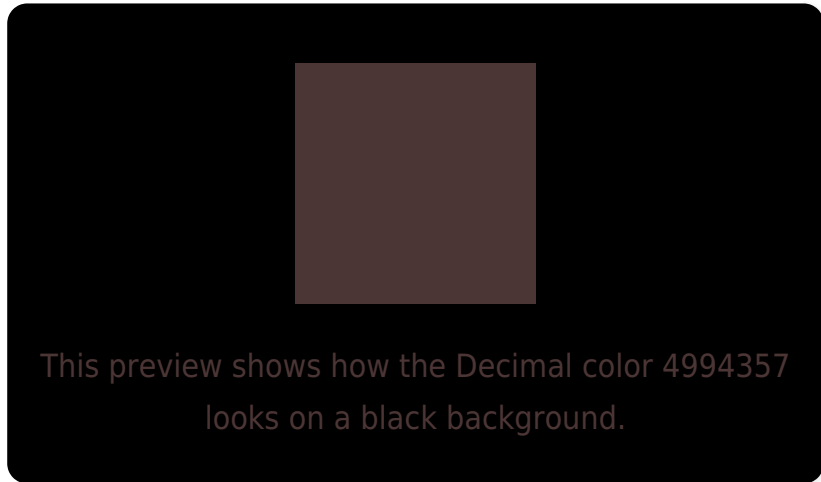
Large Text (above 18pt) WCAG AA ✓ Pass

Any Text WCAG AA ✓ Pass

Large Text (above 18pt) WCAG AAA ✓ Pass

Any Text WCAG AAA ✓ Pass

Black Background



Color Contrast Check

Large Text (above 18pt) WCAG AA × Fail

Any Text WCAG AA × Fail

Large Text (above 18pt) WCAG AAA × Fail

Any Text WCAG AAA × Fail

If you want to check with other color combinations, try the [Color Contrast Checker](#).

Decimal 4994357 Background



This preview shows how black text looks on a background with the Decimal color 4994357.

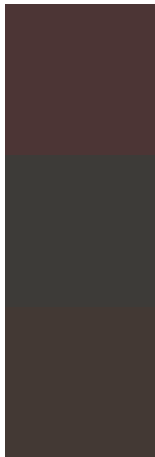


This preview shows how white text looks on a background with the Decimal color 4994357.

Color Blindness Simulation

Color vision deficiency is a very complex topic, and I could not describe the different causes any better than Wikipedia does, so if you want to learn more, you should check out their [article about color blindness](#).

Dichromacy



Original Color
4994357

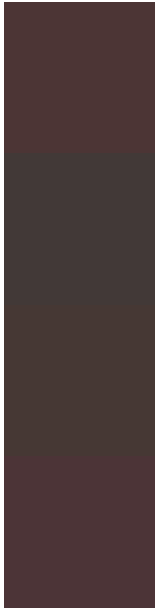
Protanopia
4012856

Deuteranopia
4405556



Tritanopia
4994104

Trichromacy



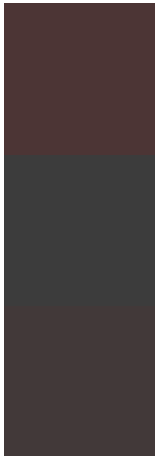
Original Color
4994357

Protanomaly
4340023

Deuteranomaly
4601908

Tritanomaly
4994103

Monochromacy



Original Color
4994357

Achromatopsia
3947580

Achromatomaly
4340025

CSS Examples

Text

The CSS property to change the color of the text to Decimal 4994357 is called "color". The color property can be set on classes, ids or directly on the HTML element.

This example shows how text in the color #4C3535 looks like.

```
.text, #text, p{  
    color:#4C3535  
}
```

If you want to add a text shadow in that color use the text-shadow property, you can generate a text shadow directly with our [CSS Text Shadow Generator](#).

Here you see how black text with a 4 pixel #4C3535 colored shadow looks like.

```
.shadow{ text-shadow: 4px 4px 2px #4C3535
}
```

Border

The CSS property to change the border of an element to Decimal 4994357 is called "border". The border property can be set on classes, ids or directly on the HTML element.

This example shows the color as border, it can be applied via the CSS property "border" or "border-color".

```
.border, #border, table{ border:4px solid
#4C3535 }
```

If only the border color should be changed use the property `border-color`.

```
.border{ border-color:#4C3535 }
```

If you want to add a box shadow in that color use:

Here you see how a box with a 4 pixel #4C3535 colored shadow looks like.

```
.boxshadow{ -moz-box-shadow:4px 4px 4px  
4px #4C3535; -webkit-box-shadow:4px 4px  
4px 4px #4C3535; box-shadow:4px 4px 4px  
4px #4C3535 }
```

Background

The CSS property to change the background color of an element to Decimal 4994357 is called "background". The background property can be set on classes, ids or directly on the HTML element.

```
.background, #background, body{  
background:#4C3535 }
```

If only the background color should be changed can be used:

```
.background{ background-color:#4C3535 }
```

This example shows the color as background, it is applied via the CSS property "background".

To optimize and compress your CSS code, you can use our [online CSS compressor and optimizer](#) based on csstidy. If you want to create a linear or radial gradient as background or border, check our [CSS Gradient Generator](#).

Hey! You found this booklet interesting? Support Converting Colors with the new Membership Option!

The pro membership hides all ads, plus gives you double the colors in the color bucket, and more awesome pro features!

[Learn more, Memberships starting at \\$2.50/m!](#)

**Follow me
on Twitter!**

@ConvertingColor