

Converting Colors

Decimal(5059639)

Have a look what the booklet for
Decimal(5059639) contains.

Decimal(5059639)	3
<i>Conversions</i>	4
<i>Details</i>	6
<i>Harmonies</i>	11
<i>Previews</i>	23
<i>Color Blindness Simulation</i>	26
<i>CSS Examples</i>	29

Color

Decimal(5059639)

Conversions

Conversions Part 1

Format	Color
Hex	4D3437
RGB	77, 52, 55
RGB Percent	30%, 20%, 22%
CMY	0.6980, 0.7961, 0.7843
CMYK	0.00, 0.32, 0.29, 0.70
HSL	353°, 19%, 25%
HSV	353°, 32%, 30%
XYZ	4.9781, 4.3096, 4.1839
YIQ	59.8170, 13.9370, 6.2330

Conversions

Conversions Part 2

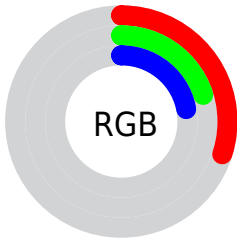
Format	Color
R_{YB}	77, 52, 55
Decimal	5059639
CIE _{Lab}	24.67, 11.77, 2.63
CIE _{LCh}	25, 12.064, 12.594
Yxy	4.3096, 0.3695, 0.3199
Android (android.graphics.Color)	4283249719 (0xFF4D3437)
YUV	59.8170, -2.3748, 15.0695
Hunter-Lab	20.7596, 6.4751, 2.5824

Details

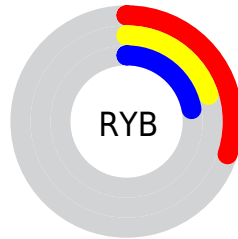
The Decimal color **5059639** is a dark color, and the websafe version is hex **333333**. A complement of this color would be **3427658**, and the grayscale version is **3947580**.

A 20% lighter version of the original color is **8348518**, and **2164747** is the 20% darker color. If you saturate the color by 10%, you get **5057584**, and if you desaturate by 10%, it is **5061694**.

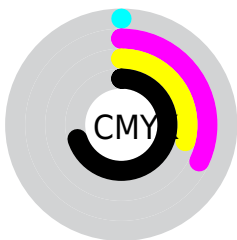
Distribution



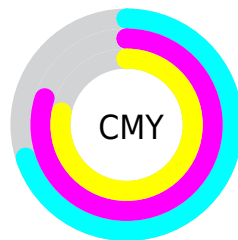
- Red (30%)
- Green (20%)
- Blue (22%)



- Red (30%)
- Yellow (20%)
- Blue (22%)



- Cyan (0%)
- Magenta (32%)
- Yellow (29%)
- Black (70%)



- Cyan (70%)
- Magenta (80%)
- Yellow (78%)

Brightness & Saturation Gradients

These gradients show how the Decimal color 5059639 changes by changing the brightness by 10 percent. The first figure shows a shift by +10% for each color and the second figure -10%.

Similar to the brightness gradients but the following saturation gradients show a change of the Decimal color 5059639 by changing the saturation by 10% instead.

■ 5059639

■ 5059639

16777215

■ 3546914

■ 8348518

■ 2164747

■ 10058879

■ 0

■ 11835033

■ 13676723

■ 15518927

■ 16771307

■ 5059639

■ 5059639

■ 5057584

■ 5061694

■ 5055785

■ 5063493

■ 5053731

■ 5065547

■ 5051676

■ 5067602

■ 5049877

■ 5069401

■ 5047822

■ 5071456

■ 5046281

■ 5073510

■ 5075565

■ 5077364

Harmonies

Analogous

The Analogous color harmony consists of three colors that are next to each other on the color wheel.



4797760



5059639



4994351

Triad

The Triadic color harmony groups three colors that are evenly spaced from another and form a triangle on the color wheel.



5059639



3358253



2637132

Complementary

The Complementary color scheme is a pair of colors which are on the opposite of each other on the color wheel.



5059639



3427658

Split Complementary

Split-complementary colors differ from the complementary color scheme. The scheme consists of three colors, the original color and two neighbors of the complement color.



2113351



5059639



2703157

Square

The Square scheme is like the rectangle color scheme, but the four colors are evenly spaced on the color wheel.



5059639



4012841



2179134



3488332

Rectangle

The Rectangle color scheme consists of four colors that form a rectangle on the color wheel.



5059639



4732715



2179134



2440778

Sweetspot

The Sweet Spot groups the original color and five complimentary colors.



5059639



6511195



4863053



3353902



11776947



3355443

Same Dimension

The Same Dimension uses a secret algorithm to generate beautiful new colors.



5059639



6503745



5061940



2499107



6684684



15073308

Inverse Universe

The Inverse Universe completely reimagines the original color for something new.



5059639



6503745



3425357



2499107



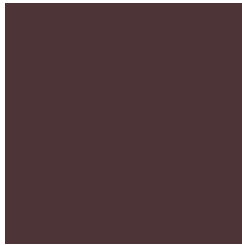
6684684



15073308

Previews

White Background



This preview shows how the Decimal color 5059639 looks on a white background.

Color Contrast Check

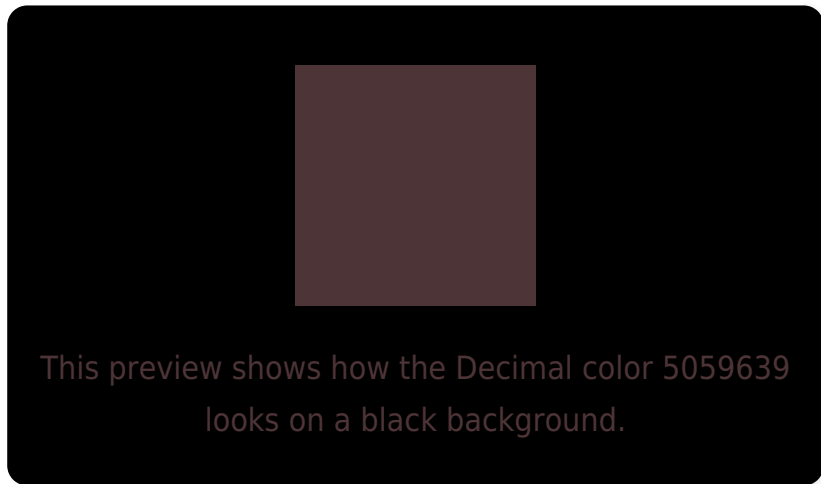
Large Text (above 18pt) WCAG AA ✓ Pass

Any Text WCAG AA ✓ Pass

Large Text (above 18pt) WCAG AAA ✓ Pass

Any Text WCAG AAA ✓ Pass

Black Background



Color Contrast Check

Large Text (above 18pt) WCAG AA × Fail

Any Text WCAG AA × Fail

Large Text (above 18pt) WCAG AAA × Fail

Any Text WCAG AAA × Fail

If you want to check with other color combinations, try the [Color Contrast Checker](#).

Decimal 5059639 Background



This preview shows how black text looks on a background with the Decimal color 5059639.

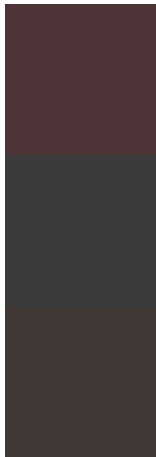


This preview shows how white text looks on a background with the Decimal color 5059639.

Color Blindness Simulation

Color vision deficiency is a very complex topic, and I could not describe the different causes any better than Wikipedia does, so if you want to learn more, you should check out their [article about color blindness](#).

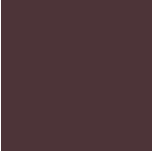
Dichromacy



Original Color
5059639

Protanopia
3947323

Deuteranopia
4340022



Tritanopia
5059640

Trichromacy



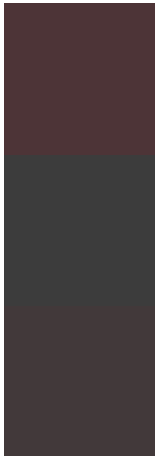
Original Color
5059639

Protanomaly
4339770

Deuteranomaly
4601654

Tritanomaly
5059640

Monochromacy



Original Color
5059639

Achromatopsia
3947580

Achromatomaly
4340026

CSS Examples

Text

The CSS property to change the color of the text to Decimal 5059639 is called "color". The color property can be set on classes, ids or directly on the HTML element.

This example shows how text in the color #4D3437 looks like.

```
.text, #text, p{  
  color:#4D3437  
}
```

If you want to add a text shadow in that color use the text-shadow property, you can generate a text shadow directly with our [CSS Text Shadow Generator](#).

Here you see how black text with a 4 pixel #4D3437 colored shadow looks like.

```
.shadow{ text-shadow: 4px 4px 2px #4D3437
}
```

Border

The CSS property to change the border of an element to Decimal 5059639 is called "border". The border property can be set on classes, ids or directly on the HTML element.

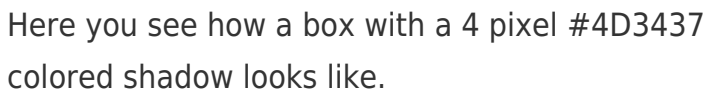
This example shows the color as border, it can be applied via the CSS property "border" or "border-color".

```
.border, #border, table{ border:4px solid
#4D3437 }
```

If only the border color should be changed use the property `border-color`.

```
.border{ border-color:#4D3437 }
```

If you want to add a box shadow in that color use:



Here you see how a box with a 4 pixel #4D3437 colored shadow looks like.

```
.boxshadow{ -moz-box-shadow:4px 4px 4px  
4px #4D3437; -webkit-box-shadow:4px 4px  
4px 4px #4D3437; box-shadow:4px 4px 4px  
4px #4D3437 }
```

Background

The CSS property to change the background color of an element to Decimal 5059639 is called "background". The background property can be set on classes, ids or directly on the HTML element.

```
.background, #background, body{  
background:#4D3437 }
```

If only the background color should be changed can be used:

```
.background{ background-color:#4D3437 }
```

This example shows the color as background, it is applied via the CSS property "background".

To optimize and compress your CSS code, you can use our [online CSS compressor and optimizer](#) based on csstidy. If you want to create a linear or radial gradient as background or border, check our [CSS Gradient Generator](#).

Hey! You found this booklet interesting? Support Converting Colors with the new Membership Option!

The pro membership hides all ads, plus gives you double the colors in the color bucket, and more awesome pro features!

[Learn more, Memberships starting at \\$2.50/m!](#)

**Follow me
on Twitter!**

@ConvertingColor