

Converting Colors

Decimal(5121561)

Have a look what the booklet for
Decimal(5121561) contains.

Decimal(5121561)	3
<i>Conversions</i>	4
<i>Details</i>	6
<i>Harmonies</i>	11
<i>Previews</i>	23
<i>Color Blindness Simulation</i>	26
<i>CSS Examples</i>	29

Color

Decimal(5121561)

Conversions

Conversions Part 1

Format	Color
Hex	4E2619
RGB	78, 38, 25
RGB Percent	31%, 15%, 10%
CMY	0.6941, 0.8510, 0.9020
CMYK	0.00, 0.51, 0.68, 0.69
HSL	15°, 51%, 20%
HSV	15°, 68%, 31%
XYZ	4.0105, 3.0761, 1.3021
YIQ	48.4780, 28.0130, 4.4370

Conversions

Conversions Part 2

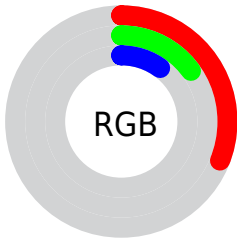
Format	Color
RYB	78, 42, 25
Decimal	5121561
CIELab	20.35, 17.40, 16.93
CIElCh	20, 24.281, 44.208
Yxy	3.0761, 0.4781, 0.3667
Android (android.graphics.Color)	4283311641 (0xFF4E2619)
YUV	48.4780, -11.5747, 25.8908
Hunter-Lab	17.5389, 10.1231, 7.8755

Details

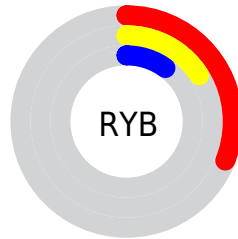
The Decimal color **5121561** is a dark color, and the websafe version is hex **663333**. A complement of this color would be **1655118**, and the grayscale version is **3223857**.

A 20% lighter version of the original color is **8541252**, and **2097153** is the 20% darker color. If you saturate the color by 10%, you get **5120017**, and if you desaturate by 10%, it is **5123105**.

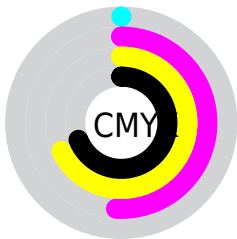
Distribution



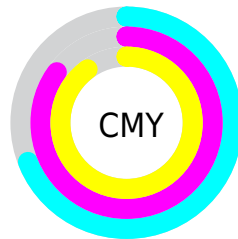
- Red (31%)
- Green (15%)
- Blue (10%)



- Red (31%)
- Yellow (16%)
- Blue (10%)



- Cyan (0%)
- Magenta (51%)
- Yellow (68%)
- Black (69%)



- Cyan (69%)
- Magenta (85%)
- Yellow (90%)

Brightness & Saturation Gradients

These gradients show how the Decimal color 5121561 changes by changing the brightness by 10 percent. The first figure shows a shift by +10% for each color and the second figure -10%.

Similar to the brightness gradients but the following saturation gradients show a change of the Decimal color 5121561 by changing the saturation by 10% instead.

■ 5121561

■ 5121561

16777213

■ 3543296

■ 8541252

■ 2097153

■ 10316892

■ 0

■ 12158581

■ 14000270

■ 15907753

■ 16766916

■ 16774112

■ 5121561

■ 5121561

■ 5120017

■ 5123105

■ 5118473

■ 5124649

■ 5116930

■ 5126192

■ 5116672

■ 5127736

■ 5129024

■ 5130568

■ 5132112

■ 5133655

■ 5135199

Harmonies

Analogous

The Analogous color harmony consists of three colors that are next to each other on the color wheel.



5382697



5121561



4402446

Triad

The Triadic color harmony groups three colors that are evenly spaced from another and form a triangle on the color wheel.



5121561



14631



2175060

Complementary

The Complementary color scheme is a pair of colors which are on the opposite of each other on the color wheel.



5121561



1655118

Split Complementary

Split-complementary colors differ from the complementary color scheme. The scheme consists of three colors, the original color and two neighbors of the complement color.



13907



5121561



14905

Square

The Square scheme is like the rectangle color scheme, but the four colors are evenly spaced on the color wheel.



5121561



2045718



14665



4008267

Rectangle

The Rectangle color scheme consists of four colors that form a rectangle on the color wheel.



5121561



3748107



14665



1192533

Sweetspot

The Sweet Spot groups the original color and five complimentary colors.



5121561



6707026



5118274



3353127



11776947



3355443

Same Dimension

The Same Dimension uses a secret algorithm to generate beautiful new colors.



5121561



6694674



5128217



2499362



6691072



15087616

Inverse Universe

The Inverse Universe completely reimagines the original color for something new.



1655118



1200486



1648462



2237734



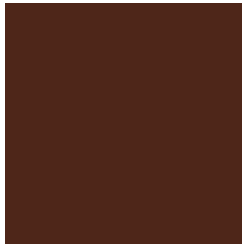
19814



44518

Previews

White Background



This preview shows how the Decimal color 5121561 looks on a white background.

Color Contrast Check

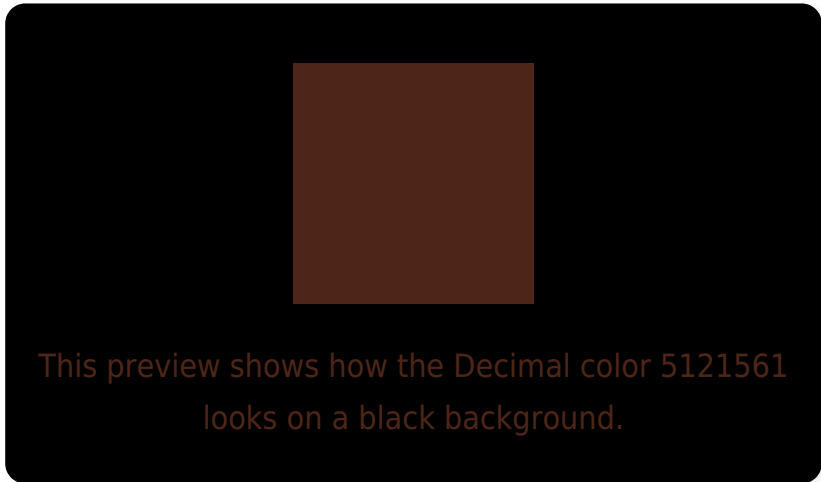
Large Text (above 18pt) WCAG AA ✓ Pass

Any Text WCAG AA ✓ Pass

Large Text (above 18pt) WCAG AAA ✓ Pass

Any Text WCAG AAA ✓ Pass

Black Background



Color Contrast Check

Large Text (above 18pt) WCAG AA × Fail

Any Text WCAG AA × Fail

Large Text (above 18pt) WCAG AAA × Fail

Any Text WCAG AAA × Fail

If you want to check with other color combinations, try the [Color Contrast Checker](#).

Decimal 5121561 Background



This preview shows how black text looks on a background with the Decimal color 5121561.

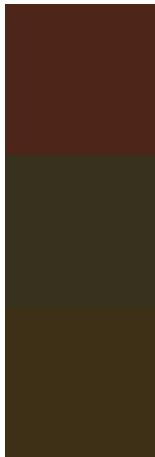


This preview shows how white text looks on a background with the Decimal color 5121561.

Color Blindness Simulation

Color vision deficiency is a very complex topic, and I could not describe the different causes any better than Wikipedia does, so if you want to learn more, you should check out their [article about color blindness](#).


Dichromacy



Original Color
5121561

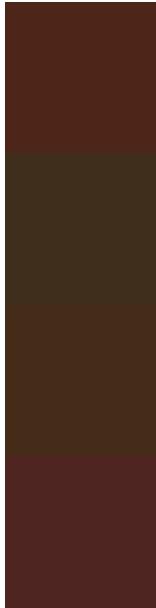
Protanopia
3617309

Deuteranopia
4075287



Tritanopia
5186599

Trichromacy



Original Color
5121561

Protanomaly
4140572

Deuteranomaly
4467736

Tritanomaly
5186850

Monochromacy



Original Color
5121561

Achromatopsia
3158064

Achromatomaly
3877928

CSS Examples

Text

The CSS property to change the color of the text to Decimal 5121561 is called "color". The color property can be set on classes, ids or directly on the HTML element.

This example shows how text in the color #4E2619 looks like.

```
.text, #text, p{  
    color:#4E2619  
}
```

If you want to add a text shadow in that color use the text-shadow property, you can generate a text shadow directly with our [CSS Text Shadow Generator](#).

Here you see how black text with a 4 pixel #4E2619 colored shadow looks like.

```
.shadow{ text-shadow: 4px 4px 2px #4E2619
}
```

Border

The CSS property to change the border of an element to Decimal 5121561 is called "border". The border property can be set on classes, ids or directly on the HTML element.

This example shows the color as border, it can be applied via the CSS property "border" or "border-color".

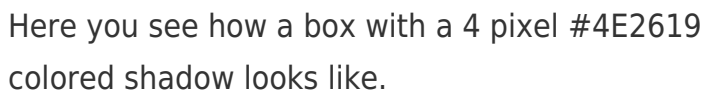
```
.border, #border, table{ border:4px solid
#4E2619 }
```

If only the border color should be changed use the property `border-color`.

```
.border{ border-color:#4E2619 }
```

If you want to add a box shadow in that color use:

Here you see how a box with a 4 pixel #4E2619 colored shadow looks like.



```
.boxshadow{ -moz-box-shadow:4px 4px 4px  
4px #4E2619; -webkit-box-shadow:4px 4px  
4px 4px #4E2619; box-shadow:4px 4px 4px  
4px #4E2619 }
```

Background

The CSS property to change the background color of an element to Decimal 5121561 is called "background". The background property can be set on classes, ids or directly on the HTML element.

```
.background, #background, body{  
background:#4E2619 }
```

If only the background color should be changed can be used:

```
.background{ background-color:#4E2619 }
```

This example shows the color as background, it is applied via the CSS property "background".

To optimize and compress your CSS code, you can use our [online CSS compressor and optimizer](#) based on csstidy. If you want to create a linear or radial gradient as background or border, check our [CSS Gradient Generator](#).

Hey! You found this booklet interesting? Support Converting Colors with the new Membership Option!

The pro membership hides all ads, plus gives you double the colors in the color bucket, and more awesome pro features!

[Learn more, Memberships starting at \\$2.50/m!](#)

**Follow me
on Twitter!**

@ConvertingColor