

Converting Colors

Decimal(5184272)

Have a look what the booklet for
Decimal(5184272) contains.

Decimal(5184272)	3
<i>Conversions</i>	4
<i>Details</i>	6
<i>Harmonies</i>	11
<i>Previews</i>	23
<i>Color Blindness Simulation</i>	26
<i>CSS Examples</i>	29

Color

Decimal(5184272)

Conversions

Conversions Part 1

Format	Color
Hex	4F1B10
RGB	79, 27, 16
RGB Percent	31%, 11%, 6%
CMY	0.6902, 0.8941, 0.9373
CMYK	0.00, 0.66, 0.80, 0.69
HSL	10°, 66%, 19%
HSV	10°, 80%, 31%
XYZ	3.7099, 2.4835, 0.7740
YIQ	41.2940, 34.5230, 7.6030

Conversions

Conversions Part 2

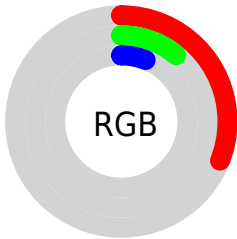
Format	Color
R_YB	79, 29, 16
Decimal	5184272
CIE Lab	17.84, 23.73, 19.69
CIE LCh	18, 30.836, 39.692
Yxy	2.4835, 0.5325, 0.3564
Android (android.graphics.Color)	4283374352 (0xFF4F1B10)
YUV	41.2940, -12.4699, 33.0682
Hunter-Lab	15.7593, 14.4422, 8.1193

Details

The Decimal color **5184272** is a dark color, and the websafe version is hex **663333**. A complement of this color would be **1066063**, and the grayscale version is **2697513**.

A 20% lighter version of the original color is **8669498**, and **1835009** is the 20% darker color. If you saturate the color by 10%, you get **5182472**, and if you desaturate by 10%, it is **5186072**.

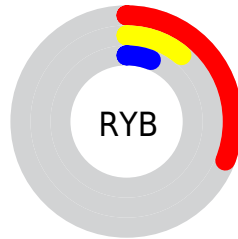
Distribution



Red (31%)

Green (11%)

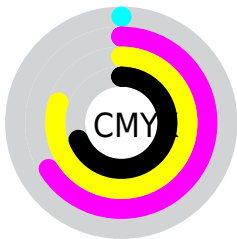
Blue (6%)



Red (31%)

Yellow (11%)

Blue (6%)

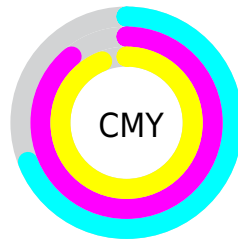


Cyan (0%)

Magenta (66%)

Yellow (80%)

Black (69%)



Cyan (69%)

Magenta (89%)

Yellow (94%)

Brightness & Saturation Gradients

These gradients show how the Decimal color 5184272 changes by changing the brightness by 10 percent. The first figure shows a shift by +10% for each color and the second figure -10%.

Similar to the brightness gradients but the following saturation gradients show a change of the Decimal color 5184272 by changing the saturation by 10% instead.

 5184272

 5184272

 16777200

 3540224

 8669498

 1835009

 10510674

 0

 12352106

 14259587

 16232349

 16763832

 16771028

 5184272

 5184272

■ 5182472

■ 5186072

■ 5180928

■ 5187616

■ 5189416

■ 5190960

■ 5192760

■ 5194303

■ 5196103

■ 5197647

■ 5199447

Harmonies

Analogous

The Analogous color harmony consists of three colors that are next to each other on the color wheel.



5444645



5184272



4400384

Triad

The Triadic color harmony groups three colors that are evenly spaced from another and form a triangle on the color wheel.



5184272



13595



11352

Complementary

The Complementary color scheme is a pair of colors which are on the opposite of each other on the color wheel.



5184272



1066063

Split Complementary

Split-complementary colors differ from the complementary color scheme. The scheme consists of three colors, the original color and two neighbors of the complement color.



12885



5184272



13874

Square

The Square scheme is like the rectangle color scheme, but the four colors are evenly spaced on the color wheel.



5184272



1585667



13640



3482190

Rectangle

The Rectangle color scheme consists of four colors that form a rectangle on the color wheel.



5184272



3615232



13640



11864

Sweetspot

The Sweet Spot groups the original color and five complimentary colors.



5184272



6705742



5181508



3352356



11776947



3355443

Same Dimension

The Same Dimension uses a secret algorithm to generate beautiful new colors.



5184272



6690052



5192208



2499362



6689280



15083520

Inverse Universe

The Inverse Universe completely reimagines the original color for something new.



1066063



284006



1058127



2237990



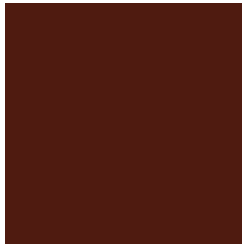
21606



48614

Previews

White Background



This preview shows how the Decimal color 5184272 looks on a white background.

Color Contrast Check

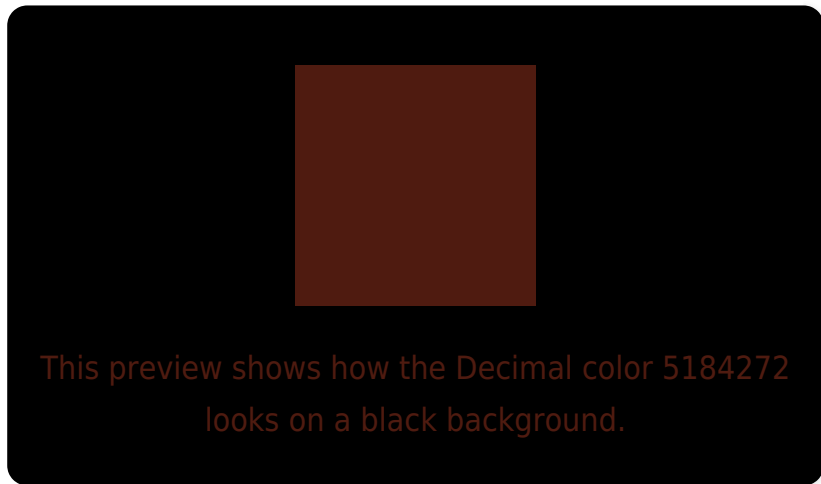
Large Text (above 18pt) WCAG AA ✓ Pass

Any Text WCAG AA ✓ Pass

Large Text (above 18pt) WCAG AAA ✓ Pass

Any Text WCAG AAA ✓ Pass

Black Background



Color Contrast Check

Large Text (above 18pt) WCAG AA × Fail

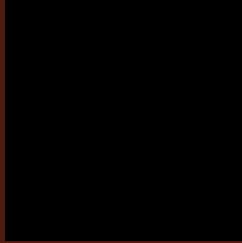
Any Text WCAG AA × Fail

Large Text (above 18pt) WCAG AAA × Fail

Any Text WCAG AAA × Fail

If you want to check with other color combinations, try the [Color Contrast Checker](#).

Decimal 5184272 Background



This preview shows how black text looks on a background with the Decimal color 5184272.

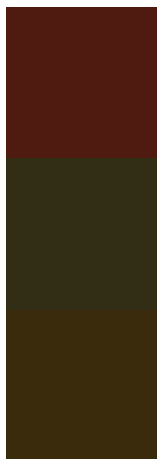


This preview shows how white text looks on a background with the Decimal color 5184272.

Color Blindness Simulation

Color vision deficiency is a very complex topic, and I could not describe the different causes any better than Wikipedia does, so if you want to learn more, you should check out their [article about color blindness](#).

Dichromacy



Original Color

5184272

Protanopia

3288341

Deuteranopia

3746571



Tritanopia
5184027

Trichromacy



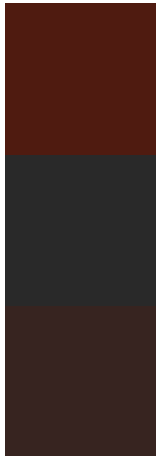
Original Color
5184272

Protanomaly
4007443

Deuteranomaly
4269325

Tritanomaly
5184023

Monochromacy



Original Color
5184272

Achromatopsia
2697513

Achromatomaly
3613728

CSS Examples

Text

The CSS property to change the color of the text to Decimal 5184272 is called "color". The color property can be set on classes, ids or directly on the HTML element.

This example shows how text in the color #4F1B10 looks like.

```
.text, #text, p{  
    color:#4F1B10  
}
```

If you want to add a text shadow in that color use the text-shadow property, you can generate a text shadow directly with our [CSS Text Shadow Generator](#).

Here you see how black text with a 4 pixel #4F1B10 colored shadow looks like.

```
.shadow{ text-shadow: 4px 4px 2px #4F1B10
}
```

Border

The CSS property to change the border of an element to Decimal 5184272 is called "border". The border property can be set on classes, ids or directly on the HTML element.

This example shows the color as border, it can be applied via the CSS property "border" or "border-color".

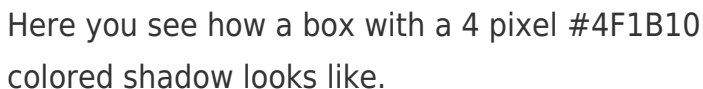
```
.border, #border, table{ border:4px solid
#4F1B10 }
```

If only the border color should be changed use the property `border-color`.

```
.border{ border-color:#4F1B10 }
```

If you want to add a box shadow in that color use:

Here you see how a box with a 4 pixel #4F1B10 colored shadow looks like.

A rectangular box with a dark red border and a dark red shadow. The shadow is cast to the right and bottom of the box, creating a 3D effect. The text inside the box is black and reads: "Here you see how a box with a 4 pixel #4F1B10 colored shadow looks like."

```
.boxshadow{ -moz-box-shadow:4px 4px 4px  
4px #4F1B10; -webkit-box-shadow:4px 4px  
4px 4px #4F1B10; box-shadow:4px 4px 4px  
4px #4F1B10 }
```

Background

The CSS property to change the background color of an element to Decimal 5184272 is called "background". The background property can be set on classes, ids or directly on the HTML element.

```
.background, #background, body{  
background:#4F1B10 }
```

If only the background color should be changed can be used:

```
.background{ background-color:#4F1B10 }
```

This example shows the color as background, it is applied via the CSS property "background".

To optimize and compress your CSS code, you can use our [online CSS compressor and optimizer](#) based on csstidy. If you want to create a linear or radial gradient as background or border, check our [CSS Gradient Generator](#).

Hey! You found this booklet interesting? Support Converting Colors with the new Membership Option!

The pro membership hides all ads, plus gives you double the colors in the color bucket, and more awesome pro features!

[Learn more, Memberships starting at \\$2.50/m!](#)

**Follow me
on Twitter!**

@ConvertingColor