

Converting Colors

Decimal(5186579)

Have a look what the booklet for
Decimal(5186579) contains.

Decimal(5186579)	3
<i>Conversions</i>	4
<i>Details</i>	6
<i>Harmonies</i>	11
<i>Previews</i>	23
<i>Color Blindness Simulation</i>	26
<i>CSS Examples</i>	29

Color

Decimal(5186579)

Conversions

Conversions Part 1

Format	Color
Hex	4F2413
RGB	79, 36, 19
RGB Percent	31%, 14%, 7%
CMY	0.6902, 0.8588, 0.9255
CMYK	0.00, 0.54, 0.76, 0.69
HSL	17°, 61%, 19%
HSV	17°, 76%, 31%
XYZ	3.9729, 2.9710, 0.9802
YIQ	46.9190, 31.0850, 3.8290

Conversions

Conversions Part 2

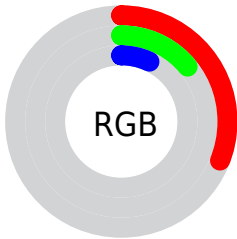
Format	Color
R_YB	79, 43, 19
Decimal	5186579
CIE Lab	19.93, 18.66, 20.34
CIE LCh	20, 27.605, 47.460
Yxy	2.9710, 0.5014, 0.3749
Android (android.graphics.Color)	4283376659 (0xFF4F2413)
YUV	46.9190, -13.7641, 28.1350
Hunter-Lab	17.2367, 10.9781, 8.6941

Details

The Decimal color **5186579** is a dark color, and the websafe version is hex **663333**. A complement of this color would be **1261135**, and the grayscale version is **3092271**.

A 20% lighter version of the original color is **8671806**, and **2097153** is the 20% darker color. If you saturate the color by 10%, you get **5185035**, and if you desaturate by 10%, it is **5188123**.

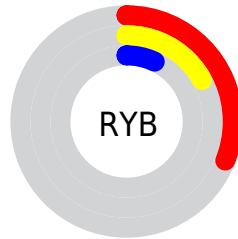
Distribution



Red (31%)

Green (14%)

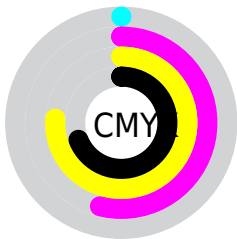
Blue (7%)



Red (31%)

Yellow (17%)

Blue (7%)

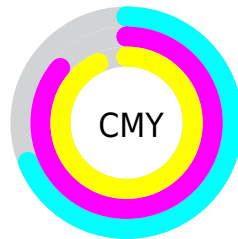


Cyan (0%)

Magenta (54%)

Yellow (76%)

Black (69%)



Cyan (69%)

Magenta (86%)

Yellow (93%)

Brightness & Saturation Gradients

These gradients show how the Decimal color 5186579 changes by changing the brightness by 10 percent. The first figure shows a shift by +10% for each color and the second figure -10%.

Similar to the brightness gradients but the following saturation gradients show a change of the Decimal color 5186579 by changing the saturation by 10% instead.

 5186579

 5186579

 16777205

 3542784

 8671806

 2097153

 10447445

 0

 12288878

 14196359

 16103841

 16766140

 16773592

 5186579

 5186579

■ 5185035

■ 5188123

■ 5183747

■ 5189411

■ 5182976

■ 5190955

■ 5192499

■ 5193787

■ 5195330

■ 5196874

■ 5198162

■ 5199706

Harmonies

Analogous

The Analogous color harmony consists of three colors that are next to each other on the color wheel.



5578277



5186579



4336644

Triad

The Triadic color harmony groups three colors that are evenly spaced from another and form a triangle on the color wheel.



5186579



14631



2109015

Complementary

The Complementary color scheme is a pair of colors which are on the opposite of each other on the color wheel.



5186579



1261135

Split Complementary

Split-complementary colors differ from the complementary color scheme. The scheme consists of three colors, the original color and two neighbors of the complement color.



13655



5186579



14908

Square

The Square scheme is like the rectangle color scheme, but the four colors are evenly spaced on the color wheel.



5186579



1521427



14669



4204108

Rectangle

The Rectangle color scheme consists of four colors that form a rectangle on the color wheel.



5186579



3551490



14669



864600

Sweetspot

The Sweet Spot groups the original color and five complimentary colors.



5186579



6706511



5182270



3352869



11776947



3355443

Same Dimension

The Same Dimension uses a secret algorithm to generate beautiful new colors.



5186579



6693641



5194259



2499618



6692096



15089920

Inverse Universe

The Inverse Universe completely reimagines the original color for something new.



1261135



609382



1253455



2237734



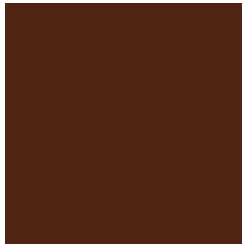
18790



42214

Previews

White Background



This preview shows how the Decimal color 5186579 looks on a white background.

Color Contrast Check

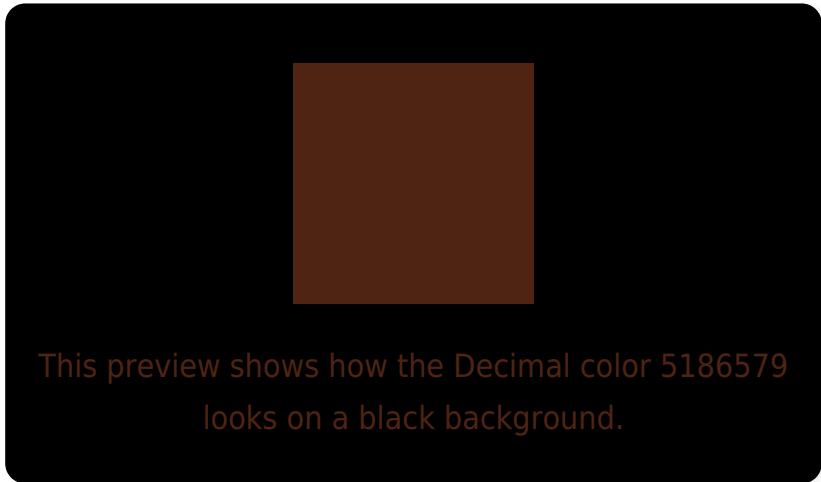
Large Text (above 18pt) WCAG AA ✓ Pass

Any Text WCAG AA ✓ Pass

Large Text (above 18pt) WCAG AAA ✓ Pass

Any Text WCAG AAA ✓ Pass

Black Background



Color Contrast Check

Large Text (above 18pt) WCAG AA × Fail

Any Text WCAG AA × Fail

Large Text (above 18pt) WCAG AAA × Fail

Any Text WCAG AAA × Fail

If you want to check with other color combinations, try the [Color Contrast Checker](#).

Decimal 5186579 Background



This preview shows how black text looks on a background with the Decimal color 5186579.

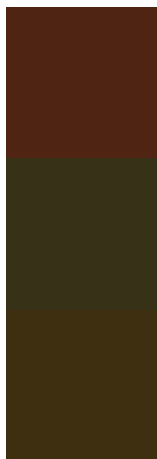


This preview shows how white text looks on a background with the Decimal color 5186579.

Color Blindness Simulation

Color vision deficiency is a very complex topic, and I could not describe the different causes any better than Wikipedia does, so if you want to learn more, you should check out their [article about color blindness](#).


Dichromacy



Original Color
5186579

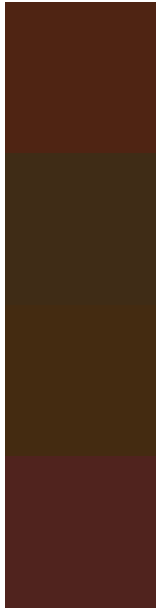
Protanopia
3551511

Deuteranopia
4009744



Tritanopia
5251620

Trichromacy



Original Color
5186579

Protanomaly
4140054

Deuteranomaly
4467473

Tritanomaly
5251870

Monochromacy



Original Color
5186579

Achromatopsia
3092271

Achromatomaly
3877669

CSS Examples

Text

The CSS property to change the color of the text to Decimal 5186579 is called "color". The color property can be set on classes, ids or directly on the HTML element.

This example shows how text in the color #4F2413 looks like.

```
.text, #text, p{  
    color:#4F2413  
}
```

If you want to add a text shadow in that color use the text-shadow property, you can generate a text shadow directly with our [CSS Text Shadow Generator](#).

Here you see how black text with a 4 pixel #4F2413 colored shadow looks like.

```
.shadow{ text-shadow: 4px 4px 2px #4F2413
}
```

Border

The CSS property to change the border of an element to Decimal 5186579 is called "border". The border property can be set on classes, ids or directly on the HTML element.

This example shows the color as border, it can be applied via the CSS property "border" or "border-color".

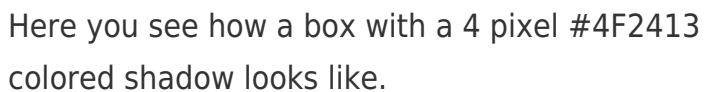
```
.border, #border, table{ border:4px solid
#4F2413 }
```

If only the border color should be changed use the property `border-color`.

```
.border{ border-color:#4F2413 }
```

If you want to add a box shadow in that color use:

Here you see how a box with a 4 pixel #4F2413 colored shadow looks like.



```
.boxshadow{ -moz-box-shadow:4px 4px 4px  
4px #4F2413; -webkit-box-shadow:4px 4px  
4px 4px #4F2413; box-shadow:4px 4px 4px  
4px #4F2413 }
```

Background

The CSS property to change the background color of an element to Decimal 5186579 is called "background". The background property can be set on classes, ids or directly on the HTML element.

```
.background, #background, body{  
background:#4F2413 }
```

If only the background color should be changed can be used:

```
.background{ background-color:#4F2413 }
```

This example shows the color as background, it is applied via the CSS property "background".

To optimize and compress your CSS code, you can use our [online CSS compressor and optimizer](#) based on csstidy. If you want to create a linear or radial gradient as background or border, check our [CSS Gradient Generator](#).

Hey! You found this booklet interesting? Support Converting Colors with the new Membership Option!

The pro membership hides all ads, plus gives you double the colors in the color bucket, and more awesome pro features!

[Learn more, Memberships starting at \\$2.50/m!](#)

**Follow me
on Twitter!**

@ConvertingColor