

Converting Colors

Decimal(5187118)

Have a look what the booklet for
Decimal(5187118) contains.

Decimal(5187118)	3
<i>Conversions</i>	4
<i>Details</i>	6
<i>Harmonies</i>	11
<i>Previews</i>	23
<i>Color Blindness Simulation</i>	26
<i>CSS Examples</i>	29

Color

Decimal(5187118)

Conversions

Conversions Part 1

Format	Color
Hex	4F262E
RGB	79, 38, 46
RGB Percent	31%, 15%, 18%
CMY	0.6902, 0.8510, 0.8196
CMYK	0.00, 0.52, 0.42, 0.69
HSL	348°, 35%, 23%
HSV	348°, 52%, 31%
XYZ	4.4107, 3.2457, 2.9788
YIQ	51.1710, 21.8680, 11.1800

Conversions

Conversions Part 2

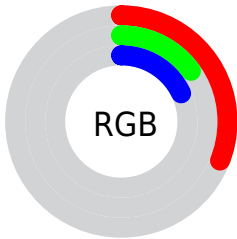
Format	Color
RYB	79, 38, 46
Decimal	5187118
CIELab	21.00, 20.18, 3.53
CIElCh	21, 20.491, 9.929
Yxy	3.2457, 0.4147, 0.3052
Android (android.graphics.Color)	4283377198 (0xFF4F262E)
YUV	51.1710, -2.5493, 24.4060
Hunter-Lab	18.0160, 12.1728, 2.8081

Details

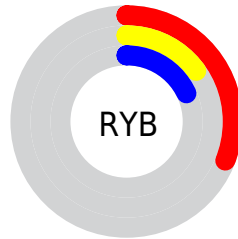
The Decimal color **5187118** is a dark color, and the websafe version is hex **663333**. A complement of this color would be **2510663**, and the grayscale version is **3355443**.

A 20% lighter version of the original color is **8541276**, and **2359296** is the 20% darker color. If you saturate the color by 10%, you get **5185064**, and if you desaturate by 10%, it is **5189172**.

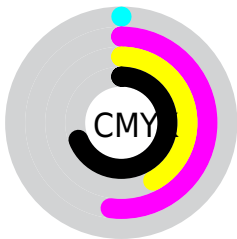
Distribution



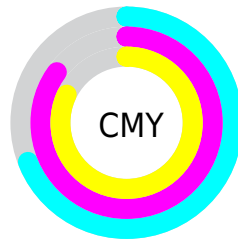
- Red (31%)
- Green (15%)
- Blue (18%)



- Red (31%)
- Yellow (15%)
- Blue (18%)



- Cyan (0%)
- Magenta (52%)
- Yellow (42%)
- Black (69%)



- Cyan (69%)
- Magenta (85%)
- Yellow (82%)

Brightness & Saturation Gradients

These gradients show how the Decimal color 5187118 changes by changing the brightness by 10 percent. The first figure shows a shift by +10% for each color and the second figure -10%.

Similar to the brightness gradients but the following saturation gradients show a change of the Decimal color 5187118 by changing the saturation by 10% instead.

■ 5187118

■ 5187118

16777215

■ 3608601

■ 8541276

■ 2359296

■ 10317172

■ 0

■ 12093070

■ 13935016

■ 15842499

■ 16767199

■ 16774396

■ 5187118

■ 5187118

■ 5185064

■ 5189172

■ 5183009

■ 5191227

■ 5180955

■ 5193281

■ 5178901

■ 5195335

■ 5177359

■ 5197390

■ 5199188

■ 5201243

■ 5203297

■ 5205351

Harmonies

Analogous

The Analogous color harmony consists of three colors that are next to each other on the color wheel.



4794429



5187118



5056800

Triad

The Triadic color harmony groups three colors that are evenly spaced from another and form a triangle on the color wheel.



5187118



2504475



14159

Complementary

The Complementary color scheme is a pair of colors which are on the opposite of each other on the color wheel.



5187118



2510663

Split Complementary

Split-complementary colors differ from the complementary color scheme. The scheme consists of three colors, the original color and two neighbors of the complement color.



14661



5187118



1128744

Square

The Square scheme is like the rectangle color scheme, but the four colors are evenly spaced on the color wheel.



5187118



3617556



14903



2306640

Rectangle

The Rectangle color scheme consists of four colors that form a rectangle on the color wheel.



5187118



4729881



14903



14412

Sweetspot

The Sweet Spot groups the original color and five complimentary colors.



5187118



6706777



4662863



3352875



11776947



3355443

Same Dimension

The Same Dimension uses a secret algorithm to generate beautiful new colors.



5187118



6694707



5190182



2499107



6684692



15073325

Inverse Universe

The Inverse Universe completely reimagines the original color for something new.



5187118



6694707



2507599



2499107



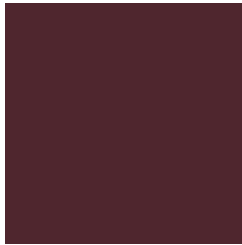
6684692



15073325

Previews

White Background



This preview shows how the Decimal color 5187118 looks on a white background.

Color Contrast Check

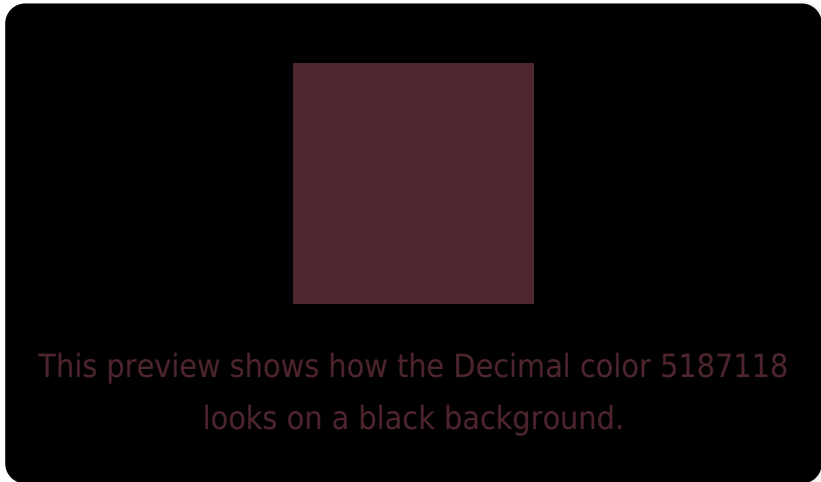
Large Text (above 18pt) WCAG AA ✓ Pass

Any Text WCAG AA ✓ Pass

Large Text (above 18pt) WCAG AAA ✓ Pass

Any Text WCAG AAA ✓ Pass

Black Background



Color Contrast Check

Large Text (above 18pt) WCAG AA × Fail

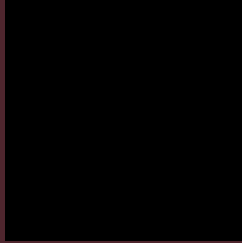
Any Text WCAG AA × Fail

Large Text (above 18pt) WCAG AAA × Fail

Any Text WCAG AAA × Fail

If you want to check with other color combinations, try the [Color Contrast Checker](#).

Decimal 5187118 Background



This preview shows how black text looks on a background with the Decimal color 5187118.



This preview shows how white text looks on a background with the Decimal color 5187118.

Color Blindness Simulation

Color vision deficiency is a very complex topic, and I could not describe the different causes any better than Wikipedia does, so if you want to learn more, you should check out their [article about color blindness](#).

Dichromacy



Original Color
5187118

Protanopia
3420981

Deuteranopia
3879212



Tritanopia
5187370

Trichromacy



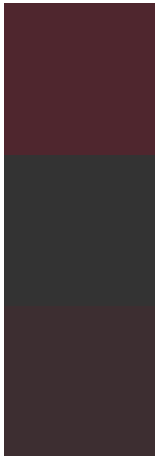
Original Color
5187118

Protanomaly
4075058

Deuteranomaly
4336941

Tritanomaly
5187371

Monochromacy



Original Color
5187118

Achromatopsia
3355443

Achromatomaly
4009521

CSS Examples

Text

The CSS property to change the color of the text to Decimal 5187118 is called "color". The color property can be set on classes, ids or directly on the HTML element.

This example shows how text in the color #4F262E looks like.

```
.text, #text, p{  
    color:#4F262E  
}
```

If you want to add a text shadow in that color use the text-shadow property, you can generate a text shadow directly with our [CSS Text Shadow Generator](#).

Here you see how black text with a 4 pixel #4F262E colored shadow looks like.

```
.shadow{ text-shadow: 4px 4px 2px #4F262E
}
```

Border

The CSS property to change the border of an element to Decimal 5187118 is called "border". The border property can be set on classes, ids or directly on the HTML element.

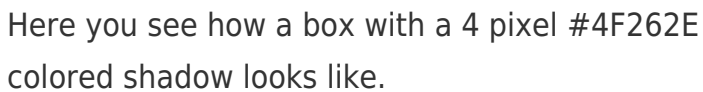
This example shows the color as border, it can be applied via the CSS property "border" or "border-color".

```
.border, #border, table{ border:4px solid
#4F262E }
```

If only the border color should be changed use the property `border-color`.

```
.border{ border-color:#4F262E }
```

If you want to add a box shadow in that color use:



Here you see how a box with a 4 pixel #4F262E colored shadow looks like.

```
.boxshadow{ -moz-box-shadow:4px 4px 4px  
4px #4F262E; -webkit-box-shadow:4px 4px  
4px 4px #4F262E; box-shadow:4px 4px 4px  
4px #4F262E }
```

Background

The CSS property to change the background color of an element to Decimal 5187118 is called "background". The background property can be set on classes, ids or directly on the HTML element.

```
.background, #background, body{  
background:#4F262E }
```

If only the background color should be changed can be used:

```
.background{ background-color:#4F262E }
```

This example shows the color as background, it is applied via the CSS property "background".

To optimize and compress your CSS code, you can use our [online CSS compressor and optimizer](#) based on csstidy. If you want to create a linear or radial gradient as background or border, check our [CSS Gradient Generator](#).

Hey! You found this booklet
interesting? Support Converting
Colors with the new Membership
Option!

The pro membership hides all ads, plus gives you
double the colors in the color bucket, and more
awesome pro features!

[Learn more, Memberships starting at \\$2.50/m!](#)

**Follow me
on Twitter!**

@ConvertingColor