

Converting Colors

Decimal(5187886)

Have a look what the booklet for
Decimal(5187886) contains.

Decimal(5187886)	3
<i>Conversions</i>	4
<i>Details</i>	6
<i>Harmonies</i>	11
<i>Previews</i>	23
<i>Color Blindness Simulation</i>	26
<i>CSS Examples</i>	29

Color

Decimal(5187886)

Conversions

Conversions Part 1

Format	Color
Hex	4F292E
RGB	79, 41, 46
RGB Percent	31%, 16%, 18%
CMY	0.6902, 0.8392, 0.8196
CMYK	0.00, 0.48, 0.42, 0.69
HSL	352°, 32%, 24%
HSV	352°, 48%, 31%
XYZ	4.5105, 3.4454, 3.0121
YIQ	52.9320, 21.0430, 9.6110

Conversions

Conversions Part 2

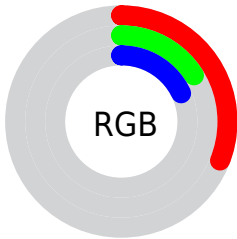
Format	Color
RYB	79, 41, 46
Decimal	5187886
CIELab	21.75, 18.32, 4.59
CIElCh	22, 18.891, 14.068
Yxy	3.4454, 0.4112, 0.3141
Android (android.graphics.Color)	4283377966 (0xFF4F292E)
YUV	52.9320, -3.4175, 22.8616
Hunter-Lab	18.5618, 10.8925, 3.3721

Details

The Decimal color **5187886** is a dark color, and the websafe version is hex **663333**. A complement of this color would be **2707274**, and the grayscale version is **3487029**.

A 20% lighter version of the original color is **8542044**, and **2359296** is the 20% darker color. If you saturate the color by 10%, you get **5185831**, and if you desaturate by 10%, it is **5189941**.

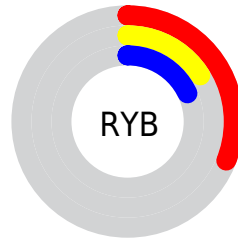
Distribution



Red (31%)

Green (16%)

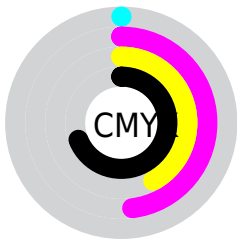
Blue (18%)



Red (31%)

Yellow (16%)

Blue (18%)

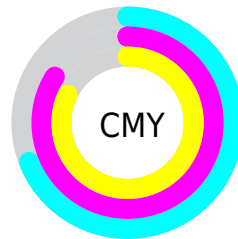


Cyan (0%)

Magenta (48%)

Yellow (42%)

Black (69%)



Cyan (69%)

Magenta (84%)

Yellow (82%)

Brightness & Saturation Gradients

These gradients show how the Decimal color 5187886 changes by changing the brightness by 10 percent. The first figure shows a shift by +10% for each color and the second figure -10%.

Similar to the brightness gradients but the following saturation gradients show a change of the Decimal color 5187886 by changing the saturation by 10% instead.

■ 5187886

■ 5187886

16777215

■ 3609625

■ 8542044

■ 2359296

■ 10252404

■ 0

■ 12093838

■ 13935784

■ 15777731

■ 16767967

■ 16775420

■ 5187886

■ 5187886

■ 5185831

■ 5189941

■ 5183776

■ 5191996

■ 5181721

■ 5194051

■ 5179667

■ 5196105

■ 5177868

■ 5198160

■ 5177354

■ 5199959

■ 5202014

■ 5204069

■ 5206124

Harmonies

Analogous

The Analogous color harmony consists of three colors that are next to each other on the color wheel.



4860476



5187886



4992033

Triad

The Triadic color harmony groups three colors that are evenly spaced from another and form a triangle on the color wheel.



5187886



2570527



866383

Complementary

The Complementary color scheme is a pair of colors which are on the opposite of each other on the color wheel.



5187886



2707274

Split Complementary

Split-complementary colors differ from the complementary color scheme. The scheme consists of three colors, the original color and two neighbors of the complement color.



14919



5187886



1325868

Square

The Square scheme is like the rectangle color scheme, but the four colors are evenly spaced on the color wheel.



5187886



3552536



15162



2765647

Rectangle

The Rectangle color scheme consists of four colors that form a rectangle on the color wheel.



5187886



4665115



15162



80205

Sweetspot

The Sweet Spot groups the original color and five complimentary colors.



5187886



6707290



4860239



3353131



11776947



3355443

Same Dimension

The Same Dimension uses a secret algorithm to generate beautiful new colors.



5187886



6695731



5191465



2499107



6684685



15073310

Inverse Universe

The Inverse Universe completely reimagines the original color for something new.



5187886



6695731



2703695



2499107



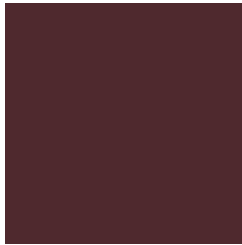
6684685



15073310

Previews

White Background



This preview shows how the Decimal color 5187886 looks on a white background.

Color Contrast Check

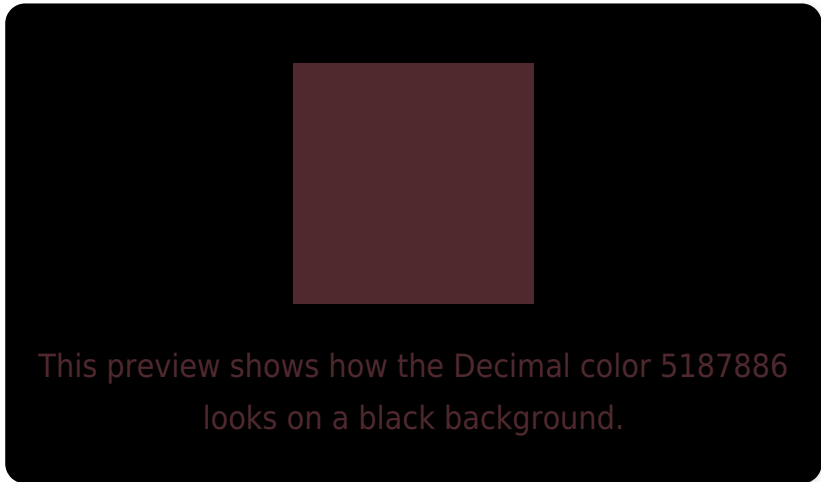
Large Text (above 18pt) WCAG AA ✓ Pass

Any Text WCAG AA ✓ Pass

Large Text (above 18pt) WCAG AAA ✓ Pass

Any Text WCAG AAA ✓ Pass

Black Background



Color Contrast Check

Large Text (above 18pt) WCAG AA × Fail

Any Text WCAG AA × Fail

Large Text (above 18pt) WCAG AAA × Fail

Any Text WCAG AAA × Fail

If you want to check with other color combinations, try the [Color Contrast Checker](#).

Decimal 5187886 Background



This preview shows how black text looks on a background with the Decimal color 5187886.



This preview shows how white text looks on a background with the Decimal color 5187886.

Color Blindness Simulation

Color vision deficiency is a very complex topic, and I could not describe the different causes any better than Wikipedia does, so if you want to learn more, you should check out their [article about color blindness](#).

Dichromacy



Original Color
5187886

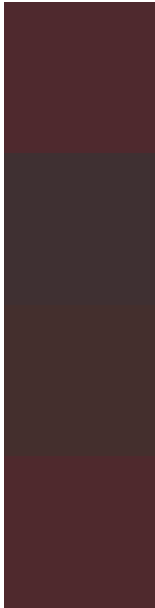
Protanopia
3552308

Deuteranopia
4010796



Tritanopia
5187884

Trichromacy



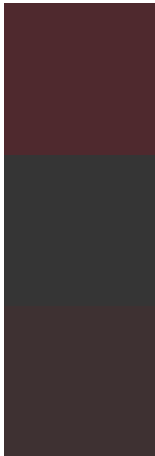
Original Color
5187886

Protanomaly
4141106

Deuteranomaly
4468525

Tritanomaly
5187885

Monochromacy



Original Color
5187886

Achromatopsia
3487029

Achromatomaly
4075826

CSS Examples

Text

The CSS property to change the color of the text to Decimal 5187886 is called "color". The color property can be set on classes, ids or directly on the HTML element.

This example shows how text in the color #4F292E looks like.

```
.text, #text, p{  
    color:#4F292E  
}
```

If you want to add a text shadow in that color use the text-shadow property, you can generate a text shadow directly with our [CSS Text Shadow Generator](#).

Here you see how black text with a 4 pixel #4F292E colored shadow looks like.

```
.shadow{ text-shadow: 4px 4px 2px #4F292E
}
```

Border

The CSS property to change the border of an element to Decimal 5187886 is called "border". The border property can be set on classes, ids or directly on the HTML element.

This example shows the color as border, it can be applied via the CSS property "border" or "border-color".

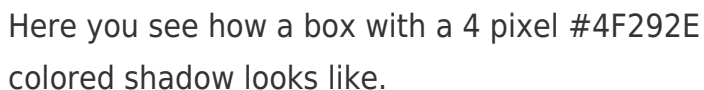
```
.border, #border, table{ border:4px solid
#4F292E }
```

If only the border color should be changed use the property `border-color`.

```
.border{ border-color:#4F292E }
```

If you want to add a box shadow in that color use:

Here you see how a box with a 4 pixel #4F292E colored shadow looks like.

A rectangular box with a dark red border and a dark red shadow. The box is white with a thin dark red border. Below the box, there is a thick dark red horizontal bar. The shadow is a dark red rectangular shape that is slightly offset from the bottom and right edges of the box.

```
.boxshadow{ -moz-box-shadow:4px 4px 4px  
4px #4F292E; -webkit-box-shadow:4px 4px  
4px 4px #4F292E; box-shadow:4px 4px 4px  
4px #4F292E }
```

Background

The CSS property to change the background color of an element to Decimal 5187886 is called "background". The background property can be set on classes, ids or directly on the HTML element.

```
.background, #background, body{  
background:#4F292E }
```

If only the background color should be changed can be used:

```
.background{ background-color:#4F292E }
```

This example shows the color as background, it is applied via the CSS property "background".

To optimize and compress your CSS code, you can use our [online CSS compressor and optimizer](#) based on csstidy. If you want to create a linear or radial gradient as background or border, check our [CSS Gradient Generator](#).

Hey! You found this booklet interesting? Support Converting Colors with the new Membership Option!

The pro membership hides all ads, plus gives you double the colors in the color bucket, and more awesome pro features!

[Learn more, Memberships starting at \\$2.50/m!](#)

**Follow me
on Twitter!**

@ConvertingColor